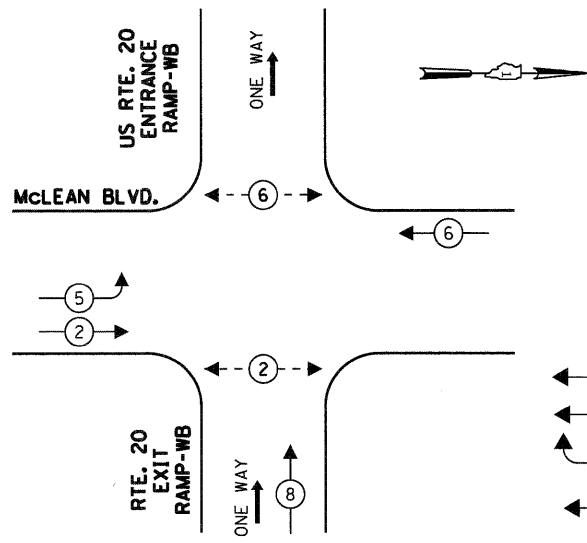


CONTROLLER SEQUENCE



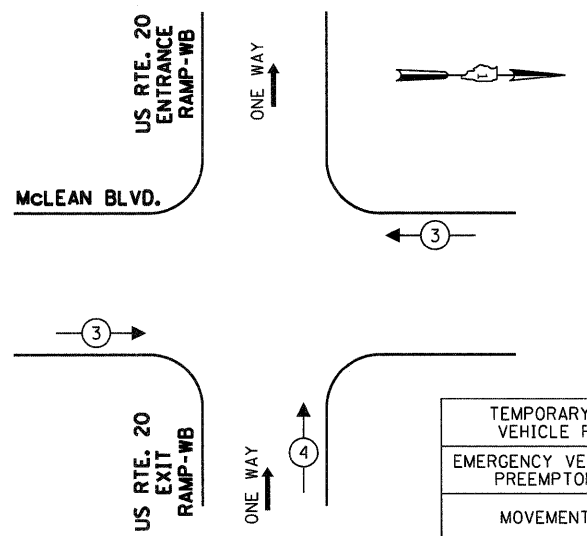
LEGEND

- ← (2) → DUAL ENTRY PHASE
- ← (1) → SINGLE ENTRY PHASE
- ◊ O.L. OVERLAP
- ← (P) → PEDESTRIAN PHASE
- * NUMBER REFERS TO ASSOCIATED PHASE

TEMPORARY PHASE DESIGNATION DIAGRAM

STAGES: PRE-STAGE, IA, AND IC

TEMPORARY EMERGENCY VEHICLE PREEMPTION SEQUENCE

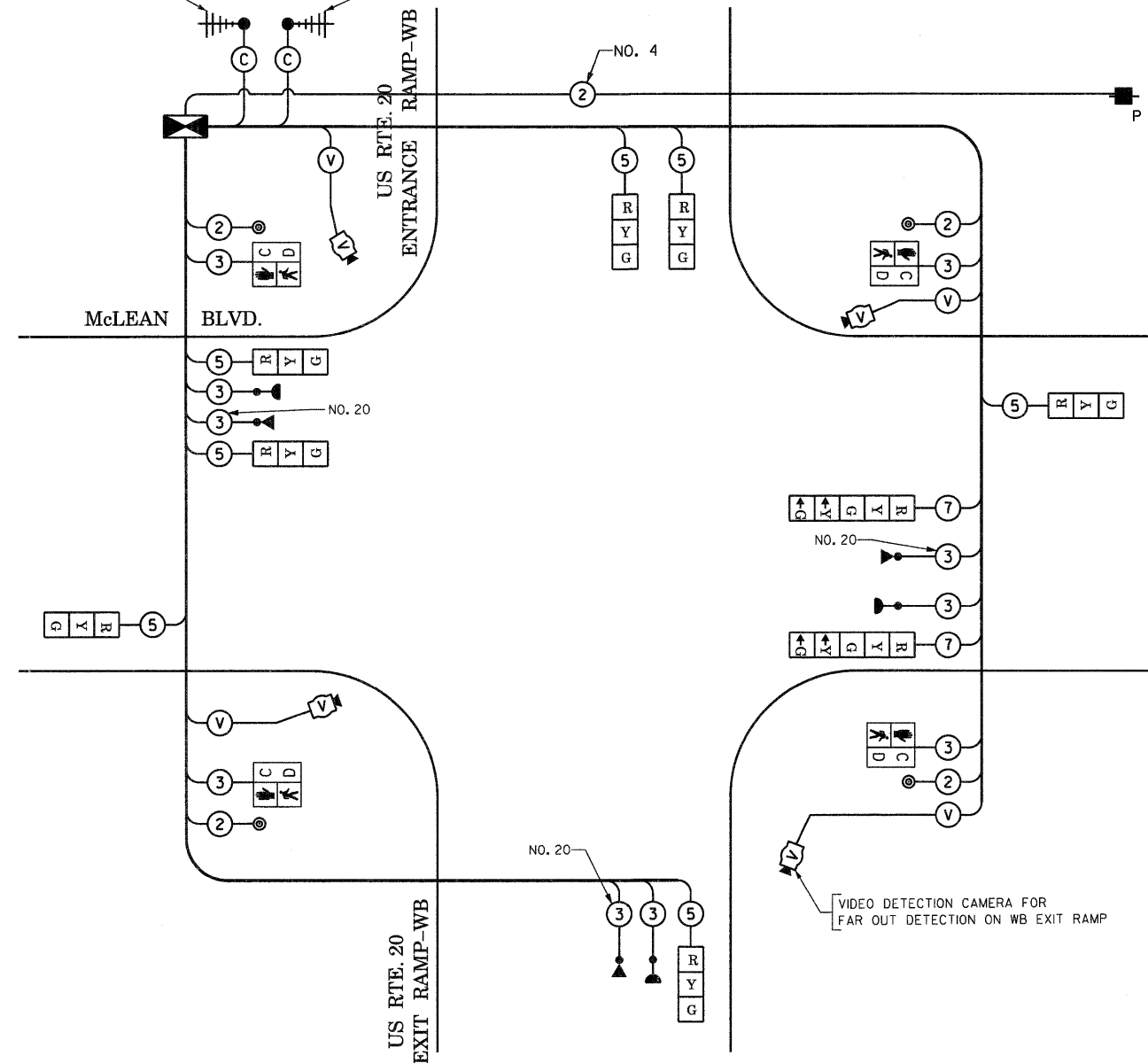


TEMPORARY EMERGENCY VEHICLE PREEMPTORS		
EMERGENCY VEHICLE PREEMPTOR	3	4
MOVEMENT	↔	↑

STAGES: PRE-STAGE, IA, AND IC

TEMPORARY RADIO INTERCONNECT TO SOUTH RAMPS OF US RTE. 20 (SEE TEMPORARY INTERCONNECT PLANS)

TEMPORARY RADIO INTERCONNECT TO LILLIAN ST. (SEE TEMPORARY INTERCONNECT PLANS)



TEMPORARY CABLE PLAN

(NOT TO SCALE)

STAGES: PRE-STAGE, IA, AND IC

I.D.O.T. TRAFFIC SIGNAL INSTALLATION ELECTRICAL SERVICE REQUIREMENTS						TOTAL WATTAGE
TYPE	NO LAMPS	WATTAGE		% OPERATION		
SIGNAL (RED)	9	135	17	0.50	76.5	
(YELLOW)	9	135	25	0.25	56.25	
(GREEN)	9	135	15	0.25	33.75	
ARROW	4	135	12	0.10	4.8	
PED. SIGNAL	4	90	25	1.00	100	
CONTROLLER	1	100	100	1.00	100	
ILLUM. SIGN				0.05		
VIDEO SYSTEM	1	150		1.00	150	
FLASHER				0.50		
ENERGY COSTS TO:					TOTAL =	521.3
CITY OF ELGIN 150 DEXTER COURT ELGIN, ILLINOIS 60120-5570						
ENERGY SUPPLY CONTACT: ELLIE SARALLO PHONE: (630) 424 5124 COMPANY: COMMONWEALTH EDISON						

THE TRAFFIC SIGNAL CONTROL EQUIPMENT FOR THIS PROJECT SHALL BE "EAGLE" TO MATCH THE EXISTING ADJACENT SYSTEM.