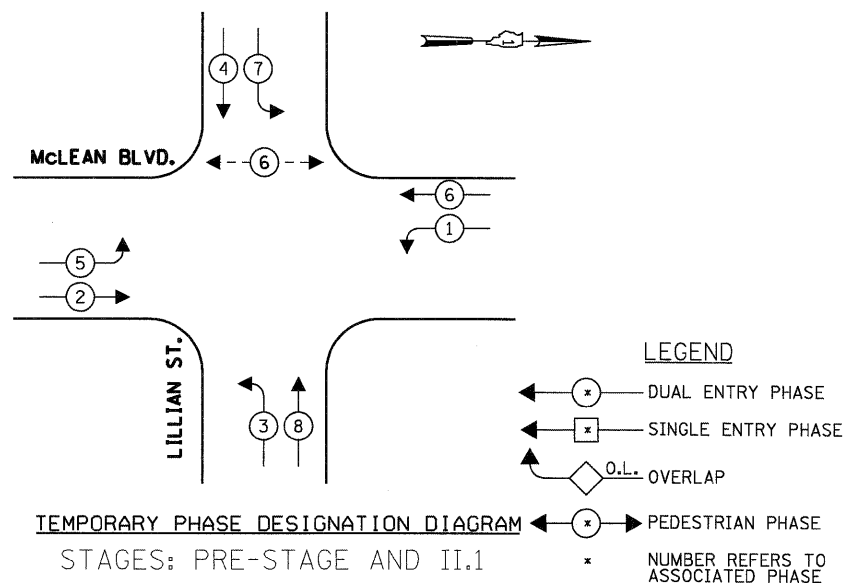
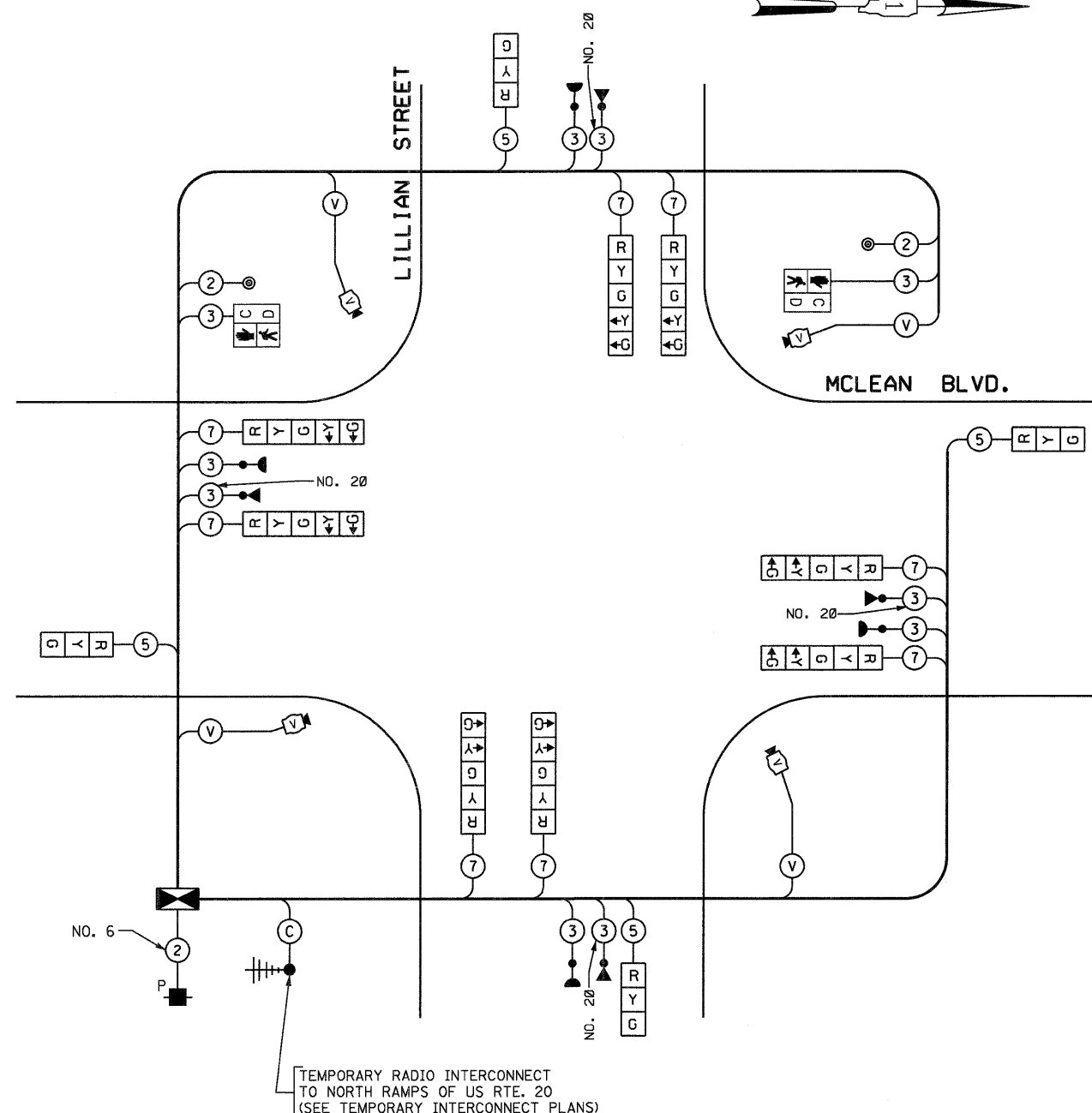
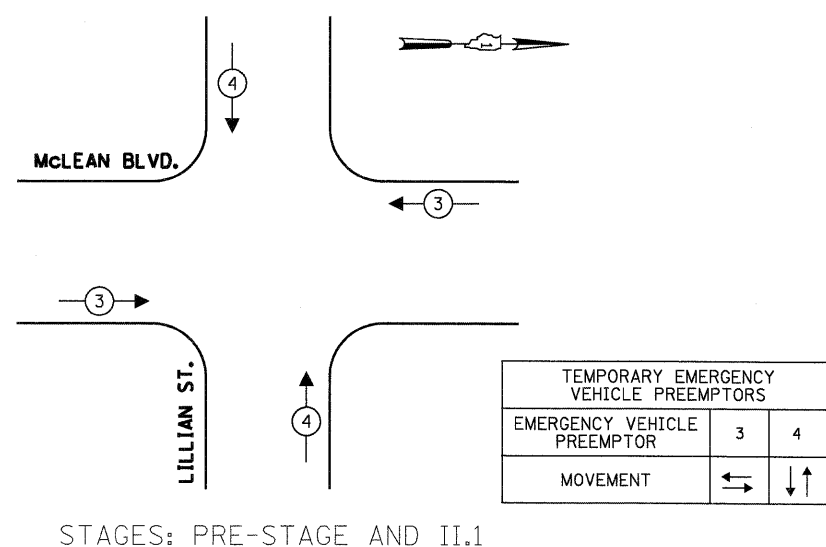


**CONTROLLER SEQUENCE**



**TEMPORARY EMERGENCY VEHICLE PREEMPTION SEQUENCE**



**TEMPORARY CABLE PLAN**

STAGES: PRE-STAGE AND II.1  
(NOT TO SCALE)

THE TRAFFIC SIGNAL CONTROL EQUIPMENT FOR THIS PROJECT SHALL BE "EAGLE" TO MATCH THE EXISTING ADJACENT SYSTEM.

I.D.O.T. TRAFFIC SIGNAL INSTALLATION ELECTRICAL SERVICE REQUIREMENTS						TOTAL WATTAGE
TYPE	NO LAMPS	WATTAGE		%OPERATION		
SIGNAL (RED)	12	135	17	0.50	102	
(YELLOW)	12	135	25	0.25	75	
(GREEN)	12	135	15	0.25	45	
ARROW	16	135	12	0.10	19.2	
PED. SIGNAL	2	90	25	1.00	50	
CONTROLLER	1	100	100	1.00	100	
ILLUM. SIGN				0.05		
VIDEO SYSTEM	1	150		1.00	150	
FLASHER				0.50		
ENERGY COSTS TO:					TOTAL =	541.2
CITY OF ELGIN 150 DEXTER COURT ELGIN, ILLINOIS 60120-5570						
ENERGY SUPPLY CONTACT: ELLIE SARALLO PHONE: (630) 424 5124 COMPANY: COMMONWEALTH EDISON						