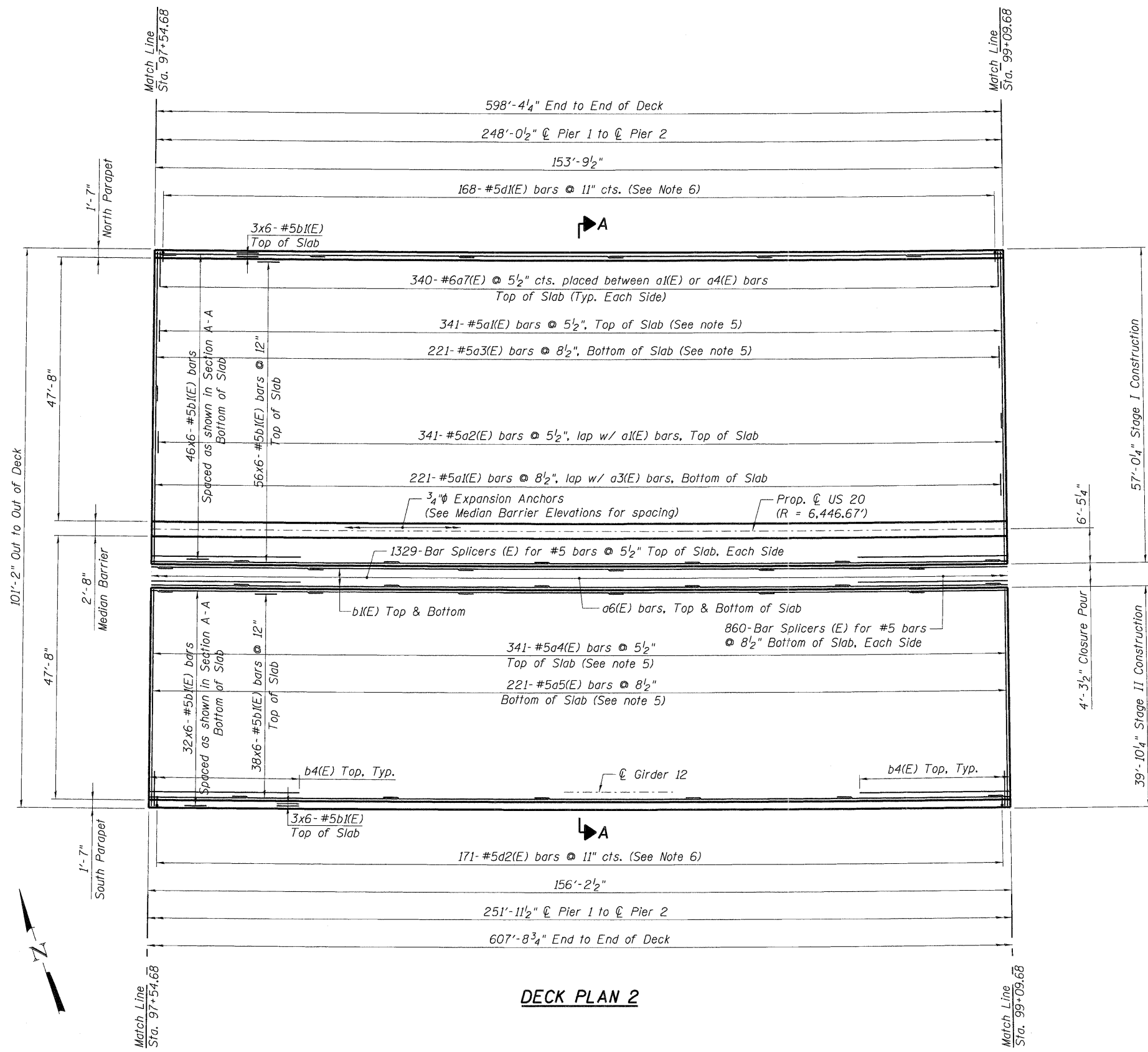
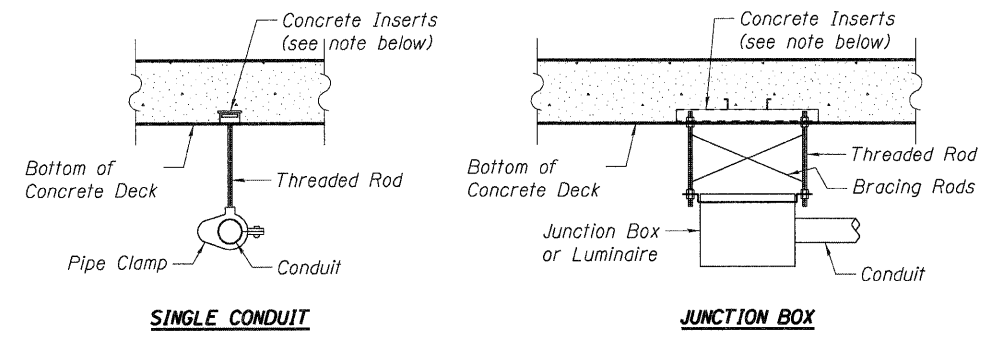


\\0450077-60H45-001-SUPER.DGN, \\ALL\SNLK-60H45-001-BORDER.DGN, \\DIMASTER-ALIGNMENT.DGN, \\0450077-60H45-004-SUPER.SHT.DGN
 12-12-2011, 10:38:44
 \\FS-004\1\AM\VAULT\1-D-TRANS\07\2202\21379-021\STRUCT\CAD\60H45-0450077-SHEET\0450077-SUPER.SHT.DGN
 BAJZEKKJ

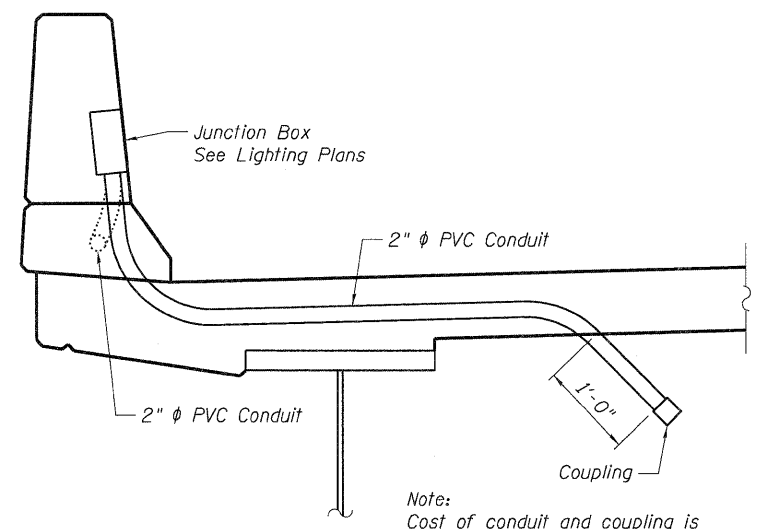


DECK PLAN 2



Note:
 The hanger assemblies for underpass lighting items including concrete inserts shall be furnished and installed as part of the conduit, junction box, or luminaire pay items. Refer to underpass lighting plans for sizes, numbers, locations, and limits of conduits, junction boxes, and luminaires. The Contractor shall be responsible for installation of the concrete inserts according to the layout and installation details included in approved underpass lighting shop drawings.

HANGER ASSEMBLIES FOR UNDERPASS LIGHTING ITEMS ATTACHED TO CONCRETE DECK



DETAIL 1
 North Parapet at Sta. 99+54.68
 (Reinforcement not shown for clarity.)

Note:
 See Sht. S-17 for notes.

FILE NAME =	USER NAME = #USER#	DESIGNED - MDB	REVISED -	STATE OF ILLINOIS DEPARTMENT OF TRANSPORTATION US 20 OVER MCLEAN BOULEVARD	DECK PLAN 2 OF 3	F.A.P. RTE.	SECTION	COUNTY	TOTAL SHEETS	SHEET NO.	
#FILEL#		DRAWN - MDB	REVISED -			345	BR-R	KANE	794	490	
PLOT SCALE = #SCALE#		CHECKED - PK	REVISED -			SN 045-0077 CONTRACT NO. 60H45					
PLOT DATE = #DATE#		DATE - 12/16/11	REVISED -			FED. ROAD DIST. NO. 7 ILLINOIS FED. AID PROJECT					
					SCALE:	SHEET NO. S-18	OF S-62	STATION 98+32.18			