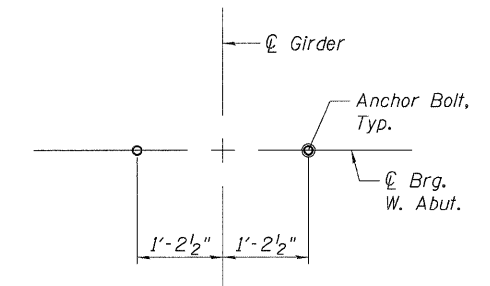


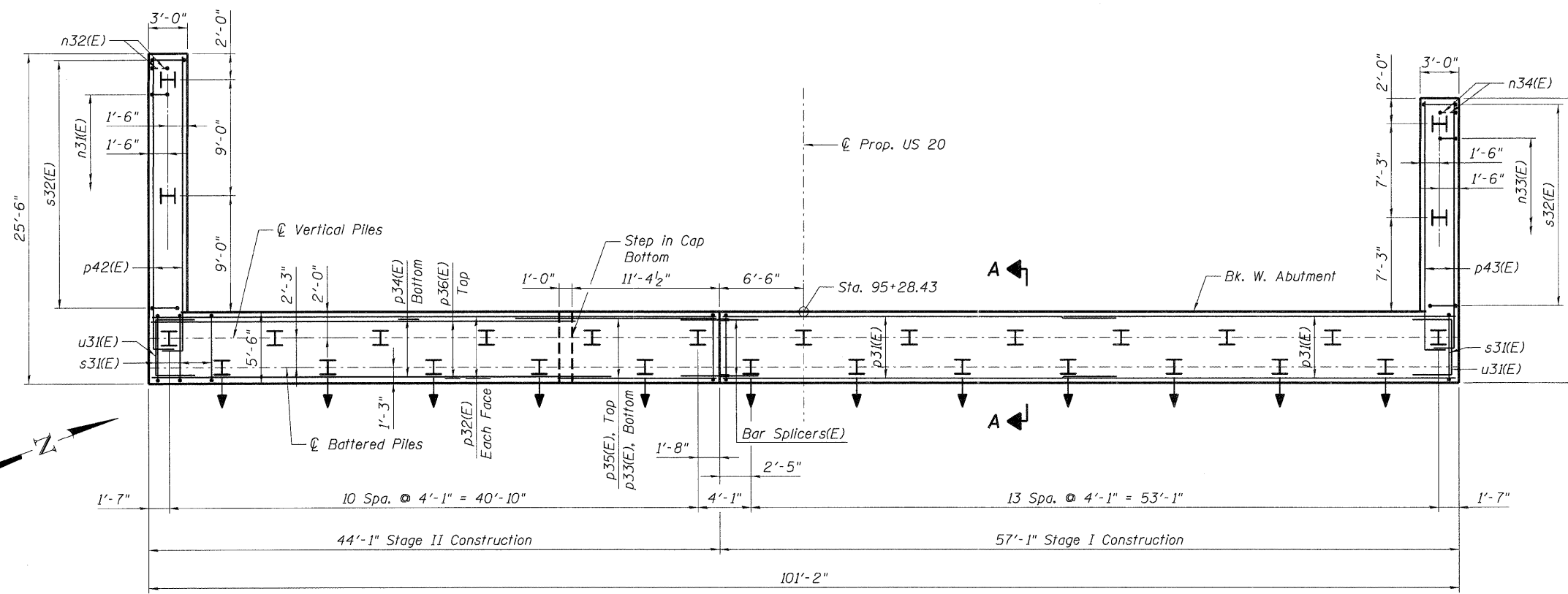
TOP VIEW



ANCHOR BOLT LAYOUT

BEARING SEAT ELEVATIONS

Girder	Elev.
1	842.65
2	842.88
3	843.10
4	843.32
5	843.54
6	843.32
7	843.32
8	843.54
9	843.76
10	843.99
11	844.21
12	844.43



PLAN - W. ABUTMENT CAP

PILE DATA

Type: Steel - HP14x73 with pile shoes
 Nominal Required Bearing: 455 kips
 Factored Resistance Available: 250 kips
 Est. Length: 28'
 No. Production Piles: 28
 No. Test Piles: 1

Notes:

1. Work this sheet with Shts. S-44 & S-45.
2. Cast steps monolithically with cap.
3. Space top reinforcement in cap to miss anchor bolts.
4. Hatched area to be poured after superstructure false work has been removed. Quantity of concrete included with Concrete Superstructure.
5. End post shall be poured after bridge parapet is in place. Quantity of concrete included with Concrete Superstructure.
6. For Anchor Bolt and Bearing details, see Sht. S-41.
7. For Steel H-Pile and Concrete Encasement details, see Sht. S-55.
8. For Bar Splicer details, see Sht. S-54.
9. For Form Liner details, see Sht. S-56.
10. Cost of conduit is included in Concrete Superstructure.
11. Cost of anchor bolts for traffic barrier terminal connection is included in Concrete Superstructure.
12. E.F. = Each Face
I.F. = Inside Face
O.F. = Outside Face

FILE NAME = ... \ALLSNUM-60H45-001-ABUTMENT.DGN, ... \0450077-60H45-001-ABUTMENT_SHT.DGN
 #FILEL#
 TENG & ASSOCIATES, INC.
 ENGINEERS/ARCHITECTS/PLANNERS
 CHICAGO, ILLINOIS
 DATE - 12/16/11
 WEST ABUTMENT PLAN AND ELEVATION
 SECTION BR-R
 COUNTY KANE
 TOTAL SHEETS 794
 SHEET NO. 515
 SN 045-0077
 CONTRACT NO. 60H45
 SCALE: SHEET NO. S-43 OF S-62 STATION 98+32.18
 FED. ROAD DIST. NO. 7 ILLINOIS FED. AID PROJECT