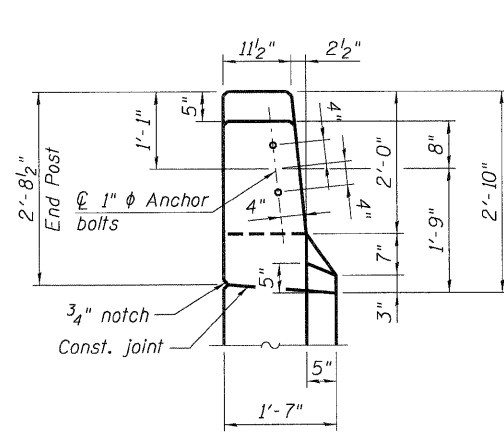


**BAR LIST**

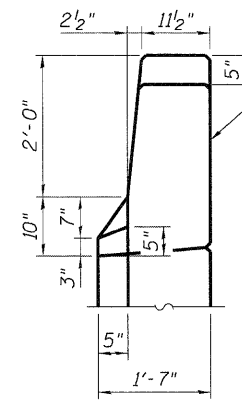
Bar	No.	Size	Length	Shape
h31(E)	30	#5	29'-2"	▬
h32(E)	15	#5	42'-3"	▬
h33(E)	8	#6	29'-2"	▬
h34(E)	4	#6	42'-3"	▬
h35(E)	36	#5	4'-7"	▬
h36(E)	17	#4	21'-8"	▬
h37(E)	13	#4	21'-8"	▬
h38(E)	16	#4	18'-2"	▬
h39(E)	12	#4	18'-2"	▬
n31(E)	20	#6	17'-4"	▬
n32(E)	6	#6	8'-9"	▬
n33(E)	16	#6	15'-8"	▬
n34(E)	6	#6	7'-11"	▬
p31(E)	42	#7	30'-9"	▬
p32(E)	8	#7	43'-10"	▬
p33(E)	6	#7	13'-8"	▬
p34(E)	6	#7	35'-0"	▬
p35(E)	7	#7	15'-6"	▬
p36(E)	7	#7	33'-2"	▬
p37(E)	7	#5	9'-11"	▬
p38(E)	7	#5	32'-0"	▬
p39(E)	7	#5	12'-0"	▬
p40(E)	7	#5	18'-6"	▬
p41(E)	7	#5	7'-5"	▬
p42(E)	16	#9	24'-3"	▬
p43(E)	16	#9	20'-9"	▬
s31(E)	148	#5	19'-7"	▬
s32(E)	36	#5	11'-7"	▬
u31(E)	12	#6	11'-2"	▬
u32(E)	80	#5	9'-6"	▬
v31(E)	99	#5	3'-10"	▬
v32(E)	99	#4	2'-11"	▬
v33(E)	42	#6	9'-10"	▬
v34(E)	36	#6	10'-0"	▬
v35(E)	6	#6	9'-6"	▬
v36(E)	99	#5	9'-5"	▬
v37(E)	99	#5	10'-8"	▬

**BILL OF MATERIAL**

Item	Unit	Total
Structure Excavation	Cu. Yd.	324
Concrete Structures	Cu. Yd.	187.8
Concrete Superstructure	Cu. Yd.	12.2
Concrete Encasement	Cu. Yd.	15.8
Form Liner Textured Surface	Sq. Ft.	270
Protective Coat	Sq. Yd.	18
Reinforcement Bars, Epoxy Coated	Pound	20,210
Furnishing Steel Piles HP 14x73	Foot	784
Driving Piles	Foot	784
Test Pile Steel HP14x73	Each	1
Pile Shoes	Each	29
Concrete Sealer	Sq. Ft.	1,251
Geocomposite Wall Drain	Sq. Yd.	128
Porous Granular Embankment, Special	Cu. Yd.	341
Pipe Underdrains for Structures 4"	Foot	132

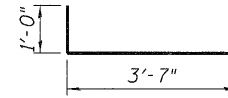


**VIEW C-C**

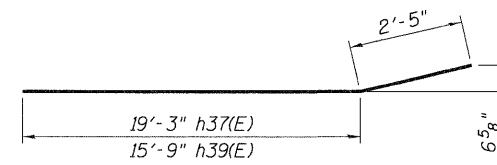


**VIEW D-D**

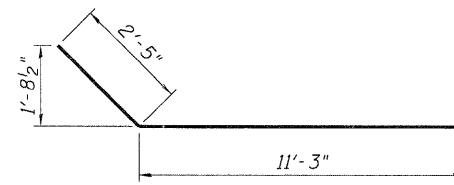
See Standard 631031 for location of 1" phi holes for Type 6 Traffic Barrier Terminal connection.



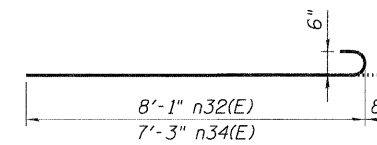
**h37(E) BARS**



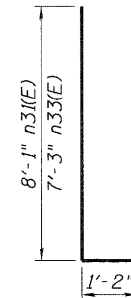
**h37(E) & h39(E) BARS**



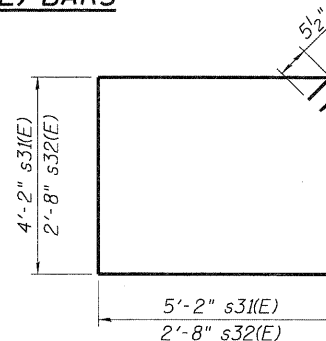
**p33(E) BARS**



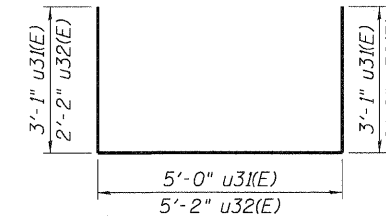
**n32(E) & n34(E) BARS**



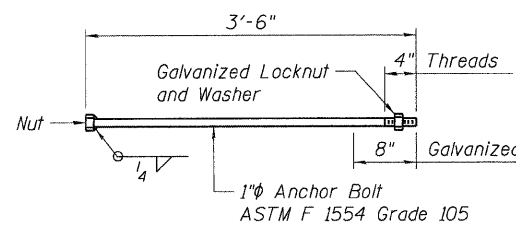
**n31(E) & n33(E) BARS**



**s31(E) & s32(E) BARS**

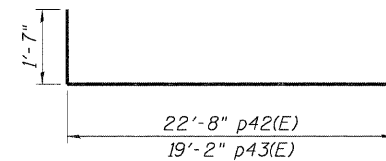


**u31(E) & u32(E) BARS**

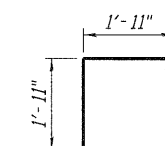


**ANCHOR BOLT DETAILS**

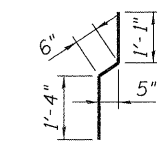
(For Type 5 Traffic Barrier Terminal connection)



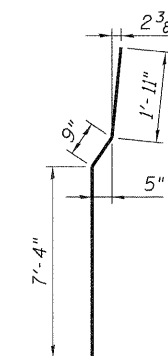
**p42(E) & p43(E) BARS**



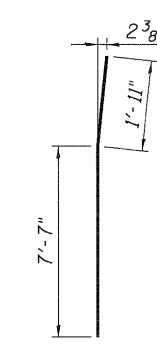
**v31(E) BARS**



**v32(E) BARS**



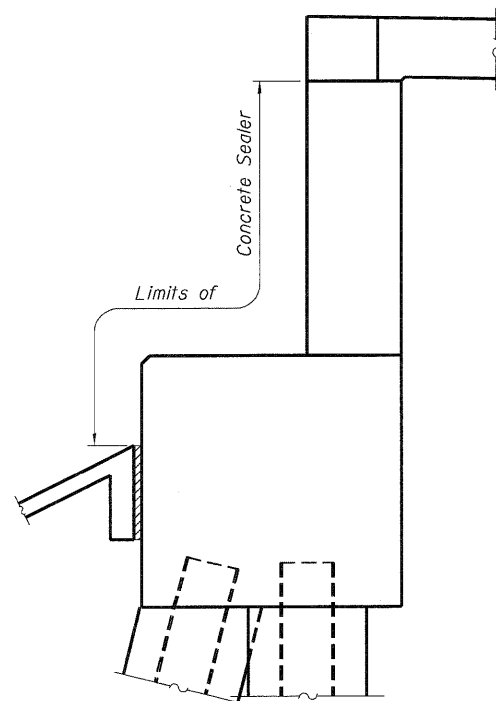
**v34(E) BARS**



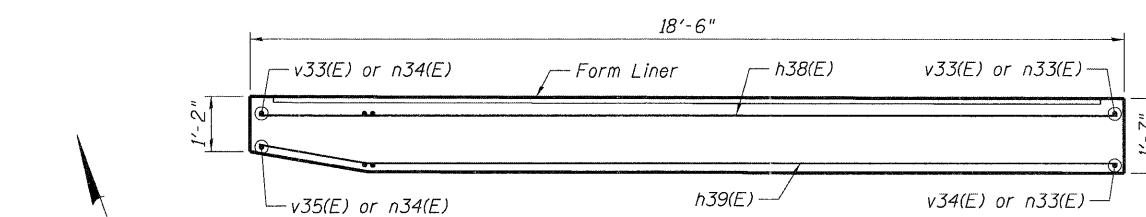
**v35(E) BARS**

**Note:**

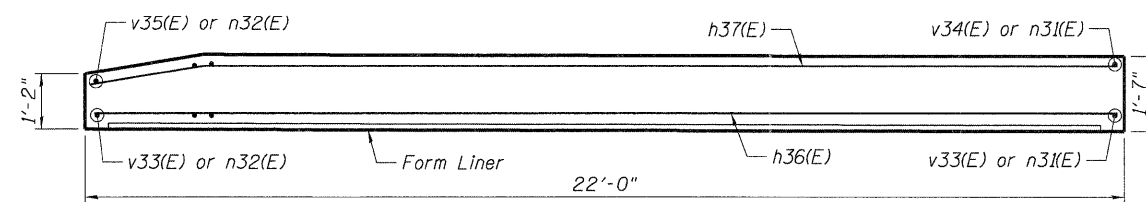
See Sht. S-43 for notes.



**LIMITS OF CONCRETE SEALER**



**NORTHWEST WINGWALL PLAN**



**SOUTHWEST WINGWALL PLAN**

**STATE OF ILLINOIS  
DEPARTMENT OF TRANSPORTATION  
US 20 OVER MCLEAN BOULEVARD**

**WEST ABUTMENT  
DETAILS 2 OF 2**

FILE NAME =	USER NAME = #USER#	DESIGNED - PK	REVISED -
#FILEL#		DRAWN - PK	REVISED -
		CHECKED - MDB	REVISED -
		DATE - 12/16/11	REVISED -

**TENG** TENG & ASSOCIATES, INC.  
ENGINEERS/ARCHITECTS/PLANNERS  
CHICAGO, ILLINOIS

F.A.P. RTE. 345	SECTION BR-R	COUNTY KANE	TOTAL SHEETS 794	SHEET NO. 517
SCALE:		SHEET NO. S-45 OF S-62	STATION 98+32.18	
SN 045-0077			CONTRACT NO. 60H45	
FED. ROAD DIST. NO. 7 [ILLINOIS] FED. AID PROJECT				

FILE NAME = \\F:\0450077-60H45-001-ABUTMENT.DGN, USER NAME = #USER#, DESIGNED - PK, REVISED -  
 #FILEL#, DRAWN - PK, CHECKED - MDB, REVISED -  
 DATE - 12/16/11, PLOT SCALE = #SCALE#, PLOT DATE = #DATE#  
 TENG & ASSOCIATES, INC. ENGINEERS/ARCHITECTS/PLANNERS CHICAGO, ILLINOIS  
 STATE OF ILLINOIS DEPARTMENT OF TRANSPORTATION US 20 OVER MCLEAN BOULEVARD WEST ABUTMENT DETAILS 2 OF 2  
 F.A.P. RTE. 345 SECTION BR-R COUNTY KANE TOTAL SHEETS 794 SHEET NO. 517  
 SCALE: SHEET NO. S-45 OF S-62 STATION 98+32.18 SN 045-0077 CONTRACT NO. 60H45  
 FED. ROAD DIST. NO. 7 [ILLINOIS] FED. AID PROJECT