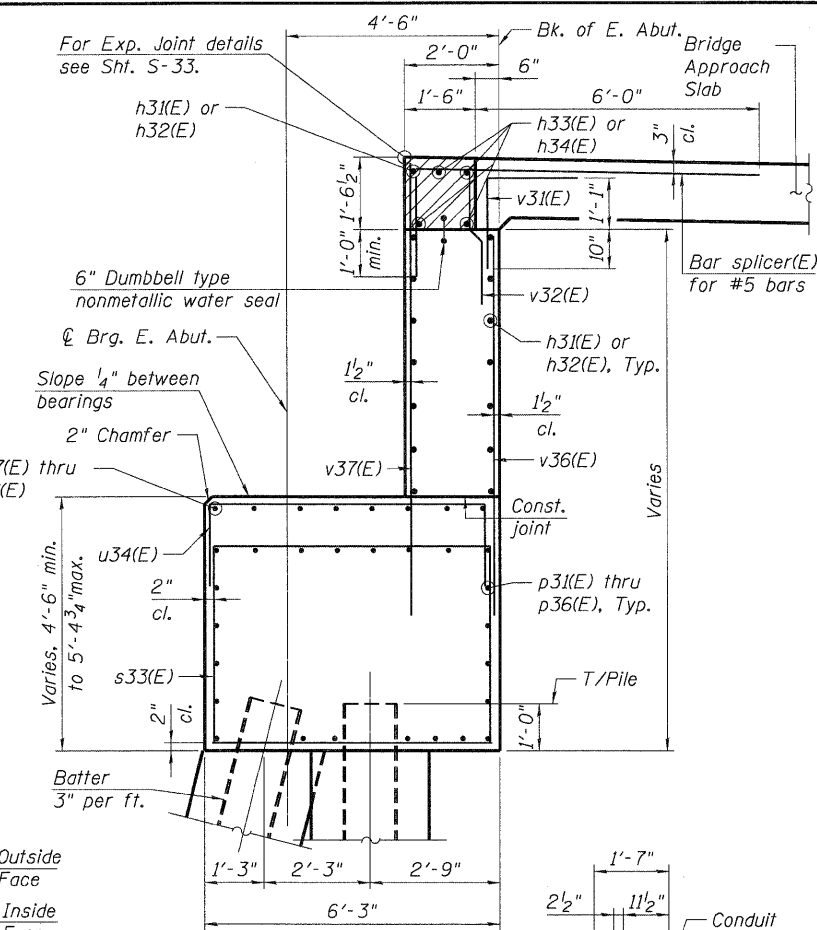
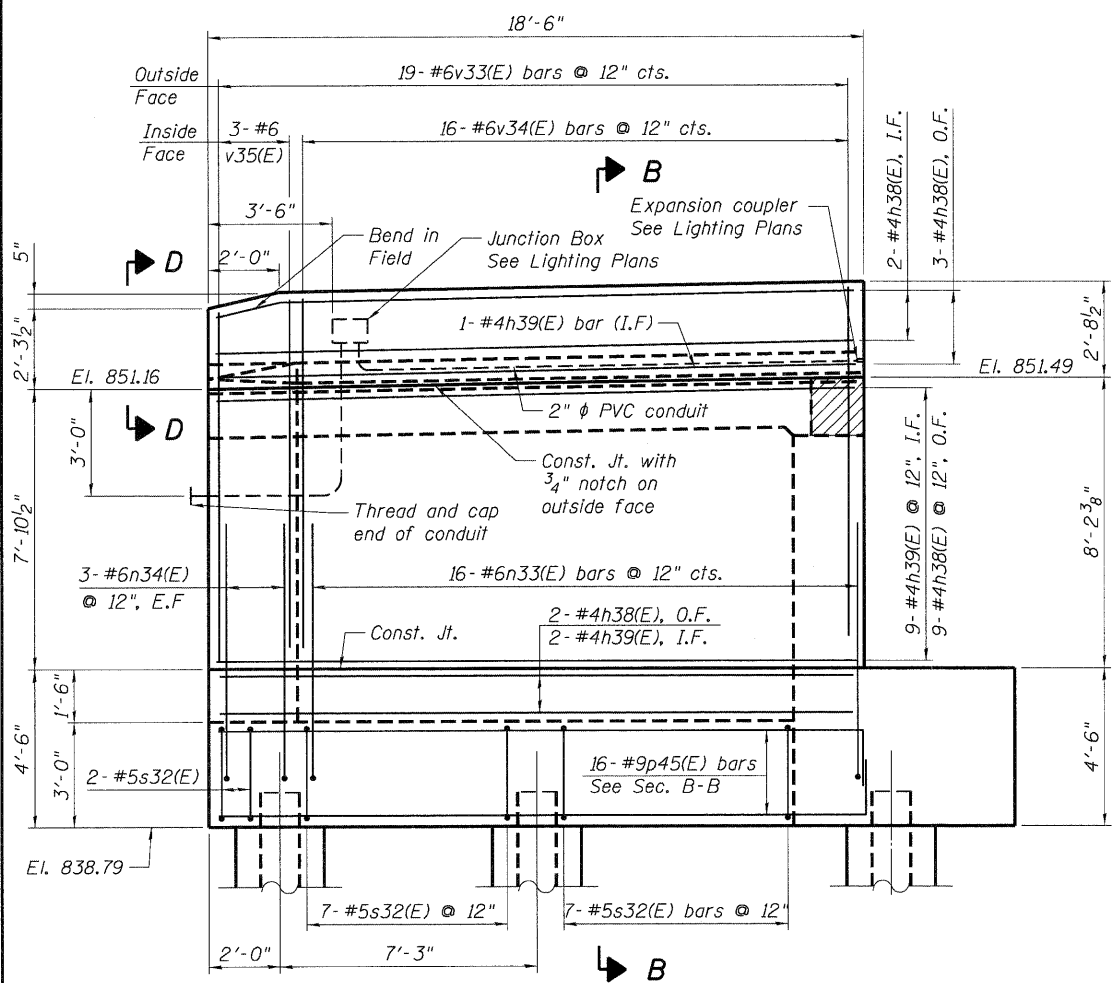


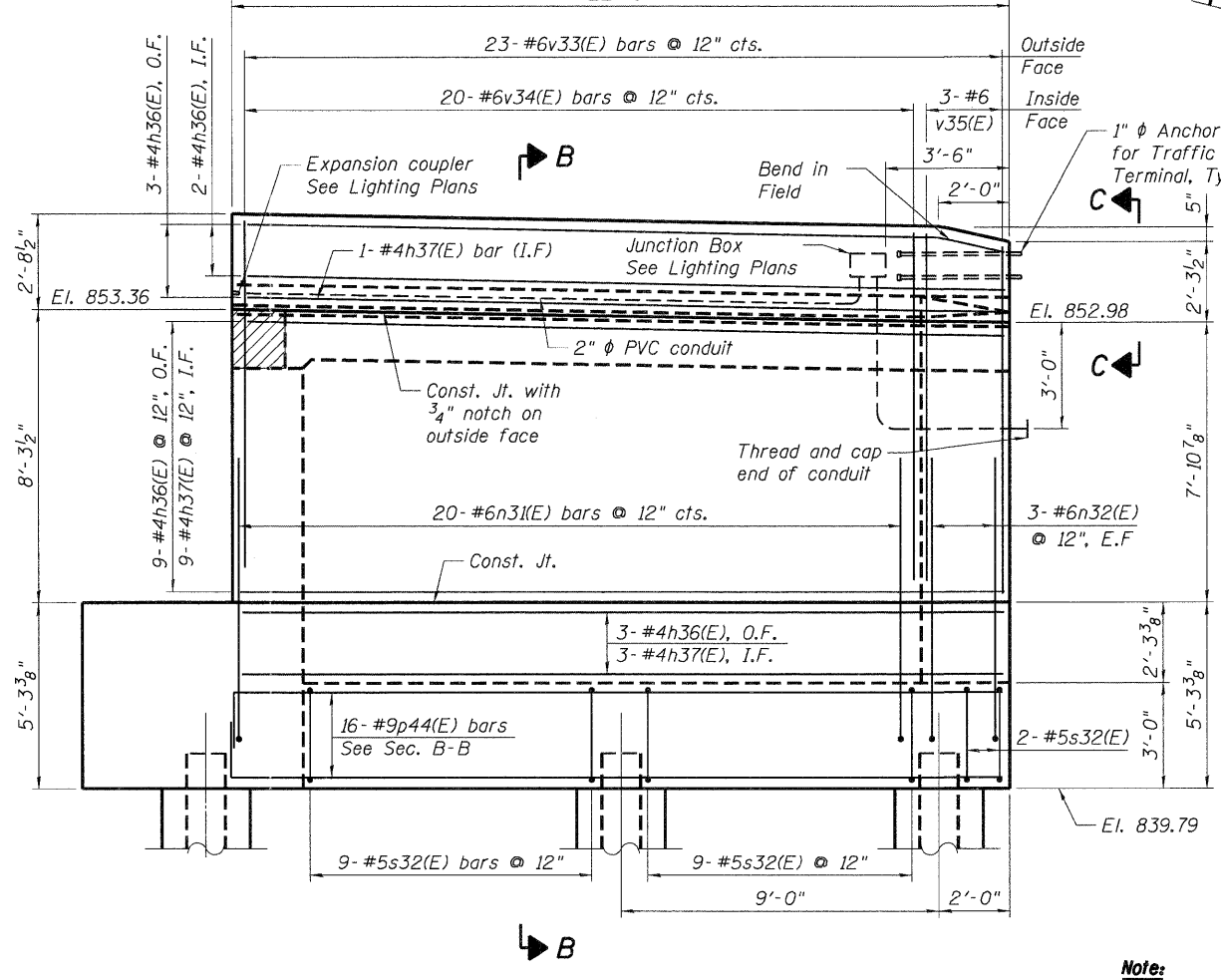
**ELEVATION**  
(Looking East)



**SECTION A-A**



**NORTHEAST WING WALL ELEVATION**  
(Looking South)



**SOUTHEAST WING WALL ELEVATION**  
(Looking North)

**Note:**  
See Sht. S-46 for notes.

**SECTION B-B**

FILE NAME = ...  
 USER NAME = ...  
 DESIGNED - PK  
 DRAWN - PK  
 CHECKED - MDB  
 DATE - 12/16/11

<b>TENG</b> TENG & ASSOCIATES, INC. ENGINEERS/ARCHITECTS/PLANNERS CHICAGO, ILLINOIS	FILE NAME = #FILE#	USER NAME = #USER#	DESIGNED - PK DRAWN - PK CHECKED - MDB DATE - 12/16/11	REVISED - REVISED - REVISED - REVISED -	<b>STATE OF ILLINOIS</b> <b>DEPARTMENT OF TRANSPORTATION</b> US 20 OVER MCLEAN BOULEVARD	<b>EAST ABUTMENT</b> <b>DETAILS 1 OF 2</b>	F.A.P. RTE. 345	SECTION BR-R	COUNTY KANE	TOTAL SHEETS 794	SHEET NO. 519
	PLOT SCALE = #SCALE# PLOT DATE = #DATE#	SCALE:	SHEET NO. S-47 OF S-62	STATION 98+32.18	SN 045-0077	CONTRACT NO. 60H45	FED. ROAD DIST. NO. 7 ILLINOIS FED. AID PROJECT				