

BAR LIST

Bar	No.	Size	Length	Shape
h51(E)	14	#5	49'-11"	
h52(E)	14	#5	39'-11"	
h53(E)	6	#5	10'-5"	
h54(E)	6	#5	32'-11"	
h55(E)	6	#5	40'-7"	
h56(E)	6	#5	19'-0"	
h57(E)	6	#5	5'-2"	
p51(E)	14	#10	55'-6"	
p52(E)	14	#10	40'-6"	
p53(E)	15	#10	59'-2"	
p54(E)	15	#10	44'-2"	
p55(E)	10	#6	55'-6"	
p56(E)	10	#6	40'-6"	
s51(E)	92	#6	16'-6"	
s52(E)	92	#6	12'-2"	
s53(E)	270	#5	15'-7"	
s54(E)	87	#5	9'-8"	
s55(E)	270	#5	10'-7"	
sp51(E)	7	#5	6'-0 3/4"	
t51(E)	98	#9	11'-8"	
t52(E)	100	#9	14'-10"	
t53(E)	4	#5	11'-8"	
u51(E)	10	#5	11'-5"	
u52(E)	16	#6	14'-4"	
u53(E)	216	#5	9'-0"	
v51(E)	112	#9	13'-6"	
v52(E)	14	#5	4'-3"	
v53(E)	7	#5	3'-8"	
v54(E)	7	#5	5'-5"	
w51(E)	32	#9	53'-9"	
w52(E)	32	#9	43'-9"	
w53(E)	4	#5	53'-9"	
w54(E)	4	#5	43'-9"	

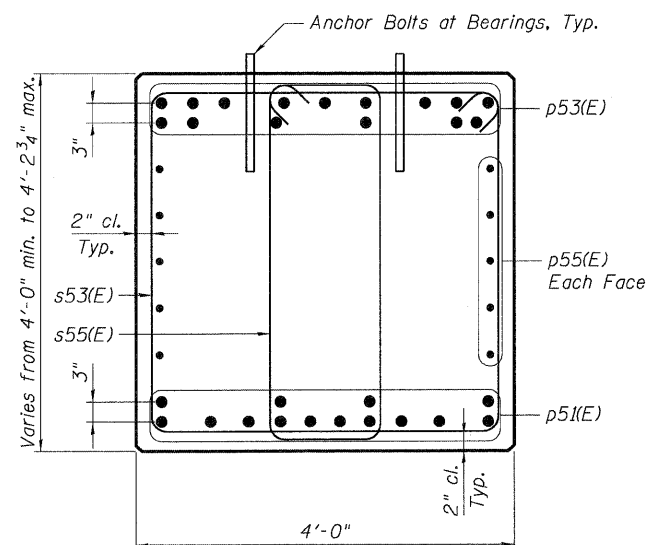
* Length is height of spiral.

BILL OF MATERIAL

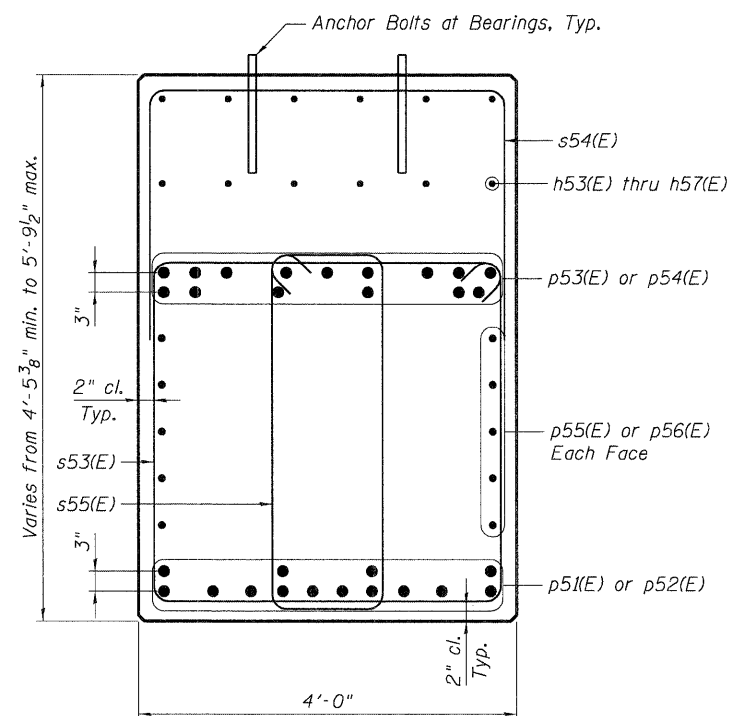
Item	Unit	Total
Structure Excavation	Cu. Yd.	242
Concrete Structures	Cu. Yd.	304.9
Reinforcement Bars, Epoxy Coated	Pound	57,360
Furnishing Steel Piles HP14x73	Foot	3,239
Driving Piles	Foot	3,239
Test Pile Steel HP14x73	Each	1
Pile Shoes	Each	80

Notes:

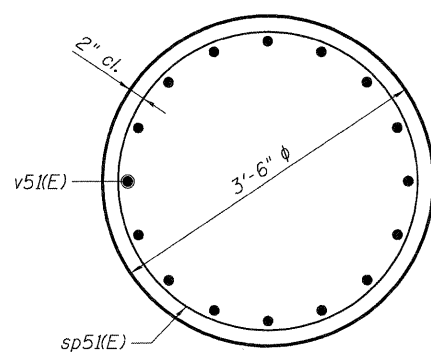
1. Work this sheet with Sht. S-49.
2. Concrete Sealer shall be applied to all exposed surfaces of the pier, from bottom of crashwall to top of cap.
3. For Bar Splicer quantity and details, see Sht. S-54.



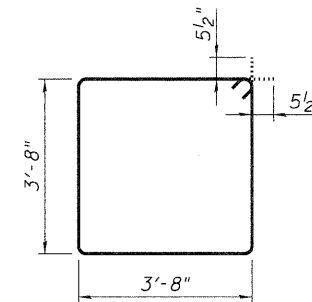
SECTION A-A



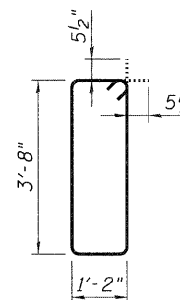
SECTION B-B



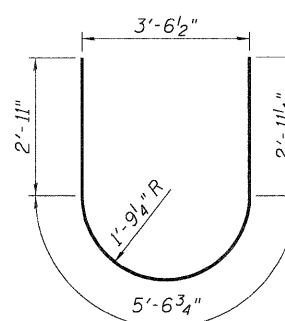
SECTION C-C



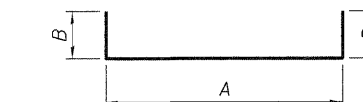
s53(E) BAR



s55(E) BAR

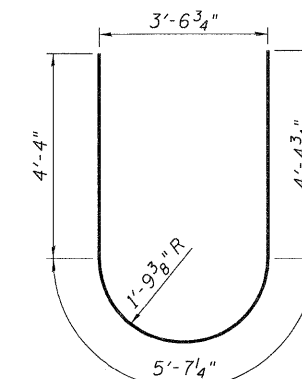


u51(E) BAR

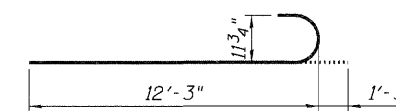


p53(E), p54(E), s51(E), s52(E), s54(E), t52(E), u53(E)

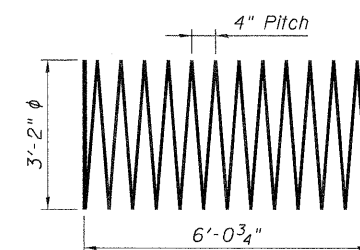
BAR	A	B
p53(E)	55'-6"	1'-10"
p54(E)	40'-6"	1'-10"
s51(E)	3'-8"	6'-4"
s52(E)	3'-8"	4'-3"
s54(E)	3'-8"	3'-0"
t52(E)	11'-8"	1'-7"
u53(E)	3'-0"	3'-0"



u52(E) BAR



v51(E) BAR



sp51(E) BAR

**STATE OF ILLINOIS
DEPARTMENT OF TRANSPORTATION
US 20 OVER MCLEAN BOULEVARD**

**PIER 1
DETAILS AND BAR LIST**

F.A.P. RTE.	SECTION	COUNTY	TOTAL SHEETS	SHEET NO.
345	BR-R	KANE	794	522

SN 045-0077 CONTRACT NO. 60H45
FED. ROAD DIST. NO. 7 ILLINOIS FED. AID PROJECT

FILE NAME =	USER NAME = *USER*	DESIGNED -	REVISIONS -
#FILE#		MDB	MDB
		MDB	MDB
		PK	PK
		12/16/11	12/16/11

TENG TENG & ASSOCIATES, INC.
ENGINEERS/ARCHITECTS/PLANNERS
CHICAGO, ILLINOIS

\0450077-60H45-001-PIER.DGN, \0450077-60H45-001-PIER.DGN, \ALL\SNUM-60H45-001-BORDER.DGN
 12-12-2011, 10:40:41
 BA\ZK\J \NFS-2011\0450077-60H45-001-PIER.DGN, \NFS-2011\0450077-60H45-001-PIER.SHT.DGN