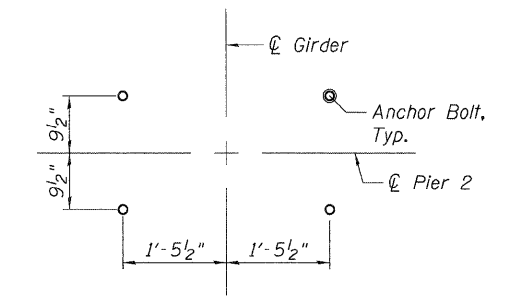
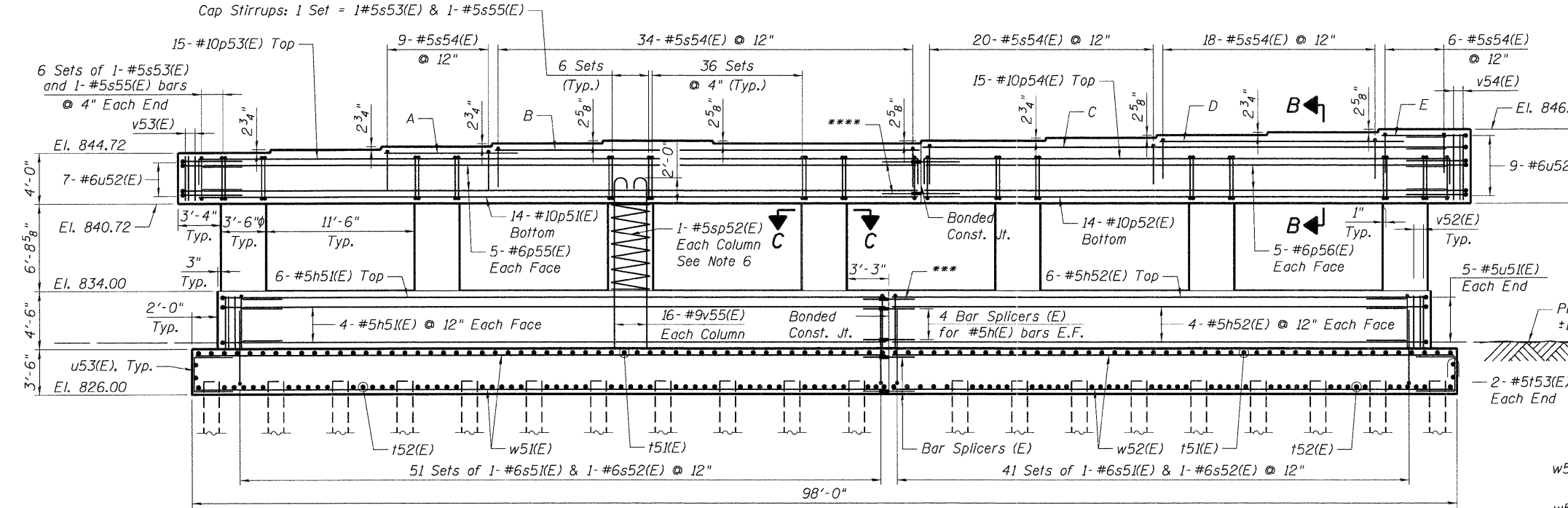


BEARING SEAT ELEVATIONS

Girder	Elev.
1	844.72
2	844.94
3	845.17
4	845.39
5	845.61
6	845.39
7	845.39
8	845.61
9	845.84
10	846.06
11	846.28
12	846.51

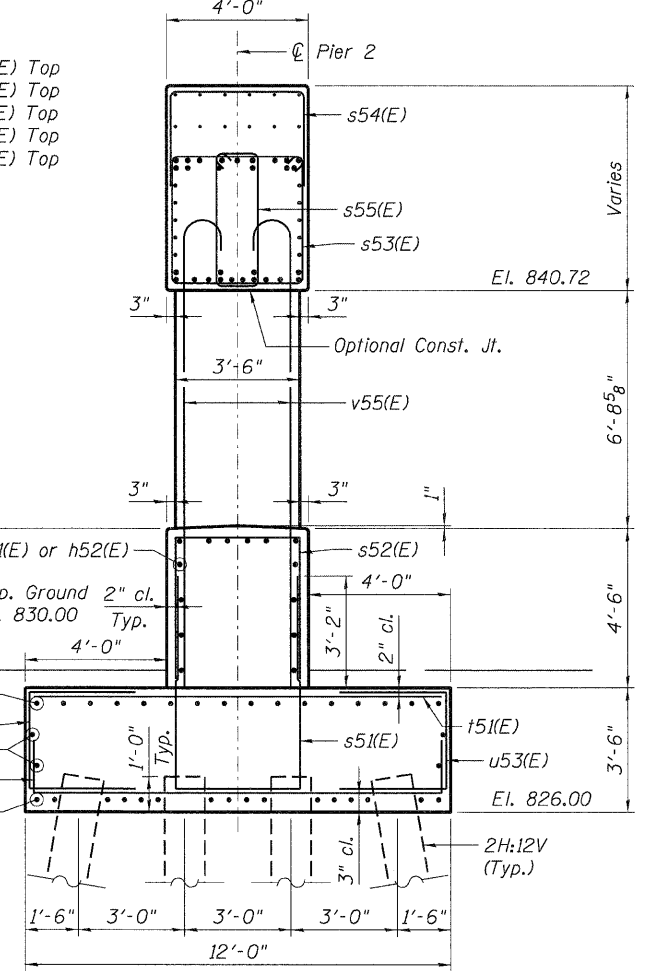


CAP PLAN



PIER 2 ELEVATION
(Looking East)

- A: 6-#5h53(E) Top
- B: 6-#5h54(E) Top
- C: 6-#5h55(E) Top
- D: 6-#5h56(E) Top
- E: 6-#5h57(E) Top



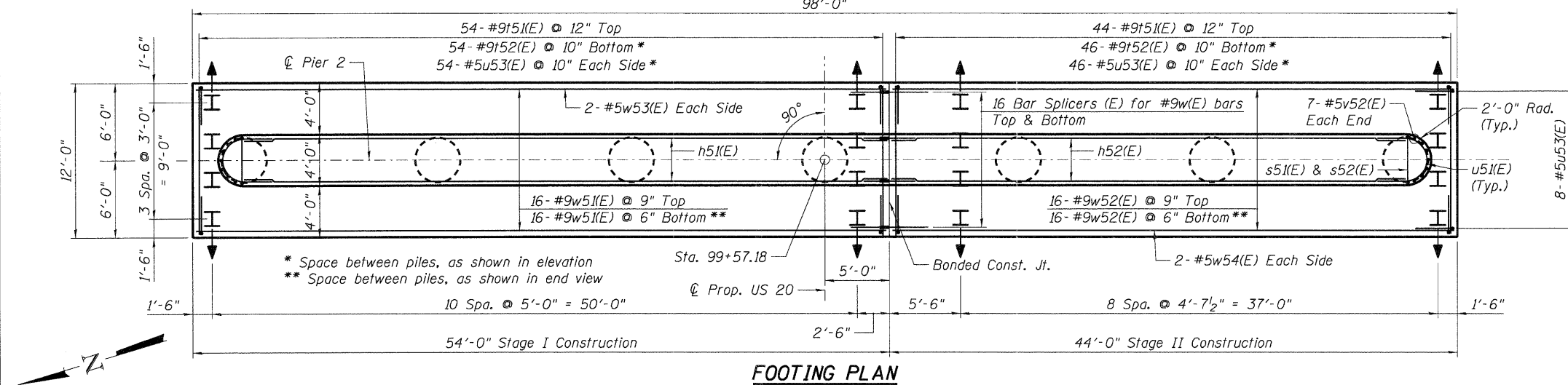
END VIEW

PILE DATA

Type: Steel - HP14x73 with pile shoes
 Nominal Required Bearing: 400 kips
 Factored Resistance Available: 220 kips
 Est. Length: 17'
 No. Production Piles: 79
 No. Test Piles: 1

Notes:

1. Work this sheet with Sht. S-52.
2. Cast steps monolithically with cap.
3. Space top reinforcement in cap to miss anchor bolts.
4. For Anchor Bolt and Bearing details, see Sht. S-41.
5. For Steel H-Pile details, see Sht. S-55.
6. Provide 1/2 extra turns top and bottom. Extend spiral 2\"/>
- 7. E.F. = Each Face



FOOTING PLAN

FILE NAME = #FILEL#
 USER NAME = #USER#
 DESIGNED - MDB
 DRAWN - MDB
 CHECKED - PK
 DATE - 12/16/11
 REVISED -
 REVISED -
 REVISED -
 REVISED -
 STATE OF ILLINOIS
 DEPARTMENT OF TRANSPORTATION
 US 20 OVER MCLEAN BOULEVARD
 PIER 2
 PLAN AND ELEVATION
 SCALE: SHEET NO. S-51 OF S-62 STATION 98+32.18
 F.A.P. RTE. SECTION COUNTY TOTAL SHEETS SHEET NO.
 345 8R-R KANE 794 523
 SN 045-0077 CONTRACT NO. 60H45
 FED. ROAD DIST. NO. 7 ILLINOIS FED. AID PROJECT

