

**STANDARD BAR SPLICER ASSEMBLY**

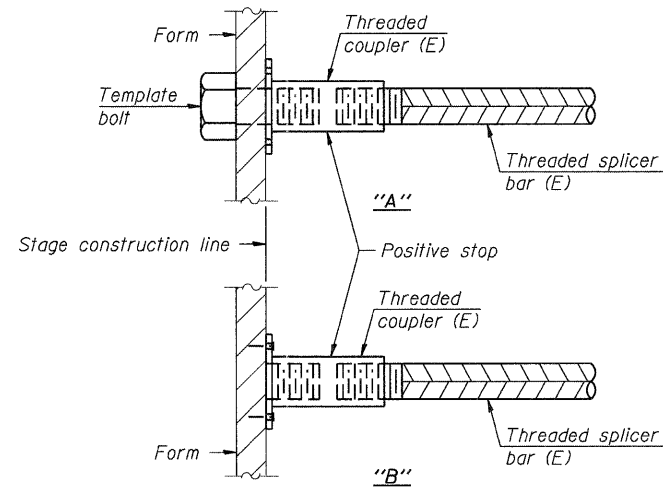
Bar size to be spliced	Minimum Lap Lengths				
	Table 1	Table 2	Table 3	Table 4	Table 5
3, 4	1'-5"	1'-11"	2'-1"	2'-4"	2'-3"
5	1'-9"	2'-5"	2'-7"	2'-11"	2'-10"
6	2'-1"	2'-11"	3'-1"	3'-6"	3'-4"
7	2'-9"	3'-10"	4'-2"	4'-8"	4'-6"
8	3'-8"	5'-1"	5'-5"	6'-2"	5'-10"
9	4'-7"	6'-5"	6'-10"	7'-9"	7'-5"

- Table 1: Black bar, 0.8 Class C
- Table 2: Black bar, Top bar lap, 0.8 Class C
- Table 3: Epoxy bar, 0.8 Class C
- Table 4: Epoxy bar, Top bar lap, 0.8 Class C
- Table 5: Epoxy bar, Top bar lap, Class B

Threaded splicer bar length = min. lap length + 1/2" + thread length

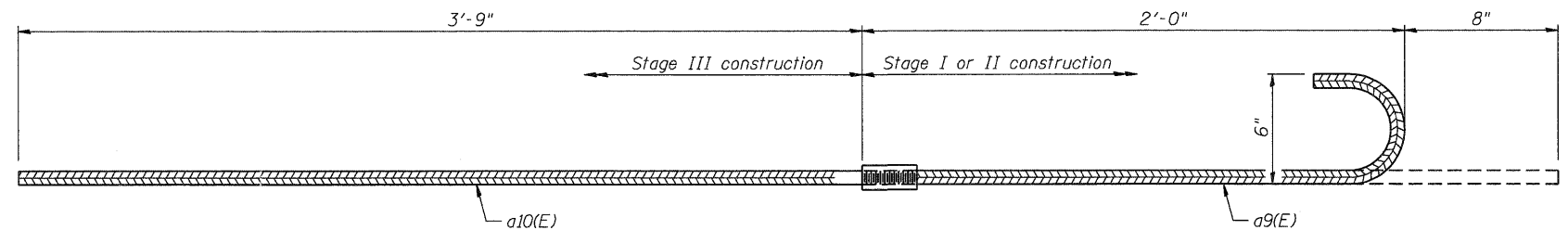
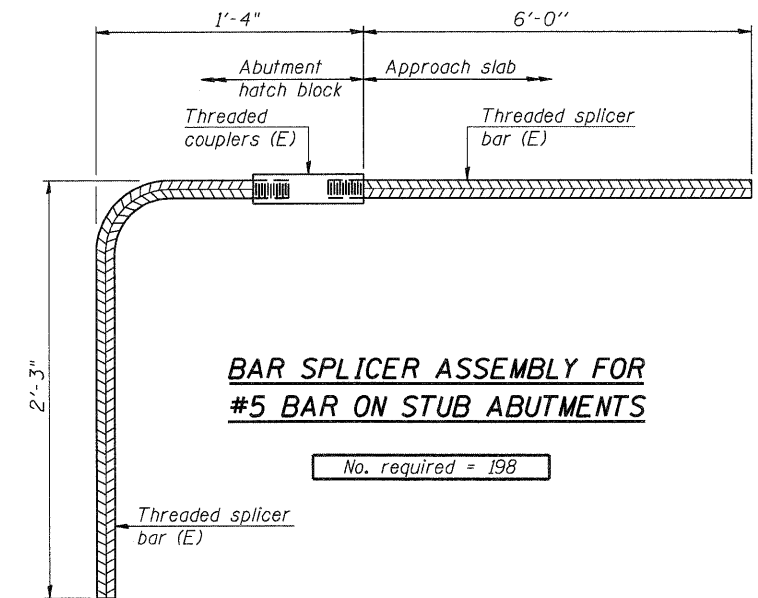
\* Epoxy not required on Bar Splicer Assembly components used in conjunction with black bars.

Location	Bar size	No. assemblies required	Table for minimum lap length
Deck - Stage I	#5	2189	3
Deck - Stage II	#5	2189	3
West Approach Pavement	#4	25	3
West Approach Pavement	#5	86	3
East Approach Pavement	#4	25	3
East Approach Pavement	#5	86	3
West Abutment	#5	15	4
West Abutment	#6	11	4
West Abutment	#7	21	4
East Abutment	#5	15	4
East Abutment	#6	12	4
East Abutment	#7	23	4
Pier 1	#5	14	4
Pier 1	#6	10	4
Pier 1	#9	32	4
Pier 1	#10	29	4
Pier 2	#5	14	4
Pier 2	#6	10	4
Pier 2	#9	32	4
Pier 2	#10	29	4



**INSTALLATION AND SETTING METHODS**

- "A" : Set bar splicer assembly by means of a template bolt.
- "B" : Set bar splicer assembly by nailing to wood forms or cementing to steel forms.
- (E) : Indicates epoxy coating.



**#6a9(E) & #6a10(E) BAR SPLICER ASSEMBLIES FOR EDGE BEAMS AT STAGE CONSTRUCTION JOINT**

No. required = 16

**NOTES**

- Splicer bars shall be deformed with threaded ends and have a minimum 60 ksi yield strength.
- All reinforcement shall be lapped and tied to the splicer bars.
- Bar splicer assemblies shall be epoxy coated according to the requirements for reinforcement bars. See Section 508 of the Standard Specifications.
- See approved list of bar splicer assemblies and mechanical splicers for alternatives.

FILE NAME = \\FS-024\4\ARK\VAULT\T.D-TRANS.07\2202\21379-001\STRUCT\CAD\60H45\045007\ASHEET.0450077.SHEET.0450077-001-BARSPLICERL.SHT.DGN  
 PLOT SCALE = \*SCALE\*  
 PLOT DATE = \*DATE\*  
 DESIGNED - MDB  
 DRAWN - MDB  
 CHECKED - PK  
 DATE - 12/16/11  
 REVISED -  
 REVISED -  
 REVISED -  
 REVISED -  
 STATE OF ILLINOIS  
 DEPARTMENT OF TRANSPORTATION  
 US 20 OVER MCLEAN BOULEVARD  
 BAR SPLICER DETAILS  
 F.A.P. RTE. 345  
 SECTION 8R-R  
 COUNTY KANE  
 TOTAL SHEETS 794  
 SHEET NO. 526  
 SN 045-0077  
 CONTRACT NO. 60H45  
 SCALE: SHEET NO. S-54 OF S-62 STATION 98+32.18  
 FED. ROAD DIST. NO. 7 ILLINOIS FED. AID PROJECT