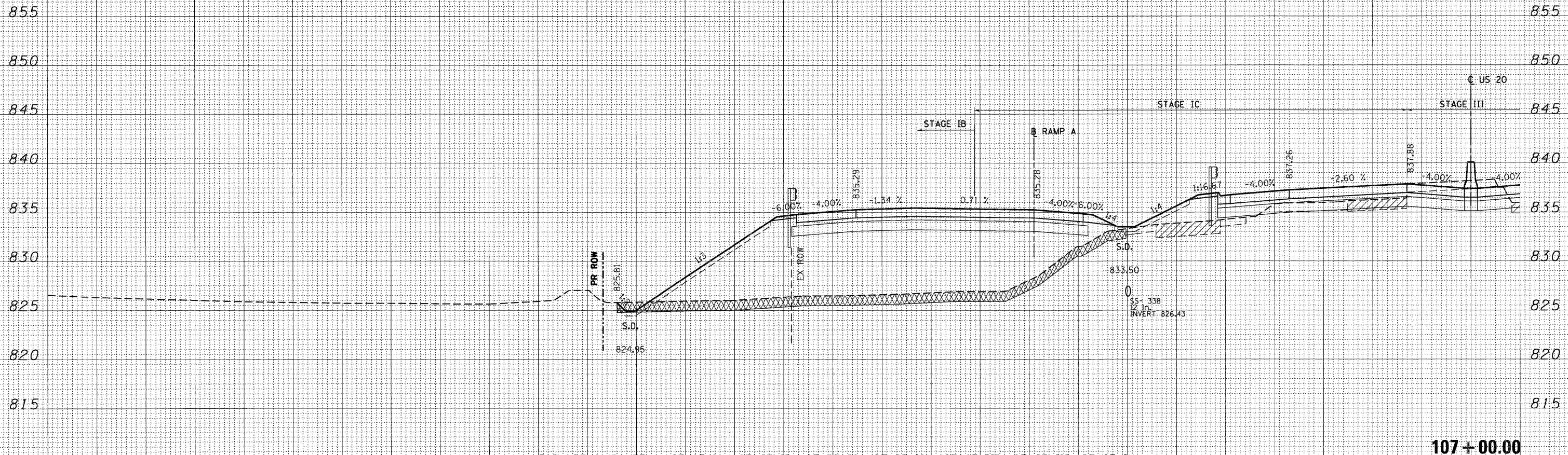


290 280 270 260 250 240 230 220 210 200 190 180 170 160 150 140 130 120 110 100 90 80 70 60 50 40 30 20 10 0 10

DATE	
BY	
SURVEYED	
PLOTTED	
TEMPLATE	
NOTE BOOK	
AREAS CHECKED	
NO.	

DATE	
BY	
SURVEYED	
PLOTTED	
TEMPLATE	
NOTE BOOK	
AREAS CHECKED	
NO.	



107+00.00

**LEGEND:**

- UNSUITABLE MATERIAL
- EXISTING PAVEMENT REMOVAL
- PGE SUBGRADE

END AREAS (SQ FT)	STAGE IA	STAGE IB	STAGE IC	STAGE IIA	STAGE IIB	STAGE III	STAGE IV
EARTH EXCAVATION =	0.00	1.16	2.35	7.57	0.98	41.00	0.00
EMBANKMENT =	0.00	427.06	188.23	33.36	20.74	2.68	0.00
UNS MATL (TOPSOIL EXCAVATION) =	0.00	72.60	31.05	0.00	0.00	0.00	0.00
PGE SUBGRADE =	0.00	0.00	0.00	0.00	0.00	0.00	0.00

290 280 270 260 250 240 230 220 210 200 190 180 170 160 150 140 130 120 110 100 90 80 70 60 50 40 30 20 10 0 10

FILE NAME =	USER NAME = *USER*	DESIGNED - MRK	REVISED -	<b>STATE OF ILLINOIS DEPARTMENT OF TRANSPORTATION</b>	<b>U.S. ROUTE 20 CROSS SECTIONS</b>	SCALE: HORIZ. 1"=10'	VERT. 1"=5'	STA. 107+00.00 TO STA. 107+00.00	F.A. RTE. 345	SECTION BR-R	COUNTY KANE	TOTAL SHEETS 794	SHEET NO. 686
*FILEL*		DRAWN - MRK	REVISED -			CONTRACT NO. 60H45							
		CHECKED - DDH	REVISED -			ILLINOIS FED. AID PROJECT							
		DATE - 12/16/11	REVISED -										