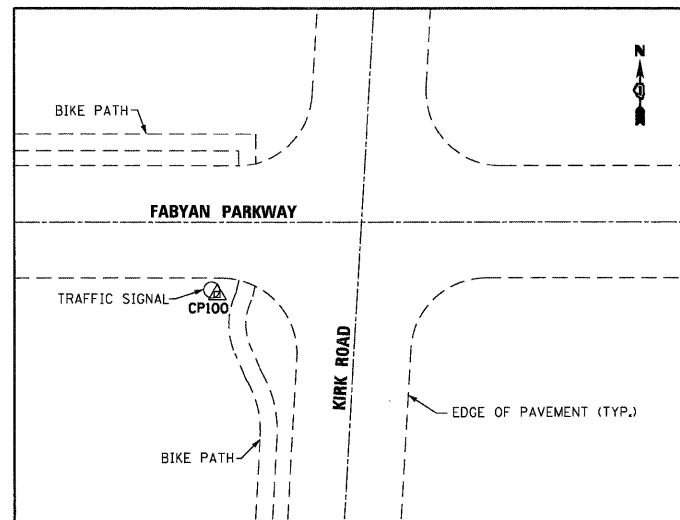


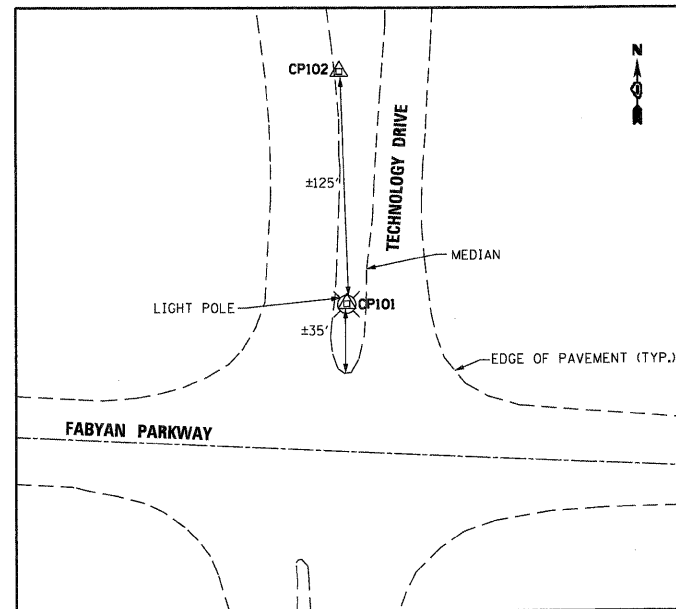
PROP. CURVE PRIL38-5
 PI STA. = 131+34.44
 $\Delta = 19^\circ 01' 30''$ (RT)
 D = 5° 17' 07"
 R = 1,084.05'
 T = 181.65'
 L = 359.96'
 E = 15.11'
 e = 3.9%
 T.R. = 77.00'
 S.E. RUN = 154.00'
 P.C. STA. = 129+52.79
 P.T. STA. = 133+12.75

PROP. CURVE PRIL38-6
 PI STA. = 139+55.42
 $\Delta = 4^\circ 23' 47''$ (RT)
 D = 0° 36' 32"
 R = 9,410.88'
 T = 361.24'
 L = 722.12'
 E = 6.93'
 e = NA
 T.R. = NA
 S.E. RUN = NA
 P.C. STA. = 135+94.18
 P.T. STA. = 143+16.31



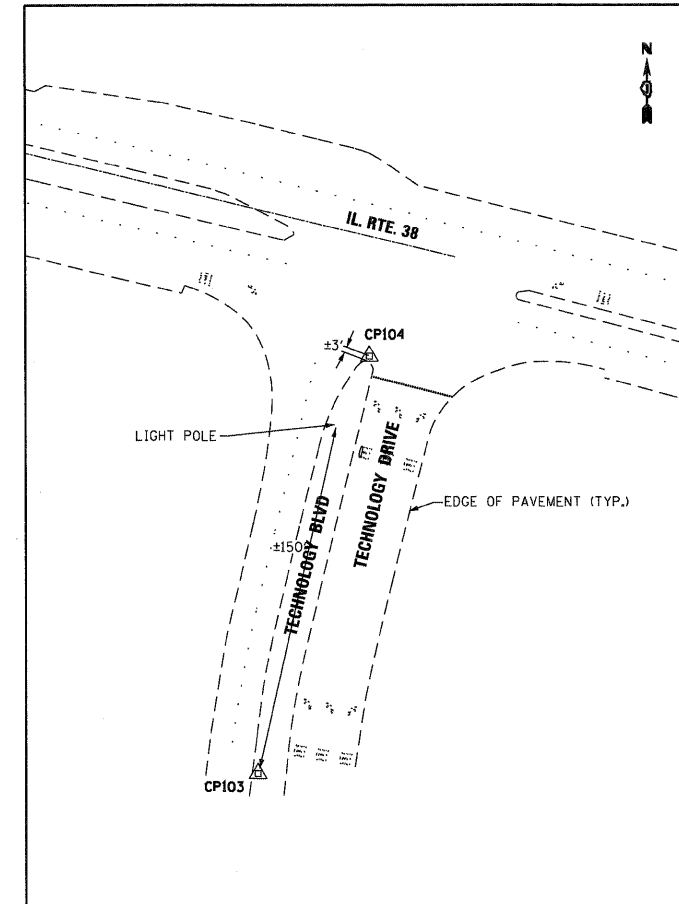
CONTROL POINT #100

1" = 50'-0"



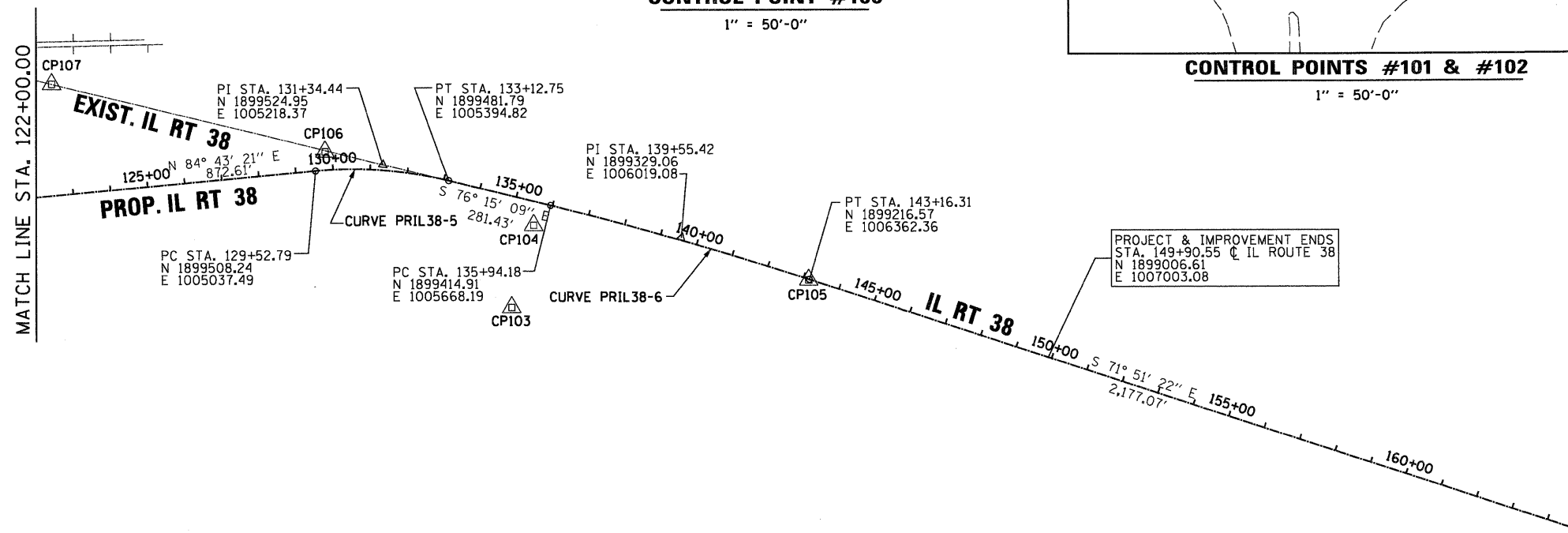
CONTROL POINTS #101 & #102

1" = 50'-0"



CONTROL POINTS #103 & #104

1" = 50'-0"



PROJECT & IMPROVEMENT ENDS
 STA. 149+90.55 @ IL ROUTE 38
 N 1899006.61
 E 1007003.08

△ HORIZONTAL CONTROL					
NO.	NORTHING	EASTING	DESCRIPTION	STATION	OFFSET
CP100	1894786.27	998899.86	FND MON DK3231 AT TRAFFIC SIGNAL	86+28.66	6163.95 R
CP101	1895658.46	1005302.56	FND MON DK3230 AT LIGHT POLE BASE	144+17.21	3711.22 R
CP102	1895782.62	1005298.69	FND BURSEN MON IN MEDIAN	143+74.87	3594.44 R
CP103	1899141.92	1005563.59	FND BURSEN MON IN MEDIAN	135+57.45	290.02 R
CP104	1899361.99	1005622.73	SET MAG NORTH OF MEDIAN NOSE	135+62.60	62.20 R
CP105	1899215.17	1006360.54	FND MAG IN MEDIAN OF IL. RTE. 38	143+15.02	1.90 R
CP106	1899559.75	1005062.99	SET MAG IN MEDIAN OF IL. RTE. 38	129+81.62	49.34 L
CP107	1899742.73	1004329.82	SET MAG IN MEDIAN OF IL. RTE. 38	122+69.69	298.58 L
CP108	1900044.27	1003505.11	SET MAG IN EAST EDGE OF BIKE PATH	1103+84.87	262.81 R
CP109	1900781.21	1003589.33	FND "CARVED CROSS" IN MEDIAN	1110+61.18	51.03 R
CP110	1900106.20	1002865.32	SET MAG IN MEDIAN OF IL. RTE. 38	105+78.67	131.72 L
CP111	1900263.71	1002180.68	SET MAG IN MEDIAN OF IL. RTE. 38	98+99.71	8.46 L
CP112	1900436.35	1001467.91	SET MAG IN MEDIAN OF IL. RTE. 38	91+66.65	0.50 L
CP113	1900660.50	1000781.91	SET MAG IN MEDIAN OF IL. RTE. 38	84+44.69	0.06 R