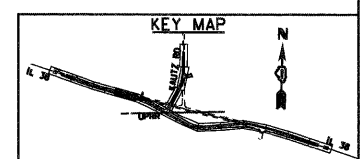
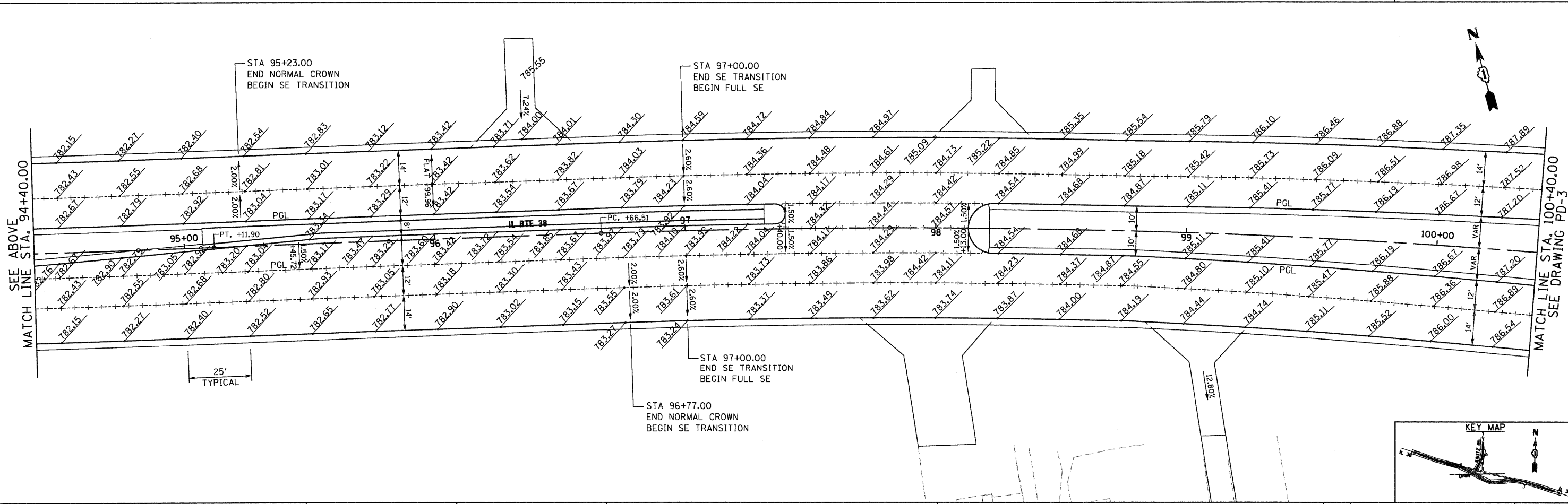
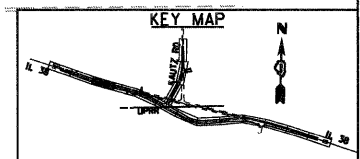
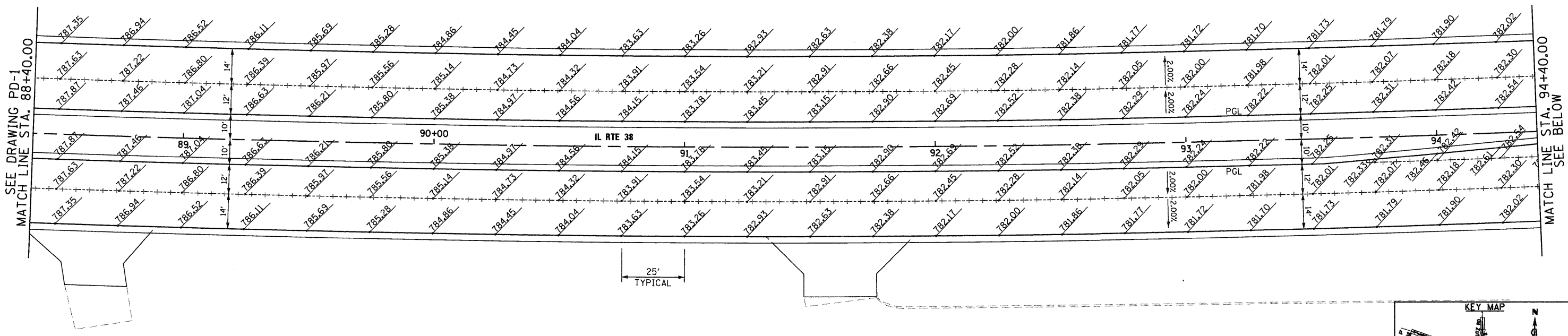


- NOTES
- ELEVATIONS ARE SHOWN AT 25' INTERVALS AND ARE FOR INFORMATION ONLY. THE CONTRACTOR SHALL VERIFY ALL ELEVATIONS PRIOR TO CONSTRUCTION.
 - TRANSVERSE CONTRACTION JOINTS ARE TYPICALLY SPACED AT 15'. REFER TO IDOT STANDARDS 420001, 420101, 420106, 420201 AND 420401 FOR JOINT DETAILS AND SPACING.



McDonough Associates Inc.
Engineers/Architects
130 East Randolph Street Chicago, Illinois 60601

FILE NAME = D:\60122-SHT-PAVEMENT-DETAILS02.dgn	USER NAME = EricG	DESIGNED - JTF	REVISED -	STATE OF ILLINOIS DEPARTMENT OF TRANSPORTATION	IL 38 PAVEMENT DETAILS	F.A.P. RTE. 347	SECTION LY (HB & VB)	COUNTY DUPAGE/KANE	TOTAL SHEETS 421	SHEET NO. 116	
PLOT SCALE = 1:20	CHECKED - EJJ	DATE - 12/09/11	REVISED -			SCALE: 1"=20'	SHEET NO. 2 OF 7 SHEETS	STA. 88+40 TO STA. 100+40	PD-2		CONTRACT NO. 60122
PLOT DATE = 12/9/2011	DATE - 12/09/11	REVISED -	REVISED -			FED. ROAD DIST. NO. 1		ILLINOIS FED. AID PROJECT			