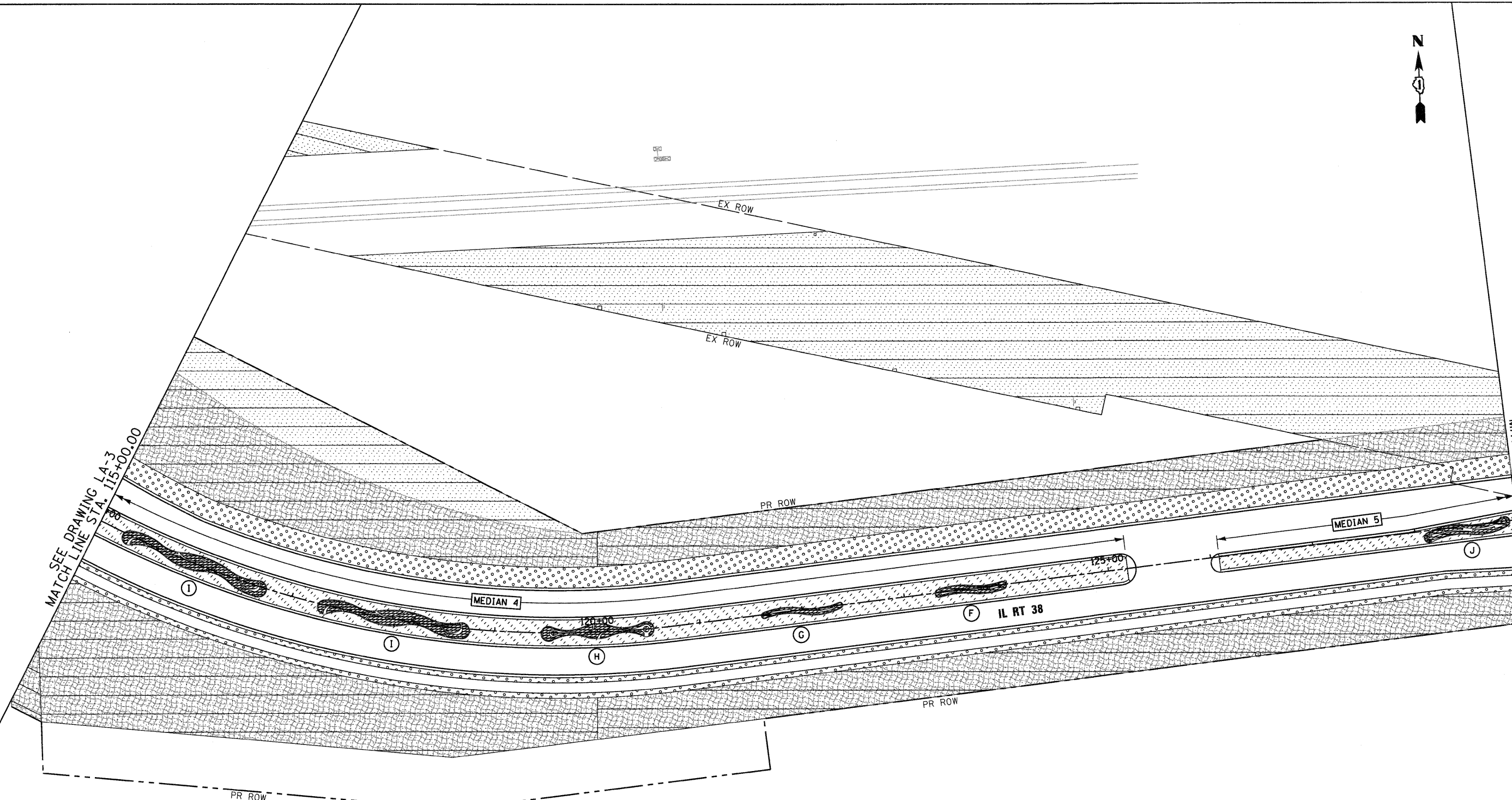
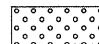
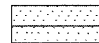
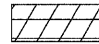

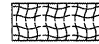





MATCH SEE DRAWING LA-3
MATCH LINE STA. 115+00.00

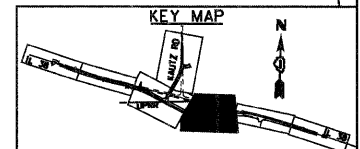
SEE DRAWING LA-5
MATCH LINE STA. 129+00.00



- LEGEND**
-  - SEEDING, CLASS 2A
- TOPSOIL, 4"
 -  - SEEDING, CLASS 4A (MODIFIED)
- TOPSOIL (SEE NOTE)
 -  - SEEDING, CLASS 4B (MODIFIED)
- TOPSOIL (SEE NOTE)
 -  - SODDING, SALT TOLERANT
- COURSE SAND PLACEMENT 2"
- TOPSOIL, 24"
 -  - EROSION CONTROL BLANKET
 -  - MEDIAN PLANTINGS, SEE
LANDSCAPE DETAIL SHEETS

TOPSOIL NOTE:
PROVIDE 18" TOPSOIL AND A 2" SAND LAYER IN CLASS 4A (MODIFIED) AND 4B (MODIFIED) SEEDING AREAS ON EMBANKMENT FORESLOPES FROM STATIONS 100+00 TO 120+00, AND FROM STATION 1100+00 TO 1110+00. IN ALL OTHER LOCATIONS OF CLASS 4 (MODIFIED) AND 4B (MODIFIED) SEEDING, PROVIDE 4" TOPSOIL.

- NOTES:**
1. PLAN VIEW BREAKS BETWEEN SEEDING TYPES ARE APPROXIMATE.
 2. MULCH METHOD 2 SHALL BE USED AT ALL SEEDING LOCATIONS NOT PROTECTED BY EROSION CONTROL BLANKET. HATCHING HAS BEEN OMITTED FOR CLARITY.



McDonough Associates Inc.
 Engineers/Architects
 130 East Randolph Street, Chicago, Illinois 60601

FILE NAME = 0168122-SHT-LNDSKP04.dgn	USER NAME = Eriog	DESIGNED - JTF	REVISED -
PLOT SCALE = 1:50	CHECKED - E.JG	DRAWN - JTF	REVISED -
PLOT DATE = 12/9/2011	DATE - 12/09/11		REVISED -

**STATE OF ILLINOIS
DEPARTMENT OF TRANSPORTATION**

LANDSCAPE PLAN

SCALE: 1"=50' SHEET NO. 3 OF 5 SHEETS STA. 115+00 TO STA. 129+00

F.A.P. RTE. 347	SECTION LY (HB & VB)	COUNTY DUPAGE/KANE	TOTAL SHEETS 421	SHEET NO. 134
LA-4		CONTRACT NO. 60122		
FED. ROAD DIST. NO. 1 ILLINOIS FED. AID PROJECT				