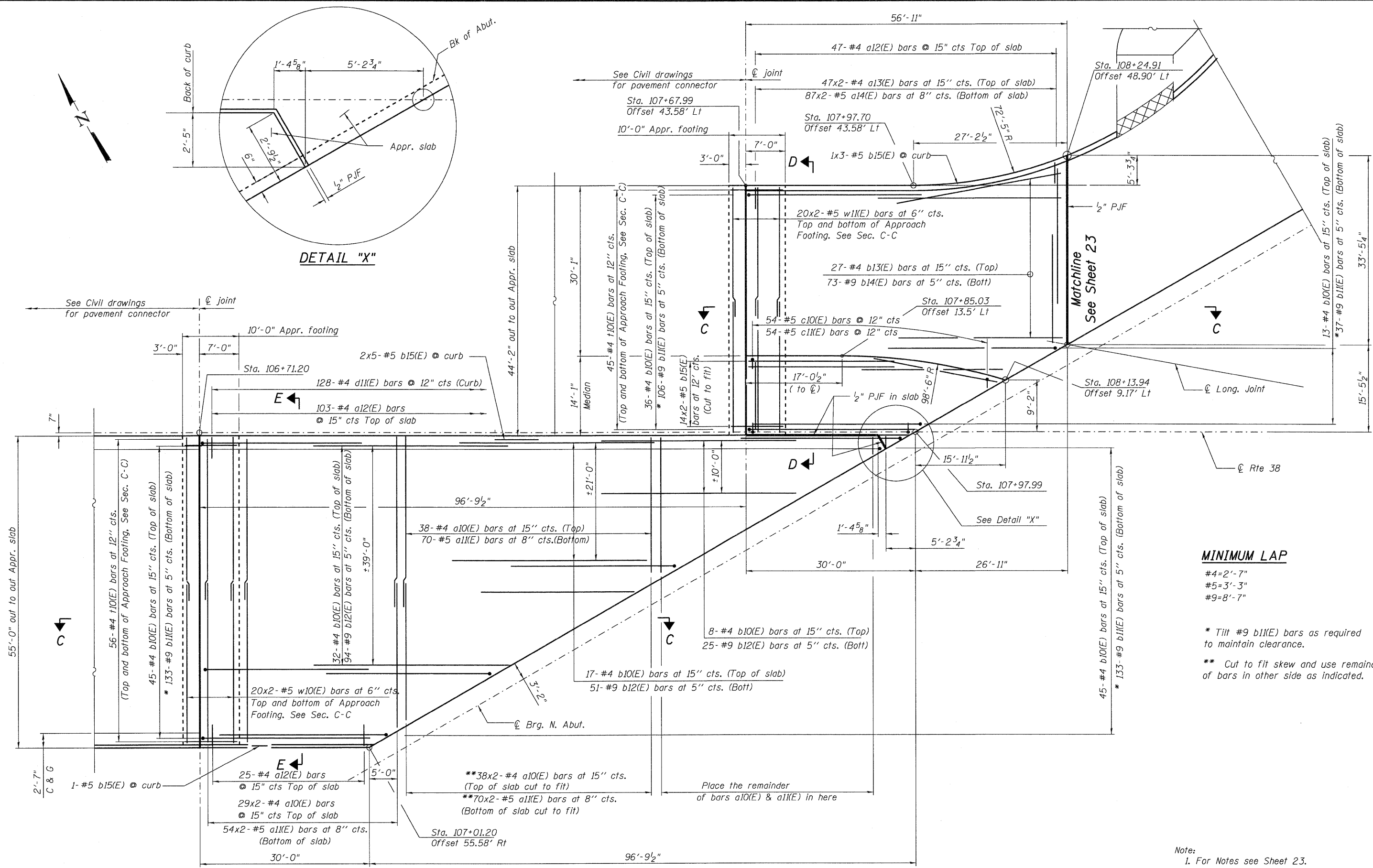


DETAIL "X"



MINIMUM LAP

- #4=2'-7"
- #5=3'-3"
- #9=8'-7"

* Tilt #9 b11(E) bars as required to maintain clearance.

** Cut to fit skew and use remainder of bars in other side as indicated.

- Note:
1. For Notes see Sheet 23.
 2. For Sections C-C, D-D E-E see Sheet 24.

PLAN - NORTH APPROACH SLAB-NW

McDonough Associates Inc.
 Engineers / Architects
 130 East Randolph Street, Chicago, Illinois 60601

FILE NAME = 04502079-60122-022-Appr_Slab_Nl.dgn	USER NAME = jehrhert	DESIGNED - RJ	REVISD -	STATE OF ILLINOIS DEPARTMENT OF TRANSPORTATION	NORTH APPROACH SLAB - 1 STRUCTURE NO. 045-0079 SHEET NO. 22 OF 67 SHEETS	F.A.P. RTE. 347	SECTION LY (HB & VB)	COUNTY DUPAGE/KANE	TOTAL SHEETS 421	SHEET NO. 188
PLOT SCALE = 1:8	DRAWN - RJ	REVISD -	CONTRACT NO. 60122							
PLOT DATE = 3/28/2012	CHECKED - GEK	REVISD -	ILLINOIS FED. AID PROJECT							