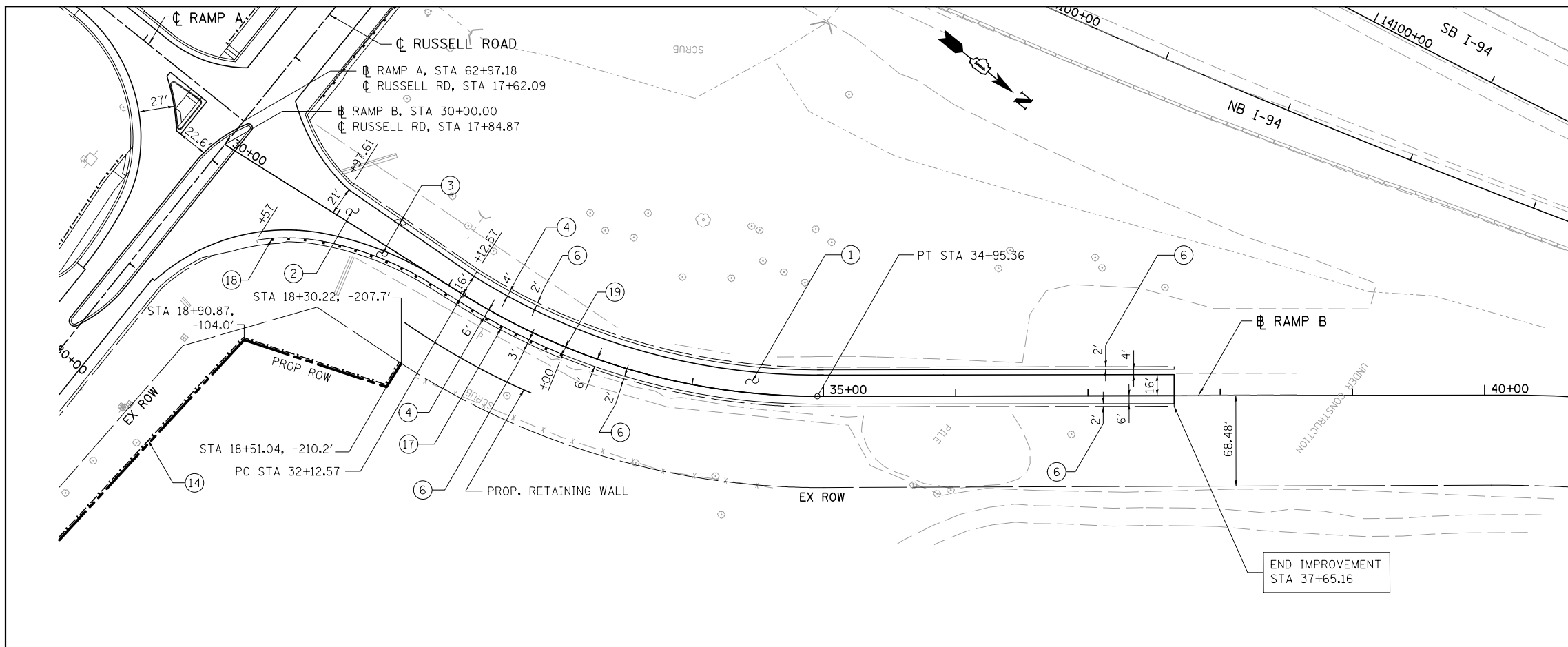
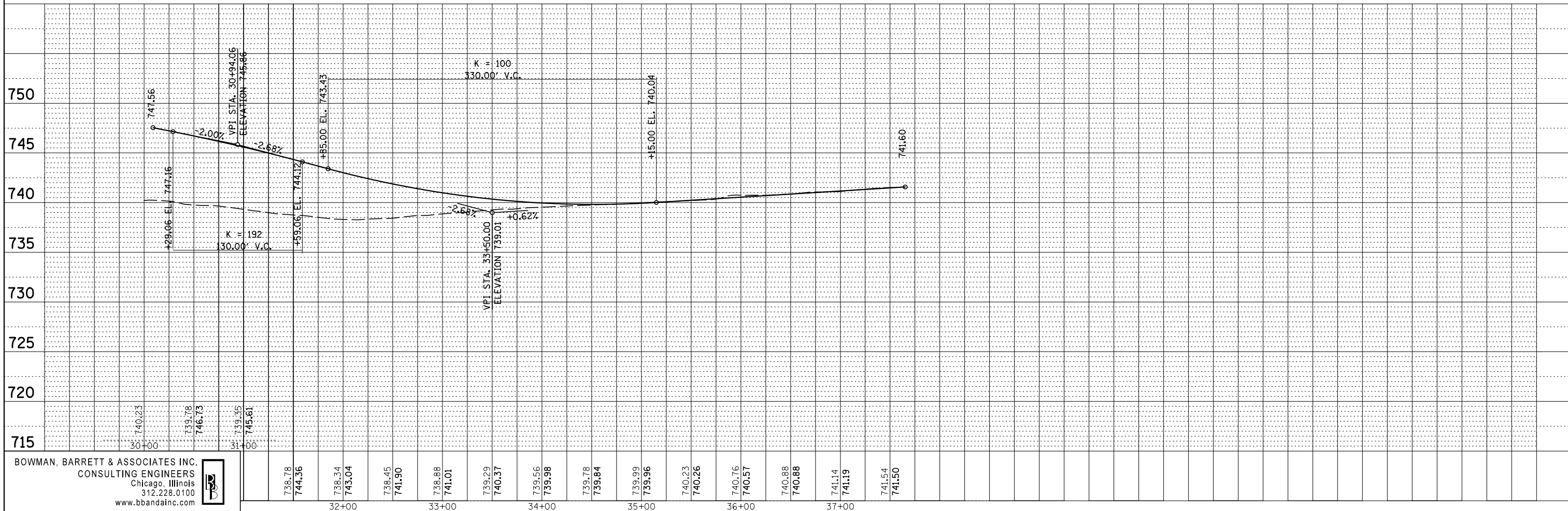


PLAN	SURVEYED	BY	DATE
	PLOTTED		
	GRADES CHECKED		
	STRUCTURE NOTATIONS CHECKED		
	NOTE BOOK NO.		
	CADD FILE NAME		

PROFILE	SURVEYED	BY	DATE
	PLOTTED		
	GRADES CHECKED		
	STRUCTURE NOTATIONS CHECKED		
	NOTE BOOK NO.		
	CADD FILE NAME		



- LEGEND**
- ① PORTLAND CEMENT CONCRETE PAVEMENT, 12" (JOINTED)
 - ② PORTLAND CEMENT CONCRETE PAVEMENT, 11" (JOINTED)
 - ③ PORTLAND CEMENT CONCRETE SHOULDERS, 11"
 - ④ PORTLAND CEMENT CONCRETE SHOULDERS, 12"
 - ⑤ HOT-MIX ASPHALT PAVEMENT (FULL DEPTH), 9"
 - ⑥ AGGREGATE SHOULDERS, TYPE B 6"
 - ⑦ COMBINATION CONCRETE CURB & GUTTER, TYPE B-6.24
 - ⑧ COMBINATION CONCRETE CURB & GUTTER, TYPE B-6.12
 - ⑨ P.C.C. DRIVEWAY PAVEMENT, 8"
 - ⑩ STAMPED COLORED P.C.C. MEDIAN SURFACE 13 INCH (SPECIAL)
 - ⑪ CONCRETE MEDIAN, TYPE SM (SPECIAL)
 - ⑫ STAMPED COLORED P.C.C. MEDIAN SURFACE 6 INCH (SPECIAL)
 - ⑬ HOT MIX ASPHALT SURFACE COURSE MIX "D", N50 (3")
 - ⑭ CHAIN LINK FENCE, 4'
 - ⑮ HMA STABILIZATION 6" AT STEEL PLATE BEAM GUARD RAIL
 - ⑯ HOT MIX ASPHALT BASE COURSE, 6"
HOT MIX ASPHALT SURFACE COURSE, MIX "D", N50, (3")
 - ⑰ STEEL PLATE BEAM GUARDRAIL, TYPE A, 6' POSTS
 - ⑱ TRAFFIC BARRIER TERMINAL, TYPE 1 (SPECIAL) TANGENT
 - ⑲ TRAFFIC BARRIER TERMINAL, TYPE 2
 - ⑳ TRAFFIC BARRIER TERMINAL, TYPE 5
 - ㉑ TRAFFIC BARRIER TERMINAL, TYPE 6
 - ⑳ CONCRETE CURB, TYPE B



BOWMAN, BARRETT & ASSOCIATES INC.
 CONSULTING ENGINEERS
 Chicago, Illinois
 312.228.0100
 www.bbandainc.com

738.78	738.34	738.45	738.88	739.29	739.56	739.78	739.99	740.23	740.76	740.88	741.14	741.54
744.36	743.04	741.90	741.01	740.37	739.98	739.84	739.96	740.26	740.57	740.88	741.19	741.50
32+00	33+00	34+00	35+00	36+00	37+00							

FILE NAME = #FILES*

USER NAME = default	DESIGNED - JDC	REVISED -
	DRAWN - JDC	REVISED -
PLOT SCALE = #SCALE*	CHECKED - RGR	REVISED -
PLOT DATE = 2/10/2012	DATE - 01/25/2012	REVISED -

STATE OF ILLINOIS
DEPARTMENT OF TRANSPORTATION

PROPOSED RAMP B PLAN AND PROFILE
 SCALE: 1"=50' SHEET NO. 5 OF 7 SHEETS STA. 30+00.00 TO STA. 37+65.16

F.A. RTE.	SECTION	COUNTY	TOTAL SHEETS	SHEET NO.
94	49-1(HB & HB-1R)	LAKE	225	21
CONTRACT NO. 60L76			ILLINOIS FED. AID PROJECT	

S:\1101\05_CADD\60L76_Russell\Drawings\60L76-shr-01.dwg