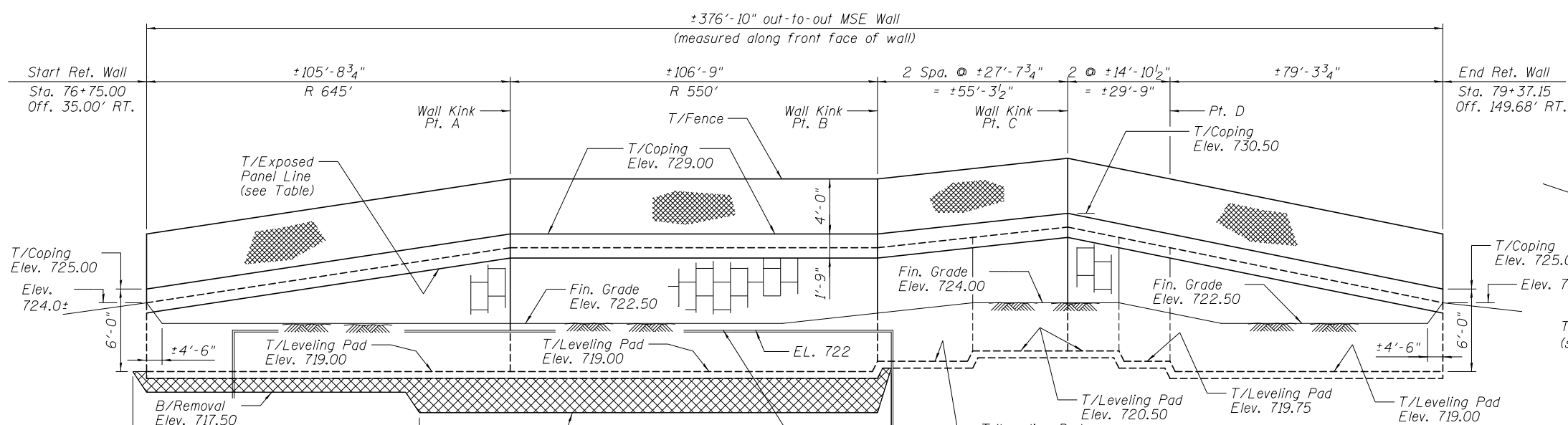


1/27/2012 3:50:30 PM

S:\1101\05_CADD\60176_RussellRdwy\60176_Sheets\60176-001-MSEW.dgn



Point	Sta.	Offset	Elev.
Start	76+75.00	35.00' RT.	723.25
A	77+75.00	35.00' RT.	727.25
B	78+75.00	43.00' RT.	727.25
C	79+25.00	41.00' RT.	728.75
D	79+30.50	70.64' RT.	727.25
End	79+37.15	149.68' RT.	723.25

MSE WALL ELEVATION

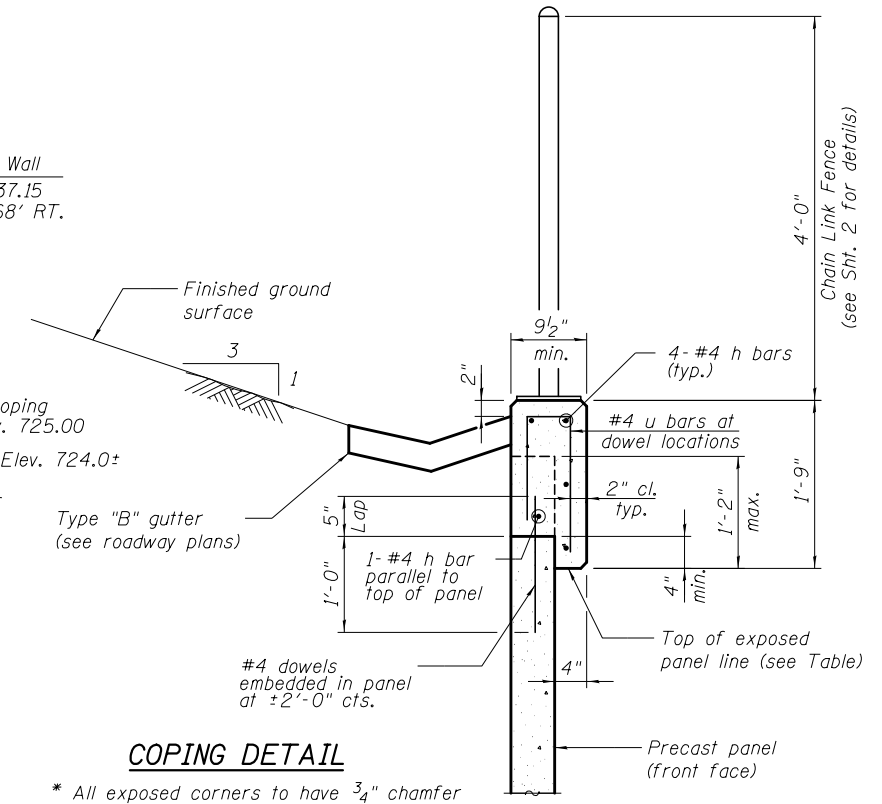
(Looking along front face of wall)
Scale: 1"=20' (H)
1"=5' (V)

* Panels shall not have rustication surface finish

**Temporary Soil Retention System

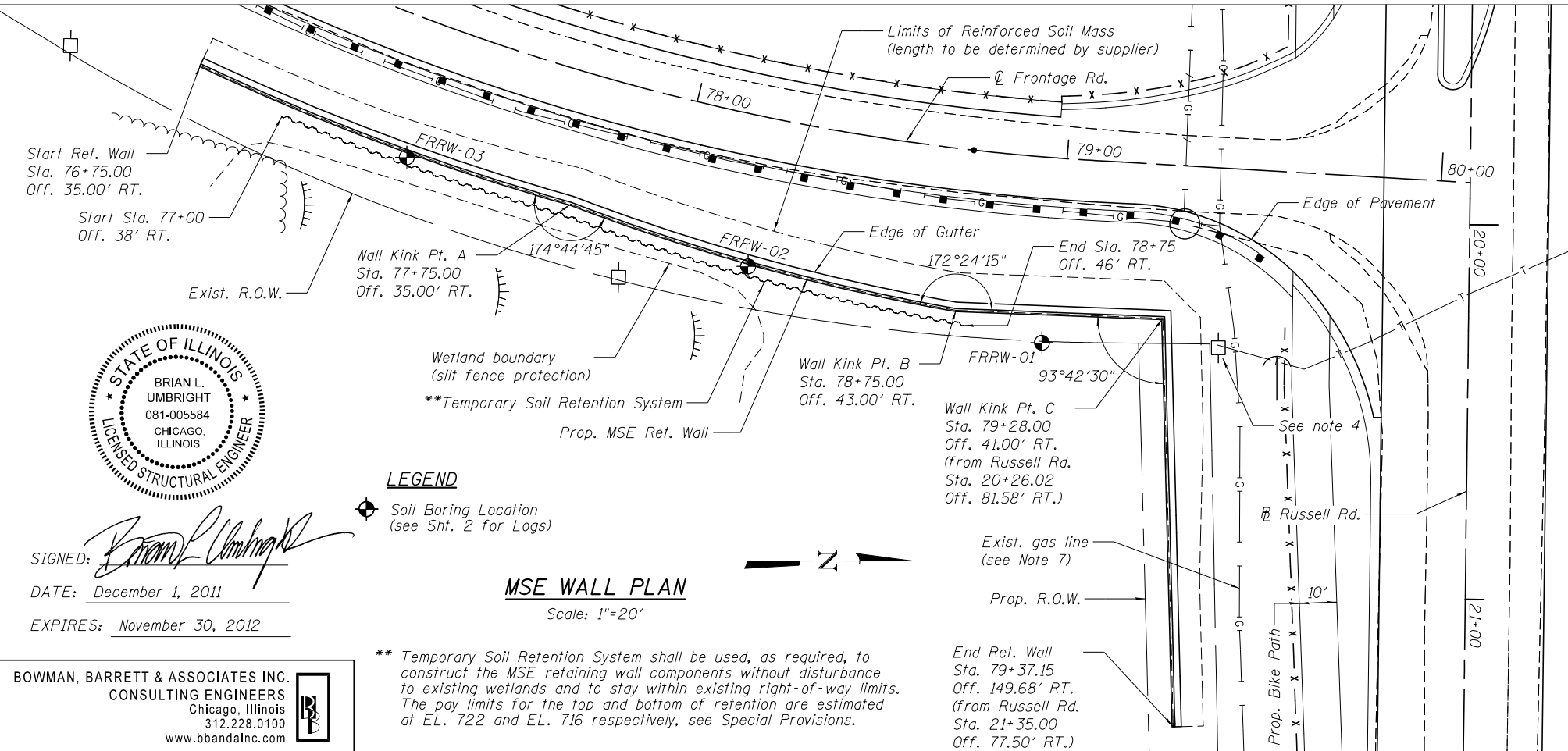
BILL OF MATERIAL

Item	Unit	Quantity
Mechanically Stabilized Earth Retaining Wall	Sq. Ft.	2,710
Structure Excavation	Cu. Yd.	680
Removal and Disposal of Unsuitable Materials	Cu. Yd.	300
Chain Link Fence, 4'	Foot	377
Concrete Gutter, Type B	Foot	377
Temporary Soil Retention System	Sq. Ft.	1,140



COPING DETAIL

* All exposed corners to have 3/4" chamfer



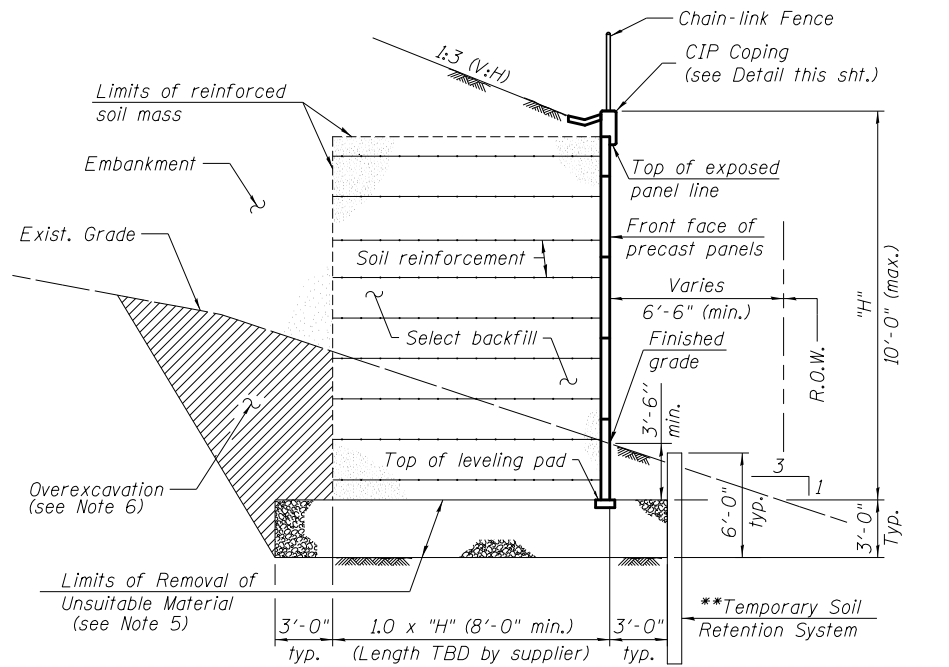
MSE WALL PLAN

Scale: 1"=20'

LEGEND

Soil Boring Location (see Sht. 2 for Logs)

** Temporary Soil Retention System shall be used, as required, to construct the MSE retaining wall components without disturbance to existing wetlands and to stay within existing right-of-way limits. The pay limits for the top and bottom of retention are estimated at EL. 722 and EL. 716 respectively, see Special Provisions.



SECTION THRU MSE WALL

NOTES:

- Stations and Offsets are measured from ϕ of Frontage Rd. to front face of MSE wall panel.
- MSE Wall supplier shall be responsible for design of precast wall panels & soil reinforcement.
- Allowable Soil Bearing Capacity for the MSE Wall = 2.0 Ksf.
- Utility pole to be relocated (by others), see Special Provisions.
- Backfill with select fill used in MSE Wall (cost included with MSE Retaining Wall).
- Overexcavation beyond the limits of structure excavation. This area not measured for payment. Backfill overexcavation with same material as used for select fill.
- Contractor to use caution around and not damage existing gas lines when excavating for and installing the reinforced soil mass at the north end of the wall.



SIGNED: *Brian L. Umbright*
DATE: December 1, 2011
EXPIRES: November 30, 2012

BOWMAN, BARRETT & ASSOCIATES INC.
CONSULTING ENGINEERS
Chicago, Illinois
312.228.0100
www.bbainc.com

USER NAME	DESIGNED	REVISIONS
RTA	RTA	-
B&U	B&U	-
RTA	RTA	-
B&U	B&U	-

**STATE OF ILLINOIS
DEPARTMENT OF TRANSPORTATION**

**MSE WALL - PLAN & ELEVATION
STRUCTURE NO. 049-W043**

F.A.U. RTE.	SECTION	COUNTY	TOTAL SHEETS	SHEET NO.
1199	49-1(HB & HB-1R)	LAKE	225	113

CONTRACT NO. 60L76

SHEET NO. 1 OF 2 SHEETS

ILLINOIS FED. AID PROJECT