

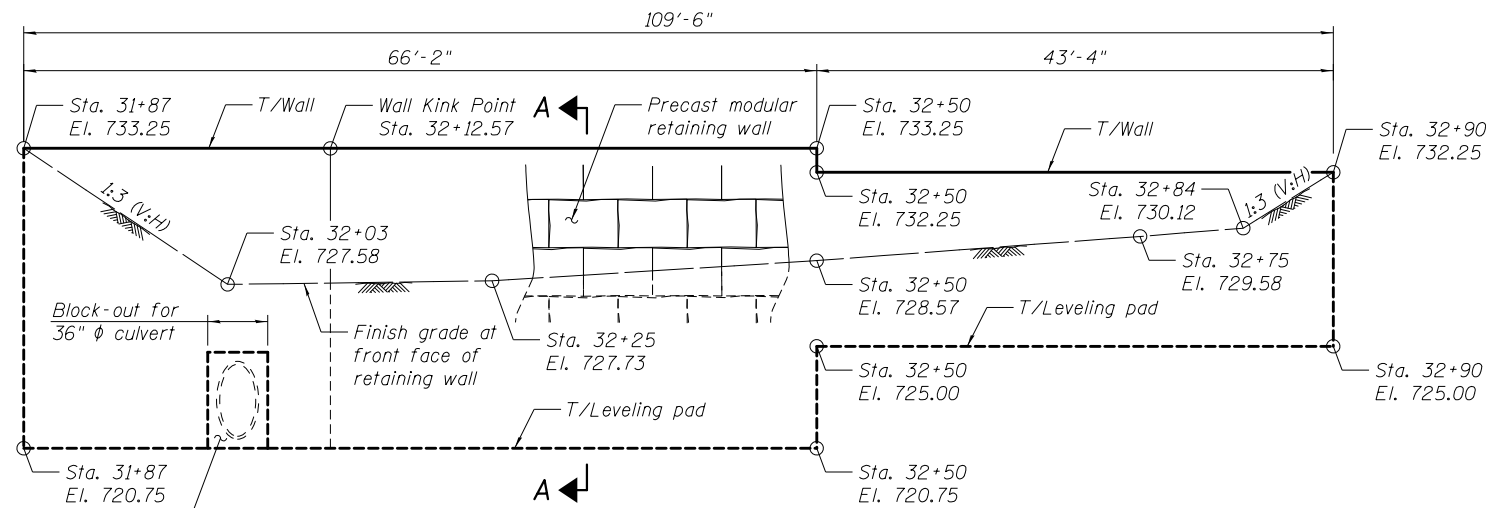
SIGNED: *Brian L. Umbright*
 DATE: January 12, 2012
 EXPIRES: November 30, 2012

NOTES

1. Precast Modular Retaining Wall shall be an IDOT approved system. See special provision.
2. The aesthetic surface and color of the precast modular retaining wall shall be approved by IDOT prior to ordering materials or starting construction.
3. A rodent shield shall be provided for all pipe underdrains outleting to daylight, if pipe underdrain is required per manufacturer requirements. Cost of rodent shield and pipe underdrain shall be included with Precast Modular Retaining Wall.

BILL OF MATERIAL

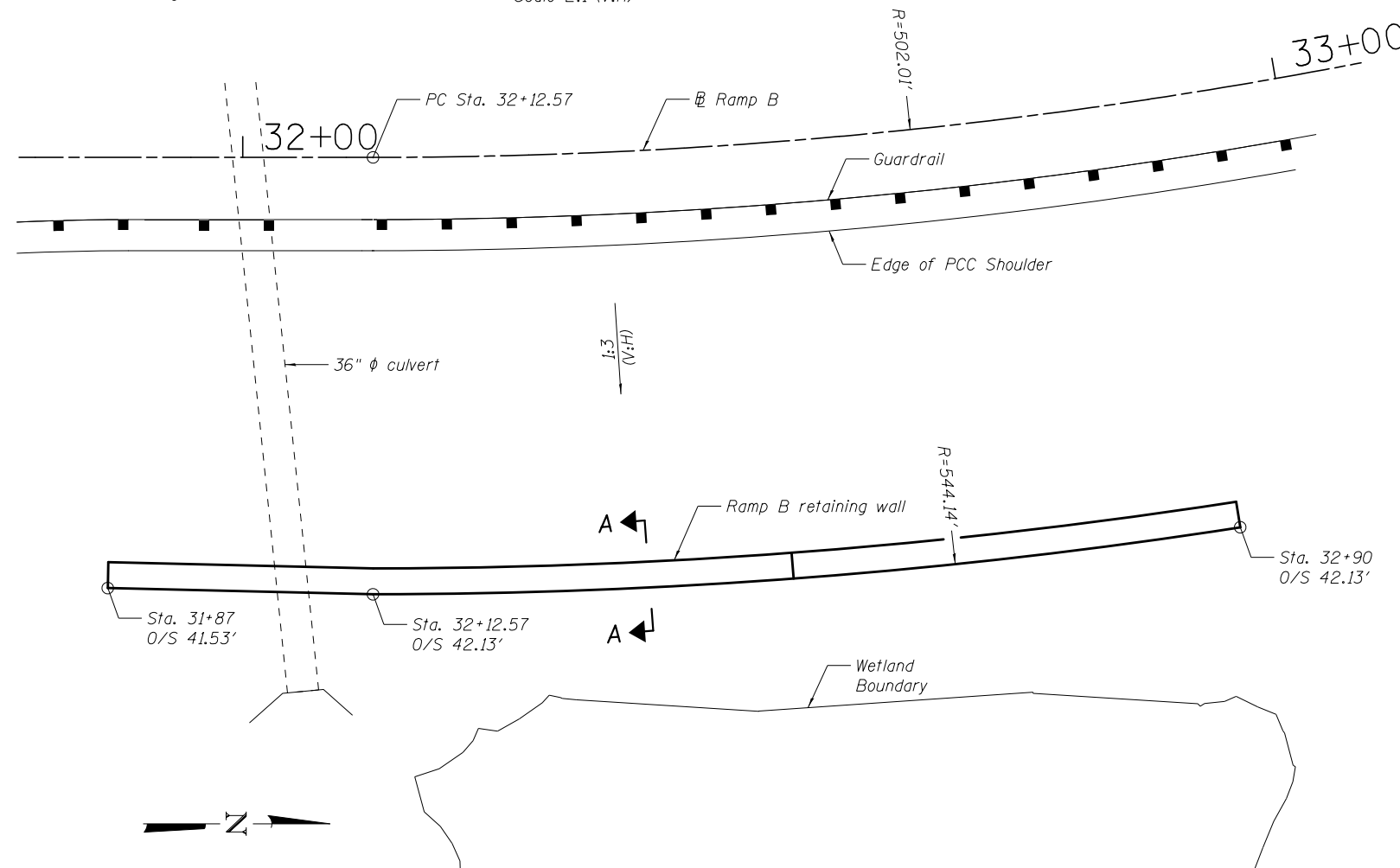
Item	Unit	Quantity
Precast Modular Retaining Wall	Sq. Ft.	1,142
Structure Excavation	Cu. Yd.	284



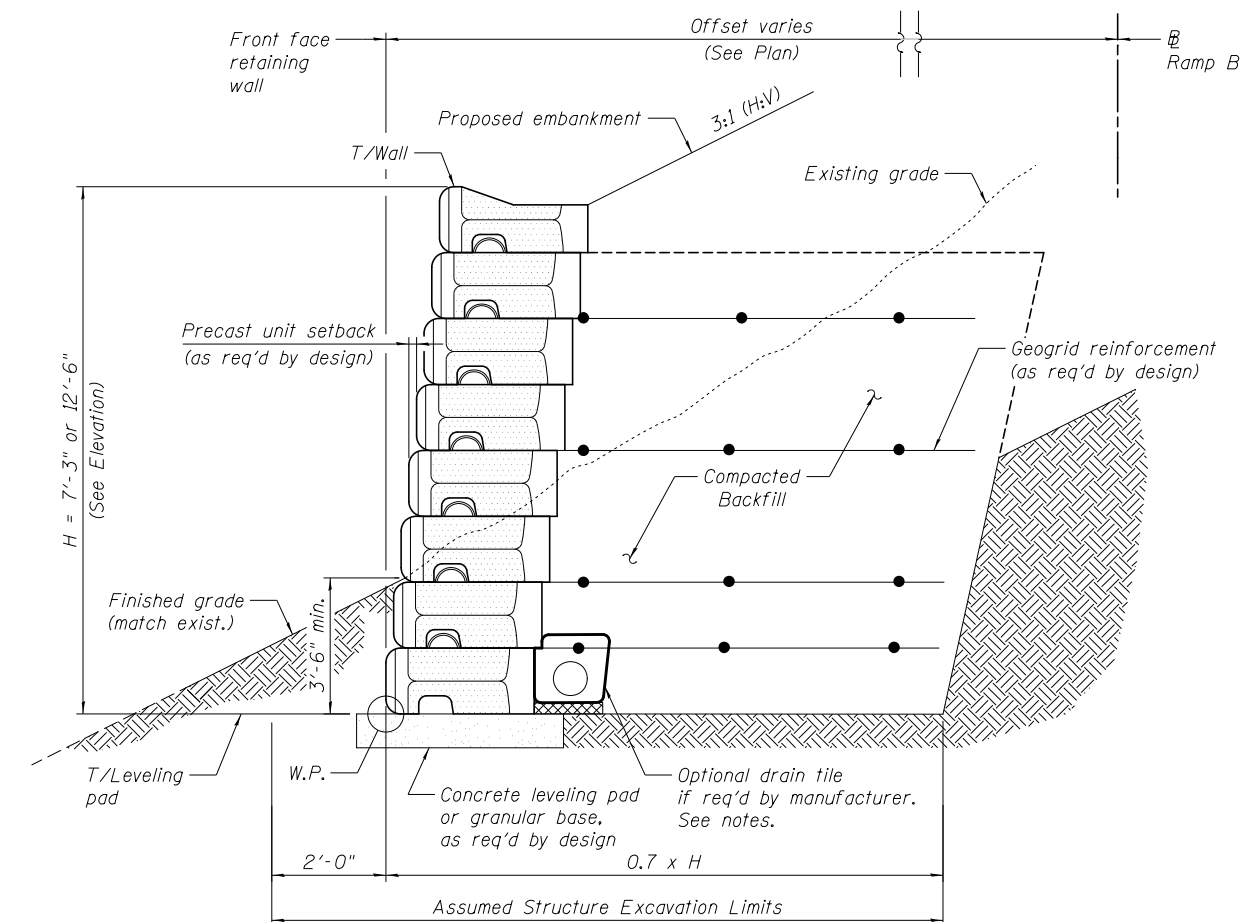
RAMP B RETAINING WALL ELEVATION

(Looking West)
 Scale 2:1 (V:H)

Fill space between culvert and precast units with cast-in-place concrete collar. Cost included with Precast Modular Retaining Wall.



RAMP B RETAINING WALL PLAN



SECTION A-A

1/27/2012 3:50:33 PM S:\1101\05_CADD\60L76_RussellRdwy\60L76_Sheets\60L76-002a-RampBRetWall.dgn

BOWMAN, BARRETT & ASSOCIATES INC.
 CONSULTING ENGINEERS
 Chicago, Illinois
 312.228.0100
 www.bbandainc.com

FILE NAME =	USER NAME =	DESIGNED - MRM	REVISIONS
		CHECKED - B&U	REVISIONS
		DRAWN - LAM	REVISIONS
		CHECKED - MRM	REVISIONS

STATE OF ILLINOIS
 DEPARTMENT OF TRANSPORTATION

RAMP B RETAINING WALL (SN 049-W044)
 PLAN, ELEVATION, & DETAILS

F.A.U. RTE.	SECTION	COUNTY	TOTAL SHEETS	SHEET NO.
1199	49-1(HB & HB-1R)	LAKE	225	114A
CONTRACT NO. 60L76				

SHEET NO. 2A OF 2 SHEETS

ILLINOIS FED. AID PROJECT