

**GENERAL NOTES**

Fasteners shall be AASHTO M164 Type 1, Mechanically Galvanized bolts. Bolts 3/4" φ, holes 5/16" φ, unless otherwise noted.

Calculated weight of Structural Steel =

AASHTO M 270 Grade 36 = 26,580 lb.  
AASHTO M 270 Grade 50 = 318,150 lb.

No field welding is permitted except as specified in the contract documents.

Reinforcement bars shall conform to the requirements of ASTM A 706 Gr 60.

Reinforcement bars designated (E) shall be epoxy coated.

Concrete Sealer shall be applied to all exposed surfaces of the abutment backwalls, bridge seats, and pile caps.

The Organic Zinc Rich Primer/Epoxy/Urethane Paint System shall be used for painting of new structural steel except where otherwise noted. The entire system shall be shop-applied, with the exception of the exterior surfaces and bottom of the bottom flange of the fascia beams, masked-off connection surfaces, and field-installed fasteners, all of which shall be touched-up and finish-coated in the field. The color of the final finish coat for all interior steel surfaces shall be Gray, Munsell No. 5B 7/1. The color of the final finish coat for the exterior and bottom flange of the fascia beams shall be Reddish-Brown, Munsell No. 2.5YR 3/4. See Standard Specification 506.

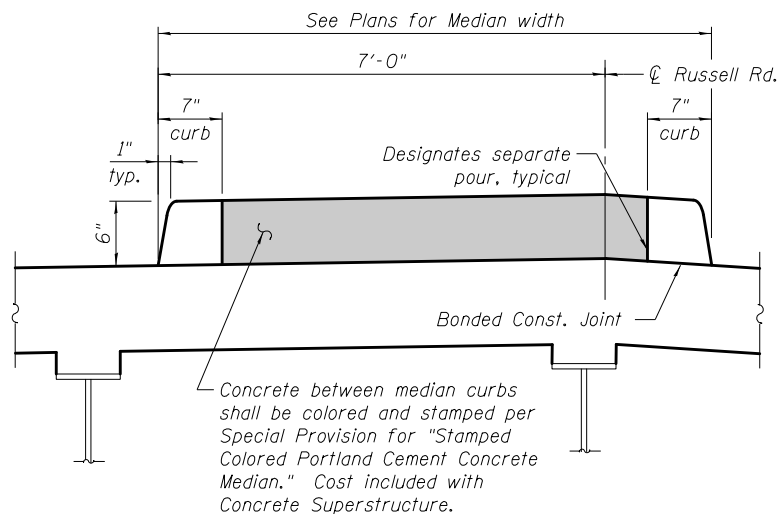
**INDEX OF SHEETS**

- S-1 General Plan & Elevation
- S-2 General Data
- S-3 Construction Staging & Details
- S-4 Top of Slab Elevations I
- S-5 Top of Slab Elevations II
- S-6 Top of Slab Elevations III
- S-7 Top of Slab Elevations IV
- S-8 Top of West Approach Slab Elevations
- S-9 Top of East Approach Slab Elevations
- S-10 Superstructure Plan & Cross Section
- S-11 Superstructure Details I
- S-12 Superstructure Details II
- S-13 Bridge Approach Slab Plans
- S-14 Bridge Approach Slab Details I
- S-15 Bridge Approach Slab Details II
- S-16 Bridge Fence Railing, Sidewalk Mounted
- S-17 Preformed Joint Strip Seal
- S-18 Drainage Scupper, DS-12M10
- S-19 Framing Plan
- S-20 Beam Details
- S-21 Bearing Details
- S-22 MSE Walls, West Abutment
- S-23 MSE Walls, East Abutment
- S-24 MSE Wall Details
- S-25 West Abutment
- S-26 East Abutment
- S-27 Abutment Details
- S-28 Metal Shell Pile Details
- S-29 Bar Splicer Assembly and Mechanical Splicer Details
- S-30 Soil Boring Logs I
- S-31 Soil Boring Logs II
- S-32 Soil Boring Logs III
- S-33 Soil Boring Logs IV

**TOTAL BILL OF MATERIAL**

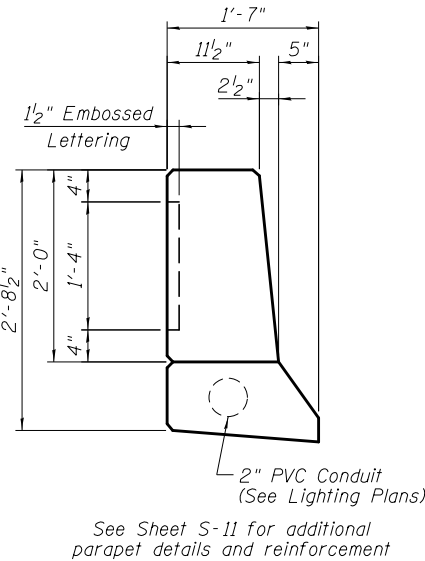
ITEM	UNIT	SUPER	SUB	TOTAL
Removal of Existing Structures No. 1	Each	1	-	1
Protective Shield	Sq. Yd.	288	-	288
Structure Excavation	Cu. Yd.	-	2,159	2,159
Concrete Structures	Cu. Yd.	68.1	198.3	266.4
Bridge Deck (Shrinkage Reducing Admixture)	Cu. Yd.	265.9	-	265.9
Concrete Superstructure	Cu. Yd.	425.3	-	425.3
Bridge Deck Grooving	Sq. Yd.	1,147	-	1,147
Protective Coat	Sq. Yd.	1,943	-	1,943
* Erecting Structural Steel	L. Sum	0.45	-	0.45
Stud Shear Connectors	Each	2,376	-	2,376
Reinforcement Bars, Epoxy Coated	Pound	166,530	15,960	182,490
Bar Splicers	Each	-	172	172
Bridge Fence Railing (Sidewalk)	Foot	189	-	189
Parapet Railing	Foot	186	-	186
Furnishing Metal Shell Piles 12" x 0.250"	Foot	-	2,489	2,489
Driving Piles	Foot	-	2,489	2,489
Test Pile Metal Shells	Each	-	2	2
Pile Shoes	Each	-	44	44
Name Plates	Each	1	-	1
Preformed Joint Strip Seal	Foot	174	-	174
* Erecting Elastomeric Bearing Assembly, Type I	Each	11	-	11
Anchor Bolts, 1"	Each	44	-	44
Concrete Sealer	Sq. Ft.	-	1,528	1,528
Drainage Scuppers, DS-12M10	Each	6	-	6
Mechanically Stabilized Earth Retaining Wall	Sq. Ft.	-	9,009	9,009
Bituminous Coated Aggregate Slope wall 6"	Sq. Yd.	-	539	539

\*Note that these items are being furnished through a separate fabrication contract.

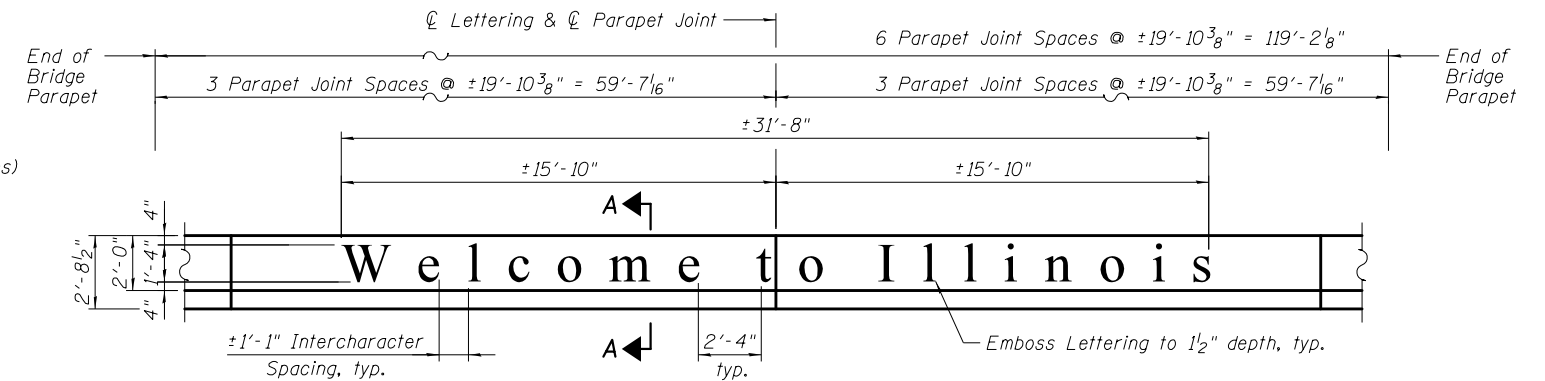


**STAMPED CONCRETE MEDIAN DETAIL**  
(Looking East)

Notes:  
- Bridge section shown, approach section similar  
- Reinforcement omitted for clarity (see Plans)

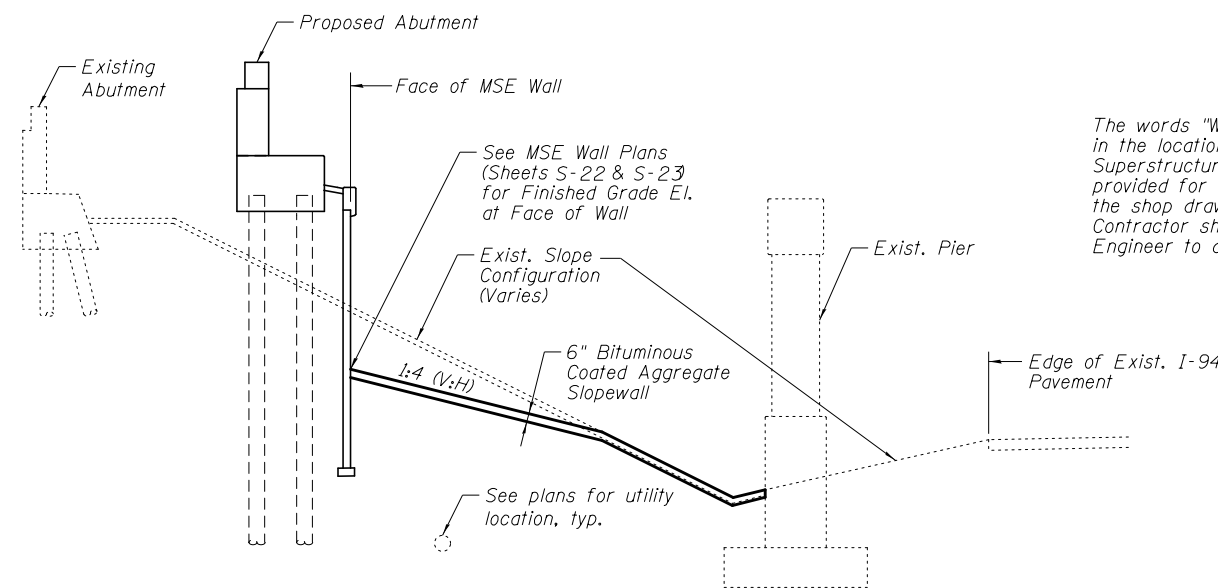


**SECTION A-A**  
(Looking East)

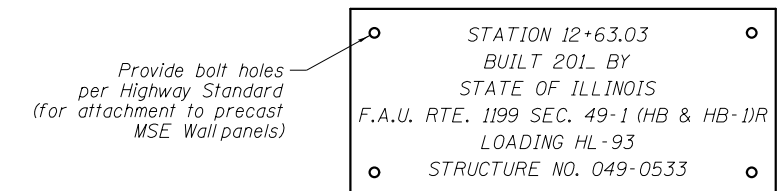


**EMBOSS LETTERING DETAIL**  
(Outside Face of North Parapet over SB I-94)

The words "Welcome to Illinois" shall be embossed in the concrete parapets in the location and letter style shown in this detail. Cost included in "Concrete Superstructure". Layout dimensions and intercharacter spacing has been provided for guidance. The Contractor shall provide a lettering layout with the shop drawing submittal for review and approval by the Engineer. The Contractor shall coordinate any adjustments to location and spacing with the Engineer to avoid parapet joints. See Special Provision for "Parapet Lettering".



**SLOPEWALL DETAILS**



**NAME PLATE**  
See Std. 515001

BOWMAN, BARRETT & ASSOCIATES INC.  
CONSULTING ENGINEERS  
Chicago, Illinois  
312.228.0100  
www.bbainc.com

3/7/2012 4:21:04 PM S:\1101\05\_CADD\60L76\_RussellRdwy\60L76\_Sheets\0490533-60L76-002-CD.dgn

FILE NAME =	USER NAME =	DESIGNED - MRM	REVISIONS	STATE OF ILLINOIS DEPARTMENT OF TRANSPORTATION	GENERAL DATA STRUCTURE NO. 049-0533	F.A.U. RTE.	SECTION	COUNTY	TOTAL SHEETS	SHEET NO.	
		CHECKED - TL	REVISIONS			1199	49-1(HB & HB-1)R	LAKE	225	116	
		PLOT SCALE = N.T.S.	REVISIONS			CONTRACT NO. 60L76					
		PLOT DATE = 3/7/2012	REVISIONS			ILLINOIS FED. AID PROJECT					