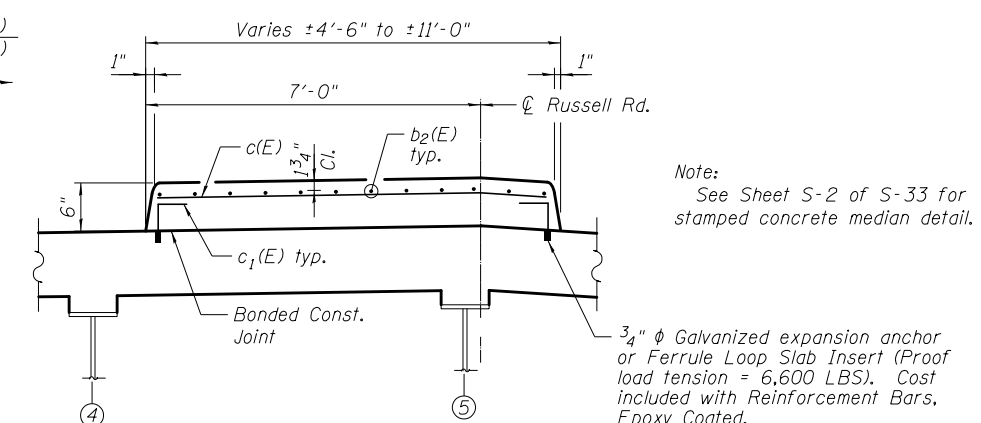
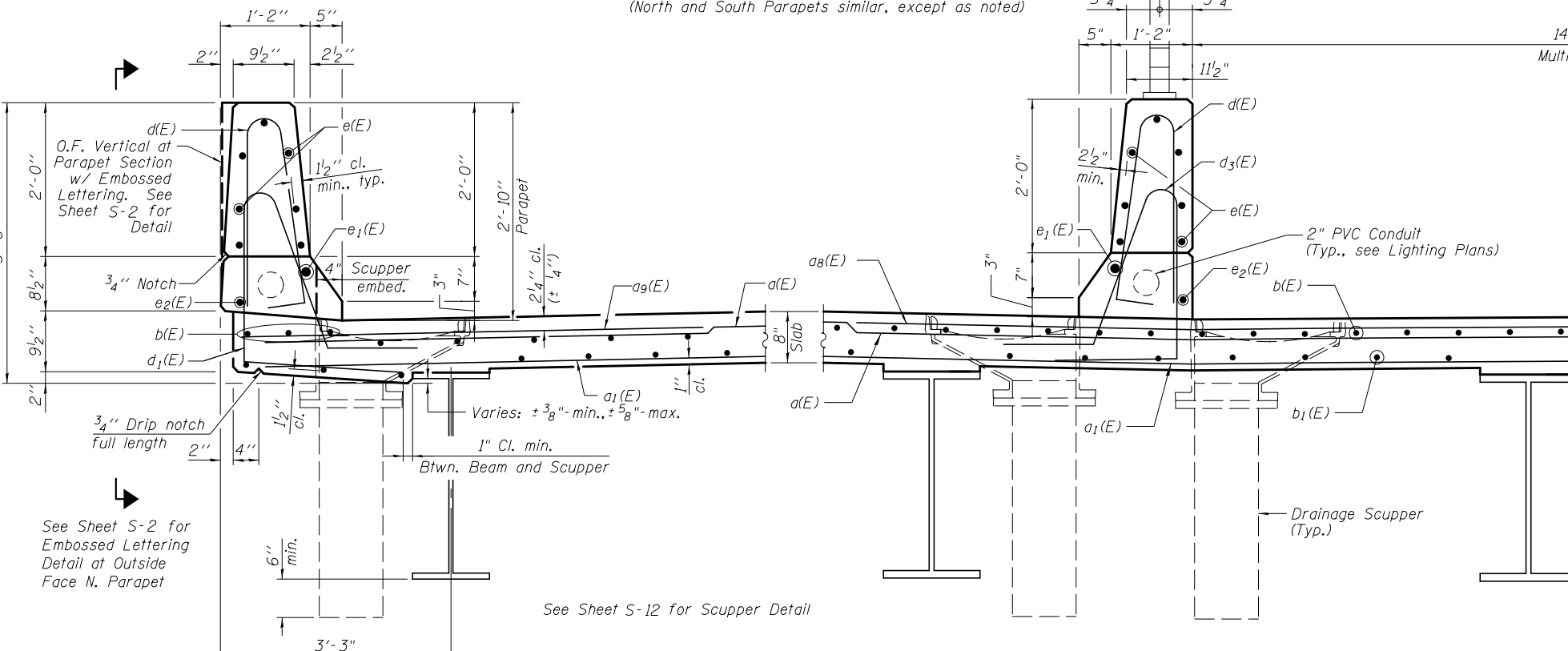


INSIDE ELEVATION OF PARAPET
(North and South Parapets similar, except as noted)

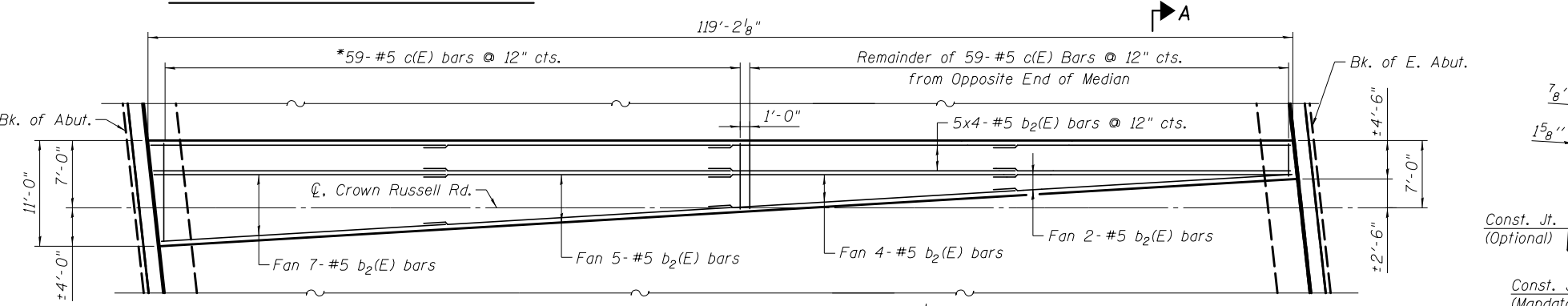


SECTION A-A
(Deck reinforcement omitted for clarity)

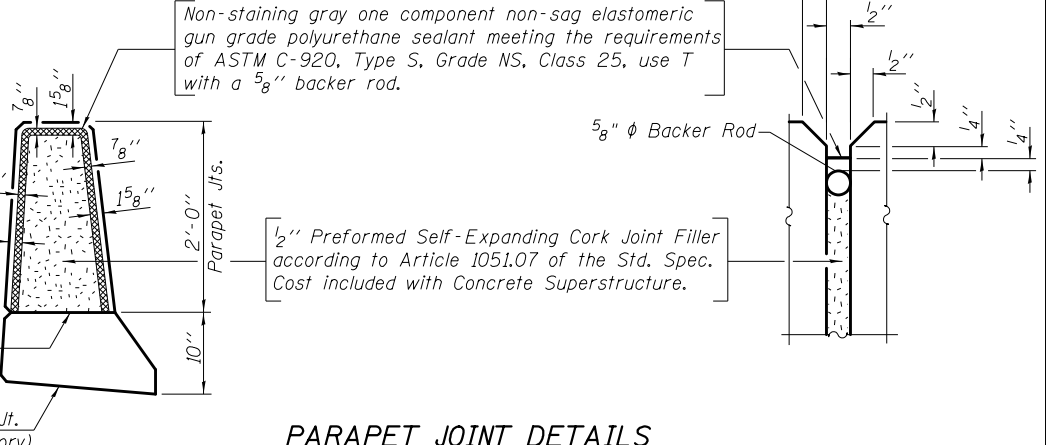


SECTION THRU SOUTH PARAPET

SECTION THRU NORTH PARAPET



MEDIAN PLAN



PARAPET JOINT DETAILS

BOWMAN, BARRETT & ASSOCIATES INC.
CONSULTING ENGINEERS
Chicago, Illinois
312.228.0100
www.bbandainc.com

*Cut bars according to diagram on Sheet S-12 and use remainder on opposite end of median.

Notes:
Drainage scuppers shall be located clear of all diaphragms.

STATE OF ILLINOIS
DEPARTMENT OF TRANSPORTATION

SUPERSTRUCTURE DETAILS I
STRUCTURE NO. 049-0533

| | | | | |
|--------------------|------------------|--------|--------------|-----------|
| F.A.U. RT.E. | SECTION | COUNTY | TOTAL SHEETS | SHEET NO. |
| 1199 | 49-1(HB & HB-1R) | LAKE | 225 | 125 |
| CONTRACT NO. 60L76 | | | | |

SHEET NO. S-11 OF S-33 SHEETS

ILLINOIS FED. AID PROJECT

3/7/2012 4:28:05 PM S:\101\05_CADD\60L76_RussellRdwy\60L76_Sheets\0490533-60L76-02-SDI.dgn