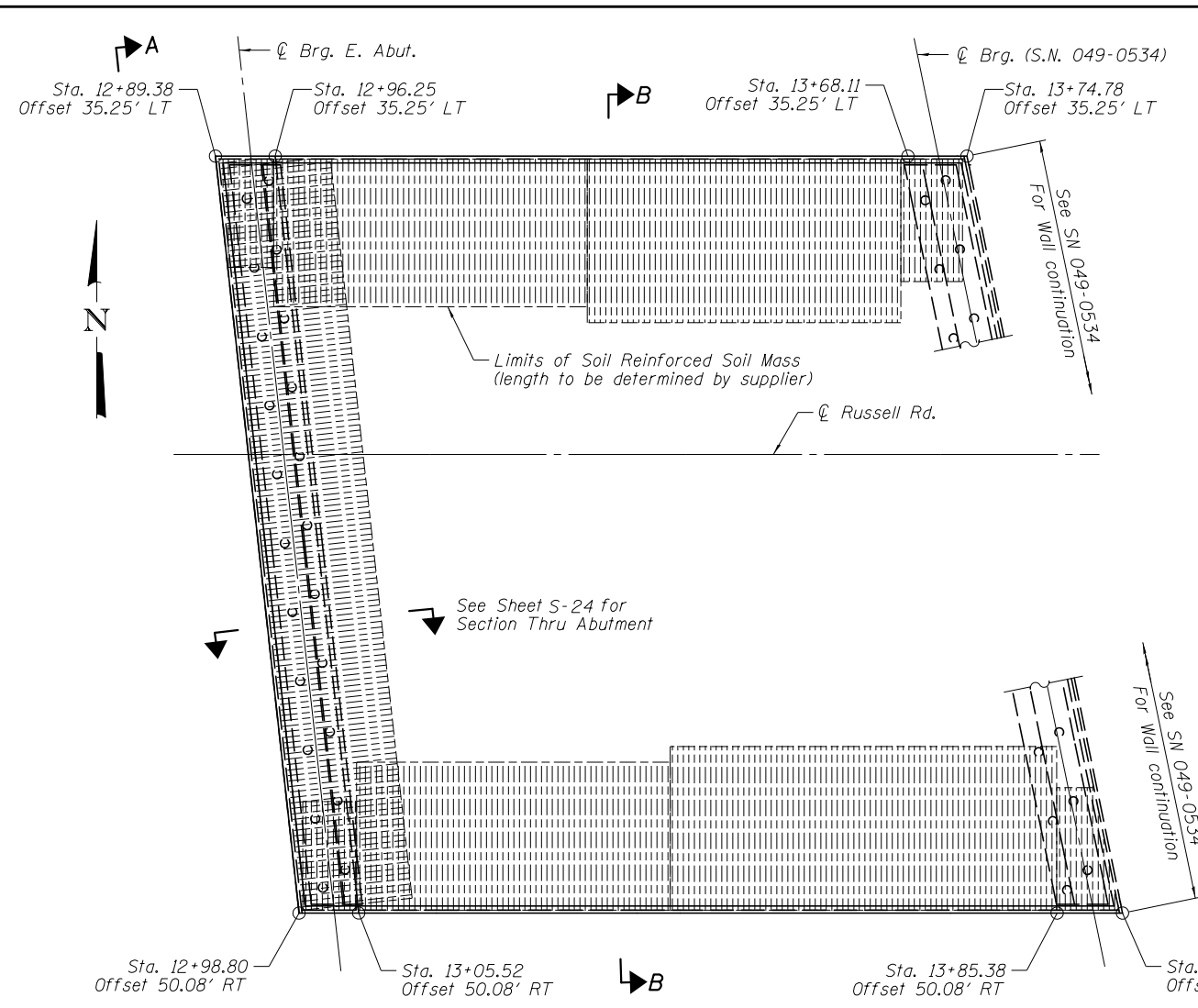
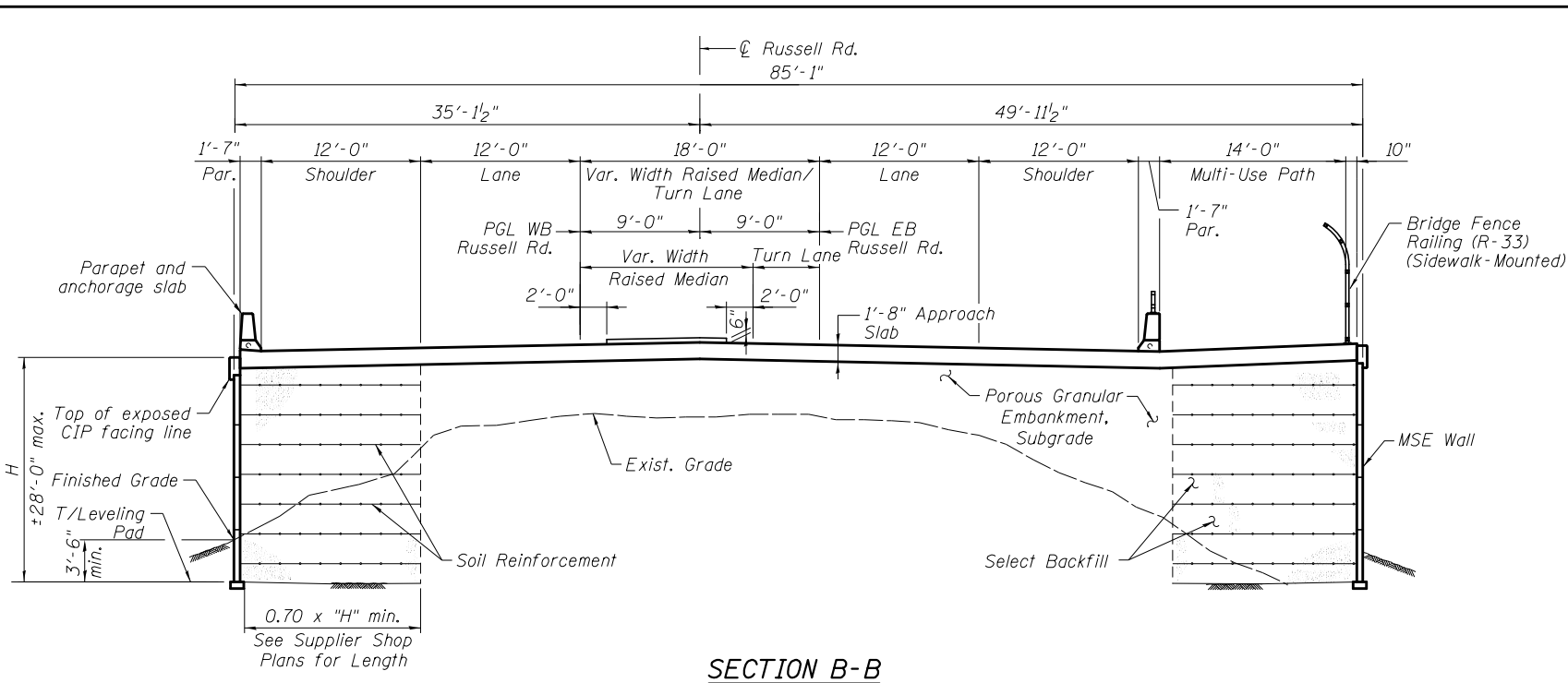


3/7/2012 4:28:10 PM

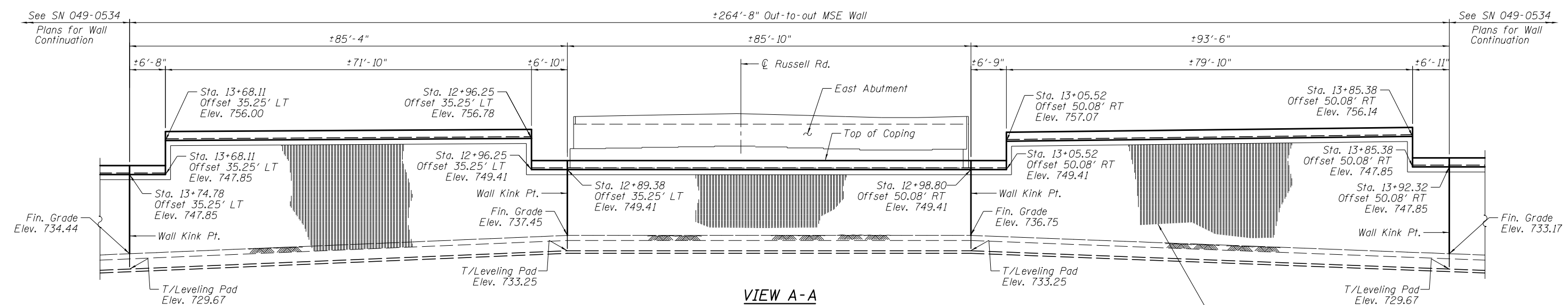
S:\1101\05\_CADD\60L76\_RussellRdwy\60L76\_Sheets\0490533-60L76-024-MSEE.dgn



**MSE WALL PLAN - EAST ABUTMENT**  
 All offsets measured to MSE Wall Front Face, perpendicular to  $\bar{C}$  Russell Rd.



**SECTION B-B**



**VIEW A-A**  
**MSE WALL ELEVATION - EAST ABUTMENT**  
 (Looking East)

Rustication Finish  
 See Sheet S-24 for details  
 (Forms to be adjusted to provide continuous rustication)

**BOWMAN, BARRETT & ASSOCIATES INC.**  
 CONSULTING ENGINEERS  
 Chicago, Illinois  
 312.228.0100  
 www.bbandainc.com

FILE NAME =	USER NAME =	DESIGNED - MRM	REVISIONS
		CHECKED - TL	REVISIONS
		DRAWN - MFR	REVISIONS
		CHECKED - SF	REVISIONS

**STATE OF ILLINOIS**  
**DEPARTMENT OF TRANSPORTATION**

**MSE WALLS, EAST ABUTMENT**  
**STRUCTURE NO. 049-0533**

SHEET NO. S-23 OF S-33 SHEETS

F.A.U. RTE.	SECTION	COUNTY	TOTAL SHEETS	SHEET NO.
1199	49-1(HB & HB-1R)	LAKE	225	137
CONTRACT NO. 60L76				

ILLINOIS FED. AID PROJECT