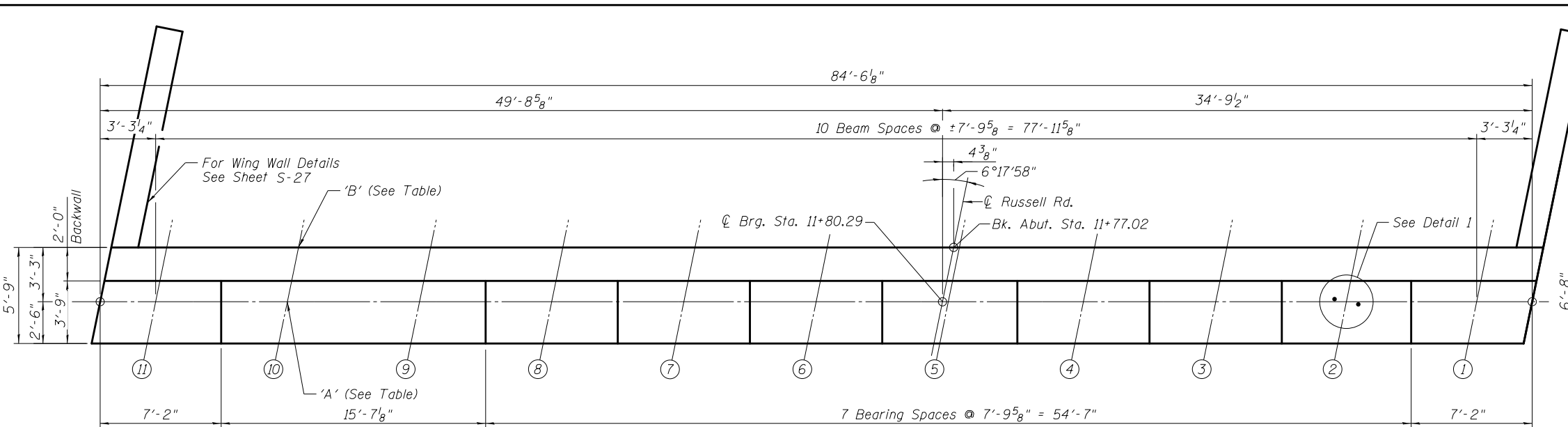
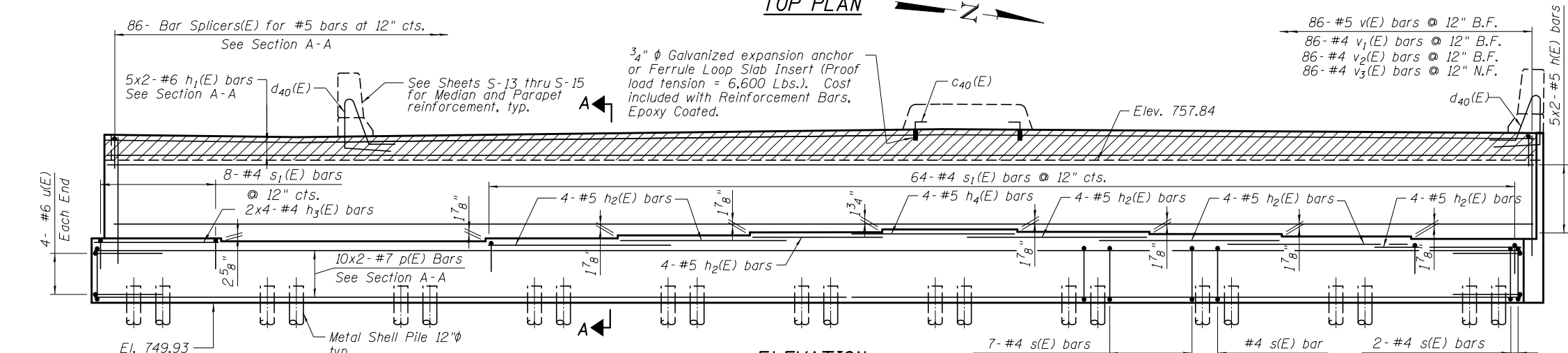


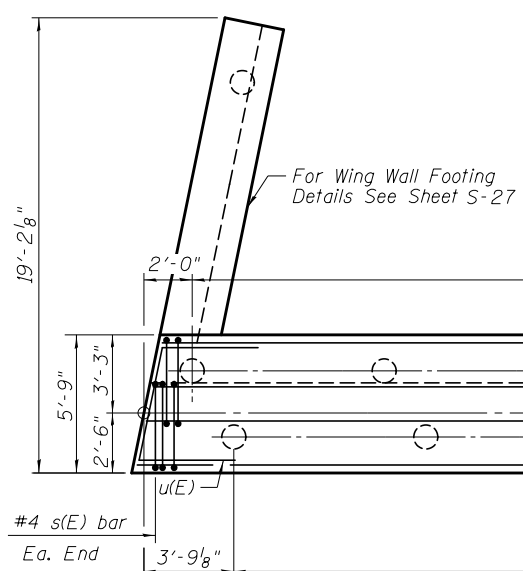
S:\1101\05_CADD\60L76_RussellRdwy\60L76_Sheets\0490533-60L76-026-WAB.dgn 1/27/2012 3:50:50 PM



TOP PLAN



ELEVATION



FOOTING PLAN

PILE DATA

Type: Metal Shell Pile-12" ϕ w/ 0.250" walls
 Nominal Required Bearing: 290 Kips
 Factored Resistance Available: 160 Kips
 Est. Length: 58'
 No. Production Piles: 23
 No. Test Piles: 1

BOWMAN, BARRETT & ASSOCIATES INC.
 CONSULTING ENGINEERS
 Chicago, Illinois
 312.228.0100
 www.bbandainc.com

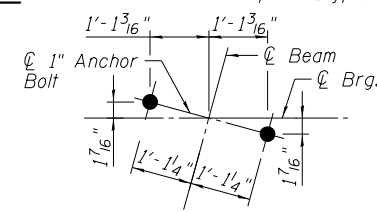
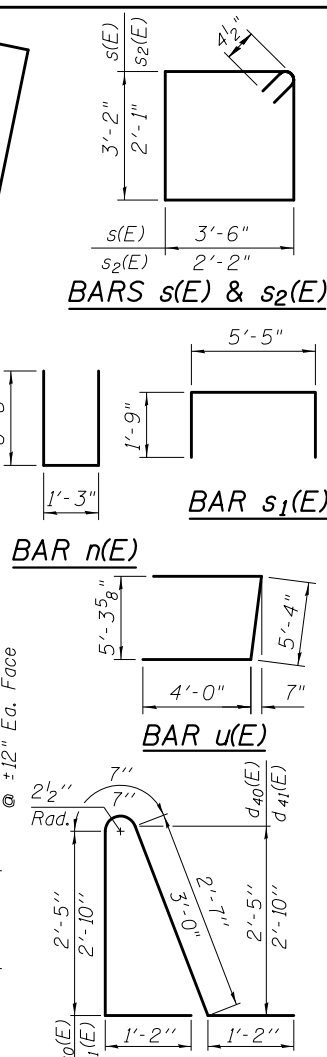
| | | | |
|-----------------------|-------------|---------------|-------------|
| FILE NAME = | USER NAME = | DESIGNED - SF | REVISIONS - |
| | | CHECKED - TL | REVISIONS - |
| | | DRAWN - MTR | REVISIONS - |
| | | CHECKED - MRM | REVISIONS - |
| PLOT SCALE = N.T.S. | | | |
| PLOT DATE = 1/27/2012 | | | |

STATE OF ILLINOIS
DEPARTMENT OF TRANSPORTATION

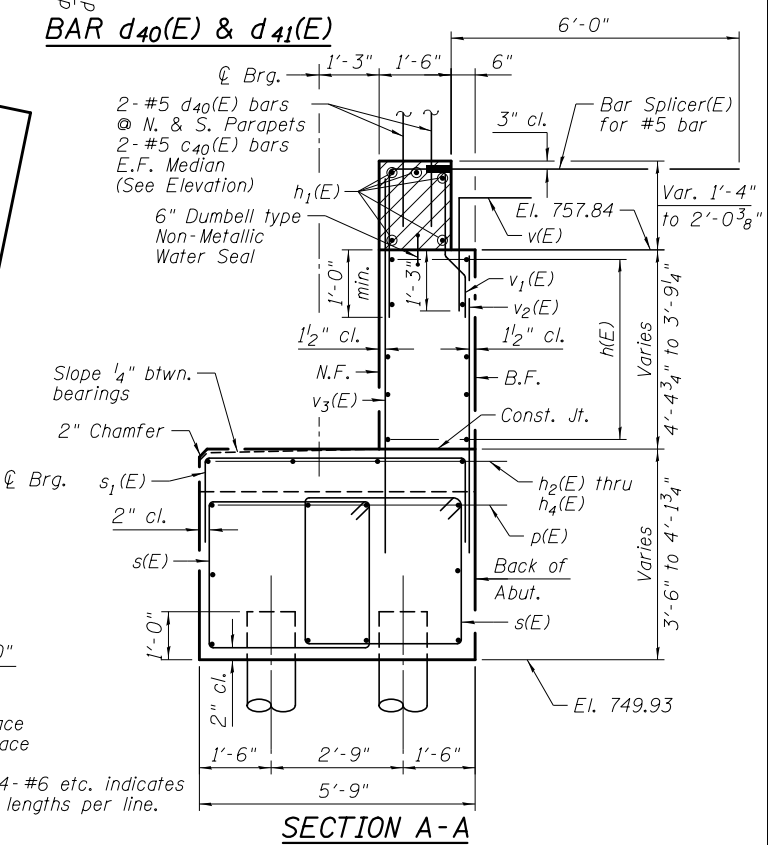
WEST ABUTMENT
STRUCTURE NO. 049-0533
 SHEET NO. S-25 OF S-33 SHEETS

WEST ABUTMENT
BILL OF MATERIAL

| Bar | No. | Size | Length | Shape |
|--|---------|------|---------|-------|
| c40(E) | 4 | #5 | 1'-4" | ┌ |
| d40(E) | 4 | #5 | 7'-11" | └ |
| h(E) | 20 | #5 | 43'-8" | — |
| h1(E) | 10 | #6 | 43'-11" | — |
| h2(E) | 28 | #5 | 11'-0" | — |
| h3(E) | 8 | #5 | 5'-6" | — |
| h4(E) | 4 | #5 | 7'-6" | — |
| h5(E) | 28 | #4 | 15'-0" | — |
| n(E) | 28 | #6 | 14'-7" | ┌ |
| p(E) | 20 | #7 | 44'-7" | — |
| p1(E) | 12 | #7 | 17'-0" | — |
| s(E) | 172 | #4 | 14'-1" | ┌ |
| s1(E) | 72 | #4 | 8'-11" | ┌ |
| s2(E) | 28 | #4 | 9'-3" | ┌ |
| u(E) | 8 | #6 | 13'-4" | └ |
| v(E) | 86 | #5 | 4'-4" | ┌ |
| v1(E) | 86 | #4 | 4'-3" | └ |
| v2(E) | 86 | #4 | 4'-10" | — |
| v3(E) | 86 | #4 | 6'-6" | — |
| Concrete Structures | Cu. Yd. | | 108.9 | |
| Reinforcement Bars, Epoxy Coated | Pound | | 8,810 | |
| Furnishing Metal Shell Piles 12"x 0.250" | Foot | | 1,334 | |
| Driving Piles | Foot | | 1,334 | |
| Test Pile Metal Shells | Each | | 1 | |
| Pile Shoes | Each | | 23 | |
| Concrete Sealer | Sq. Ft. | | 795 | |



DETAIL 1



SECTION A-A

Notes:
 Hatched area to be poured after superstructure false work has been removed. Quantity of concrete included with Concrete Superstructure, Sht. S-12 of S-33.
 Space reinforcement in cap to miss anchor bolts.
 Pour steps monolithically with cap.

N.F. - denotes Near Face
 B.F. - denotes Back Face
 Bars indicated thus 2x4-#6 etc. indicates 2 lines of bars with 4 lengths per line.