

**GENERAL NOTES**

- Fasteners shall be AASHTO M164 Type 1, mechanically galvanized bolts. Bolts 3/4 in.  $\phi$ , holes 15/16 in.  $\phi$ , unless otherwise noted.
- Calculated weight of Structural Steel :  
AASHTO M 270, Grade 36 = 26,650 Lbs.  
AASHTO M 270, Grade 50 = 401,760 Lbs.
- No field welding is permitted except as specified in the contract documents.
- Reinforcement bars shall conform to the requirements of ASTM A 706 Gr 60.
- Reinforcement bars designated (E) shall be epoxy coated.
- Concrete Sealer shall be applied to the designated areas of the exposed surfaces of backwalls, bridge seats, and front faces of pile caps.
- The Organic Zinc Rich Primer/Epoxy/Urethane Paint System shall be used for painting of new structural steel except where otherwise noted. The entire system shall be shop applied, with the exception of the exterior surfaces and bottom of the bottom flange of the fascia beams, masked-off connection surfaces, and field-installed fasteners, all of which shall be touched up and finish-coated in the field. The color of the final finish coat for all interior steel surfaces shall be Gray, Munsell No. 5B 7/1. The color of the final finish coat for the exterior and bottom flange of the fascia beams shall be Reddish-Brown, Munsell No. 2.5YR 3/4.

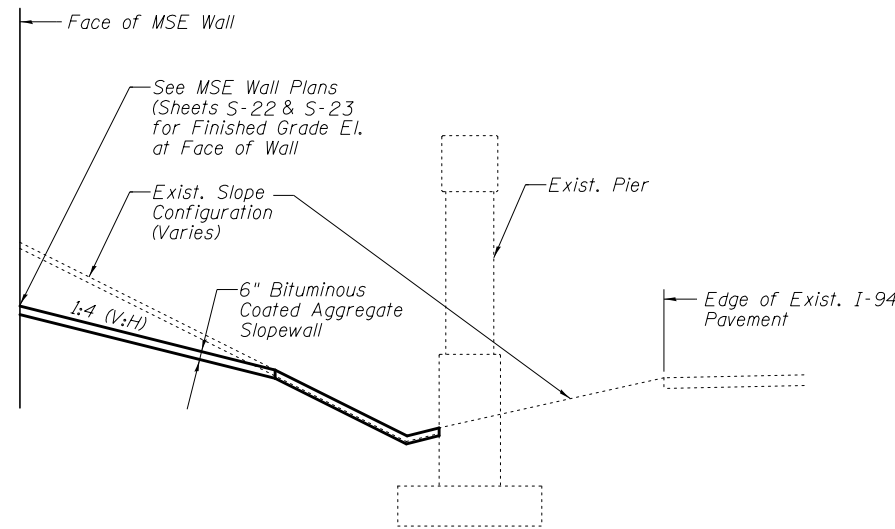
**TOTAL BILL OF MATERIAL**

ITEM	UNITS	SUPER	SUB	TOTAL
Removal of Existing Structures No. 2	Each	1	-	1
Protective Shield	Sq. Yd.	240	-	240
Structure Excavation	Cu. Yd.	-	1040	1040
Concrete Structures	Cu. Yd.	26.5	210.3	236.8
Concrete Superstructure	Cu. Yd.	696.6	-	696.6
Bridge Deck Grooving	Sq. Yd.	1,294	-	1,294
Protective Coat	Sq. Yd.	2,057	-	2,057
* Erecting Structural Steel	L. Sum	0.55	-	0.55
Stud Shear Connectors	Each	2,772	-	2,772
Reinforcement Bars, Epoxy Coated	Pound	170,710	16,380	187,090
Bar Splicers	Each	-	172	172
Bridge Fence Railing (Sidewalk)	Foot	204	-	204
Parapet Railing	Foot	201	-	201
Furnishing Metal Shell Piles 12" X 0.250"	Foot	-	2338	2338
Driving Piles	Foot	-	2338	2338
Test Pile Metal Shells	Each	-	2	2
Pile Shoes	Each	-	44	44
Name Plates	Each	-	1	1
Preformed Joint Strip Seal	Foot	174	-	174
* Erecting Elastomeric Bearing Assembly, Type I	Each	11	-	11
Anchor Bolts, 1"	Each	44	-	44
Concrete Sealer	Sq. Ft.	-	1647	1647
Drainage Scuppers, DS-12M10	Each	6	-	6
Mechanically Stabilized Earth Retaining Wall	Sq. Ft.	-	3640	3640
Bituminous Coated Aggregate Slope wall 6"	Sq. Yd.	-	680	680

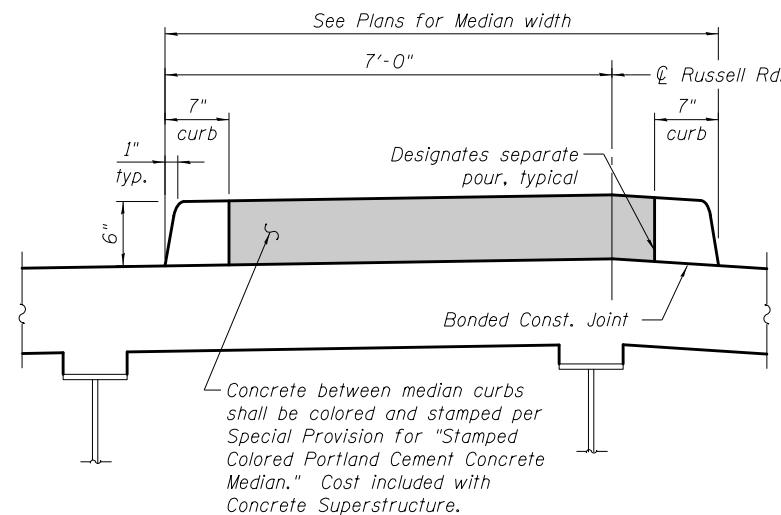
**INDEX OF SHEETS**

- General Plan and Elevation
- General Data
- Construction Staging & Details
- Top of Slab Elevations Sheet 1 of 3
- Top of Slab Elevations Sheet 2 of 3
- Top of Slab Elevations Sheet 3 of 3
- Top of West Approach Slab Elevations
- Top of East Approach Slab Elevations
- Deck Plan and Cross Section
- Superstructure Details
- Approach Slab Plans
- Approach Slab Details I
- Approach Slab Details II
- Bridge Rail Details
- Expansion Joint Details
- Drainage Scupper, DS-12M10
- Framing Plan & Beam Details
- Cross Frame Details
- Bearing Details
- MSE Walls, West Abutment
- MSE Walls, East Abutment
- MSE Wall Details
- West Abutment
- East Abutment
- Abutment Details
- Pile Details
- Bar Splicer Assembly Details
- Soil Boring Logs I
- Soil Boring Logs II
- Soil Boring Logs III
- Soil Boring Logs IV

\* Note that these items are being furnished through a separate fabrication contract.



**SLOPEWALL DETAILS**



Notes:  
- Bridge section shown, approach section similar  
- Reinforcement omitted for clarity (see Plans)

**STAMPED CONCRETE MEDIAN DETAIL**  
(Looking East)



FILE NAME =	USER NAME =	DESIGNED - LRT / AG	REVISIONS -	<b>STATE OF ILLINOIS DEPARTMENT OF TRANSPORTATION</b>	<b>GENERAL DATA STRUCTURE NO. 049-0534</b>	F.A.U. RTE.	SECTION	COUNTY	TOTAL SHEETS	SHEET NO.	
		CHECKED - OAO / LRT	REVISIONS -			1199	49-1(HB & HB-1R)	LAKE	225	149	
		PLOT SCALE = N.T.S.	REVISIONS -			CONTRACT NO. 60L76					
		PLOT DATE = 3/7/2012	REVISIONS -			ILLINOIS FED. AID PROJECT					