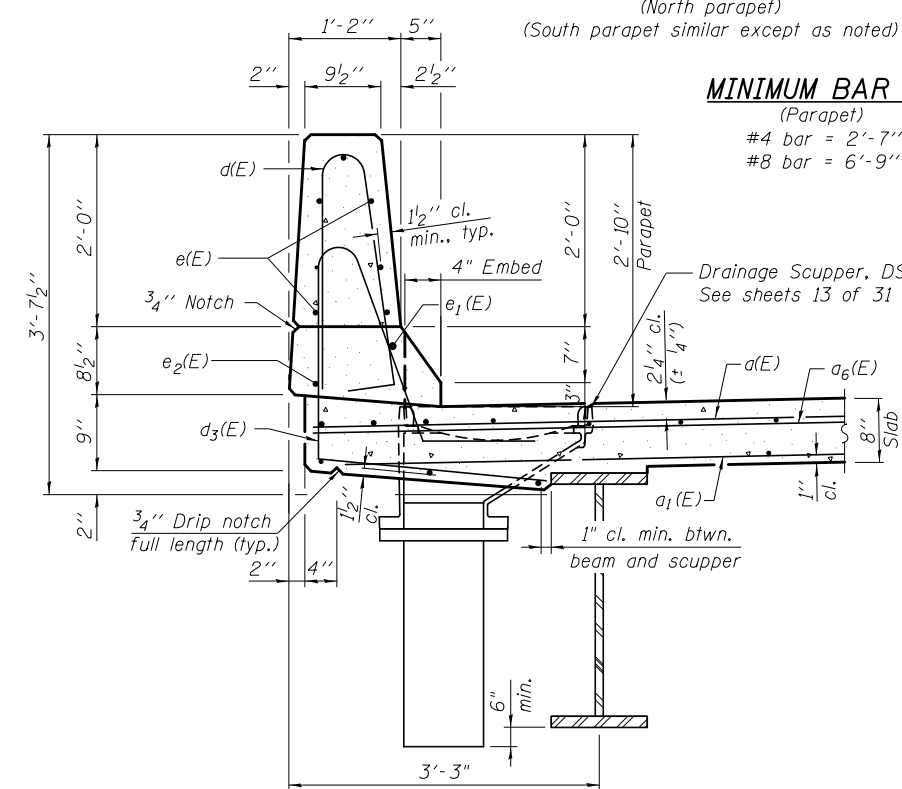


INSIDE ELEVATION OF PARAPET

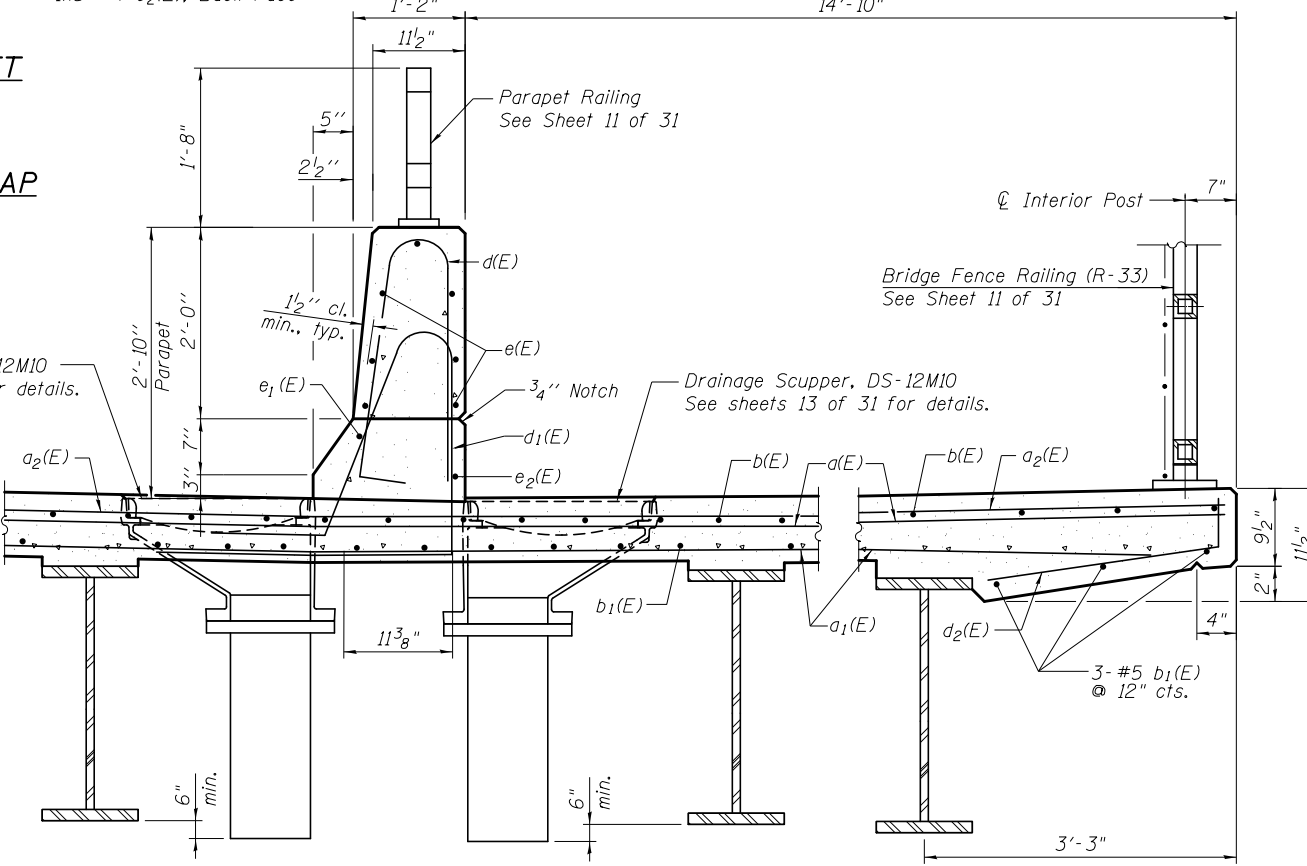
(North parapet)
(South parapet similar except as noted)

MINIMUM BAR LAP

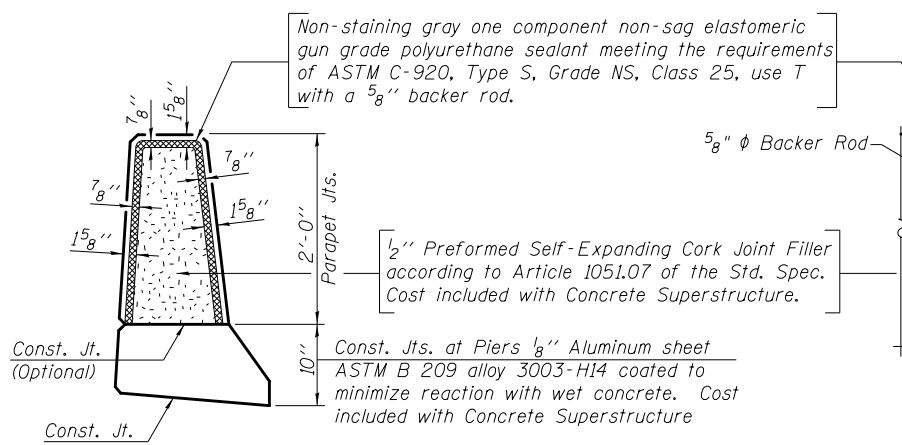
(Parapet)
#4 bar = 2'-7"
#8 bar = 6'-9"



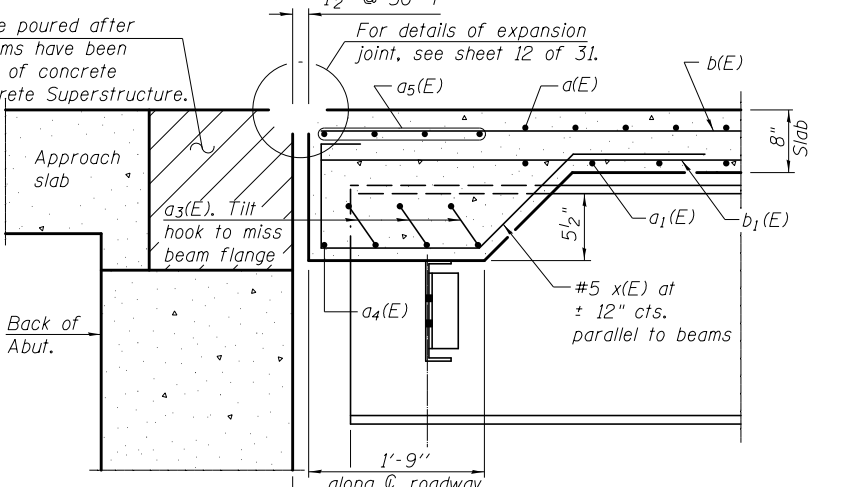
SECTION THRU PARAPET



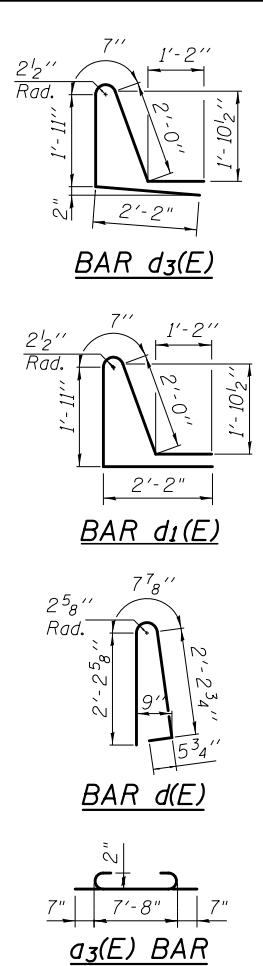
SECTION THRU PARAPET



PARAPET JOINT DETAILS



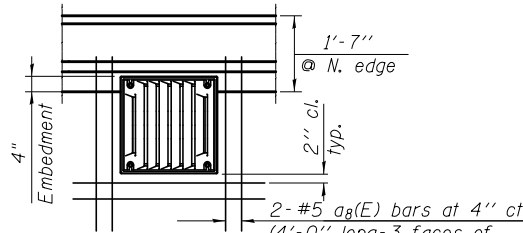
SECTION B-B



SUPERSTRUCTURE BILL OF MATERIAL

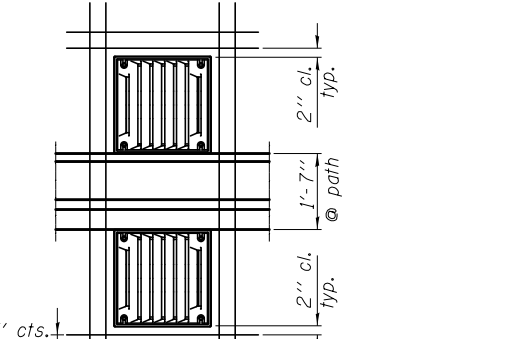
Bar	No.	Size	Length	Shape
a(E)	1180	#5	23'-6"	—
a1(E)	543	#5	30'-0"	—
a2(E)	287	#6	22'-3"	—
a3(E)	60	#5	8'-10"	—
a4(E)	8	#5	23'-9"	—
a5(E)	32	#5	24'-0"	—
a6(E)	287	#6	6'-6"	—
a8(E)	20	#5	4'-0"	—
a9(E)	8	#5	8'-0"	—
b(E)	435	#5	29'-3"	—
b1(E)	456	#5	25'-0"	—
b2(E)	25	#5	29'-3"	—
c(E)	268	#5	1'-3 1/2"	—
c1(E)	134	#5	3'-1"	—
d(E)	292	#5	5'-7"	—
d1(E)	146	#5	7'-10"	—
d2(E)	146	#5	2'-9"	—
d3(E)	146	#5	7'-10"	—
d4(E)	6	#6	4'-5"	—
d5(E)	10	#6	8'-11"	—
e(E)	112	#4	16'-4 1/2"	—
e1(E)	10	#8	32'-0"	—
e2(E)	10	#4	28'-9"	—
x(E)	152	#5	6'-5"	—
Reinforcement Bars, Epoxy Coated		Pound	94,700	
Concrete Superstructure		Cu. Yds.	339.0	
Bridge Deck Grooving		Sq. Yd.	842	
Protective Coat		Sq. Yd.	1,341	

Bars indicated thus 1 x 5 - #8 etc. indicates 1 line of bars with 5 lengths per line.



PLAN

Note: Cut longitudinal reinforcement to clear drainage scuppers.



PLAN

Note: Cut longitudinal reinforcement to clear drainage scuppers.

SDI S RUC URE DESIGNS, INC.
ENGINEERS & SURVEYORS
PH: 630-551-9790
www.sruurdesigns.com

FILE NAME =	USER NAME =	DESIGNED - LRT / AG	REVISED -
		CHECKED - OAO / LRT	REVISED -
		PLOT SCALE = N.T.S.	REVISED -
		PLOT DATE = 3/23/2012	REVISED -

STATE OF ILLINOIS DEPARTMENT OF TRANSPORTATION

SUPERSTRUCTURE DETAILS STRUCTURE NO. 049-0534

SHEET NO. 10 OF 31 SHEETS

F.A.U. RTE.	SECTION	COUNTY	TOTAL SHEETS	SHEET NO.
1199	49-1(HB & HB-1R)	LAKE	225	157
CONTRACT NO. 60L76				

ILLINOIS FED. AID PROJECT