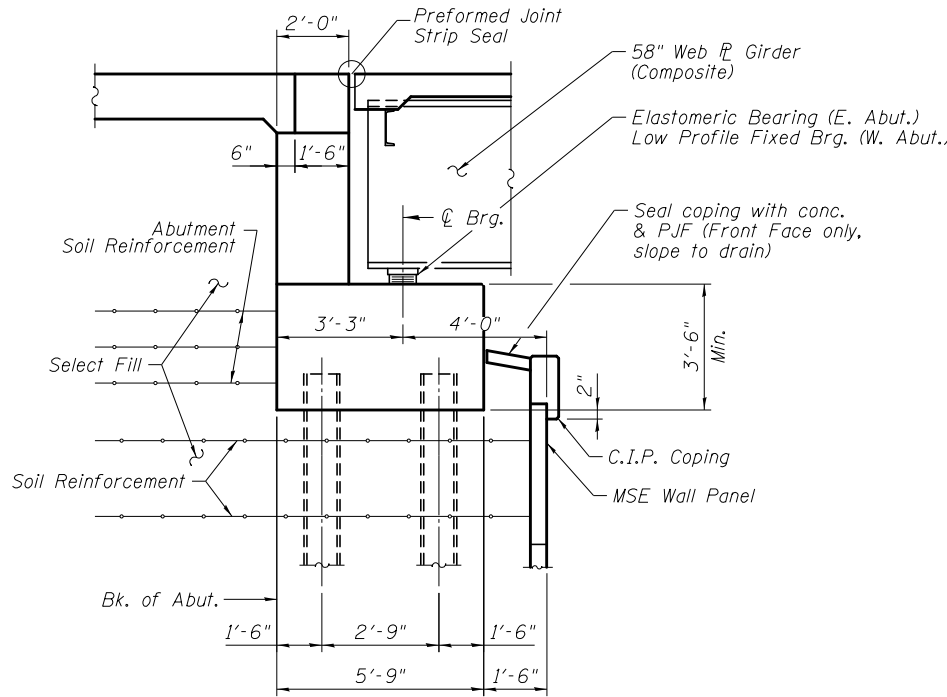
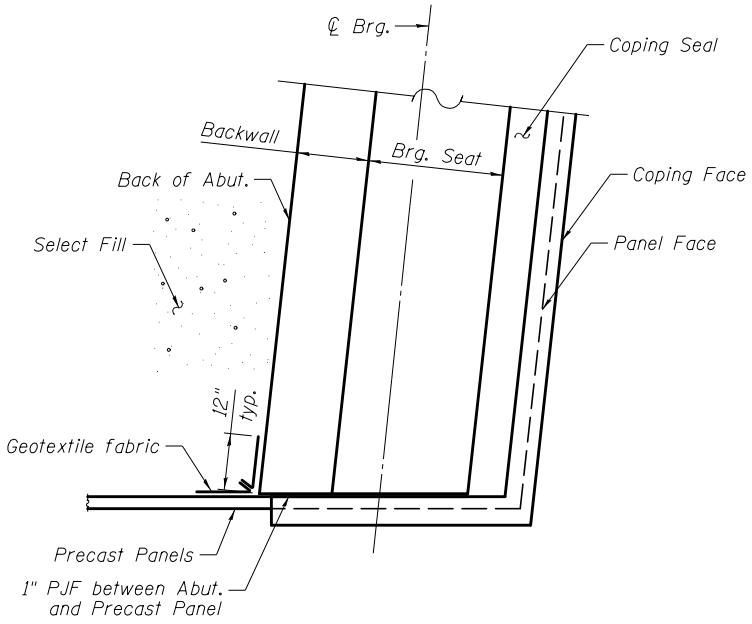


3/23/2012 12:29:24 PM

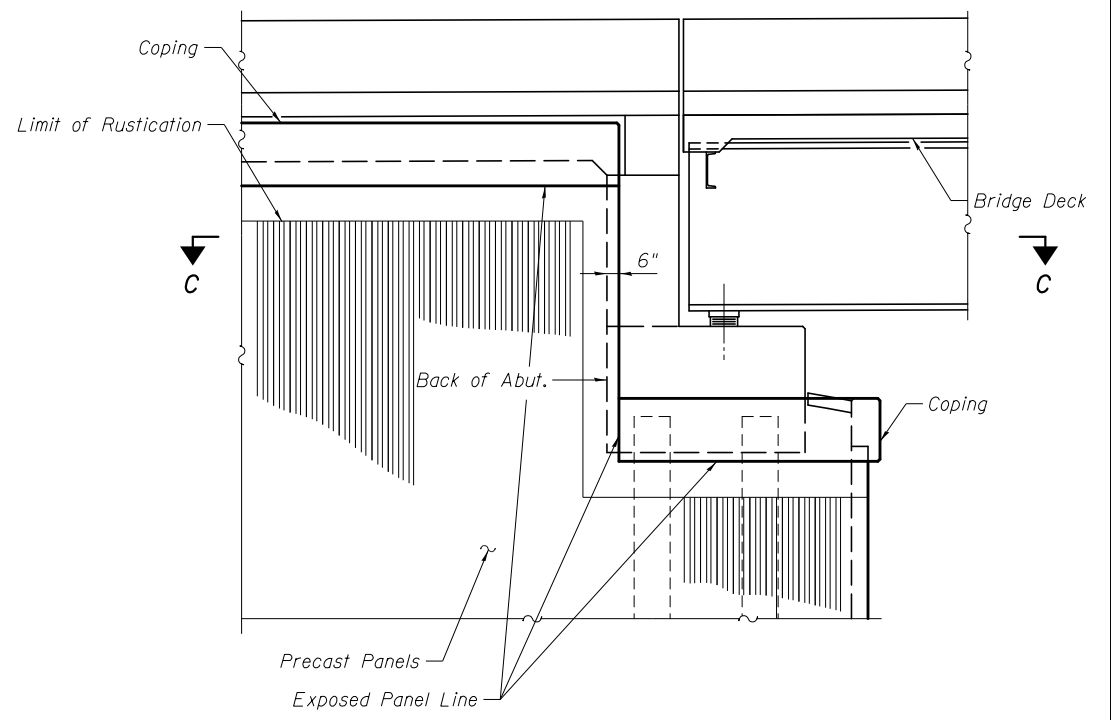
S:\1101\05_CADD\60L76_RussellRdwy\60L76_Sheets\0490534-60L76-023-MSED.dgn



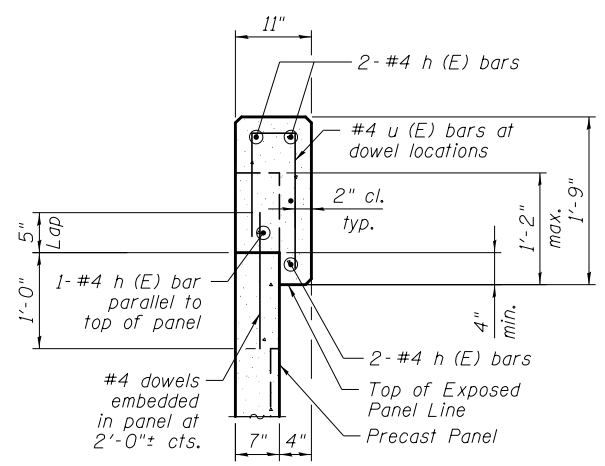
SECTION THRU ABUTMENT
(Horizontal Dimensions @ Rt. L's)



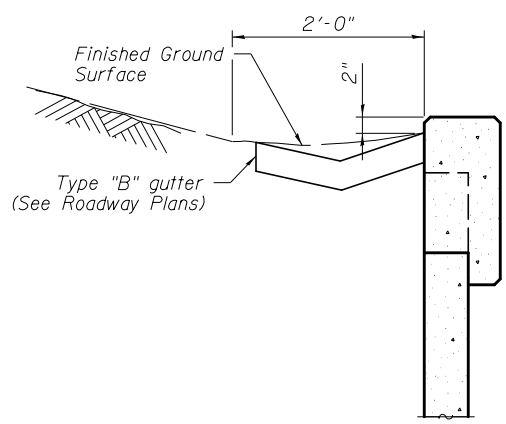
SECTION C-C



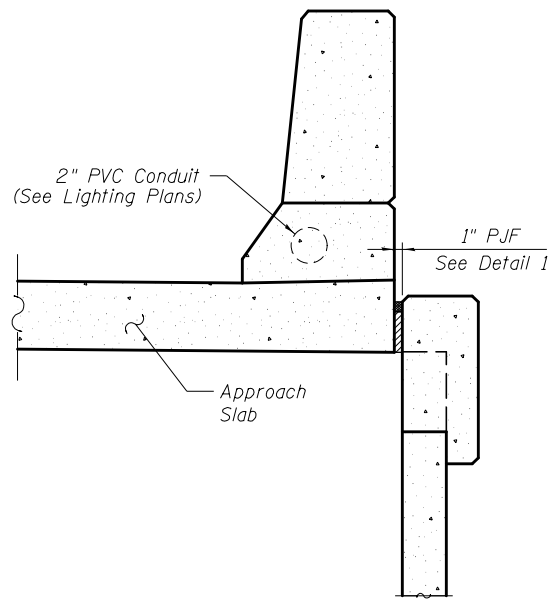
END VIEW OF WEST ABUTMENT



TYPICAL

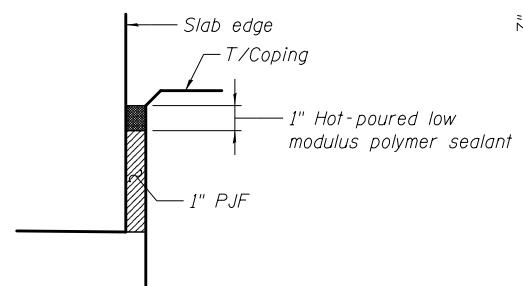


AT FLARED MSE WALLS

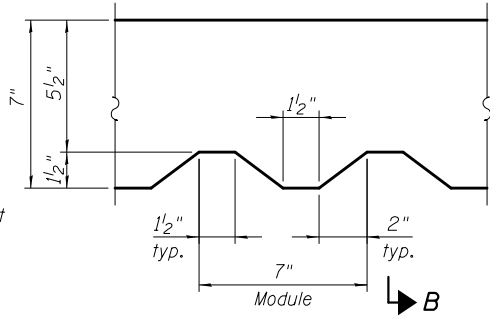


AT WRAP-AROUND MSE WALLS

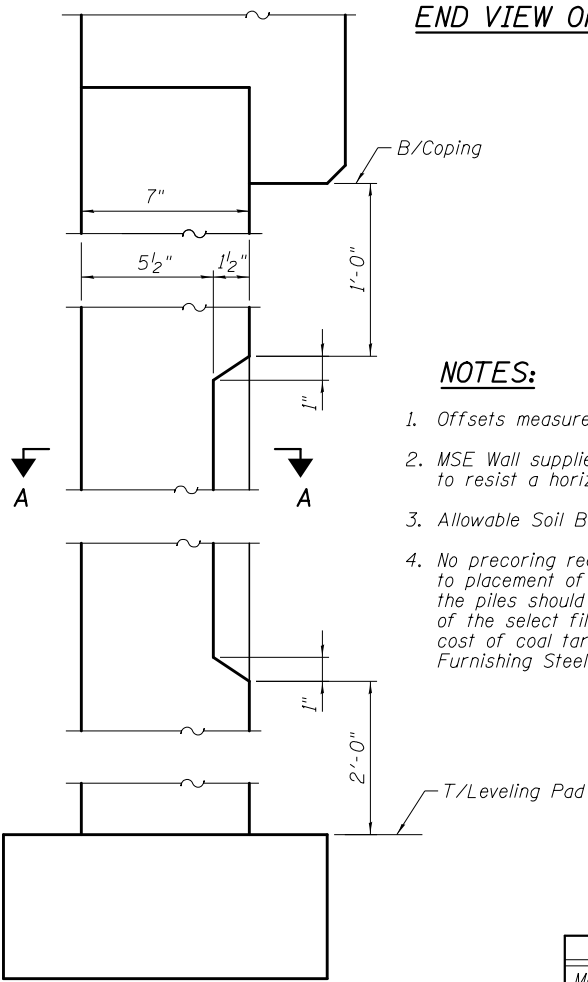
COPING DETAILS



DETAIL 1



SECTION A-A



SECTION B-B

RUSTICATION DETAILS

NOTES:

1. Offsets measured from ϕ of Russell Rd.
2. MSE Wall supplier shall design the abutment soil reinforcement to resist a horizontal force of 2.0 kip/ft of abutment.
3. Allowable Soil Bearing Capacity for the MSE Wall = 4.0 Ksf.
4. No precoring required at the abutments. Piles shall be driven prior to placement of the reinforced select backfill. After driving piles, the piles should be coated with coal tar epoxy from the bottom of the select fill to 1 inch above the base of the abutments. The cost of coal tar epoxy coating shall be included with the cost of Furnishing Steel Piles HP

BILL OF MATERIAL

Item	Unit	Quantity
Mechanically Stabilized Earth Retaining Wall	Sq. Ft.	3,640
Structure Excavation	Cu. Yd.	1,040

BOWMAN, BARRETT & ASSOCIATES INC.
CONSULTING ENGINEERS
Chicago, Illinois
312.228.0100
www.bbandainc.com

FILE NAME =	USER NAME =	DESIGNED - MRM	REVISED -
		CHECKED - TL	REVISED -
		DRAWN - MTR	REVISED -
		CHECKED - SF	REVISED -

STATE OF ILLINOIS
DEPARTMENT OF TRANSPORTATION

MSE WALL DETAILS
STRUCTURE NO. 049-0534

SHEET NO. S-22 OF S-31 SHEETS

F.A.U. RTE.	SECTION	COUNTY	TOTAL SHEETS	SHEET NO.
1199	49-1(HB & HB-1R)	LAKE	225	169
CONTRACT NO. 60L76				

ILLINOIS FED. AID PROJECT