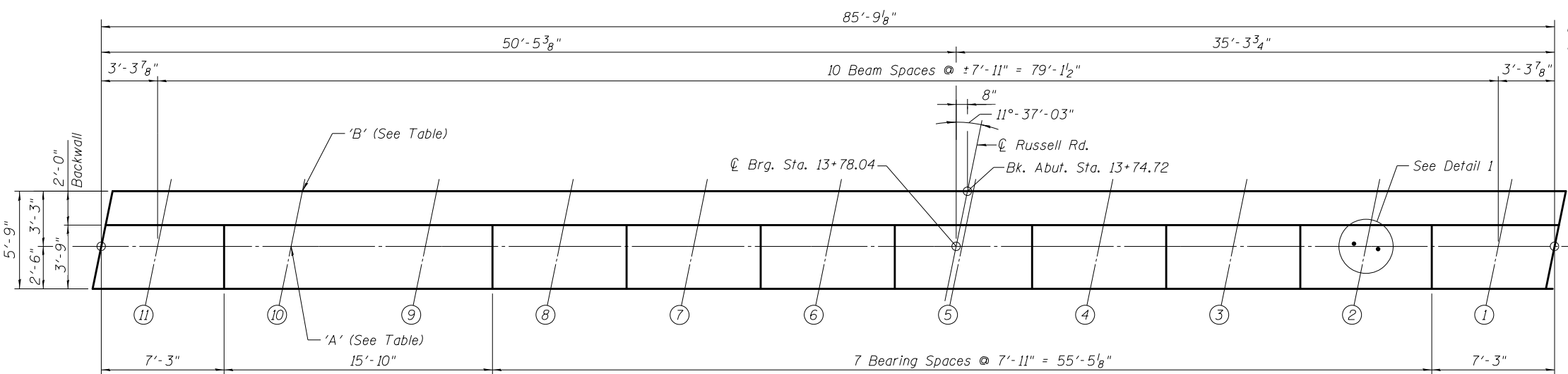
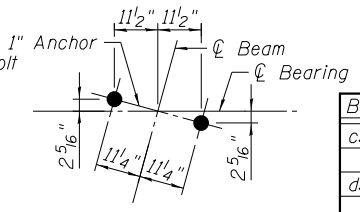


S:\101\05_CADD\60L76_RussellRdwy\60L76_Sheets\0490534-60L76-024-WAB.dgn
 1/27/2012 3:33:30 PM



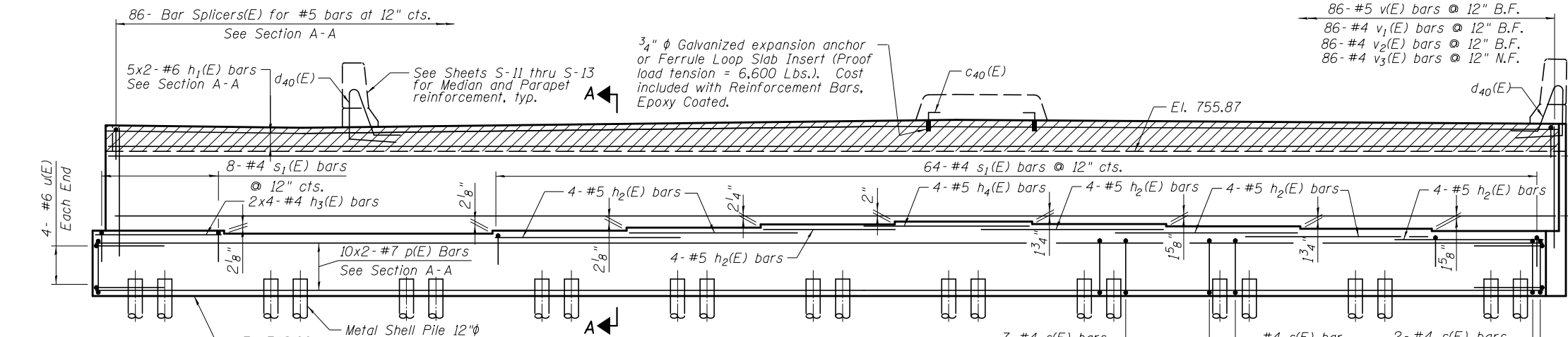
TOP PLAN



DETAIL 1

**WEST ABUTMENT
BILL OF MATERIAL**

Bar	No.	Size	Length	Shape
c40(E)	4	#5	1'-4"	┌
d40(E)	4	#5	8'-9"	└
h(E)	20	#5	44'-3"	—
h1(E)	10	#6	44'-6"	—
h2(E)	28	#5	11'-0"	—
h3(E)	8	#5	5'-6"	—
h4(E)	4	#5	7'-6"	—
p(E)	20	#7	45'-0"	—
s(E)	172	#4	14'-1"	┌
s1(E)	72	#4	8'-11"	┌
u(E)	8	#6	13'-5"	└
v(E)	86	#5	4'-4"	┌
v1(E)	86	#4	4'-3"	└
v2(E)	86	#4	5'-4"	—
v3(E)	86	#4	7'-0"	—
Concrete Structures	Cu. Yd.		95.5	
Reinforcement Bars, Epoxy Coated	Pound		7,430	
Furnishing Metal Shell Piles 12"x 0.250"	Foot		1,050	
Driving Piles	Foot		1,050	
Test Pile Metal Shells	Each		1	
Pile Shoes	Each		21	
Concrete Sealer	Sq. Ft.		799	



ELEVATION

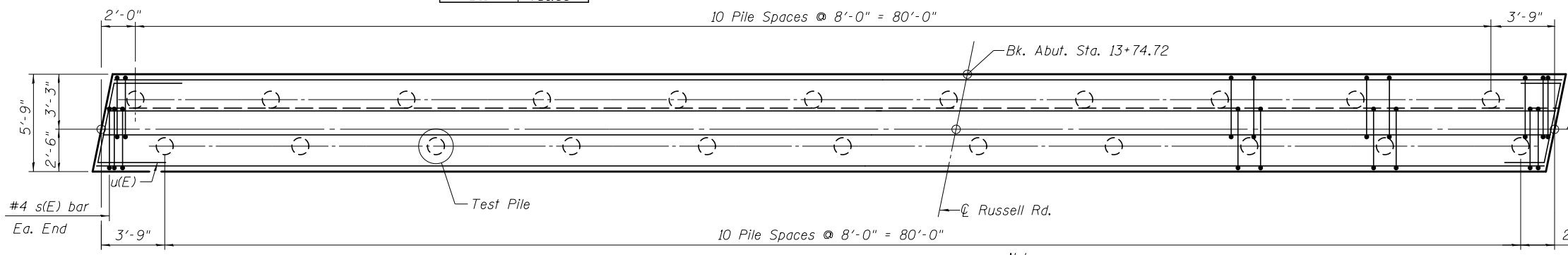
PILE DATA

Type: Metal Shell Pile-12" φ w/ 0.250" walls
 Nominal Required Bearing: 290 Kips
 Factored Resistance Available: 160 Kips
 Est. Length: 50'
 No. Production Piles: 21
 No. Test Piles: 1

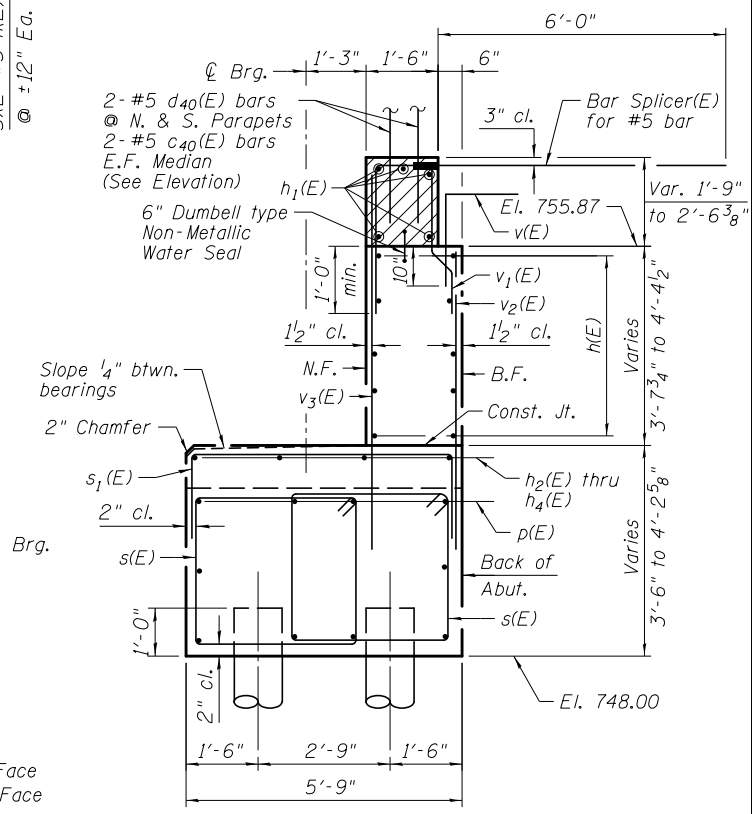
Beam No.	'A'
B1	751.66
B2	751.80
B3	751.94
B4	752.08
B5	752.22
B6	752.05
B7	751.86
B8	751.68
B9	751.50
*B10	751.50
B11	751.68

'A' - Bearing Seat Elevations given at intersection of Bearing and Beam

* Provide Shim at Beam 10



FOOTING PLAN



SECTION A-A

Notes:
 Hatched area to be poured after superstructure false work has been removed. Quantity of concrete included with Concrete Superstructure, Sht. S-10 of S-31.
 Space reinforcement in cap to miss anchor bolts.
 Pour steps monolithically with cap.

N.F. - denotes Near Face
 B.F. - denotes Back Face
 For Bar Bending Details, see Sheet S-24.
 Bars indicated thus 2x4-#6 etc. indicates 2 lines of bars with 4 lengths per line.

BOWMAN, BARRETT & ASSOCIATES INC.
 CONSULTING ENGINEERS
 Chicago, Illinois
 312.228.0100
 www.bbainc.com

FILE NAME =	USER NAME =	DESIGNED -	CHECKED -	REVISIONS
		SF	TL	
		MTR	MRM	

**STATE OF ILLINOIS
DEPARTMENT OF TRANSPORTATION**

**WEST ABUTMENT
STRUCTURE NO. 049-0534**
 SHEET NO. S-23 OF S-31 SHEETS

F.A.U. RTE.	SECTION	COUNTY	TOTAL SHEETS	SHEET NO.
1199	49-1(HB & HB-1R)	LAKE	225	170

CONTRACT NO. 60L76

ILLINOIS FED. AID PROJECT