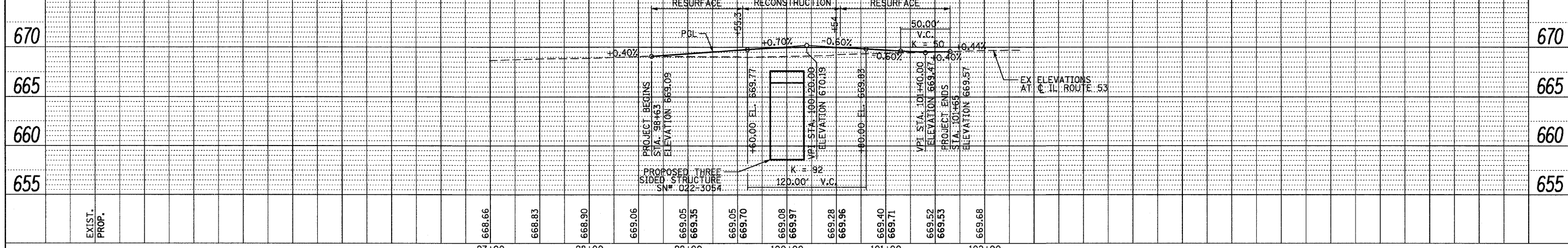
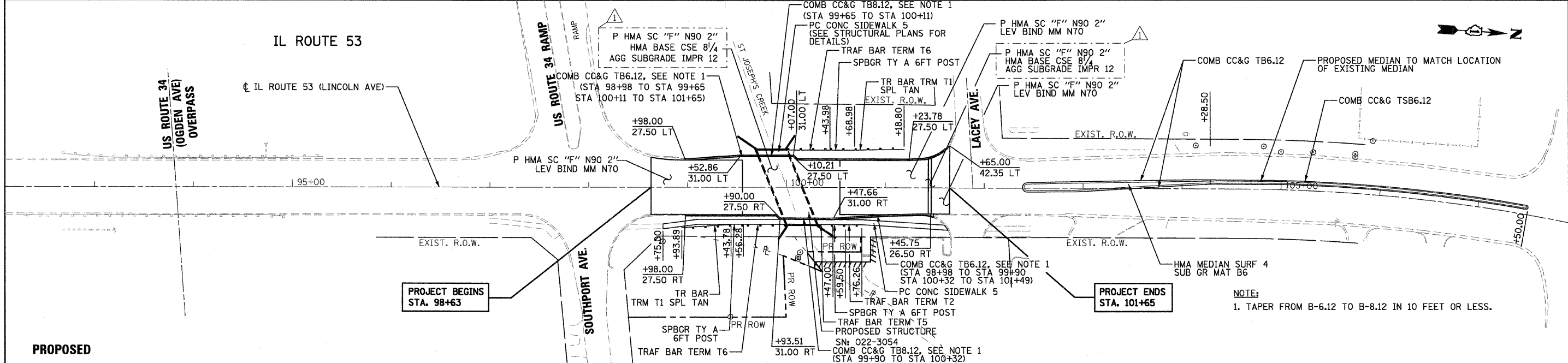
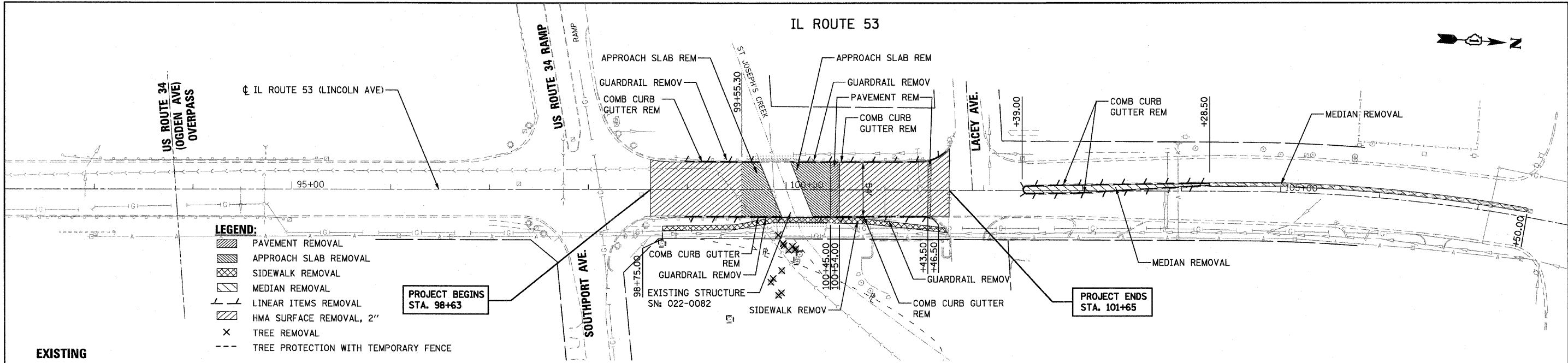


PLAN	SURVEYED	DATE
	ALIGNED	
	NOTED	
	BY	
	NO.	

PROFILE	SURVEYED	DATE
	GRADES	
	NOTED	
	BY	
	NO.	



FILE NAME = ...\\0160M83-sht-plnprof.dgn	Primera	DESIGNED - RJD DRAWN - GEW CHECKED - RJD DATE - 12/12/2011	REVISED - 3/27/2012 JRB REVISED - REVISED - REVISED -	STATE OF ILLINOIS DEPARTMENT OF TRANSPORTATION	IL ROUTE 53 OVER ST JOSEPH'S CREEK EXISTING AND PROPOSED ROADWAY PLAN AND PROFILE	F.A.P. RTE. 870 SECTION 534 R-B COUNTY TOTAL SHEETS 51 SHEET NO. 9	SCALE: 1"=50' SHEET NO. 1 OF 1 SHEETS STA. 98+63 TO STA. 101+65	CONTRACT NO. 60M83 ILLINOIS FED. AID PROJECT
--	----------------	---	--	---	--	--	---	---