

F.A.P. RTE.	SECTION	COUNTY	TOTAL SHEETS	SHEET NO.
870	534R-B	DuPAGE	51	1
FED ROAD DIST NO. 1 ILLINOIS			CONTRACT NO. 60M83	

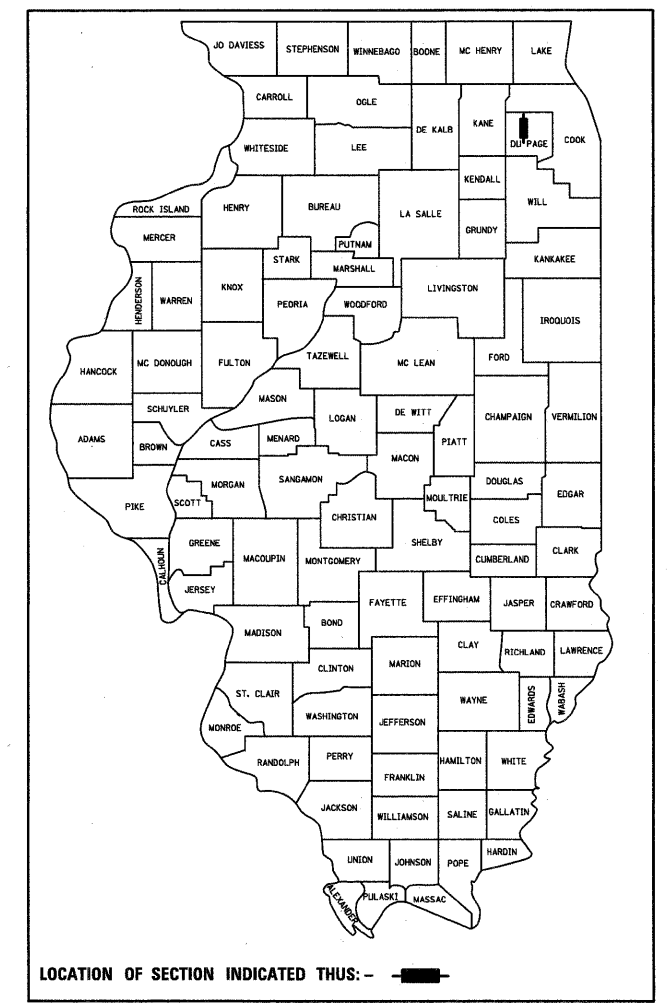
* 51 + 1 = 52

D-91-170-11

STATE OF ILLINOIS
DEPARTMENT OF TRANSPORTATION
DIVISION OF HIGHWAYS

**PROPOSED
HIGHWAY PLANS**

F.A.P. 870 / IL ROUTE 53 (LINCOLN AVE.) OVER ST JOSEPH'S CREEK
BRIDGE REPLACEMENT
SECTION 534R-B
PROJECT NO. ACBRF-0870(014)
DuPAGE COUNTY
C-91-170-11

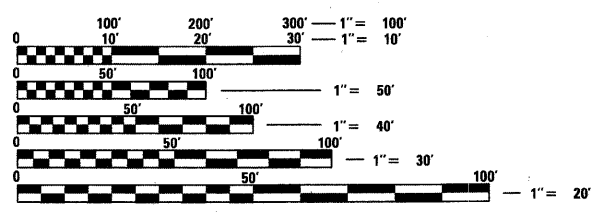


FOR INDEX OF SHEETS, SEE SHEET NO. 2

TRAFFIC DATA:

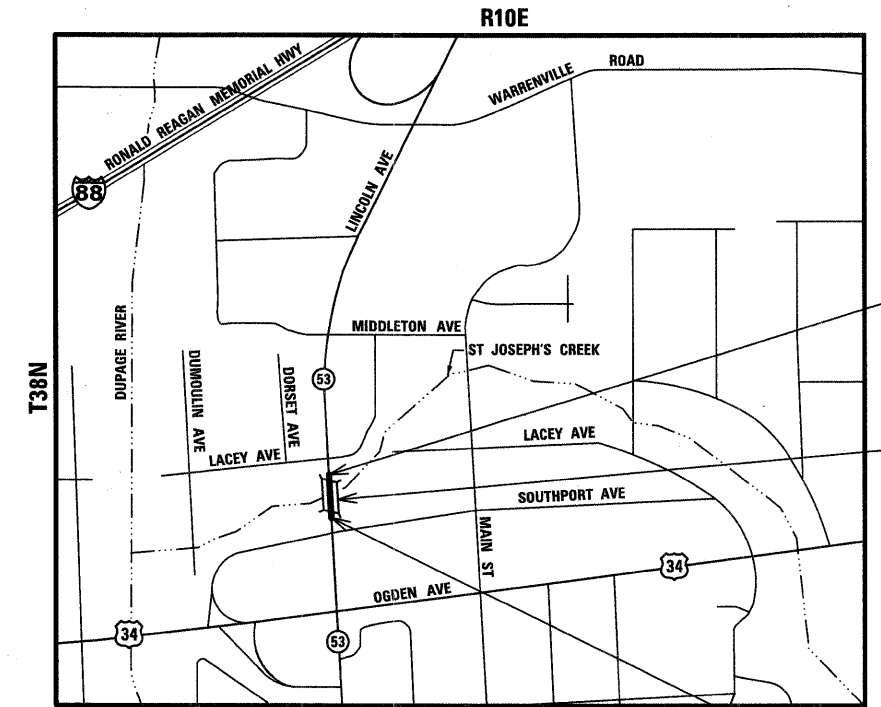
EXISTING ADT IL ROUTE 53 = 25,500 (2002)
PROPOSED ADT IL ROUTE 53: 35,505 (2021)
POSTED SPEED = 35 MPH

PROJECT IS LOCATED IN THE VILLAGE OF LISLE



FULL SIZE PLANS HAVE BEEN PREPARED USING STANDARD ENGINEERING SCALES. REDUCED SIZED PLANS WILL NOT CONFORM TO STANDARD SCALES. IN MAKING MEASUREMENTS ON REDUCED PLANS, THE ABOVE SCALES MAY BE USED.

J.U.L.I.E.
JOINT UTILITY LOCATION INFORMATION FOR EXCAVATION
1-800-892-0123 OR 811



PROJECT ENDS
STA. 101 + 65.00

PROJECT LOCATION:
IL ROUTE 53 (LINCOLN AVE.)
OVER ST JOSEPH'S CREEK
EXISTING SN: 022-0082
PROPOSED SN: 022-3054

PROJECT CONSISTS OF THE REMOVAL OF THE EXISTING BRIDGE (SN: 022-0082 EXISTING) AND REPLACEMENT WITH A THREE SIDED PRECAST CONCRETE STRUCTURE (SN: 022-3054 PROPOSED) AND THE REMOVAL AND REPLACEMENT OF THE EXISTING APPROACH ROADWAY OF IL ROUTE 53 (LINCOLN AVE) OVER ST. JOSEPH'S CREEK.

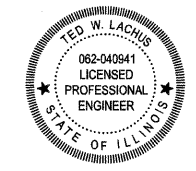
PROJECT BEGINS
STA. 98 + 63.00

SECTION 3
LISLE TOWNSHIP
LOCATION MAP
NOT TO SCALE

GROSS AND LENGTH OF PROJECT = 302.0 FEET = 0.057 MILES

PROJECT MANAGER ISSAM RAYYAN, PE (847) 705-4550
PROJECT ENGINEER ROBERT T. BORO, PE (847) 705-4178
CONTRACT NO. 60M83

Primera
100 S. WACKER DRIVE SUITE 700 CHICAGO IL 60606.
P:312-606-0910 F:312-606-0415



Ted W. Lachus, P.E.
EXPIRES 11-30-2011
DATE 8-26-2011

STATE OF ILLINOIS
DEPARTMENT OF TRANSPORTATION
DIVISION OF HIGHWAYS

SUBMITTED OCTOBER 20 20 11

Diana M. O'Keefe
DEPUTY DIRECTOR OF HIGHWAYS, REGION ENGINEER

March 23 20 12
John D. Baranowski, P.E.
ENGINEER OF DESIGN AND ENVIRONMENT

March 23 20 12
William B. Flynn, Jr.
DIRECTOR OF HIGHWAYS, CHIEF ENGINEER

**PRINTED BY THE AUTHORITY
OF THE STATE OF ILLINOIS**

INDEX OF SHEETS

- 1 COVER SHEET
- 2 INDEX OF SHEETS, STATE STANDARDS, GENERAL NOTES AND COMMITMENTS
- 3-5 SUMMARY OF QUANTITIES
- 6 SCHEDULE OF QUANTITIES
- 7 EXISTING AND PROPOSED TYPICAL SECTIONS
- 8 ALIGNMENT, TIES AND BENCHMARKS
- 9 EXISTING AND PROPOSED ROADWAY PLAN AND PROFILE
- 10 MOT GENERAL NOTES AND SUGGESTED CONSTRUCTION SEQUENCING
- 11 MOT TYPICAL SECTIONS
- 12 SUGGESTED STAGE OF CONSTRUCTION & TRAFFIC CONTROL - STAGE 1
- 13 SUGGESTED STAGE OF CONSTRUCTION & TRAFFIC CONTROL - STAGE 2
- 14 EROSION CONTROL PLAN
- 15 DRAINAGE AND UTILITY PLAN
- 16 CREEK GRADING AND COMPENSATORY STORAGE PLAN
- 17 PLAT OF HIGHWAYS
- 18 PAVEMENT MARKING AND LANDSCAPING PLAN
- 19-24 DISTRICT ONE STANDARD TRAFFIC SIGNAL DESIGN DETAILS
- 25 TEMPORARY TRAFFIC SIGNAL INSTALLATION PLAN
- 26 TEMPORARY CABLE PLAN, TEMPORARY PHASE DESIGNATION DIAGRAM, AND SCHEDULE OF QUANTITIES
- 27 PROPOSED INTERCONNECT PLAN
- 28 PROPOSED INTERCONNECT SCHEMATIC
- 29-40 STRUCTURE PLANS
- 41 MISCELLANEOUS DETAILS
- 42-46 CROSS SECTIONS
- 47 BD-24 CURB OR CURB AND GUTTER REMOVAL AND REPLACEMENT
- 48 TC-10 DISTRICT ONE TRAFFIC CONTROL AND PROTECTION FOR SIDE ROADS, INTERSECTIONS, AND DRIVEWAYS
- 49 TC-11 DISTRICT ONE TYPICAL APPLICATIONS RAISED REFLECTIVE PAVEMENT MARKERS (SNOW-PLOW RESISTANT)
- 50 TC-13 DISTRICT ONE TYPICAL PAVEMENT MARKINGS
- 51 TC-22 DISTRICT ONE ARTERIAL ROAD INFORMATION SIGN

* Added 17A.

STATE STANDARDS

- 000001-06 STANDARD SYMBOLS, ABBREVIATIONS AND PATTERNS
- 001006 DECIMAL OF AN INCH AND OF A FOOT
- 280001-06 TEMPORARY EROSION CONTROL SYSTEMS
- 420401-08 BRIDGE APPROACH PAVEMENT CONNECTOR
- 424001-06 CURB RAMPS FOR SIDEWALKS
- 515001-03 NAME PLATE FOR BRIDGES
- 602601-02 PRECAST REINFORCED CONCRETE FLAT SLAB TOP
- 604001-03 FRAME AND LIDS TYPE 1
- 606001-04 CONCRETE CURB TYPE B AND COMBINATION CONCRETE CURB AND GUTTER
- 630001-10 STEEL PLATE BEAM GUARDRAIL
- 631011-08 TRAFFIC BARRIER TERMINAL, TYPE 2
- 631026-05 TRAFFIC BARRIER TERMINAL, TYPE 5
- 631031-10 TRAFFIC BARRIER TERMINAL, TYPE 6
- 701311-03 LANE CLOSURE, 2L, 2W, MOVING OPERATIONS-DAY ONLY
- 701321-12 LANE CLOSURE, 2L, 2W, BRIDGE REPAIR WITH BARRIER
- 701606-08 URBAN LANE CLOSURE, MULTILANE, 2W WITH MOUNTABLE MEDIAN
- 701701-08 URBAN LANE CLOSURE, MULTILANE INTERSECTION
- 701901-02 TRAFFIC CONTROL DEVICES
- 704001-07 TEMPORARY CONCRETE BARRIER
- 886001-01 DETECTOR LOOP INSTALLATIONS

GENERAL NOTES:

1. THESE PLANS HAVE BEEN PREPARED FROM INFORMATION ACQUIRED FROM EXISTING PLANS AND NOTES RECEIVED FROM IDOT FIELD MAINTENANCE ENGINEERS.
2. PLAN DIMENSIONS AND DETAILS RELATIVE TO EXISTING PLANS ARE SUBJECT TO VARIATIONS FOUND IN THE FIELD. THE CONTRACTOR SHALL FIELD VERIFY EXISTING DIMENSIONS AND DETAILS AFFECTING NEW CONSTRUCTION AND MAKE NECESSARY ADJUSTMENTS PRIOR TO CONSTRUCTION OR ORDERING MATERIALS. ANY ADJUSTMENTS PROPOSED BY THE CONTRACTOR MUST BE APPROVED BY THE ENGINEER. SUCH VARIATIONS SHALL NOT BE CAUSE FOR ADDITIONAL COMPENSATION FOR A CHANGE IN THE SCOPE OF THE WORK, HOWEVER, THE CONTRACTOR WILL BE PAID FOR THE QUANTITY ACTUALLY FURNISHED BASED UPON THE UNIT PRICE.
3. FORTY- EIGHT HOURS BEFORE STARTING EXCAVATION, THE CONTRACTOR WILL CALL J.U.L.I.E. (1-800-892-0123) OR 811 FOR LOCATIONS OF THE EXISTING UTILITIES.
4. THE CONTRACTOR WILL NOT BE ALLOWED TO SET UP A YARD OR FIELD OFFICE ON STATE PROPERTY WITHOUT WRITTEN PERMISSION FROM THE DEPARTMENT.
5. SAW CUTTING PRIOR TO ANY REMOVAL ITEMS NOTED ON THE PLANS OR DIRECTED BY THE ENGINEER SHALL BE CONSIDERED INCLUDED IN THE COST OF THE ITEMS BEING REMOVED.
6. DO NOT SCALE PLANS FOR CONSTRUCTION DIMENSIONS.
7. THE CONTRACTOR SHALL USE CARE IN REMOVING OR EXCAVATING NEAR ALL EXISTING ITEMS WHICH WILL REMAIN. ANY DAMAGE DONE TO EXISTING ITEMS BY THE CONTRACTOR SHALL BE REPAIRED AT THE CONTRACTOR'S EXPENSE.
8. WHEN ARTIFICIAL LIGHTING IS UTILIZED IN NIGHT OPERATIONS, THE CONTRACTOR SHALL EXERCISE THE UTMOST PRECAUTION IN PREVENTING ADVERSE VISIBILITY TO THE MOTORING PUBLIC AS WELL AS ADJOINING RESIDENTIAL AREAS.
9. THE CONTRACTOR SHALL OBTAIN ALL NECESSARY PERMITS, AS REQUIRED, PRIOR TO COMMENCING WITH CONSTRUCTION.
10. THE CONTRACTOR SHALL TAKE ALL NECESSARY MEASURES TO ASSURE THAT NO DEBRIS FALLS INTO ST. JOSEPH'S CREEK. THE COST OF THIS WORK SHALL BE INCLUDED IN THE VARIOUS PAY ITEMS.
11. THE CONTRACTOR SHALL CONTACT THE TRAFFIC CONTROL SUPERVISOR AT (847) 705-4470 A MINIMUM OF 72 HOURS PRIOR TO THE PLACEMENT OF ANY TEMPORARY TRAFFIC CONTROL DEVICES.
12. THE ENGINEER SHALL CONTACT DON CHIARUG, THE AREA TRAFFIC FIELD ENGINEER, AT (847) 741-9857 A MINIMUM OF TWO (2) WEEKS PRIOR TO THE PLACEMENT OF PERMANENT PAVEMENT MARKINGS.
13. ALL DAMAGE TO EXISTING PAVEMENT MARKINGS OUTSIDE THE PROPOSED IMPROVEMENTS SHOWN ON THE PLANS SHALL BE REPLACED AT THE CONTRACTOR'S EXPENSE.
14. ACCESS SHALL BE PROVIDED AT ALL TIMES TO PROPERTIES ABUTTING THE PROPOSED IMPROVEMENT.
15. BEFORE BEGINNING ANY WORK, THE CONTRACTOR SHALL RETAIN AND RECORD FOR FUTURE REFERENCE, ALL EXISTING PAVEMENT MARKING LINES (AND RAISED REFLECTIVE MARKERS) IN ORDER THAT THESE LOCATIONS CAN BE RE-ESTABLISHED FOR STRIPING. EXACT LOCATIONS OF ALL PAVEMENT MARKINGS SHALL BE AS DIRECTED BY THE ENGINEER.
16. TEMPORARY FENCE SHOULD BE ERECTED ALONG THE DRIPLINE OF EXISTING TREES TO REMAIN WITHIN THE LIMITS OF CONSTRUCTION. AFTER TREES ARE SAFELY FENCED NOTHING IS TO BE STORED, DRIVEN, OR DISTURBED INSIDE THE FENCE. REMOVE PROTECTIVE TEMPORARY FENCE ONLY AFTER ALL CONSTRUCTION WORK HAS BEEN COMPLETED.
17. THE CONTRACTOR SHALL USE CARE IN GRADING OR EXCAVATING NEAR ANY AND ALL EXISTING ITEMS WHICH WILL NOT BE REMOVED. ANY DAMAGE DONE TO EXISTING ITEMS BY THE CONTRACTOR SHALL BE REPAIRED BY THE CONTRACTOR AT THE CONTRACTOR'S OWN EXPENSE.
18. THE CONTRACTOR SHALL TAKE ALL NECESSARY PRECAUTIONS FOR THE PROTECTION OF EXISTING PLANT MATERIAL FOR WHICH THE CONTRACT DOES NOT PROVIDE REMOVAL. THE PROTECTION OF EXISTING PLANT MATERIAL AND THE REPAIR OR REPLACEMENT OF EXISTING PLANT MATERIAL DAMAGED BY THE CONTRACTOR SHALL BE DONE IN ACCORDANCE WITH THE REQUIREMENTS OF SECTION 201 OF THE STANDARD SPECIFICATIONS.
19. ANY AREA WHERE THERE IS NO PROPOSED GRADING THE EXISTING GROUND COVER SHALL REMAIN.

GENERAL NOTES (CONT'D):

20. THE GENERAL CONTRACTOR IS REQUIRED TO HIRE AN ENVIRONMENTAL FIRM TO CONTINUOUSLY MONITOR FOR WORKER SAFETY AND SOIL CONTAMINATION AT SEVERAL AREAS. SEE SPECIAL PROVISION AND SUPPLEMENTAL SPECIFICATIONS FOR DETAILS.
21. THIS PROJECT REQUIRES A US ARMY CORPS OF ENGINEERS 404 PERMIT. THE PERMIT ISSUED TO THE DEPARTMENT DOES NOT COVER THE IN STREAM WORK BY THE CONTRACTOR. THEREFORE AFTER AWARD, THE CONTRACTOR WILL NEED TO SUBMIT THE WORK PLAN TO THE CORPS. THE CORPS WILL NOT BE PROVIDING AN APPROVAL UNLESS STATED OTHERWISE IN THE PERMIT AND IN STREAM WORK CAN COMMENCE AT THE CONTRACTOR'S DISCRETION. GUIDELINES ON ACCEPTABLE IN STREAM WORK TECHNIQUES CAN BE FOUND ON THE CORPS WEBSITE:
[HTTP://WWW.LRC.USACE.ARMY.MIL/](http://www.lrc.usace.army.mil/)

COMMITMENTS

NONE

FILE NAME = ...\\D160M83-sht-gennotes.dgn



DESIGNED - RJD	REVISED -
DRAWN - GEW	REVISED -
CHECKED - RJD	REVISED -
DATE - 10/4/2011	REVISED -

STATE OF ILLINOIS
DEPARTMENT OF TRANSPORTATION

IL ROUTE 53 OVER ST JOSEPH'S CREEK
INDEX OF SHEETS, STATE STANDARDS,
GENERAL NOTES AND COMMITMENTS

F.A.P. RTE.	SECTION	COUNTY	TOTAL SHEETS	SHEET NO.
870	534R-B	DUPAGE	51	2
CONTRACT NO. 60M83				
[ILLINOIS] FED. AID PROJECT				

SCALE: N/A SHEET NO. 1 OF 1 SHEETS STA. TO STA.

Rev. 4-12-12

SUMMARY OF QUANTITIES

CODED PAY ITEM NUMBER	PAY ITEM	UNIT	TOTAL QUANTITIES	801.FED./201.STATE CONSTRUCTION TYPE CODE	
				ROADWAY 0004	BRIDGE REPLACEMENT 0011
* 20100110	TREE REMOVAL (6 TO 15 UNITS DIAMETER)	UNIT	72	72	
* 20101000	TEMPORARY FENCE	FOOT	86	86	
* 20101200	TREE ROOT PRUNING	EACH	5	5	
* 20101300	TREE PRUNING (1 TO 10 INCH DIAMETER)	EACH	5	5	
* 20101700	SUPPLEMENTAL WATERING	UNIT	1	1	
20200100	EARTH EXCAVATION	CU YD	512	512	
20201200	REMOVAL AND DISPOSAL OF UNSUITABLE MATERIAL	CU YD	266	266	
20300100	CHANNEL EXCAVATION	CU YD	44	44	
20400800	FURNISHED EXCAVATION	CU YD	62	62	
20700220	POROUS GRANULAR EMBANKMENT	CU YD	7		7
20800150	TRENCH BACKFILL	CU YD	27	27	
* 21101615	TOPSOIL FURNISH AND PLACE, 4"	SQ YD	2514	2514	
* 25000210	SEEDING, CLASS 2A	ACRE	0.25	0.25	
* 25000312	SEEDING, CLASS 4A	ACRE	0.50	0.50	
* 25000314	SEEDING, CLASS 4B	ACRE	0.25	0.25	
* 25000400	NITROGEN FERTILIZER NUTRIENT	POUND	12	12	
* 25000600	POTASSIUM FERTILIZER NUTRIENT	POUND	12	12	
* 25100115	MULCH, METHOD 2	ACRE	0.75	0.75	
* 25100630	EROSION CONTROL BLANKET	SQ YD	2514	2514	
* 28000250	TEMPORARY EROSION CONTROL SEEDING	POUND	52	52	
* 28000305	TEMPORARY DITCH CHECKS	FOOT	28	28	
* 28000400	PERIMETER EROSION BARRIER	FOOT	804	804	
* 28000510	INLET FILTERS	EACH	3	3	
28100107	STONE RIPRAP, CLASS A4	SQ YD	697		697
28200200	FILTER FABRIC	SQ YD	697		697

* INDICATES SPECIALTY ITEMS

CODED PAY ITEM NUMBER	PAY ITEM	UNIT	TOTAL QUANTITIES	801.FED./201.STATE CONSTRUCTION TYPE CODE	
				ROADWAY 0004	BRIDGE REPLACEMENT 0011
31101400	SUBBASE GRANULAR MATERIAL, TYPE B 6"	SQ YD	497	497	
35501317	HOT-MIX ASPHALT BASE COURSE, 8 1/4"	SQ YD	680	680	
40600100	BITUMINOUS MATERIALS (PRIME COAT)	GALLON	469	469	
40600300	AGGREGATE (PRIME COAT)	TON	8	8	
40600635	LEVELING BINDER (MACHINE METHOD), N70	TON	131	131	
40600895	CONSTRUCTING TEST STRIP	EACH	1	1	
40603240	POLYMERIZED HOT-MIX ASPHALT BINDER COURSE, IL-19.0, N90	TON	280	280	
40603595	POLYMERIZED HOT-MIX ASPHALT SURFACE COURSE, MIX "F", N90	TON	227	227	
42400200	PORTLAND CEMENT CONCRETE SIDEWALK 5 INCH	SQ FT	1607	1607	
44000100	PAVEMENT REMOVAL	SQ YD	787	787	
44000157	HOT-MIX ASPHALT SURFACE REMOVAL, 2"	SQ YD	1231	1231	
44000500	COMBINATION CURB AND GUTTER REMOVAL	FOOT	833	833	
44000600	SIDEWALK REMOVAL	SQ FT	1416	1416	
44003100	MEDIAN REMOVAL	SQ FT	2328	2328	
50100100	REMOVAL OF EXISTING STRUCTURES	EACH	1		1
50104400	CONCRETE HEADWALL REMOVAL	EACH	2	2	
50200100	STRUCTURE EXCAVATION	CU YD	362		362
50300225	CONCRETE STRUCTURES	CU YD	228.5		228.5
50300255	CONCRETE SUPERSTRUCTURE	CU YD	10.5		10.5
50300300	PROTECTIVE COAT	SQ YD	59		59
50800105	REINFORCEMENT BARS	POUND	17300		17300
50800205	REINFORCEMENT BARS, EPOXY COATED	POUND	9550		9550
50800515	BAR SPLICERS	EACH	84		84
50900105	ALUMINUM RAILING, TYPE L	FOOT	49		49
51500100	NAME PLATES	EACH	1		1

* INDICATES SPECIALTY ITEMS

FILE NAME = ...N160M83-sht-S001-PostFinal.dgn



DESIGNED - RJD	REVISED -
DRAWN - GEW	REVISED -
CHECKED - RJD	REVISED -
DATE - 12/12/2011	REVISED -

**STATE OF ILLINOIS
DEPARTMENT OF TRANSPORTATION**

**IL ROUTE 53 OVER ST JOSEPH'S CREEK
SUMMARY OF QUANTITIES**

SCALE: N/A SHEET NO. 1 OF 3 SHEETS STA. TO STA.

F.A.P. RTE. 870	SECTION 534R-B	COUNTY DuPAGE	TOTAL SHEETS 51	SHEET NO. 3
ILLINOIS FED. AID PROJECT			CONTRACT NO. 60M83	

Rev. 4.12.12

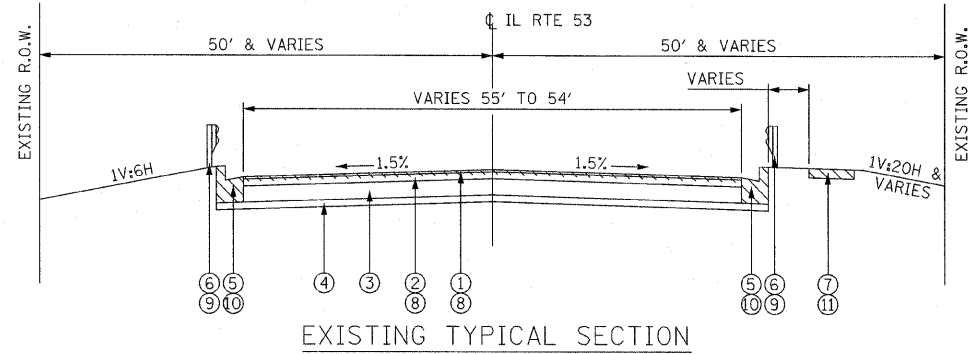
SUMMARY OF QUANTITIES

001.FED./201.STATE

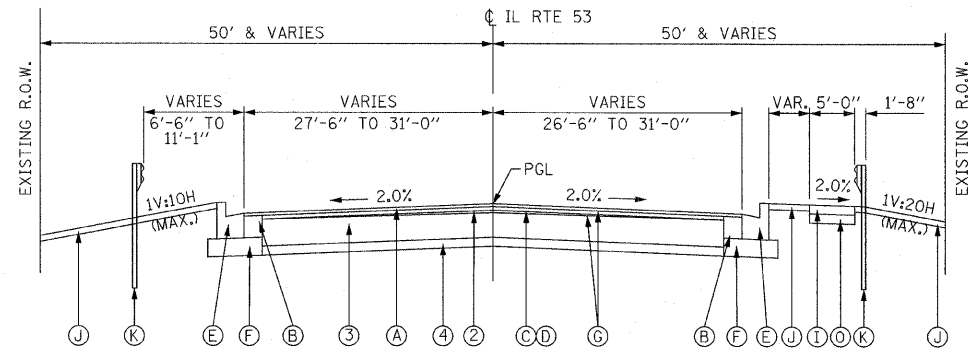
CODED PAY ITEM NUMBER	PAY ITEM	UNIT	TOTAL QUANTITIES	CONSTRUCTION TYPE CODE	
				ROADWAY 0004	BRIDGE REPLACEMENT 0011
* 87300925	ELECTRIC CABLE IN CONDUIT, TRACER, NO. 14 1C	FOOT	2378	2378	
* 87301305	ELECTRIC CABLE IN CONDUIT, LEAD-IN, NO. 14 1 PAIR	FOOT	328	328	
* 87900200	DRILL EXISTING HANDHOLE	EACH	2	2	
* 88600100	DETECTOR LOOP, TYPE I	FOOT	163	163	
* 89000100	TEMPORARY TRAFFIC SIGNAL INSTALLATION	EACH	1	1	
* 89502300	REMOVE ELECTRIC CABLE FROM CONDUIT	FOOT	2056	2056	
* A2002016	TREE, AESCULUS GLABRA (OHIO BUCKEYE), 2" CALIPER, BALLED AND BURLAPPED	EACH	12	12	
X0324719	CHECK VALVE 18"	EACH	1	1	
* X2502014	SEEDING, CLASS 4A (MODIFIED)	ACRE	0.50	0.50	
X7010216	TRAFFIC CONTROL AND PROTECTION, (SPECIAL)	L SUM	1	1	
X7030030	WET REFLECTIVE TEMPORARY TAPE TYPE III, 4 INCH	FOOT	7831	7831	
X7030055	WET REFLECTIVE TEMPORARY TAPE TYPE III, 24 INCH	FOOT	52	52	
<u>303.00112</u>	<u>AGGREGATE SUBGRADE IMPROVEMENT, 12"</u>	SQ YD	774	774	
Z0004552	APPROACH SLAB REMOVAL	SQ YD	352	352	
Z0013798	CONSTRUCTION LAYOUT	L SUM	1	1	
Z0028462	GEOTEXTILE RETAINING WALL	SQ FT	115		115
Z0030250	IMPACT ATTENUATORS, TEMPORARY (NON-REDIRECTIVE), TEST LEVEL 3	EACH	2	2	
Z0030350	IMPACT ATTENUATORS, RELOCATE (NON-REDIRECTIVE), TEST LEVEL 3	EACH	2	2	
Z0030850	TEMPORARY INFORMATION SIGNING	SQ FT	52	52	
Z0062456	TEMPORARY PAVEMENT	SQ YD	357	357	
Z0073002	TEMPORARY SOIL RETENTION SYSTEM	SQ FT	444		444
* Z0073510	TEMPORARY TRAFFIC SIGNAL TIMING	EACH	1	1	
Z0038137	THREE-SIDED PRECAST CONCRETE STRUCTURES 28'X 10'	FOOT	83.3		83.3

* INDICATES SPECIALTY ITEMS

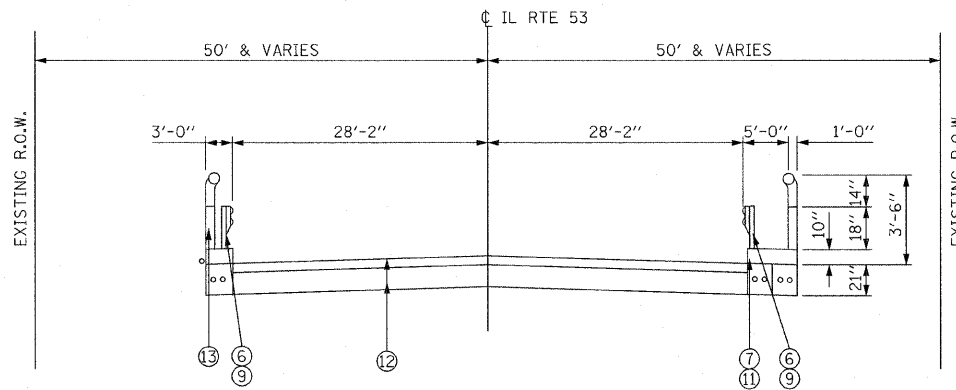
Rev. 4-12-12



STA. 98+63 TO STA. 99+84
STA. 100+16 TO STA. 101+65

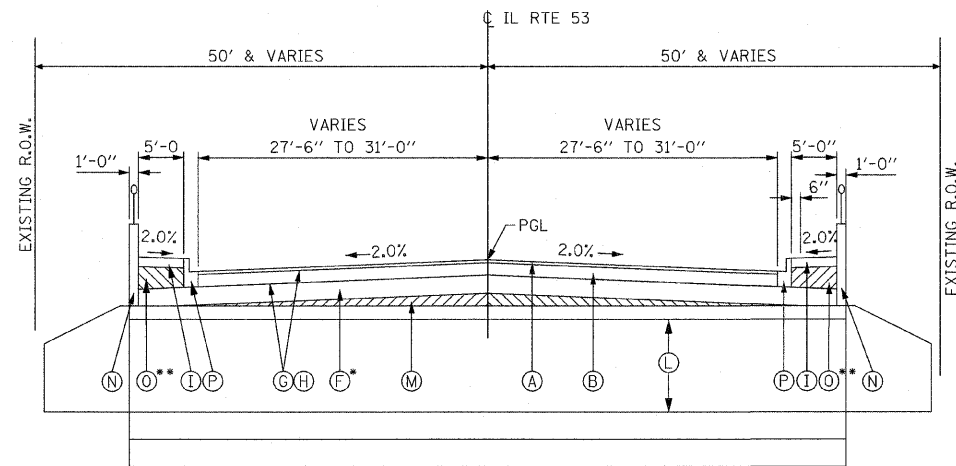


STA. 98+63 TO STA. 99+55.30
STA. 100+45 TO STA. 101+65



EXISTING TYPICAL SECTION

STA. 99+84 TO STA. 100+16



PROPOSED TYPICAL SECTION

STA. 99+55.30 TO STA. 100+45

LEGEND

EXISTING CONDITIONS

- ① HMA SURFACE COURSE, 1 1/2"
- ② HMA BINDER COURSE, 3"
- ③ HMA BASE COURSE, 11"
- ④ AGGREGATE BASE
- ⑤ CURB & GUTTER TYPE B-6. 12
- ⑥ STEEL PLATE BEAM GUARDRAIL
- ⑦ P.C.C SIDEWALK
- ⑧ HMA SURFACE REMOVAL 2"
- ⑨ GUARDRAIL REMOVAL
- ⑩ COMBINATION CURB AND GUTTER REMOVAL
- ⑪ SIDEWALK REMOVAL
- ⑫ CONCRETE BRIDGE STRUCTURE
- ⑬ P.C.C PARAPET WALL

PROPOSED CONDITIONS

- Ⓐ POLYMERIZED HMA SURFACE COURSE, MIX "F", N90 2"
- Ⓑ HMA BASE COURSE (HMA BINDER COURSE, IL-19.0, N90) 8 1/4"
- Ⓒ LEVELING BINDER (MACHINE METHOD), N70 (3/4"-2 1/4") (IN TWO LIFTS)
- Ⓓ POLYMERIZED HMA BINDER COURSE, IL-19.0, N90 (2 1/4"-5 1/2") (IN TWO LIFTS)
- Ⓔ COMBINATION CURB & GUTTER TYPE B-6.12
- Ⓕ AGGREGATE SUBGRADE IMPROVEMENT 12"
- Ⓖ BITUMINOUS MATERIALS (PRIME COAT)
- Ⓗ AGGREGATE (PRIME COAT)
- Ⓘ P.C.C. SIDEWALK 5"
- Ⓙ PARKWAY RESTORATION: EROSION CONTROL BLANKET SEEDING, CLASS 2A OR CLASS 4A (MODIFIED), (SEE PLANS) TOPSOIL FURNISH AND PLACE, 4"
- Ⓚ STEEL PLATE BEAM GUARDRAIL, TYPE A, 6 FOOT POST
- Ⓛ THREE SIDED PRECAST CONCRETE STRUCTURE 28' X 10'
- Ⓜ POROUS GRANULAR EMBANKMENT, SUBGRADE
- Ⓝ PARAPET AND ALUMINUM RAILING, TYPE L
- Ⓞ SUBBASE GRANULAR MATERIAL, TYPE B 6"
- Ⓟ COMBINATION CURB & GUTTER TYPE B-8.12

HOT-MIX ASPHALT MIXTURE REQUIREMENTS	
MIXTURE TYPE	AIR VOIDS
HMA SURFACE COURSE	
POLYMERIZED HMA SURFACE COURSE, MIX "F", N90 (IL-9.5mm) 2"	4% @ 90 Gyr.
HMA BINDER COURSE	
HMA BASE COURSE (HMA BINDER COURSE, IL-19.0, N90) 8 1/4"	4% @ 90 Gyr.
LEVELING BINDER	
LEVELING BINDER (MACHINE METHOD), N70 (IL-9.5mm) 3/4"- 2 1/4"	4% @ 70 Gyr.
POLYMERIZED HMA BINDER COURSE, IL-19.0, N90 2 1/4"- 5 1/2"	4% @ 90 Gyr.
MEDIAN	
HMA SURFACE COURSE, MIX "D", N50 4" (IL-9.5mm)	4% @ 50 Gyr.
TEMPORARY PAVEMENT	
HMA SURFACE COURSE, MIX "D", N50 (IL-9.5mm) 2"	4% @ 50 Gyr.
HMA BINDER, IL-19mm, N50 8"	4% @ 50 Gyr.
IF THE CONTRACTOR CHOOSES TO USE CONCRETE FOR THE TEMPORARY PAVEMENT THE THICKNESS SHALL BE 10".	
THE UNIT WEIGHT USED TO CALCULATE ALL HMA SURFACE MIXTURE QUANTITIES IS: 112 LBS/SQ YD/IN.	
The "AC Type" for Polymerized HMA Mixes SHALL BE "SBS/SBR PG 70 -22" AND FOR NON-POLYMERIZED HMA THE "AC TYPE" shall be "PG 64 -22" UNLESS modified by District ONE Special Provisions.	
FOR "PERCENT OF RAP/RAS" SEE DISTRICT ONE SPECIAL PROVISIONS.	

- ⚠️ * AGGREGATE SUBGRADE IMPROVEMENT MAY VARY FROM 12" OVER THE PROPOSED THREE-SIDED STRUCTURE.
- ** ANY VARIANCE IN THICKNESS OF SUBBASE GRANULAR MATERIAL, TYPE B 6" OVER THE PROPOSED THREE-SIDED STRUCTURE WILL BE INCIDENTAL TO SUBBASE GRANULAR MATERIAL, TYPE B 6".

FILE NAME = ...\\DIGM83-sht-typical.dgn



DESIGNED - ADW	REVISED - ⚠️ 3/27/2012 JRB
DRAWN - GEW	REVISED -
CHECKED - RJD	REVISED -
DATE - 12/12/2011	REVISED -



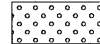



STATE OF ILLINOIS
DEPARTMENT OF TRANSPORTATION

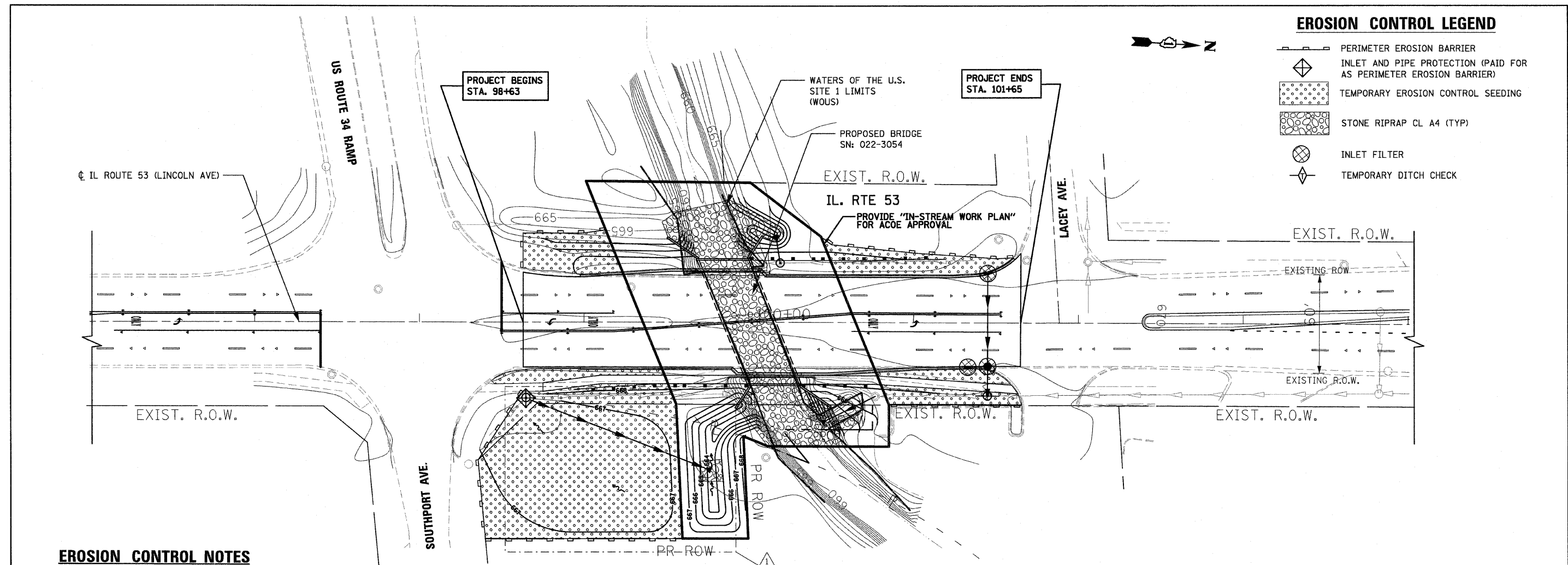
IL ROUTE 53 OVER ST JOSEPH'S CREEK
EXISTING AND PROPOSED TYPICAL SECTIONS

F.A.P. RTE. 870	SECTION 534R-B	COUNTY DuPAGE	TOTAL SHEETS 51	SHEET NO. 7
CONTRACT NO. 60M83				
ILLINOIS FED. AID PROJECT				

SCALE: NTS SHEET NO. 1 OF 1 SHEETS STA. TO STA.


EROSION CONTROL LEGEND

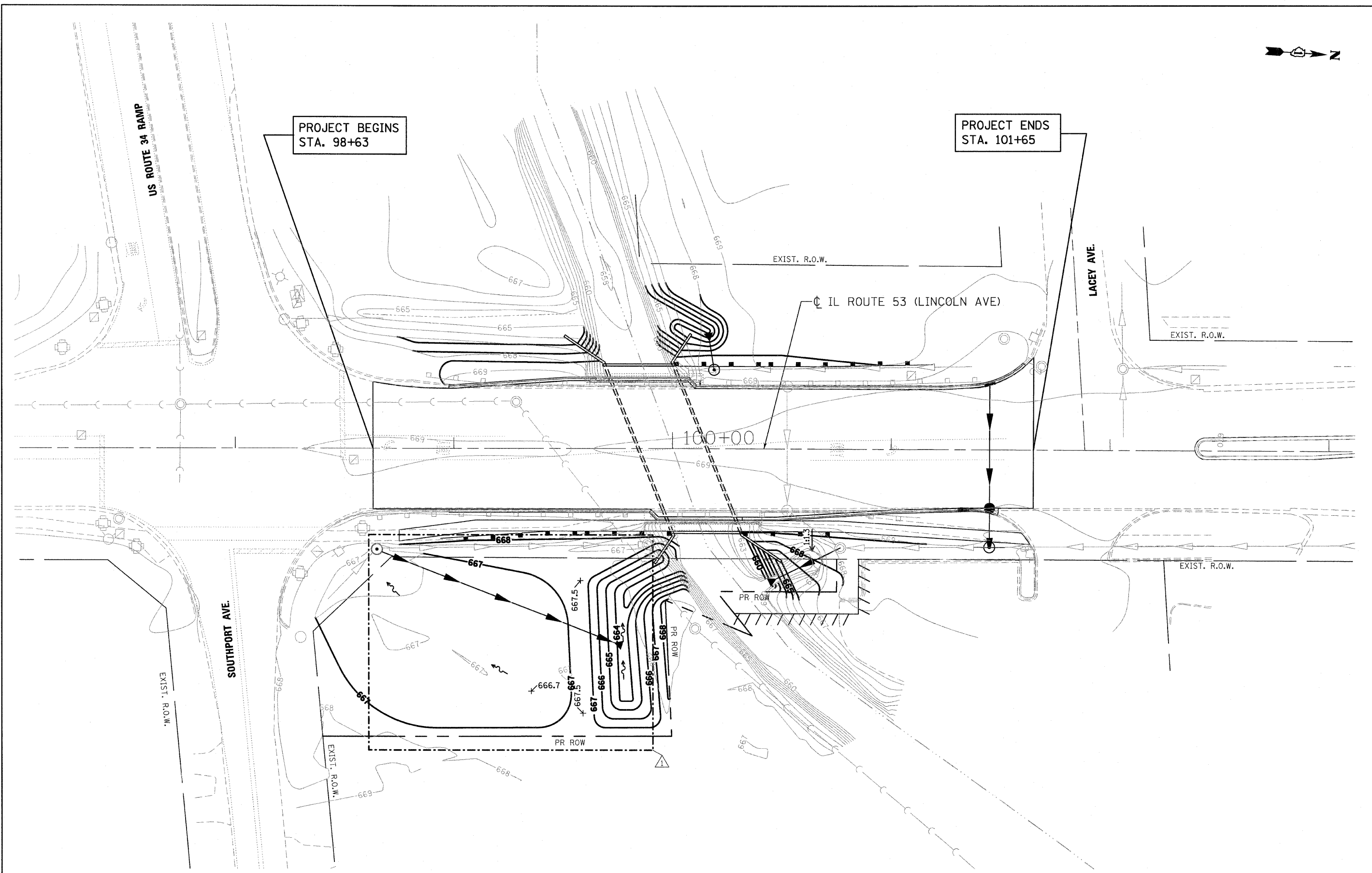
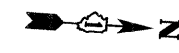
-  PERIMETER EROSION BARRIER
-  INLET AND PIPE PROTECTION (PAID FOR AS PERIMETER EROSION BARRIER)
-  TEMPORARY EROSION CONTROL SEEDING
-  STONE RIPRAP CL A4 (TYP)
-  INLET FILTER
-  TEMPORARY DITCH CHECK



EROSION CONTROL NOTES

1. THE EROSION CONTROL MEASURES INDICATED ON THE PLANS ARE THE MINIMUM REQUIREMENTS. ADDITIONAL MEASURES MAY BE REQUIRED, AS DIRECTED BY THE ENGINEER.
2. THE CONTRACTOR SHALL TAKE ALL PRECAUTIONS TO PREVENT POLLUTION OF STORM WATER AND SHALL FOLLOW IEPA & IDOT CONSTRUCTION MEMORANDUM NO. 02-60.
3. ALL VEGETATIVE AND STRUCTURAL EROSION CONTROL PRACTICES SHALL BE CONSTRUCTED AND MAINTAINED IN ACCORDANCE WITH THE MINIMUM STANDARDS AND SPECIFICATIONS OF THE "ILLINOIS PROCEDURES AND STANDARDS FOR URBAN SOIL EROSION AND SEDIMENTATION CONTROL" AND THE "STANDARDS AND SPECIFICATIONS FOR SOIL EROSION AND SEDIMENT CONTROL" OF THE ILLINOIS ENVIRONMENTAL PROTECTION AGENCY.
4. SOIL DISTURBANCE SHALL BE CONDUCTED IN SUCH A MANNER AS TO MINIMIZE EROSION. SOIL STABILIZATION MEASURES SHALL CONSIDER THE TIME OF YEAR, SITE CONDITIONS AND THE USE OF TEMPORARY OR PERMANENT MEASURES.
5. THE MAINTENANCE AND REPAIR OR REPLACEMENT OF EROSION CONTROL ITEMS, WHEN DIRECTED BY THE ENGINEER, WILL NOT BE PAID FOR SEPARATELY, BUT SHALL BE INCLUDED IN THE COST OF THE ASSOCIATED PAY ITEMS.
6. ALL STORM SEWER FACILITIES THAT ARE OR WILL BE FUNCTIONING DURING CONSTRUCTION SHALL BE PROTECTED, FILTERED OR OTHERWISE TREATED TO REMOVE SEDIMENT. MUD AND SEDIMENT DEPOSITS SHALL BE REMOVED FROM THE ROADWAY AT THE END OF EACH WORK DAY BY SHOVELING AND/OR SWEEPING.
7. INLET FILTERS SHALL BE PLACED ON ALL CATCH BASINS, INLETS, AND MANHOLES WITH OPEN GRATES.
8. THE CONTRACTOR SHALL APPLY TEMPORARY EROSION CONTROL SEEDING TO ALL ERODIBLE BARE EARTH AREAS EVERY 7 DAYS AFTER THE EARTH IS EXPOSED. APPLICATION RATE USED: 100 LB/ACRE
9. BROADCASTING OF THE SEED BY MACHINE, HAND METHODS, HYDRAULIC SEEDING OR OTHER METHODS APPROVED BY THE ENGINEER WILL BE ALLOWED FOR TEMPORARY EROSION CONTROL SEEDING.
10. TOPSOIL AND FERTILIZER NUTRIENTS ARE NOT REQUIRED FOR TEMPORARY EROSION CONTROL SEEDING.
11. SEED BED PREPARATION WILL NOT BE REQUIRED FOR TEMPORARY EROSION CONTROL SEEDING IF THE SOIL IS IN A LOOSE CONDITION. LIGHT DISKING SHALL BE DONE IF THE SOIL IS HARD PACKED OR CAKED.
12. MULCH WILL NOT BE REQUIRED AFTER TEMPORARY EROSION CONTROL SEEDING HAS BEEN COMPLETED ON AREAS WITH SLOPES FLATTER THAN 1:3 (V:H) THAT ARE TEMPORARY SEEDED BEFORE NOVEMBER 2.
13. MULCH, METHOD 2 (PROCEDURE 2) SHALL BE PLACED IN ACCORDANCE WITH THE REQUIREMENT OF THE STANDARD SPECIFICATIONS AFTER TEMPORARY EROSION CONTROL SEEDING HAS BEEN COMPLETED ON AREAS WITH SLOPES STEEPER THAN 1:3 (V:H) THAT ARE TEMPORARY SEEDED BEFORE NOVEMBER 2.
14. EROSION CONTROL BLANKET SHALL BE PLACED IN ACCORDANCE WITH THE REQUIREMENTS OF THE STANDARD SPECIFICATIONS AFTER TEMPORARY EROSION CONTROL SEEDING HAS BEEN COMPLETED ON ALL AREAS THAT ARE TEMPORARY SEEDED ON OR AFTER NOVEMBER 2.
15. ALL PERIMETER EROSION BARRIER SHALL BE INSTALLED WITHIN THE TEMPORARY EASEMENT, PROPOSED RIGHT-OF-WAY OR EXISTING RIGHT-OF-WAY.
16. EROSION CONTROL ITEMS ARE CONSIDERED TO BE HIGH PRIORITY ITEMS ON THIS CONTRACT. THE ENGINEER WILL IMPLEMENT ALL PROVISIONS OF THE SPECIFICATION NECESSARY TO ASSURE THAT EROSION CONTROL ITEMS ARE CONSTRUCTED AND MAINTAINED IN A TIMELY WAY. ALL EROSION CONTROL MEASURES SHALL BE INSTALLED PRIOR TO BEGINNING ANY CONSTRUCTION ACTIVITIES WHICH WILL POTENTIALLY CREATE ERODABLE CONDITIONS.
17. THE CONTRACTOR SHALL INSTALL PERIMETER EROSION BARRIER PRIOR TO STRIPPING VEGETATION.
18. TEMPORARY DITCH CHECKS AND INLET AND PIPE PROTECTION SHALL BE INSTALLED IMMEDIATELY AFTER DISTURBANCE.
19. THE CONTRACTOR SHALL MAINTAIN ALL EROSION CONTROL DEVICES AT ALL TIMES. EROSION CONTROL DEVICES SHALL BE INSPECTED AT LEAST ONCE EVERY SEVEN (7) CALENDAR DAYS AND WITHIN TWENTY-FOUR (24) HOURS OF THE END OF A STORM THAT IS 0.5 INCHES OR GREATER, OR EQUIVALENT SNOWFALL. ADDITIONALLY, DURING WINTER MONTHS, MEASURES SHOULD BE INSPECTED AFTER SIGNIFICANT SNOWMELTS.
20. THE IDOT EROSION AND SEDIMENT CONTROL FIELD GUIDE FOR CONSTRUCTION INSPECTION AND THE ILLINOIS URBAN MANUAL, PRACTICE STANDARD, DEWATERING CODE 813 SHALL BE FOLLOWED WHEN DEWATERING THE CONSTRUCTION SITE.
21. THE CONTRACTOR SHALL ADDRESS ALL EROSION CONTROLS COMMENTS/MAINTENANCE REQUESTS BY THE ENGINEER WITH A 24 HOURS NOTIFICATION TIME FRAME FROM THE TIME OF RECEIPT OF COMMENTS BY THE ENGINEER.
22. THE CONTRACTOR WILL PROVIDE AN IN-STREAM WORK PLAN FOR REVIEW BY THE ENGINEER, AND WRITTEN APPROVAL BY THE USACE, PRIOR TO STARTING ANY WORK WITHIN THE IN-STREAM WORK AREA.
23. THE USE OF HAY OR STRAW BALES FOR ANY EROSION AND SEDIMENT CONTROL MEASURES IS NOT PERMITTED.
24. J-HOOKS PER IDOT STANDARD 280001 SHALL BE INSTALLED DURING THE INSTALLATION OF THE PERIMETER EROSION BARRIER WHERE NEEDED.
25. PERMANENT SEEDING AND EROSION CONTROL BLANKET SHALL BE INSTALLED ON ALL DISTURBED AREAS IMMEDIATELY FOLLOWING FINAL GRADING
26. STOCKPILES OF SOIL AND OTHER ERODIBLE MATERIALS TO REMAIN IN PLACE MORE THAN THREE (3) DAYS SHALL BE FURNISHED WITH EROSION AND SEDIMENT CONTROL MEASURES (I.E. PERIMETER EROSION BARRIER). STOCKPILES TO REMAIN IN PLACE FOR 7 DAYS OR MORE SHALL RECEIVE TEMPORARY SEEDING.
27. IF DEWATERING SERVICES ARE USED, ADJOINING PROPERTIES AND DISCHARGE LOCATIONS SHALL BE PROTECTED FROM EROSION. DISCHARGE SHALL BE ROUTED THROUGH AN EFFECTIVE SEDIMENT CONTROL MEASURE (I.E. SEDIMENT TRAP, SEDIMENT BASIN, OR OTHER APPROPRIATE MEASURE).

FILE NAME = ...\\D:\6M83-sht-eros.dgn		DESIGNED - SEF	REVISED - 12/6/2011 N.W.S.	STATE OF ILLINOIS DEPARTMENT OF TRANSPORTATION	IL ROUTE 53 OVER ST JOSEPH'S CREEK		F.A.P. RTE.	SECTION	COUNTY	TOTAL SHEETS	SHEET NO.
		DRAWN - GEW	REVISED - 1/27/2012 N.W.S.		870	534R-B	DuPAGE	51	14		
CHECKED - RJD	REVISED - 3/27/2012 JRB	EROSION CONTROL PLAN			CONTRACT NO. 60M83						
DATE - 12/12/2011	REVISED -	SCALE: 1" = 30'	SHEET NO. 1 OF 1 SHEETS		STA.	TO STA.	ILLINOIS FED. AID PROJECT				



FILE NAME =
 ...NDIGM83-sht-creek_grading.dgn



DESIGNED - SEF
 DRAWN - GEW
 CHECKED - RJD
 DATE - 12/12/2011

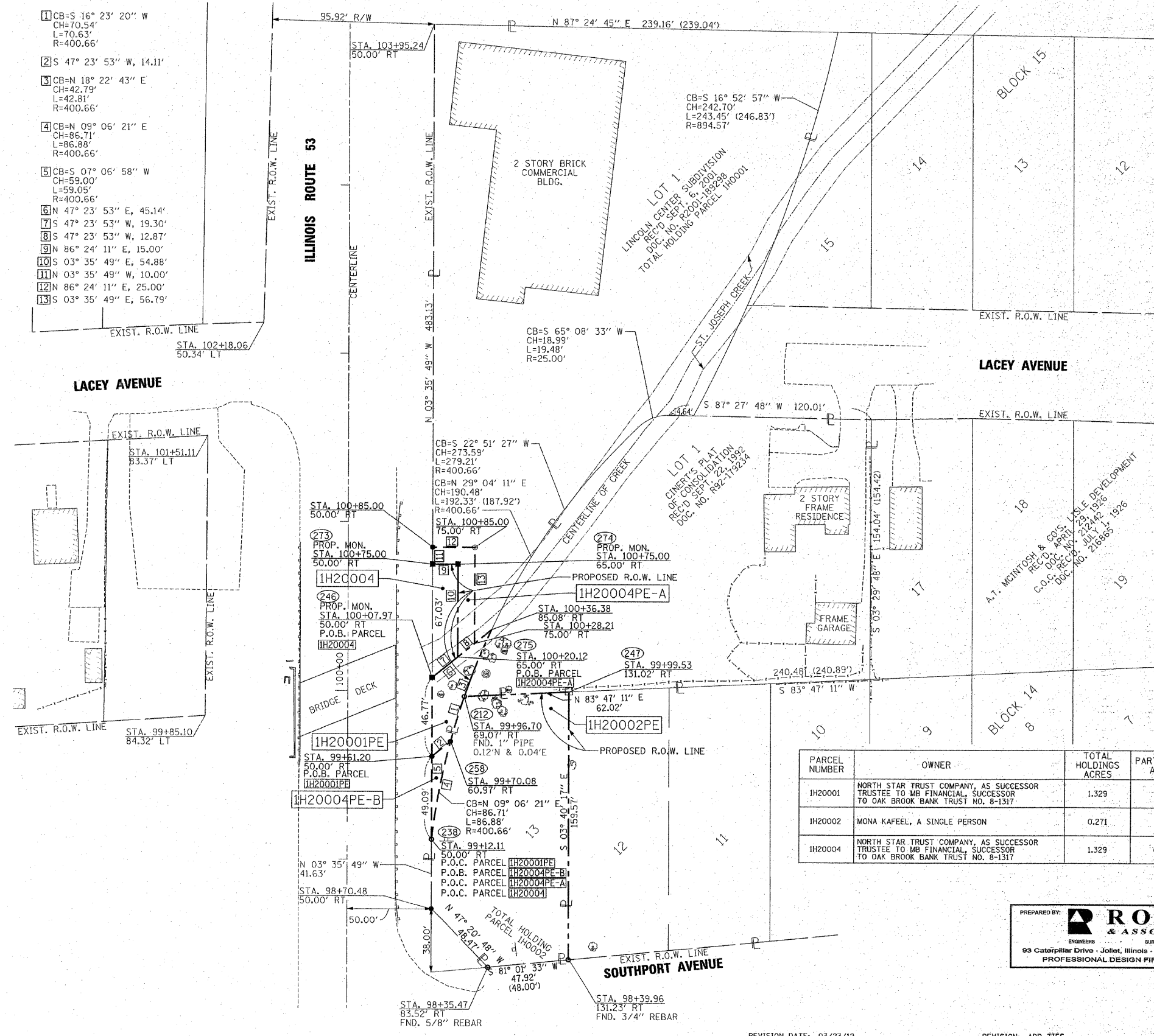
REVISED - 12/6/2011 N.W.S.
 REVISED - 3/27/2012 JRB
 REVISED -
 REVISED -

STATE OF ILLINOIS
 DEPARTMENT OF TRANSPORTATION

IL ROUTE 53 OVER ST JOSEPH'S CREEK
 CREEK GRADING AND COMPENSATORY STORAGE PLAN
 SCALE: 1"=20'
 SHEET NO. 1 OF 1 SHEETS STA. TO STA.

F.A.P. RTE.	SECTION	COUNTY	TOTAL SHEETS	SHEET NO.
870	534R-B	DuPAGE	51	16
CONTRACT NO. 60M83				
ILLINOIS FED. AID PROJECT				

PART OF SOUTHEAST QUARTER SECTION 3, TWP. 38N., R.10E. OF THE 3RD. P.M., IN DUPAGE COUNTY, ILLINOIS.



- 1 CB-S 16° 23' 20" W
CH=70.54'
L=70.63'
R=400.66'
- 2 S 47° 23' 53" W, 14.11'
- 3 CB-N 18° 22' 43" E
CH=42.79'
L=42.81'
R=400.66'
- 4 CB-N 09° 06' 21" E
CH=86.71'
L=86.88'
R=400.66'
- 5 CB-S 07° 06' 58" W
CH=59.00'
L=59.05'
R=400.66'
- 6 N 47° 23' 53" E, 45.14'
- 7 S 47° 23' 53" W, 19.30'
- 8 S 47° 23' 53" W, 12.87'
- 9 N 86° 24' 11" E, 15.00'
- 10 S 03° 35' 49" E, 54.88'
- 11 N 03° 35' 49" W, 10.00'
- 12 N 86° 24' 11" E, 25.00'
- 13 S 03° 35' 49" E, 56.79'

LEGEND

- SECTION CORNER
- QUARTER SECTION CORNER
- SECTION LINE
- QUARTER SECTION LINE
- QUARTER QUARTER SECTION LINE
- PLATTED LOT LINES
- PROPERTY (DEED) LINE
- APPEARANT PROPERTY LINE
- CENTERLINE
- EXISTING RIGHT OF WAY LINE
- PROPOSED RIGHT OF WAY LINE
- PROPOSED EASEMENT
- MEASURED DIMENSION
- COMPUTED DIMENSION
- RECORDED DIMENSION
- EXISTING BUILDING

Bearings are referenced to the Illinois Coordinate System, NAD83, East Zone, as provided by the Illinois Department of Transportation.

IRON PIPE OR ROD FOUND: "MAG" NAIL SET:
 CUT CROSS FOUND OR SET: 5/8" REBAR SET:

T1, T2, T3: THESE STAKES REFERENCE FOUND OR SET MONUMENTATION. SET 5/8 INCH IRON ROD FLUSH WITH GROUND TO THE FOUND IRON STAKE IDENTIFIED BY COLORED PLASTIC CAP BEARING SURVEYORS REGISTRATION NUMBER.

BT1, BT2, BT3: THESE STAKES IN CULTIVATED AREAS REFERENCE FOUND OR SET MONUMENTATION. BURIED 5/8 INCH IRON ROD 20 INCHES BELOW GROUND TO THE FOUND IRON STAKE. IDENTIFIED BY COLORED PLASTIC CAP BEARING SURVEYORS REGISTRATION NUMBER.

M: STAKING OF PROPOSED RIGHT OF WAY. SET DIVISION OF HIGHWAYS SURVEY MARKER TO MONUMENT THE POSITION SHOWN. IDENTIFIED BY INSCRIPTION DATA AND SURVEYORS REGISTRATION NUMBER.

N: STAKING OF PROPOSED RIGHT OF WAY IN CULTIVATED AREAS. BURIED 5/8 INCH METAL ROD 20 INCHES BELOW GROUND TO MARK FUTURE SURVEY MARKER POSITION IDENTIFIED BY COLORED PLASTIC CAP BEARING SURVEYORS REGISTRATION NUMBER.

PERMANENT SURVEY MARKER, I.D.O.T. STANDARD #2135 (TO BE SET BY OTHERS)

RIGHT OF WAY STAKING PROPOSED TO BE SET

STATE OF ILLINOIS
COUNTY OF WILL

THIS IS TO CERTIFY THAT I, ROBERT A. ROGINA, AN ILLINOIS PROFESSIONAL LAND SURVEYOR, HAVE SURVEYED THE PLAT OF HIGHWAYS SHOWN HEREON IN SECTION 3, TOWNSHIP 38 NORTH, RANGE 10 EAST OF THE THIRD PRINCIPAL MERIDIAN, DUPAGE COUNTY, THAT THE SURVEY IS TRUE AND COMPLETE AS SHOWN TO THE BEST OF MY KNOWLEDGE AND BELIEF, THAT THE PLAT CORRECTLY REPRESENTS SAID SURVEY, THAT ALL MONUMENTS FOUND AND ESTABLISHED ARE OF PERMANENT QUALITY AND OCCUPY THE POSITIONS SHOWN THEREON AND THAT THE MONUMENTS ARE SUFFICIENT TO ENABLE THE SURVEY TO BE RETRACED, MADE FOR THE DEPARTMENT OF TRANSPORTATION, STATE OF ILLINOIS.

DATED AT JOLIET, ILLINOIS THIS 23RD DAY OF March, A.D. 2012

ILLINOIS PROFESSIONAL LAND SURVEYOR NO. 2017
LICENSE EXPIRATION DATE: 11/30/2012

SHEET ONE IS A COVER PAGE AND IS NOT RECORDED

THIS PROFESSIONAL SERVICE CONFORMS TO THE CURRENT ILLINOIS MINIMUM STANDARDS FOR A BOUNDARY SURVEY.



PARCEL NUMBER	OWNER	TOTAL HOLDINGS ACRES	PART TAKEN ACRES	REMAINDER ACRES	PREVIOUSLY DED. ACRES	EASEMENT ACRES	EASEMENT PURPOSE	PERMANENT ID. NO.	PROPERTY ACQUIRED BY
IH20001	NORTH STAR TRUST COMPANY, AS SUCCESSOR TRUSTEE TO MB FINANCIAL, SUCCESSOR TO OAK BROOK BANK TRUST NO. 8-1317	1.329	N/A	1.329	N/A	0.023	COMPENSATORY STORAGE	08-03-408-009	
IH20002	MONA KAFEEL, A SINGLE PERSON	0.271	N/A	0.271	N/A	0.271	COMPENSATORY STORAGE	08-03-415-009	
IH20004	NORTH STAR TRUST COMPANY, AS SUCCESSOR TRUSTEE TO MB FINANCIAL, SUCCESSOR TO OAK BROOK BANK TRUST NO. 8-1317	1.329	0.021	1.308	N/A	A = 0.017 B = 0.005 226 SQ.FT.	COMPENSATORY STORAGE	08-03-408-009	

PREPARED BY: **ROGINA & ASSOCIATES, LTD.**
 ENGINEERS SURVEYORS PLANNERS
 93 Caterpillar Drive, Joliet, Illinois - 815/729-0777 - FAX 815/729-0782
 PROFESSIONAL DESIGN FIRM LICENSE NO. 184-001106

RECEIVED
MAR 23 2012
PLATS & LEGALS

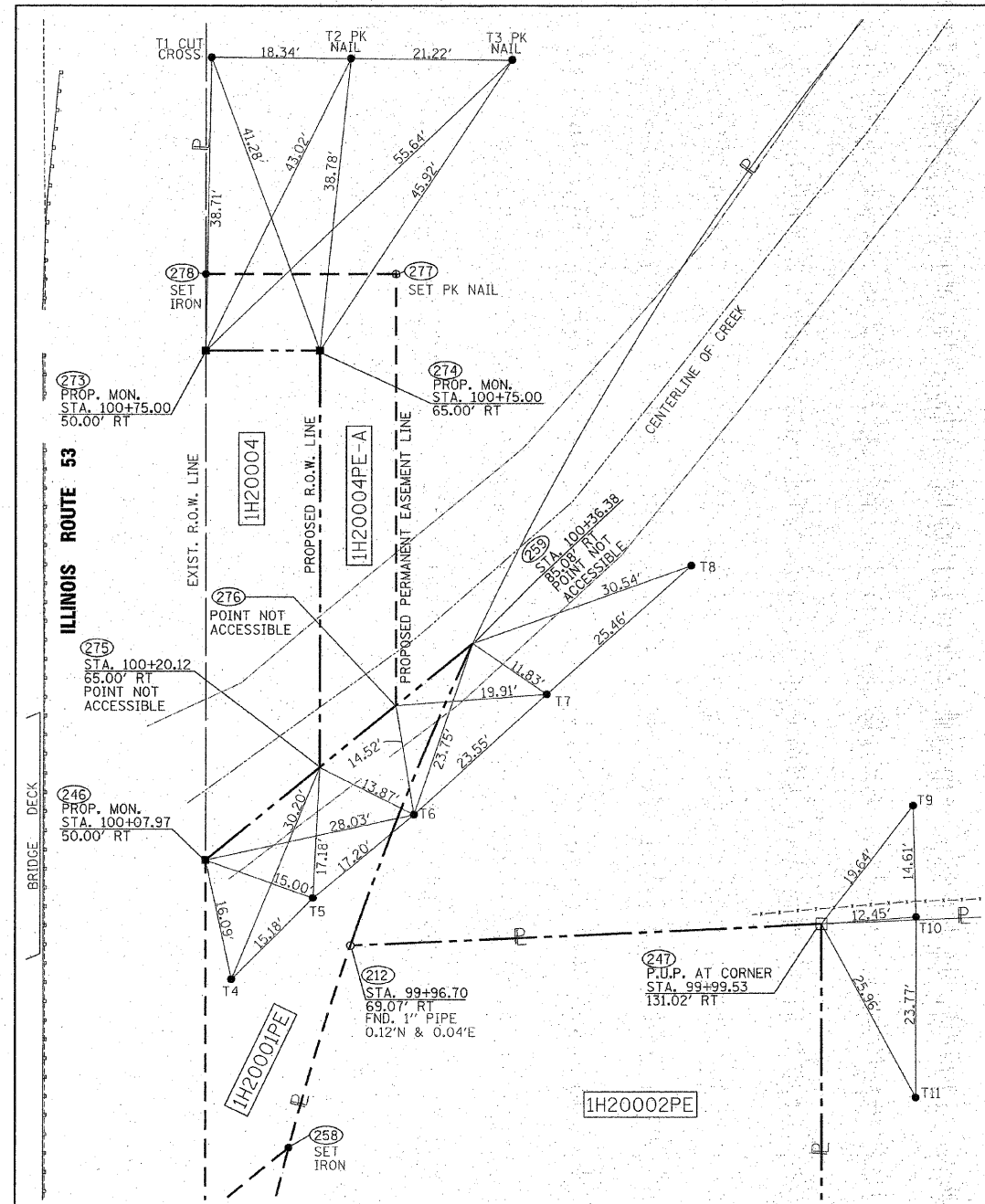
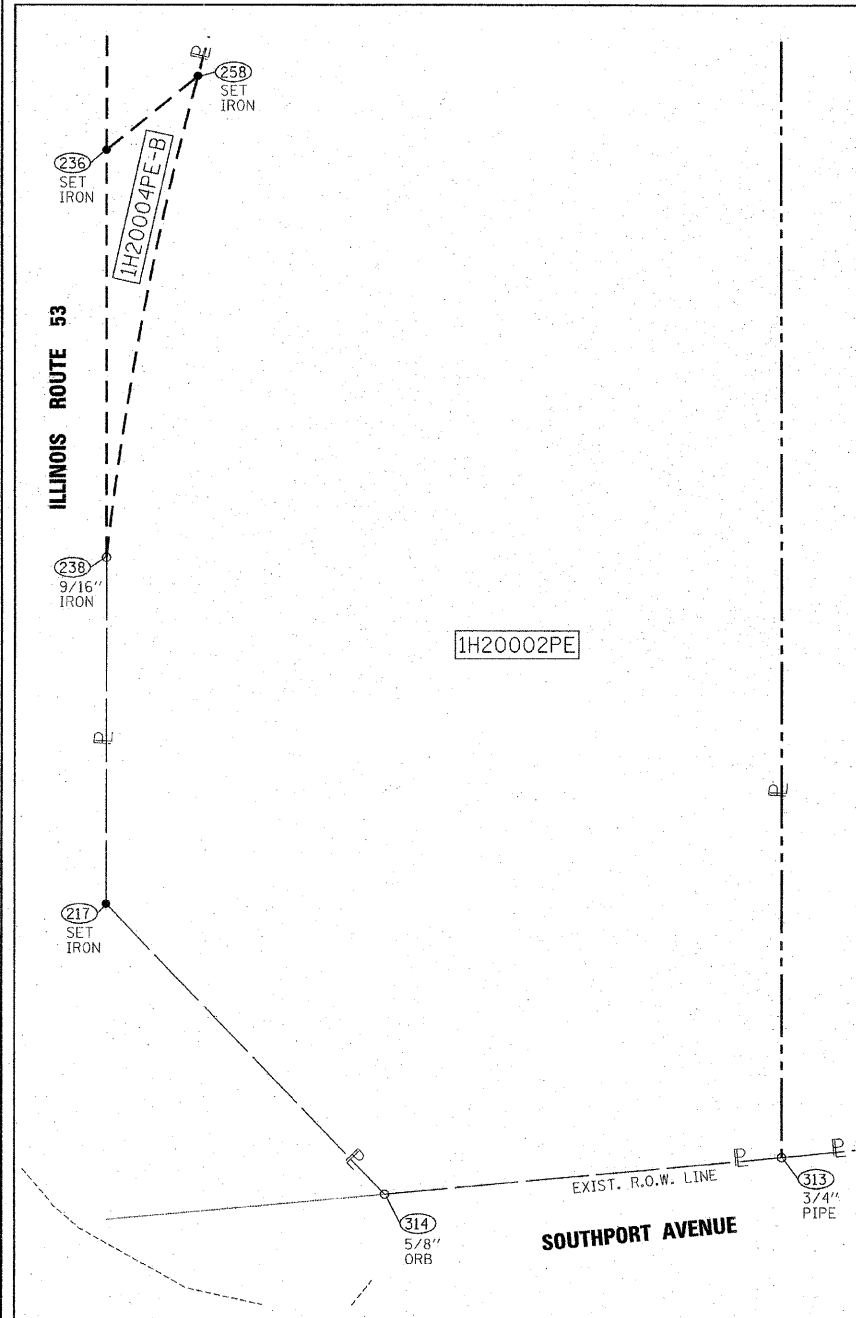
PLAT OF HIGHWAYS
 STATE OF ILLINOIS
 DEPARTMENT OF TRANSPORTATION
 ILLINOIS ROUTE 53

SECTION: OVER ST. JOSEPH CREEK COUNTY: DUPAGE
 PROJECT: IL. RT. 53 JOB NO.: R-91-029-09
 STATION 98+00 TO STATION 101+65
 SCALE: 1"=30' SHEET 2 OF 3

BUREAU OF LAND ACQUISITION
 201 WEST CENTER COURT
 SCHAUMBURG, ILLINOIS 60196

ROUTE NAME: IL. RT. 53 OVER ST. JOSEPH CREEK SECTION: ENTIRE SHEET REVISED 03/27/2012, JRB COUNTY: DUPAGE JOB NO.: R-91-029-09 RECORDING: RECORDED ON

PART OF SOUTHEAST QUARTER SECTION 3, TWP. 38N., R.10E. OF THE 3RD. P.M., IN DUPAGE COUNTY, ILLINOIS.



LEGEND

- SECTION CORNER
- QUARTER SECTION CORNER
- SECTION LINE
- QUARTER SECTION LINE
- QUARTER, QUARTER SECTION LINE
- PLATTED LOT LINES
- PROPERTY (DEED) LINE
- APPLICANT
- CENTERLINE
- EXISTING RIGHT OF WAY LINE
- PROPOSED RIGHT OF WAY LINE
- PROPOSED EASEMENT
- MEASURED DIMENSION
- COMPUTED DIMENSION
- RECORDED DIMENSION
- EXISTING BUILDING

Bearings are referenced to the Illinois Coordinate System, NAD83, East Zone, as provided by the Illinois Department of Transportation.

IRON PIPE OR ROD FOUND
CUT STAKES FOUND OR SET

“MAG” NAIL SET
5/8" REBAR SET

TI THESE STAKES REFERENCE FOUND OR SET MONUMENTATION. SET 5/8 INCH IRON ROD FLUSH WITH GROUND TO THE FOUND IRON STAKE IDENTIFIED BY COLORED PLASTIC CAP BEARING SURVEYORS REGISTRATION NUMBER.

BTI THESE STAKES IN CULTIVATED AREAS, REFERENCE FOUND OR SET MONUMENTATION. BURIED 5/8 INCH IRON ROD 20 INCHES BELOW GROUND TO THE FOUND IRON STAKE. IDENTIFIED BY COLORED PLASTIC CAP BEARING SURVEYORS REGISTRATION NUMBER.

BT2
BT3

STAKING OF PROPOSED RIGHT OF WAY. SET DIVISION OF HIGHWAYS SURVEY MARKER TO MONUMENT THE POSITION SHOWN. IDENTIFIED BY INSCRIPTION DATA AND SURVEYORS REGISTRATION NUMBER.

STAKING OF PROPOSED RIGHT OF WAY IN CULTIVATED AREAS. BURIED 5/8 INCH METAL ROD 20 INCHES BELOW GROUND TO MARK FUTURE SURVEY MARKER POSITION IDENTIFIED BY COLORED PLASTIC CAP BEARING SURVEYORS REGISTRATION NUMBER.

PERMANENT SURVEY MARKER, I.D.O.T. STANDARD 2135 (TO BE SET BY OTHERS)

RIGHT OF WAY STAKING PROPOSED TO BE SET

STATE OF ILLINOIS)
COUNTY OF WILL)

THIS IS TO CERTIFY THAT I, ROBERT A. ROGINA, AN ILLINOIS PROFESSIONAL LAND SURVEYOR, HAVE SURVEYED THE PLAT OF HIGHWAYS SHOWN HEREON IN SECTION 3, TOWNSHIP 38 NORTH, RANGE 10 EAST OF THE THIRD PRINCIPAL MERIDIAN, DUPAGE COUNTY, THAT THE SURVEY IS TRUE AND COMPLETE AS SHOWN TO THE BEST OF MY KNOWLEDGE AND BELIEF, THAT THE PLAT CORRECTLY REPRESENTS SAID SURVEY, THAT ALL MONUMENTS FOUND AND ESTABLISHED ARE OF PERMANENT QUALITY AND OCCUPY THE POSITIONS SHOWN THEREON AND THAT THE MONUMENTS ARE SUFFICIENT TO ENABLE THE SURVEY TO BE RETRACED, MADE FOR THE DEPARTMENT OF TRANSPORTATION, STATE OF ILLINOIS.

DATED AT JOLIET, ILLINOIS THIS 23RD DAY OF March, 2012 A.D.

ROBERT A. ROGINA
PROFESSIONAL LAND SURVEYOR NO. 107
LICENSE EXPIRATION DATE: 11/30/2012

SHEET ONE IS A COVER PAGE AND IS NOT RECORDED

THIS PROFESSIONAL SERVICE CONFORMS TO THE CURRENT ILLINOIS MINIMUM STANDARDS FOR A BOUNDARY SURVEY.

212	1870792.53107	1054030.87198
217	1870665.36863	1054019.76082
236	1870755.90494	1054014.06975
238	1870706.91373	1054017.14932
246	1870802.57920	1054011.13582
247	1870799.24368	1054092.52610
258	1870765.45817	1054024.45813
259	1870833.13439	1054044.36216
273	1870869.48077	1054006.93042
274	1870870.42181	1054021.90087
275	1870815.64524	1054025.34410
276	1870824.35593	1054034.81629
277	1870881.02947	1054031.25381
278	1870879.46107	1054006.30306
313	1870640.00261	1054102.74406
314	1870632.52733	1054055.40892

RECEIVED
MAR 23 2012
PLATS & LEGALS

PREPARED BY: **ROGINA & ASSOCIATES, LTD.**
ENGINEERS SURVEYORS PLANNERS
93 Caterpillar Drive - Joliet, Illinois - 815/729-0777 - FAX 815/729-0782
PROFESSIONAL DESIGN FIRM LICENSE NO. 184-001106

PLAT OF HIGHWAYS
STATE OF ILLINOIS
DEPARTMENT OF TRANSPORTATION
ILLINOIS ROUTE 53

SECTION: OVER ST. JOSEPH CREEK COUNTY: DUPAGE
PROJECT: IL. RT. 53 JOB NO.: R-91-029-09
STATION 98+00 TO STATION 101+65
SCALE: 1"=10' SHEET 3 OF 3

BUREAU OF LAND ACQUISITION
201 WEST CENTER COURT
SCHAUMBURG, ILLINOIS 60196



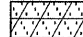
ROUTE NAME: IL. RT. 53 OVER ST. JOSEPH CREEK SECTION: Δ ADDED SHEET 03/27/2012, JRB COUNTY: DUPAGE REVISION DATE: 03/23/12 REVISION: ADD TIES MADE BY: JAK/JPS JOB NO.: R-91-029-09 RECORDING: RECORDED ON

FILE NAME = ...N016083-sh1-parcel2.dgn	Primera	DESIGNED - RJD	REVISED - Δ 3/27/2012 JRB	STATE OF ILLINOIS DEPARTMENT OF TRANSPORTATION	IL ROUTE 53 OVER ST JOSEPH'S CREEK		F.A.P. SECTION COUNTY TOTAL SHEETS SHEET NO.
		DRAWN - GEW	REVISED -		PLAT OF HIGHWAYS		870 534R-B DUPAGE 51 17A
		CHECKED - RJD	REVISED -		SCALE: N.T.S. SHEET NO. 1A OF 7 SHEETS STA. TO STA.		CONTRACT NO. 60M83
		DATE - 12/12/2011	REVISED -		RECORDING: RECORDED ON		ILLINOIS FED. AID PROJECT

PAVEMENT MARKING LEGEND:

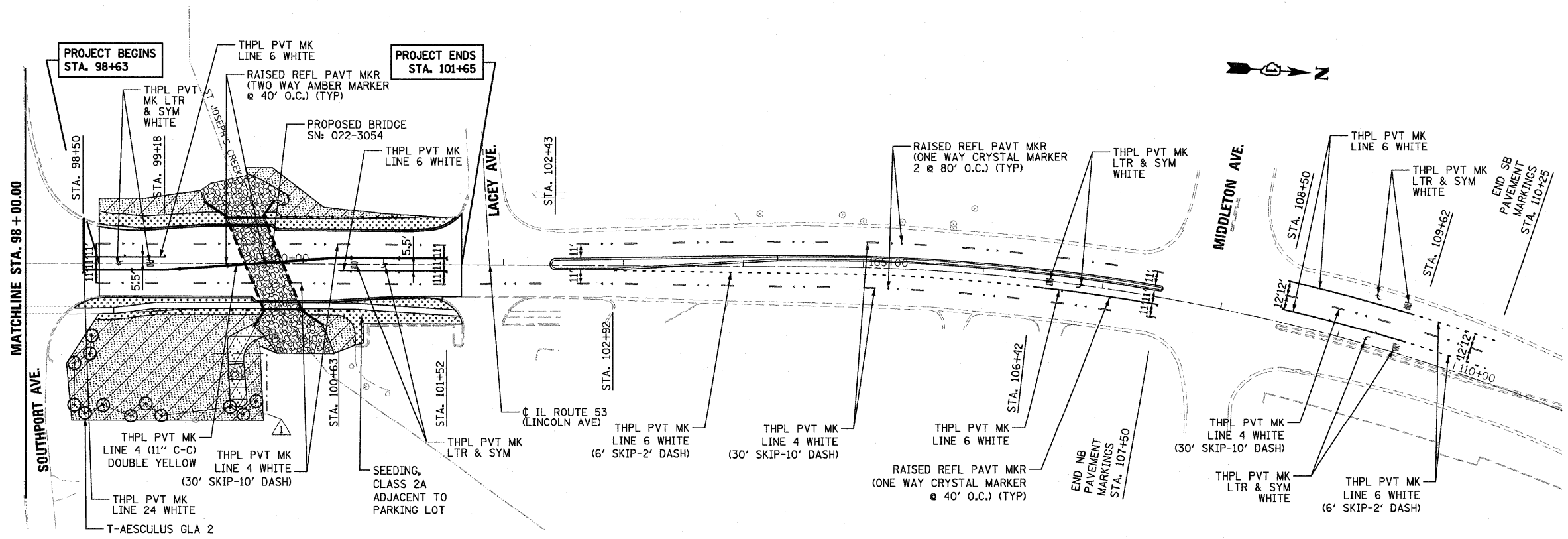
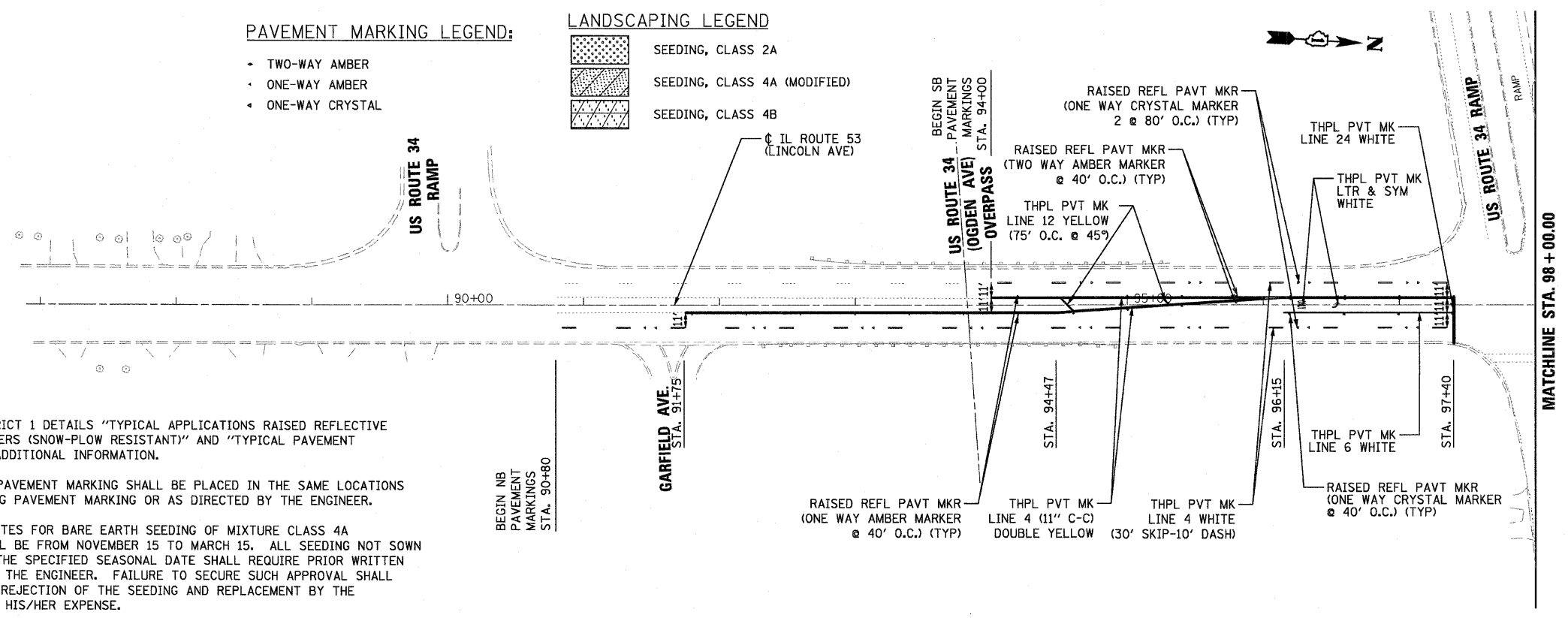
- TWO-WAY AMBER
- ONE-WAY AMBER
- ONE-WAY CRYSTAL

LANDSCAPING LEGEND

-  SEEDING, CLASS 2A
-  SEEDING, CLASS 4A (MODIFIED)
-  SEEDING, CLASS 4B

NOTES:

1. REFER TO DISTRICT 1 DETAILS "TYPICAL APPLICATIONS RAISED REFLECTIVE PAVEMENT MARKERS (SNOW-PLOW RESISTANT)" AND "TYPICAL PAVEMENT MARKING" FOR ADDITIONAL INFORMATION.
2. THE PROPOSED PAVEMENT MARKING SHALL BE PLACED IN THE SAME LOCATIONS AS THE EXISTING PAVEMENT MARKING OR AS DIRECTED BY THE ENGINEER.
3. THE SEEDING DATES FOR BARE EARTH SEEDING OF MIXTURE CLASS 4A (MODIFIED) SHALL BE FROM NOVEMBER 15 TO MARCH 15. ALL SEEDING NOT SOWN ACCORDING TO THE SPECIFIED SEASONAL DATE SHALL REQUIRE PRIOR WRITTEN APPROVAL FROM THE ENGINEER. FAILURE TO SECURE SUCH APPROVAL SHALL RESULT IN THE REJECTION OF THE SEEDING AND REPLACEMENT BY THE CONTRACTOR AT HIS/HER EXPENSE.



FILE NAME = ...\\D16M83-sht-pmk.dgn



DESIGNED - MHL	REVISED - 12/6/2011 N.W.S.
DRAWN - MHL	REVISED - 3/27/2012 JRB
CHECKED - RJD	REVISED -
DATE - 12/12/2011	REVISED -

**STATE OF ILLINOIS
DEPARTMENT OF TRANSPORTATION**

**IL ROUTE 53 OVER ST JOSEPH'S CREEK
PAVEMENT MARKING AND LANDSCAPING PLAN**

SCALE: 1" = 50' SHEET NO. 1 OF 1 SHEETS STA. 90+80 TO STA. 110+25

F.A.P. RTE. 870	SECTION 534R-B	COUNTY DuPAGE	TOTAL SHEETS 51	SHEET NO. 18
			CONTRACT NO. 60M83	
[ILLINOIS] FED. AID PROJECT				