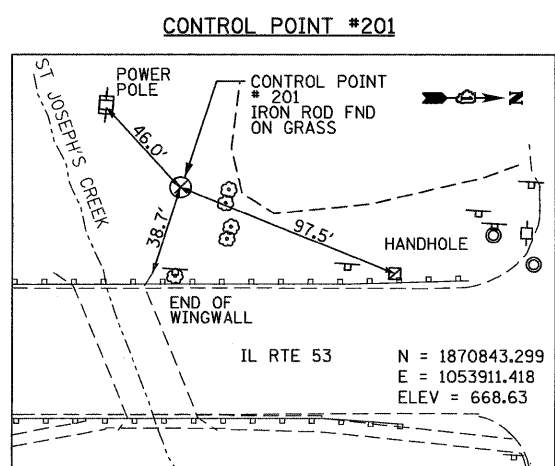
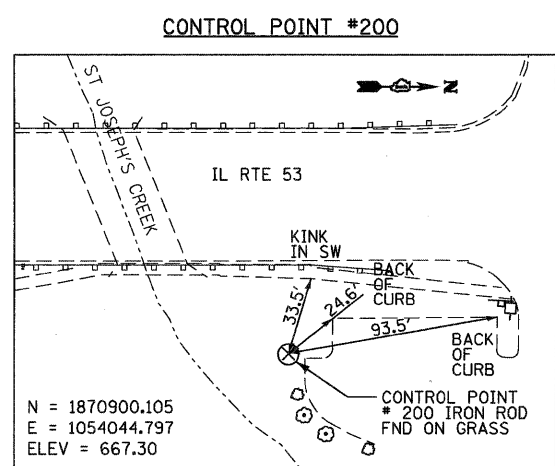
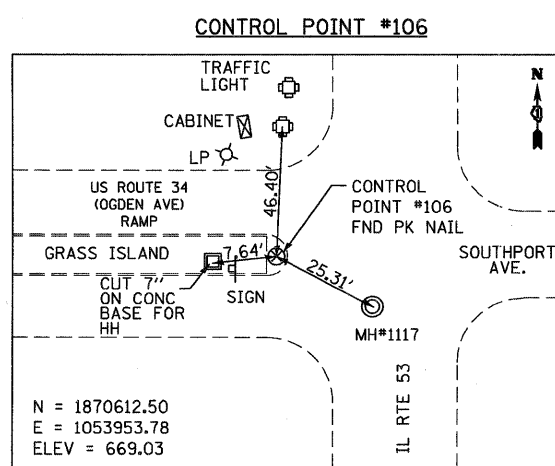
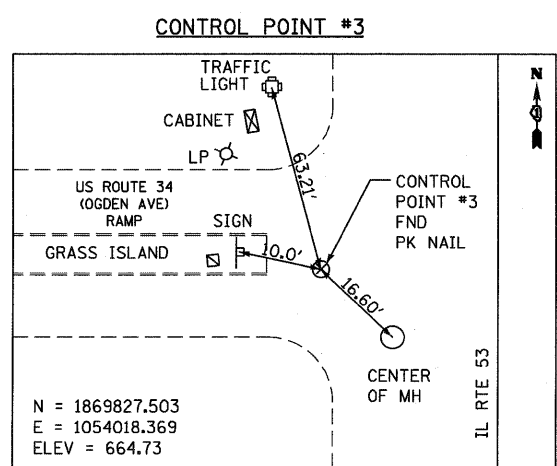


BENCHMARK:
 BM#105
 SQUARE CUT ON EASTERLY CORNER OF CONCRETE
 BASE FOR STREET LIGHTING CABINET AT NW CORNER
 OF IL RTE 53 AND EXIT RAMP TO OGDEN AVE.
 ELEV = 669.02

ALIGNMENT COORDINATES - IL RTE 53 (LINCOLN AVENUE)

	STATION	NORTHING	EASTING
	95+00	1870329.803	1054014.417
BEG.	98+63	1870692.077	1053991.476
PI	100+00.26	1870829.063	1053982.802
END	101+65	1870993.520	1053973.148
	104+00	1871228.116	1053959.377



FILE NAME =
 ...\\D162M83-ah-t-atb.dgn



DESIGNED - RJD
 DRAWN - GEW
 CHECKED - RJD
 DATE - 10/4/2011

REVISED -
 REVISED -
 REVISED -
 REVISED -

**STATE OF ILLINOIS
 DEPARTMENT OF TRANSPORTATION**

**IL ROUTE 53 OVER ST JOSEPH'S CREEK
 ALIGNMENT, TIES AND BENCHMARKS**

SCALE: 1"=50'
 SHEET NO. 1 OF 1 SHEETS STA. TO STA.

F.A.P. RTE.	SECTION	COUNTY	TOTAL SHEETS	SHEET NO.
870	534R-B	DuPAGE	51	8

CONTRACT NO. 60M83
 [ILLINOIS] FED. AID PROJECT