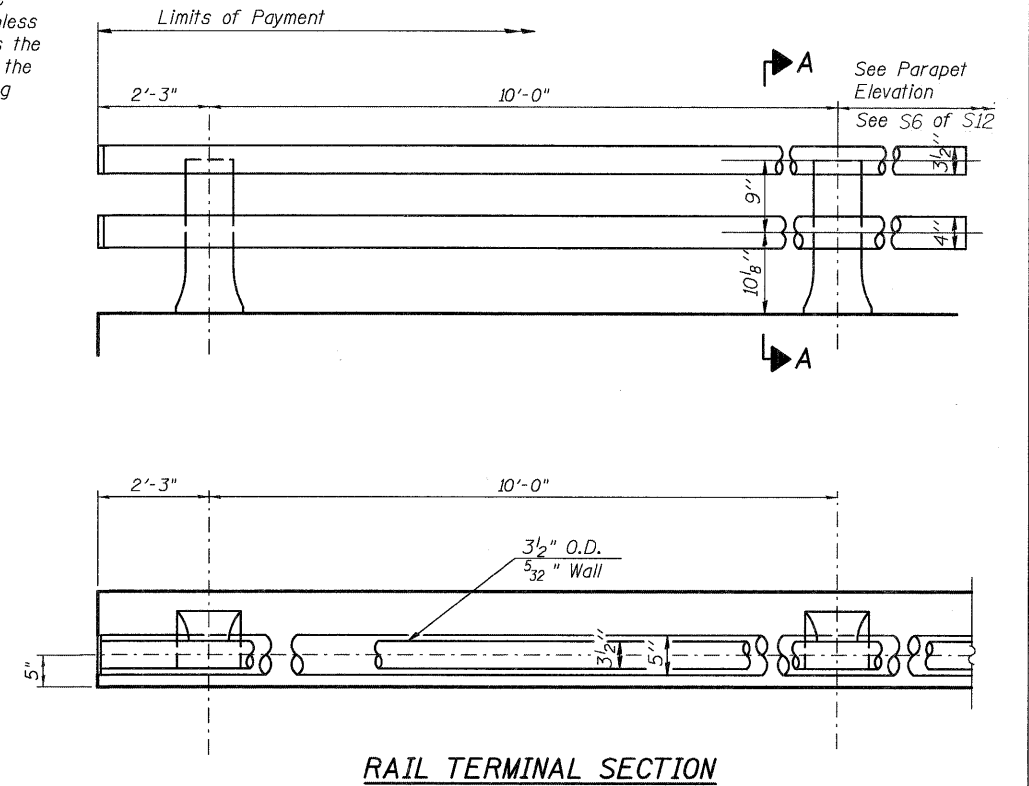
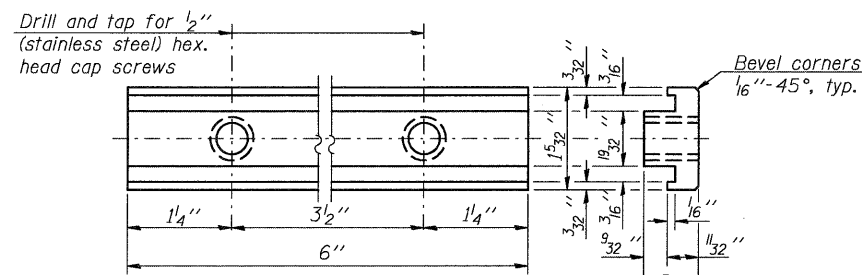


* In lieu of the cast-in-place anchor device shown, the Contractor has the option of drilling and setting stainless steel anchor rods of the same diameter and grade as the specified cap screws according to Article 509.06 of the Standard Specifications. Embedment shall be according to the manufacturer's specifications.



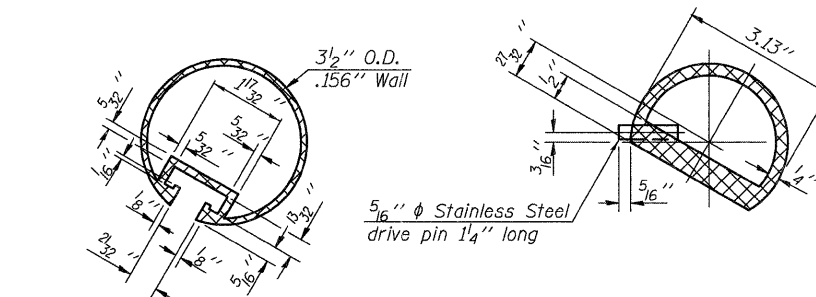
RAIL TERMINAL SECTION

RAIL POST DETAILS

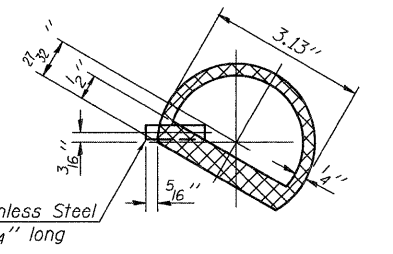


RAIL POST CLAMP BAR

For Top Rail

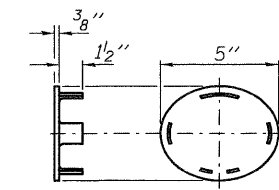


SECTION THRU TOP RAIL



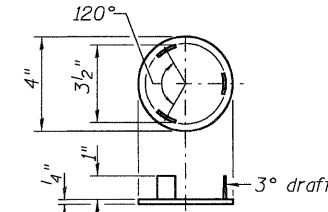
SECTION THRU SPLICE

For Top Rail



CAST END CAP

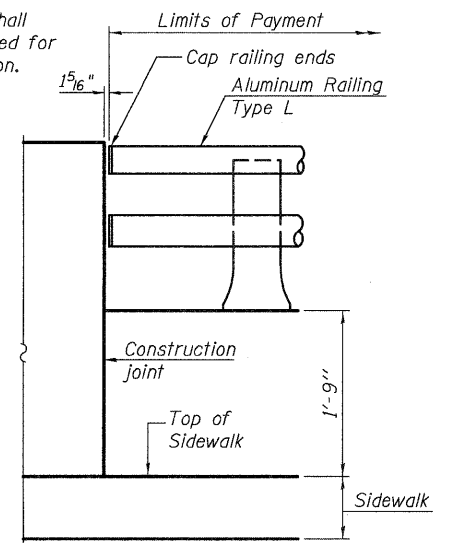
For bottom rail
DRIVE FIT TYPE



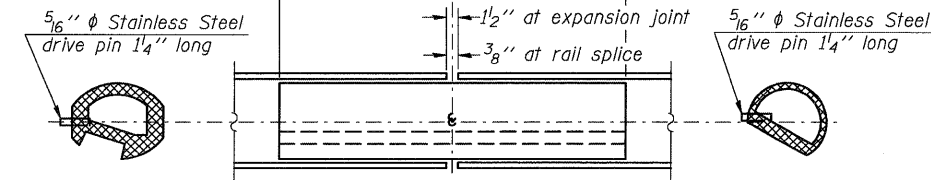
CAST END CAP

For top rail

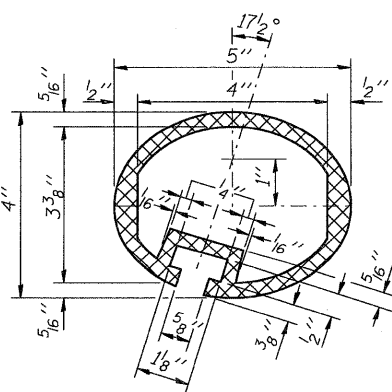
Note:
The end rail post shall be set back as required for the terminal rail section.



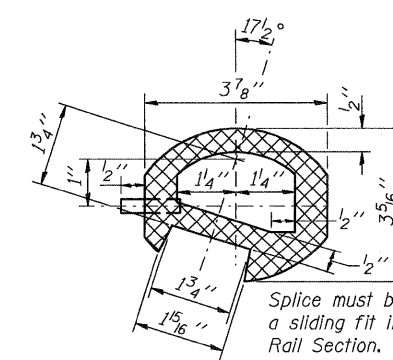
RAIL END TREATMENT FOR TYPE 5 AND 6 TERMINAL



RAIL SPLICE



SEC. THRU ELLIPTICAL RAIL SECTION



SEC. THRU SPLICE

Notes:
All Posts shall be normal to parapet.
All joints in rail shall be spliced per detail.
All exposed rail ends shall be capped per detail.
Provide 1-1/8" and 2-1/8" Aluminum Shims for 25% of the Posts. Rail elements shall be parallel to Grade-high spots will be ground and low spots shimmed.
See sheet S6 of S12 for rail post spacing.

BILL OF MATERIAL

Item	Unit	Quantity
Aluminum Railing, Type L	Foot	49