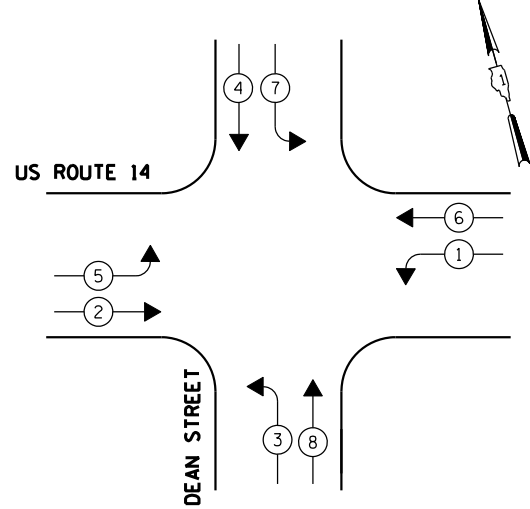
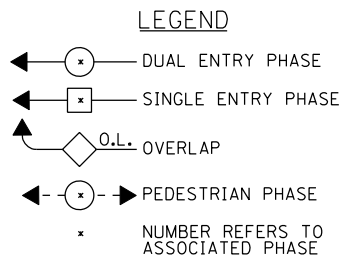
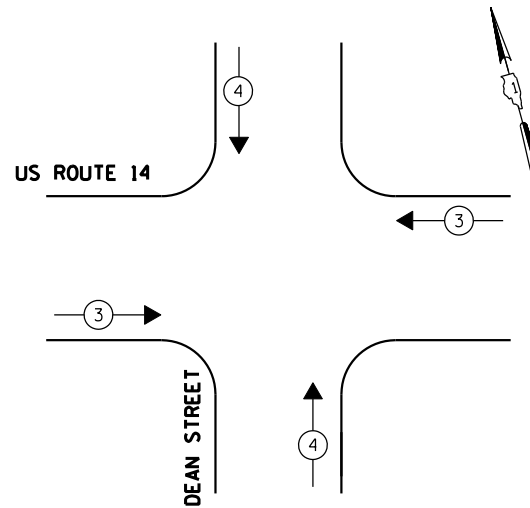


CONTROLLER SEQUENCE

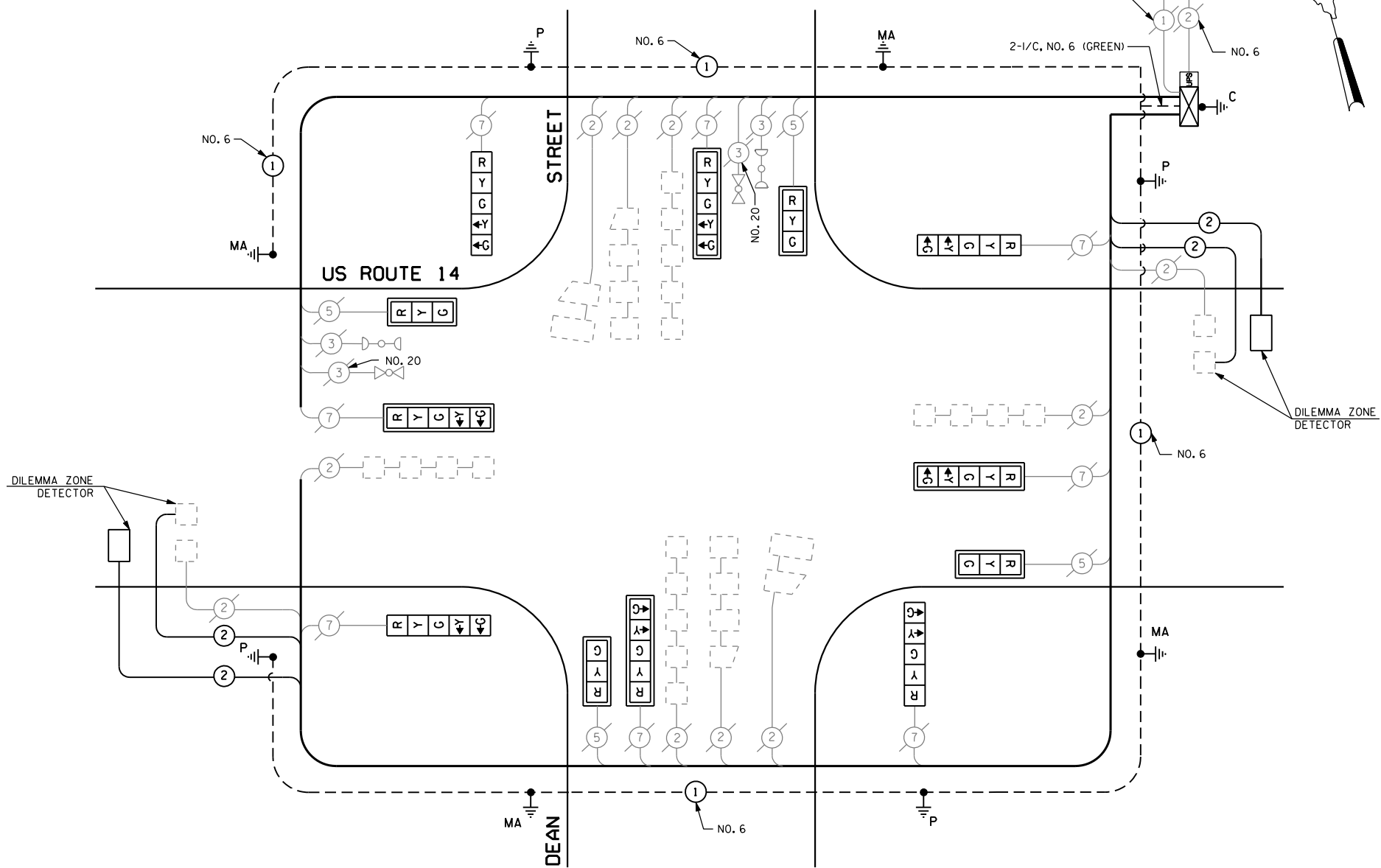


EXISTING PHASE DESIGNATION DIAGRAM

EMERGENCY VEHICLE PREEMPTION SEQUENCE



EMERGENCY VEHICLE PREEMPTORS		
EMERGENCY VEHICLE PREEMPTOR	3	4
MOVEMENT	↔	↕



MODIFIED CABLE PLAN

(NOT TO SCALE)

SCHEDULE OF QUANTITIES

QUANTITY	UNIT	ITEM
410	FOOT	UNDERGROUND CONDUIT, GALVANIZED STEEL, 2" DIA.
2	EACH	HEAVY-DUTY HANDHOLE
1	EACH	MAINTENANCE OF EXISTING TRAFFIC SIGNAL INSTALLATION
9	EACH	GROUNDING EXISTING HANDHOLE FRAME AND COVER
2140	FOOT	ELECTRIC CABLE IN CONDUIT, LEAD-IN, NO. 14 1 PAIR
659	FOOT	ELECTRIC CABLE IN CONDUIT, EQUIPMENT GROUNDING CONDUCTOR, NO. 6 1C
2	EACH	DRILL EXISTING HANDHOLE
4	EACH	SIGNAL HEAD, LED, 1-FACE, 3-SECTION, MAST ARM MOUNTED
4	EACH	SIGNAL HEAD, LED, 1-FACE, 5-SECTION, BRACKET MOUNTED
4	EACH	SIGNAL HEAD, LED, 1-FACE, 5-SECTION, MAST ARM MOUNTED
4	EACH	INDUCTIVE LOOP DETECTOR
68	EACH	DETECTOR LOOP, TYPE I
1	EACH	MODIFY EXISTING CONTROLLER CABINET
1	EACH	REMOVE EXISTING TRAFFIC SIGNAL EQUIPMENT
1	EACH	UNINTERRUPTIBLE POWER SUPPLY, SPECIAL
8	EACH	RETROREFLECTIVE TRAFFIC SIGNAL BACKPLATE

ALL BACKPLATES SHALL BE RETROREFLECTIVE TRAFFIC SIGNAL BACKPLATES.

I.D.O.T. TRAFFIC SIGNAL INSTALLATION ELECTRICAL SERVICE REQUIREMENTS					TOTAL WATTAGE
TYPE	NO LAMPS	WATTAGE INCAND.	WATTAGE LED	%OPERATION	
SIGNAL (RED)	12		17	0.50	102
(YELLOW)	12		25	0.25	75
(GREEN)	12		15	0.25	45
ARROW	16		12	0.10	19.2
PED. SIGNAL			25	1.00	
CONTROLLER	1		100	1.00	100
ILLUM. SIGN			25	0.05	
FLASHER				0.50	
ENERGY COSTS TO:					TOTAL = 341.2
CITY OF WOODSTOCK 811 REGINA COURT WOODSTOCK, IL 60098					
ENERGY SUPPLY CONTACT: LISA COOK					
PHONE: (815) 477-5204					
COMPANY: COMMONWEALTH EDISON					