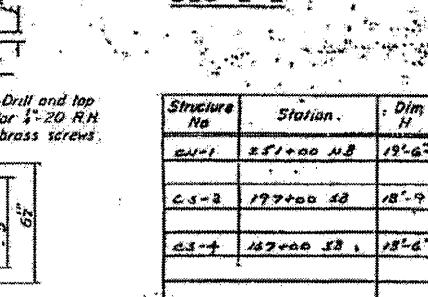
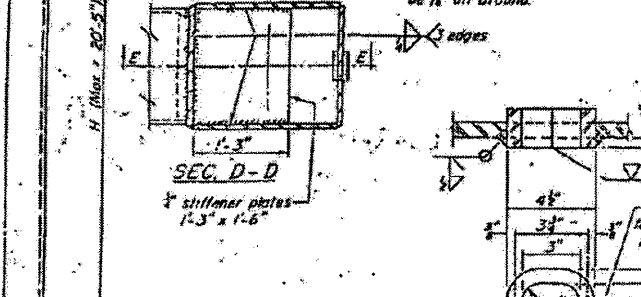
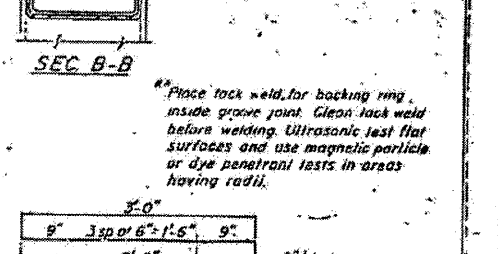
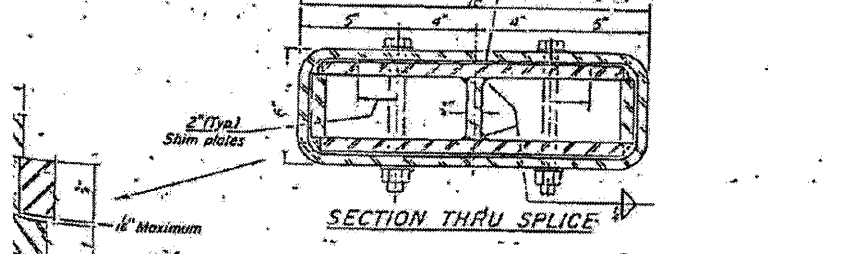
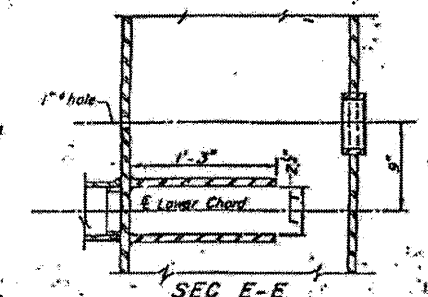
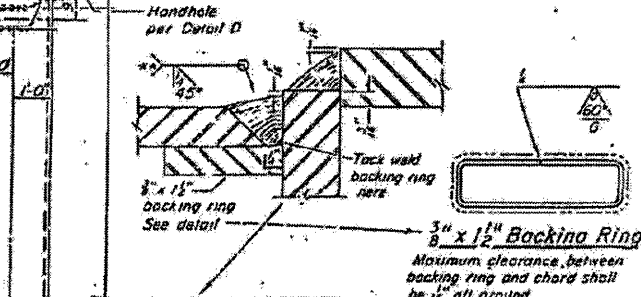
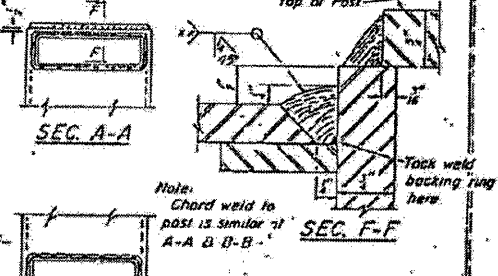
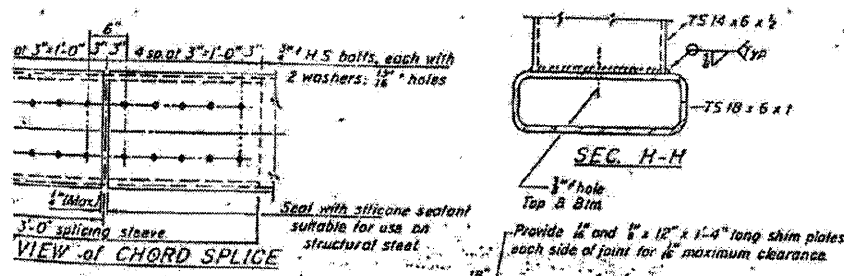
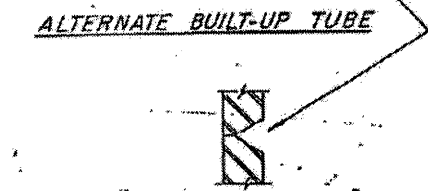
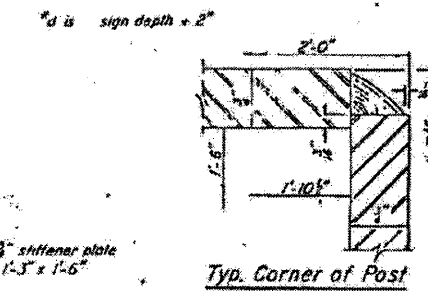
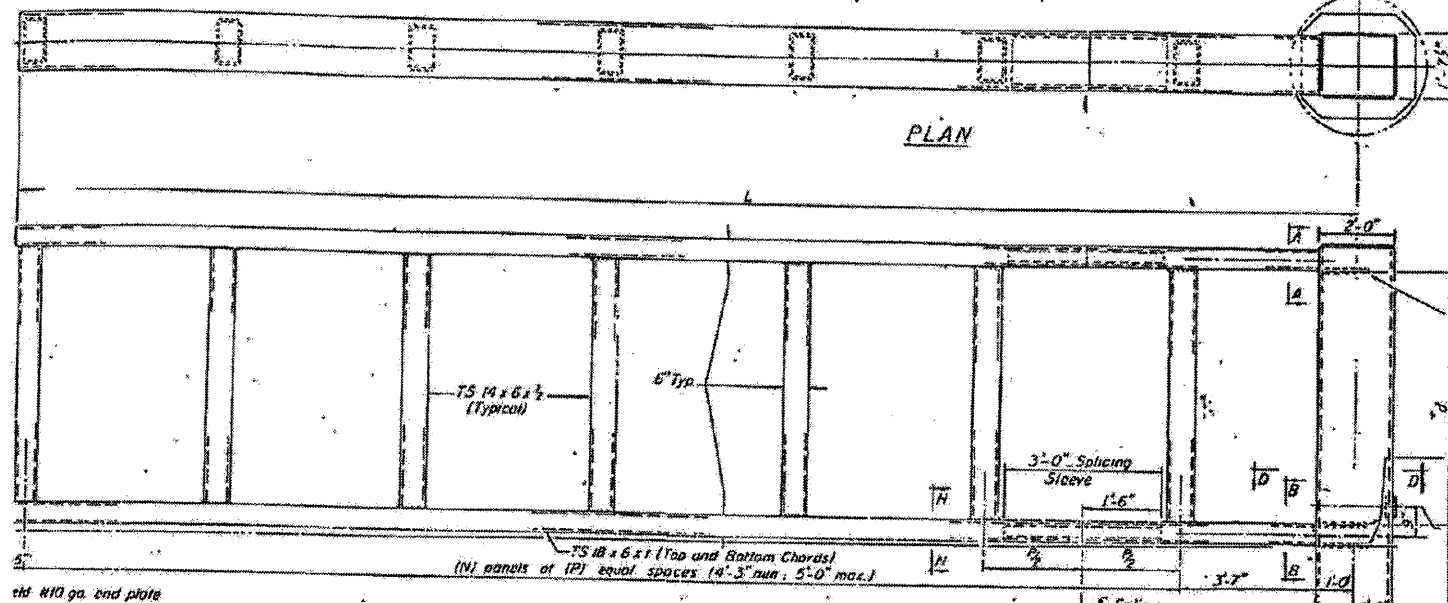
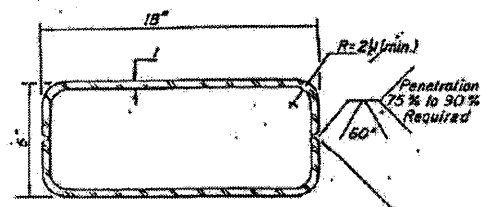


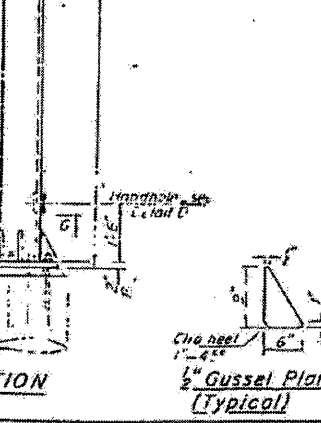
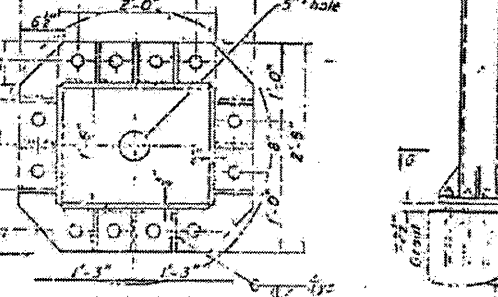
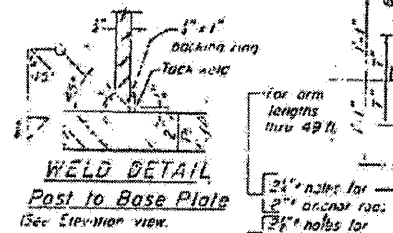
STATE OF ILLINOIS
DEPARTMENT OF TRANSPORTATION

DATE	BY	CHKD	APP'D	SHEET NO.
3/21	COOK	271	135	5
SHEET NO. 2				

L	Comber	Chord	Vertical	C-C Chords
0' to 35'	3 1/2"	TS 18 x 6 x 1/2	TS 14 x 6 x 1/2	"d + 6"
36' to 40'	4"	TS 18 x 6 x 1/2	TS 14 x 6 x 1/2	"d + 6"
41' to 45'	5 1/2"	TS 18 x 6 x 1/2	TS 14 x 6 x 1/2	"d + 6"
46' to 50'	9"	TS 18 x 6 x 1/2	TS 14 x 6 x 1/2	"d + 6"
51' to 55'	10 1/2"	TS 18 x 6 x 1/2	TS 14 x 6 x 1/2	"d + 6"



Structure No.	Station	Dim H
CS-1	251+00 NB	19'-6"
CS-2	177+00 SB	18'-9"
CS-3	167+00 SB	18'-6"



OVERHEAD SIGN STRUCTURES - CANTILEVER FRAME and POST DETAILS
FOR INFORMATION ONLY

EXAMINED	DATE
PASSED	DATE
APPROVED	DATE



USER NAME = 231ukb	DESIGNED - DJS	REVISED -
PLOT SCALE = 1/8" = 1'-0"	DRAWN - UKB	REVISED -
PLOT DATE = 3/22/2012	CHECKED - RWL	REVISED -
	DATE - 12-13-11	REVISED -

STATE OF ILLINOIS
DEPARTMENT OF TRANSPORTATION

EXISTING CANTILEVER PLANS
FOR INFORMATION ONLY

SCALE: SHEET NO. 2 OF 5 SHEETS STA. TO STA.

F.A.I. RTE.	SECTION	COUNTY	TOTAL SHEET NO.
	2011-024-SG		132
		DuPAGE/COOK	132
			132K
			CONTRACT NO. 60P24

*F.A.I. 290 (INTERSTATE 290)
*F.A.U. 342 (IL ROUTE 53)

COPYRIGHT © 2008 BY BAXTER & WOODMAN, INC. STATE OF ILLINOIS PROJECT NO. 2011-024-SG. SHEET NO. 2 OF 5. DATE: 3/22/2012.