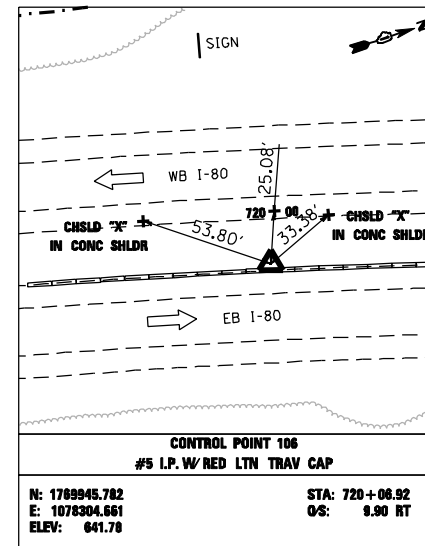
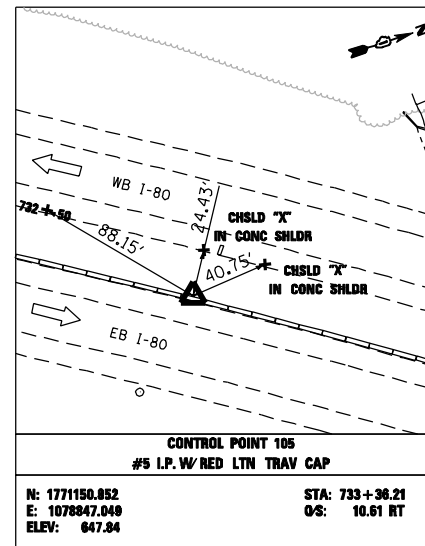
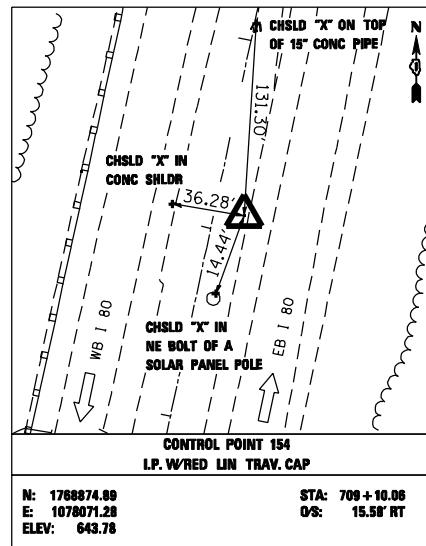
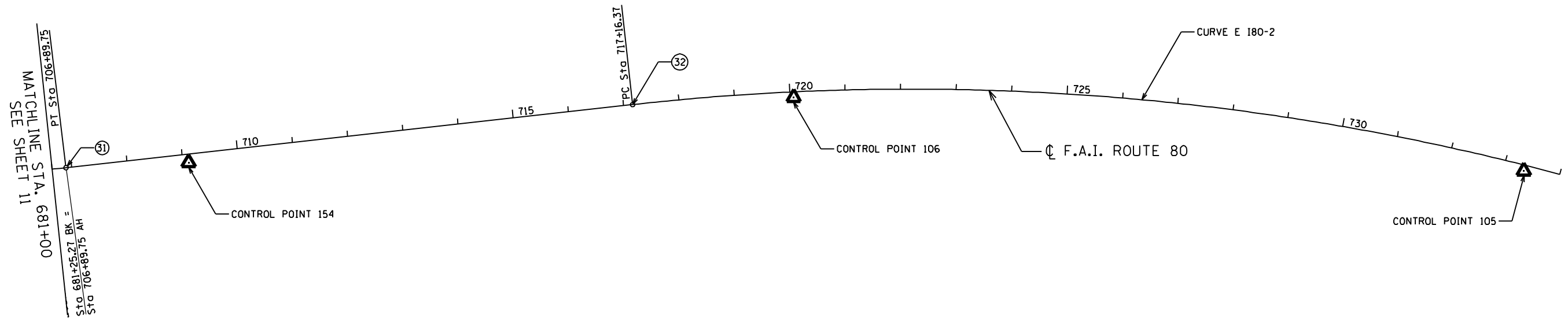


NUMBER	LOCATION	DESCRIPTION	STATION	NORTHING	EASTING
31	FAI - 80	P.T. STATION	706+89.75	1768662.742	1078009.844
32	FAI - 80	P.C. STATION	717+16.37	1769666.533	1078225.130

CURVE DATA F.A.I. ROUTE 80

CURVE E.180-2
 PI STA. = 743+64.24
 $\Delta = 60^\circ 40' 37''$ (RT)
 D = $1^\circ 15' 59''$
 R = 4,524.31'
 T = 2,647.87'
 L = 4,791.31'
 E = 717.89'
 P.C. STA = 717+16.37
 P.T. STA = 765+07.68



BM#	DESCRIPTION	ELEVATION
BM2	CHISELED SQUARE SOUTHERN MOST EDGE OF CONC. SHOULDER LOCATED 100' EAST OF STAMPED STATION 725 + 00.	642.73



USER NAME = jvandra	DESIGNED - NT	REVISED -
PLDT SCALE = 200.0000' / IN.	DRAWN - NT	REVISED -
PLDT DATE = 2/13/2012	CHECKED - JMV	REVISED -
	DATE - 02-14-2012	REVISED -

STATE OF ILLINOIS
DEPARTMENT OF TRANSPORTATION

F.A.I. ROUTE 80 AT U.S. ROUTE 30 LIGHTING
ALIGNMENTS, TIES, AND BENCHMARKS

SCALE: 1" = 100' SHEET NO. OF SHEETS STA. TO STA.

F.A.I. RTE.	SECTION	COUNTY	TOTAL SHEETS	SHEET NO.
80	2011-046-L	WILL	106	13

CONTRACT NO. 60P56
 ILLINOIS FED. AID PROJECT