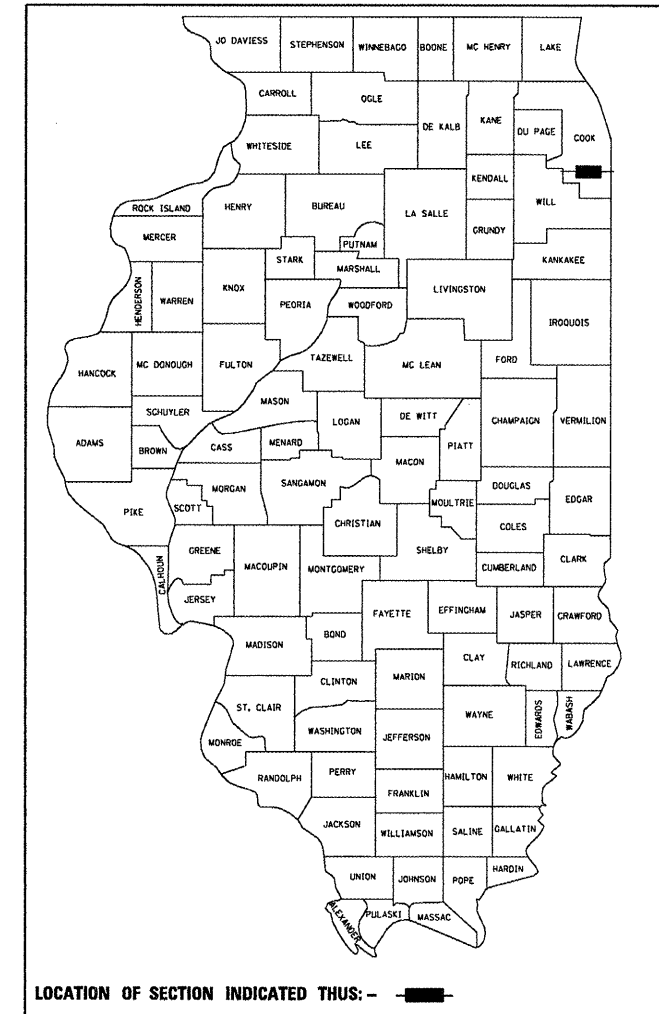


F.A.P. RTE.	SECTION	COUNTY	TOTAL SHEETS	SHEET NO.
*	2011-094-GRR	COOK	30	1
		ILLINOIS	CONTRACT NO. 60R22	

* VARIOUS ROUTES

D-91-049-12



LOCATION OF SECTION INDICATED THIS: - [highlighted area]

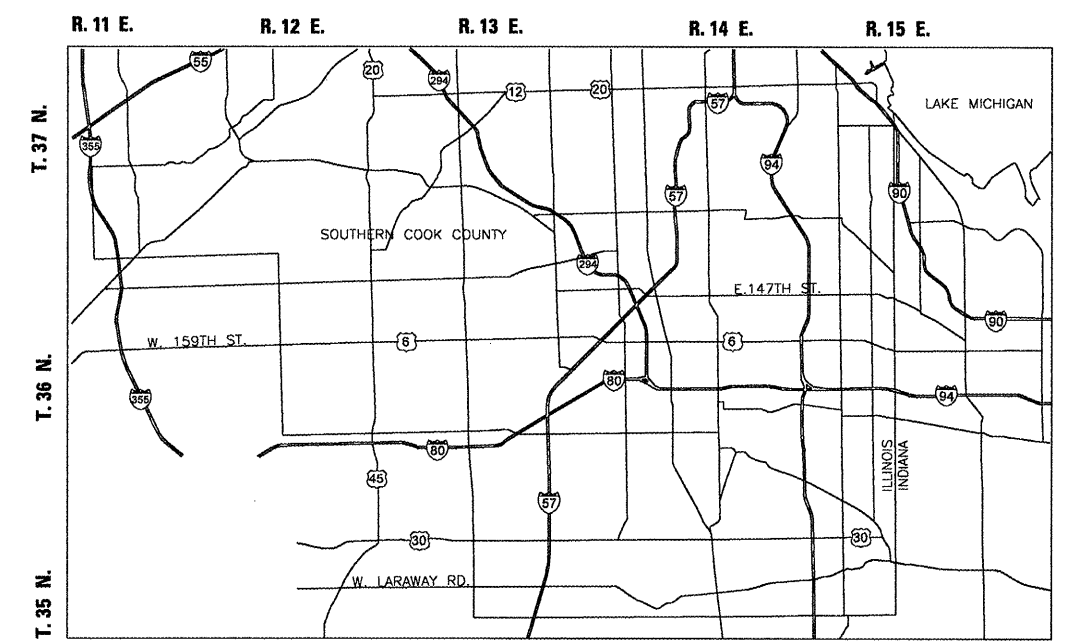
GRAEF 8501 W. Higgins Road; Suite 280
Chicago, Illinois 60631
(773) 399-0112

STATE OF ILLINOIS
DEPARTMENT OF TRANSPORTATION
DIVISION OF HIGHWAYS

SUBMITTED JANUARY 30, 2012
Diane M. O'Keefe DEPUTY DIRECTOR OF HIGHWAYS, REGION ENGINEER
MARCH 23, 2012
John D. Baranzelli, P.E. acting ENGINEER OF DESIGN AND ENVIRONMENT
MARCH 23, 2012
William R. Freyer acting DIRECTOR OF HIGHWAYS, CIVIL ENGINEER

PRINTED BY THE AUTHORITY OF THE STATE OF ILLINOIS

STATE OF ILLINOIS
DEPARTMENT OF TRANSPORTATION
DIVISION OF HIGHWAYS
PROPOSED HIGHWAY PLANS
VARIOUS ROUTES
SECTION 2011-094-GRR
VARIOUS LOCATIONS IN SOUTHERN COOK COUNTY
GUARDRAIL IMPROVEMENTS
PROJECT: HSIP-0005(880)
COOK COUNTY
C-91-049-12



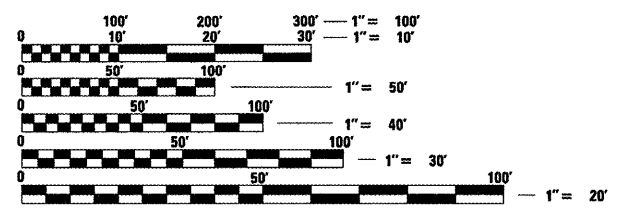
TOWNSHIPS BLOOM, BREMEN, CALUMET, HYDE PARK, LAKE, LEMONT, ORLAND, PALOS, RICH, THORNTON, AND WORTH

THE PROJECT IS LOCATED IN THE CITIES OF: PALOS HEIGHTS, COUNTRY CLUB HILLS, HOMETOWN, HARVEY, CHICAGO, HICKORY HILLS, CALUMET CITY, BLUE ISLAND, BERWYN AND MARKHAM AND IN THE VILLAGES OF: GLENWOOD, LEMONT, ORLAND PARK, TINLEY PARK, MATTESON, RICHTON PARK, THORNTON, SAUK VILLAGE, PALOS PARK, CRESTWOOD, PARK FOREST, FLOSSMOOR AND HOMEWOOD.

FOR INDEX OF SHEETS, SEE SHEET NO. 2

TRAFFIC DATA

- | | |
|---|--|
| IL 1
EXISTING ADT = 25,400
SPEED LIMIT = 35-45 MPH | WILLIAMS STREET
EXISTING ADT = 17,000
SPEED LIMIT = 40 MPH |
| IL 171
EXISTING ADT = 13,900-34,000
SPEED LIMIT = 45-50 MPH | 131ST STREET
EXISTING ADT = 11,800
SPEED LIMIT = 35-40 MPH |
| IL 43
EXISTING ADT = 7,000-29,100
SPEED LIMIT = 55 MPH | 135TH STREET
EXISTING ADT = 9,700
SPEED LIMIT = 20-50 MPH |
| IL 50
EXISTING ADT = 14,900-18,400
SPEED LIMIT = 35-40 MPH | 183RD STREET
EXISTING ADT = 17,000
SPEED LIMIT = 50 MPH |
| IL 83
EXISTING ADT = 17,000-24,800
SPEED LIMIT = 45 MPH | 26TH STREET
EXISTING ADT = 2,750-14,500
SPEED LIMIT = 40 MPH |
| SOUTHWEST HIGHWAY
EXISTING ADT = 11,500-16,500
SPEED LIMIT = 45-50 MPH | CHICAGO ROAD
EXISTING ADT = 6,000
SPEED LIMIT = 35 MPH |
| THORNTON ROAD
EXISTING ADT = 7,200-32,000
SPEED LIMIT = 55 MPH | CRAWFORD ROAD
EXISTING ADT = 11,900-18,600
SPEED LIMIT = 40-45 MPH |
| TORRENCE AVENUE
EXISTING ADT = 6,700-12,700
SPEED LIMIT = 45-50 MPH | DIXIE HIGHWAY
EXISTING ADT = 10,700-16,000
SPEED LIMIT = 35-40 MPH |
| US 1220
EXISTING ADT = 17,500-21,900
SPEED LIMIT = 35-40 MPH | GLENWOOD DRYER ROAD
EXISTING ADT = 19,200-20,200
SPEED LIMIT = 40 MPH |
| US 6
EXISTING ADT = 14,200-38,400
SPEED LIMIT = 40 MPH | GOVERNORS HIGHWAY
EXISTING ADT = 8,700-12,200
SPEED LIMIT = 40-45 MPH |
| WESTERN AVENUE
EXISTING ADT = 19,200-20,200
SPEED LIMIT = 25-35 MPH | |



FULL SIZE PLANS HAVE BEEN PREPARED USING STANDARD ENGINEERING SCALES. REDUCED SIZED PLANS WILL NOT CONFORM TO STANDARD SCALES. IN MAKING MEASUREMENTS ON REDUCED PLANS, THE ABOVE SCALES MAY BE USED.

J.U.L.I.E.
JOINT UTILITY LOCATION INFORMATION FOR EXCAVATION
1-800-892-0123
OR 811

PROJECT ENGINEER: PETER JOHNSTON (GRAEF) 773-399-0112
PROJECT MANAGER: KEN ENG (IDOT) 847-705-4247

CONTRACT NO. 60R22

REGISTERED PROFESSIONAL ENGINEER
PETER M. JOHNSTON
062-047647
STATE OF ILLINOIS
Peter M. Johnston
1-26-12
LICENSE EXPIRES 11-30-2011