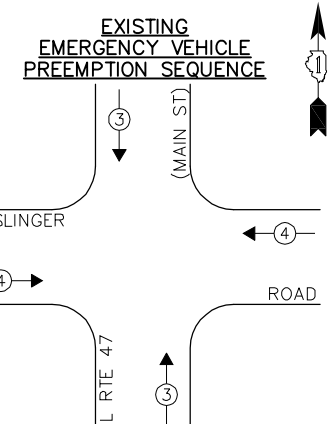


**LEGEND:**

- ◀ \* → SINGLE ENTRY PHASE
- ◀ \* → DUAL ENTRY PHASE
- ◀ \* → PEDESTRIAN PHASE
- \* NUMBER REFERS TO ASSOCIATED PHASE
- ◀ \* → OL OVERLAP



EMERGENCY VEHICLE PREEMPTOR	3	4
MOVEMENT	↑	→

I.D.O.T. TRAFFIC SIGNAL INSTALLATION ELECTRICAL SERVICE REQUIREMENTS					TOTAL WATTAGE
TYPE	NO. LAMPS	WATTAGE		% OPERATION	
SIGNAL (RED)	12	135	17	0.50	102.0
SIGNAL (YELLOW)	12	135	25	0.25	75.0
SIGNAL (GREEN)	12	135	15	0.25	45.0
ARROW	16	135	12	0.10	19.2
PED. SIGNAL	-	90	25	1.00	-
CONTROLLER	1	-	100	1.00	100.0
LUMINAIRE	-	-	250	0.50	-
L.E.D. ST. NAME SIGN	-	-	64	0.50	-
VIDEO SYSTEM	-	-	150	1.00	-
BATTERY BACKUP	1	-	25	1.00	25.0
ILLUMINATED SIGN	-	-	25	0.05	-
TOTAL =					366.2

ENERGY COSTS - BILLED TO: VILLAGE OF ELBURN  
 (ADDRESS) 301 E. NORTH STREET  
 (ADDRESS) ELBURN, IL 60119  
 ENERGY SUPPLY - CONTACT: \_\_\_\_\_  
 PHONE: \_\_\_\_\_  
 COMPANY: \_\_\_\_\_

NO.	QUANT.	UNIT	DESCRIPTION
1.	1	EACH	MAINTENANCE OF EXISTING TRAFFIC SIGNAL INSTALLATION
2.	1	EACH	MODIFY EXISTING CONTROLLER CABINET
3.	1	EACH	UNINTERRUPTABLE POWER SUPPLY, SPECIAL
4.	4	EACH	SIGNAL HEAD, LED, 1-FACE, 3-SECTION, MAST ARM MOUNTED, RETROFIT
5.	4	EACH	SIGNAL HEAD, LED, 1-FACE, 5-SECTION, MAST ARM MOUNTED, RETROFIT
6.	4	EACH	SIGNAL HEAD, LED, 1-FACE, 5-SECTION, BRACKET MOUNTED, RETROFIT