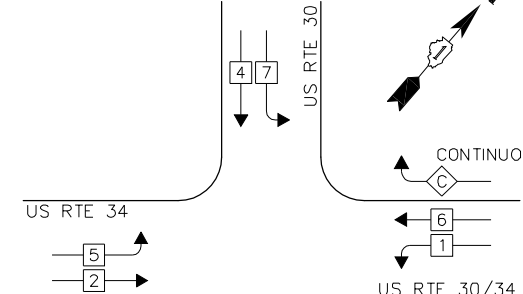


CONTROLLER SEQUENCE

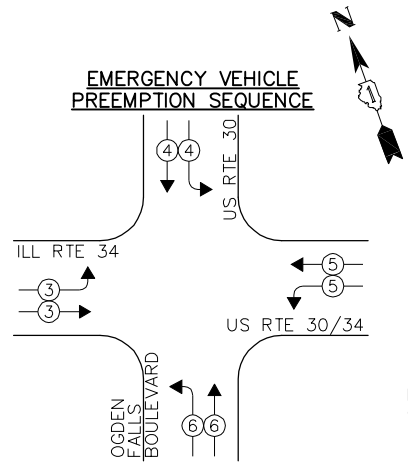


OVERLAP LETTER C = PERMISSIVE PHASE PROTECTED PHASE CONTINUOUS FLOW

LEGEND:

- ◀ * → SINGLE ENTRY PHASE
- ◀ • → DUAL ENTRY PHASE
- ◀ • → PEDESTRIAN PHASE
- * NUMBER REFERS TO ASSOCIATED PHASE
- ◀ * → OVERLAP

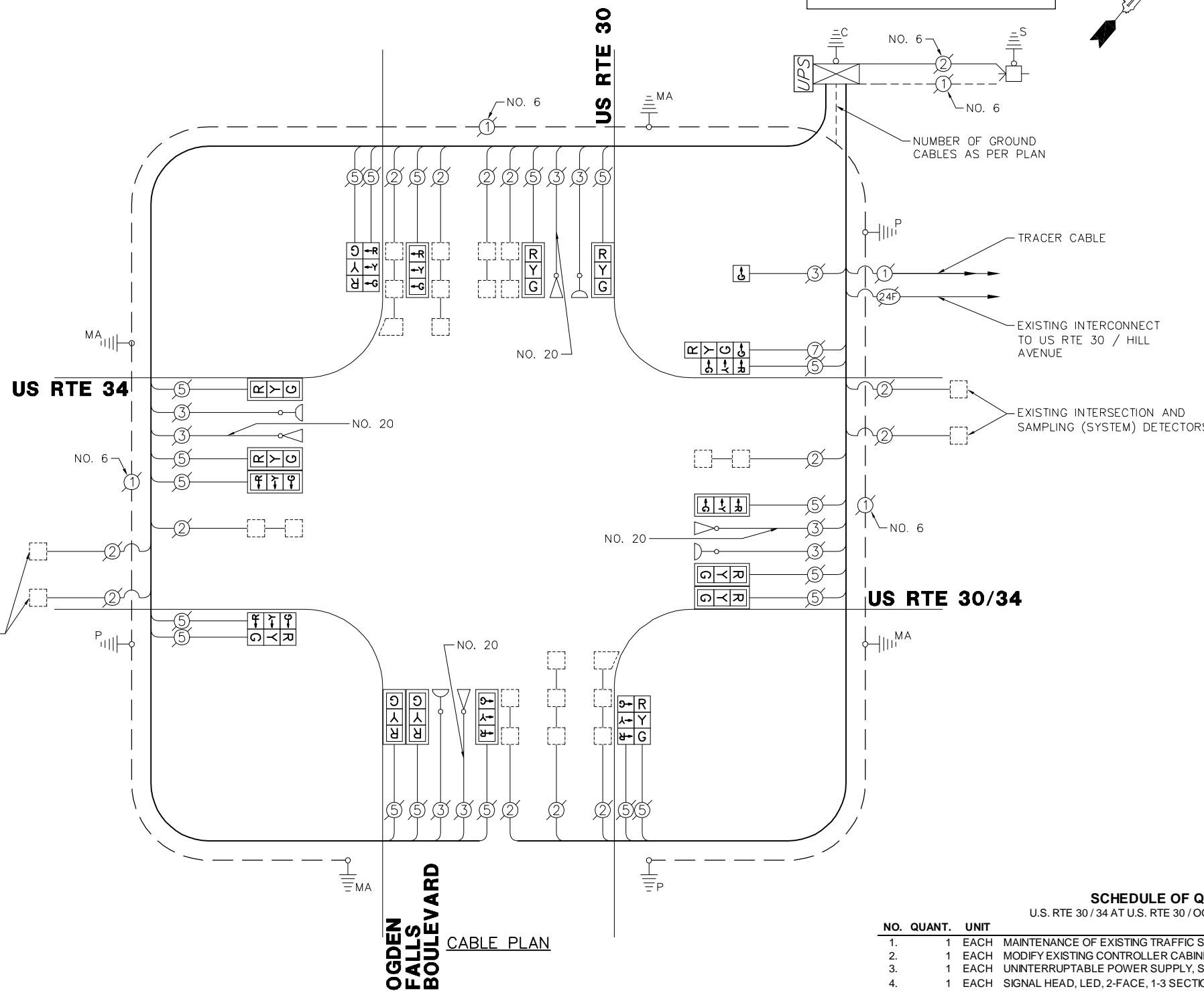
PHASE DESIGNATION DIAGRAM



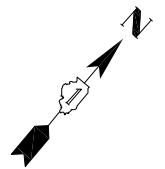
| EXISTING EMERGENCY VEHICLE PREEMPTORS | | | | |
|---------------------------------------|---|---|---|---|
| EMERGENCY VEHICLE PREEMPTOR | 3 | 4 | 5 | 6 |
| MOVEMENT | ⇌ | ⇌ | ⇌ | ⇌ |

| I.D.O.T. TRAFFIC SIGNAL INSTALLATION ELECTRICAL SERVICE REQUIREMENTS | | | | | TOTAL WATTAGE |
|--|-----------|---------|--------|-------------|---------------|
| TYPE | NO. LAMPS | INCAND. | L.E.D. | % OPERATION | |
| SIGNAL (RED) | 20 | 135 | 17 | 0.50 | 170.0 |
| SIGNAL (YELLOW) | 20 | 135 | 25 | 0.25 | 125.0 |
| SIGNAL (GREEN) | 22 | 135 | 15 | 0.25 | 82.5 |
| ARROW | - | 135 | 12 | 0.10 | - |
| PED. SIGNAL | - | 90 | 25 | 1.00 | - |
| CONTROLLER | 1 | - | 100 | 1.00 | 100.0 |
| LUMINAIRE | - | - | 250 | 0.50 | - |
| L.E.D. ST. NAME SIGN | - | - | 64 | 0.50 | - |
| VIDEO SYSTEM | - | - | 150 | 1.00 | - |
| BATTERY BACKUP | 1 | - | 25 | 1.00 | 25.0 |
| ILLUMINATED SIGN | - | - | 25 | 0.05 | - |
| TOTAL = | | | | | 502.5 |

ENERGY COSTS - BILLED TO: VILLAGE OF OSWEGO
 (ADDRESS) 100 PARKERS MILL
 (ADDRESS) OSWEGO, IL 60543
 ENERGY SUPPLY - CONTACT: _____
 PHONE: _____
 COMPANY: _____



RETROFIT ALL EXISTING TRAFFIC SIGNAL HEADS TO L.E.D.



OGDEN FALLS BOULEVARD CABLE PLAN

SCHEDULE OF QUANTITIES
U.S. RTE 30/34 AT U.S. RTE 30 / OGDEN FALLS BOULEVARD

| NO. | QUANT. | UNIT | DESCRIPTION |
|-----|--------|------|---|
| 1. | 1 | EACH | MAINTENANCE OF EXISTING TRAFFIC SIGNAL INSTALLATION |
| 2. | 1 | EACH | MODIFY EXISTING CONTROLLER CABINET |
| 3. | 1 | EACH | UNINTERRUPTABLE POWER SUPPLY, SPECIAL |
| 4. | 1 | EACH | SIGNAL HEAD, LED, 2-FACE, 1-3 SECTION, 1-4 SECTION, BRACKET MOUNTED, RETROFIT |
| 5. | 1 | EACH | SIGNAL HEAD, LED, 1-FACE, 1-SECTION, BRACKET MOUNTED, RETROFIT |
| 6. | 12 | EACH | SIGNAL HEAD, LED, 1-FACE, 3-SECTION, MAST ARM MOUNTED, RETROFIT |
| 7. | 3 | EACH | SIGNAL HEAD, LED, 2-FACE, 3-SECTION, BRACKET MOUNTED, RETROFIT |

| | | | |
|------------------------------|---------------------------|-----------------|-----------|
| FILE NAME = 4085.881-TR1.dwg | USER NAME = ZACH WALLSTEN | DESIGNED - JRD | REVISED - |
| | PLOT SCALE = 1" = .0833' | DRAWN - ZCW | REVISED - |
| | PLOT DATE = 2/3/2012 | CHECKED - KLB | REVISED - |
| | | DATE - 2/3/2012 | REVISED - |

STATE OF ILLINOIS DEPARTMENT OF TRANSPORTATION

SCHEDULE OF QUANTITIES, CABLE PLAN, PHASE DESIGNATION DIAGRAM, & EMERGENCY VEHICLE PREEMPTION SEQUENCE
US RTE 30/34 AT US RTE 30 / OGDEN FALLS BOULEVARD

| | | | | |
|--------------------|--------------------|----------------|-----------------|--------------|
| F.A.P. RTE. VARIES | SECTION 2011-221-I | COUNTY KENDALL | TOTAL SHEETS 43 | SHEET NO. 42 |
| CONTRACT # 60R81 | | | GHA #4085.881 | |