

F.A. RTE.	SECTION	COUNTY	TOTAL SHEETS	SHEET NO.
	JB-1 (11)	DUPAGE	13	1
FED. ROAD DIST. NO 1	ILLINOIS	CONTRACT NO. 60R88		

STATE OF ILLINOIS
DEPARTMENT OF TRANSPORTATION
DIVISION OF HIGHWAYS

**PROPOSED
HIGHWAY PLANS**

**MS 99/FAP 347 (IL 38 N. FRONTAGE RD – BRUSH HILL ROAD)/(IL 38)
OVER SALT CREEK
SECTION: JB-1 (11)
SCOUR COUNTERMEASURES AND STRUCTURAL REPAIR
DUPAGE COUNTY
C-91-233-12**

FOR INDEX OF SHEETS, SEE SHEET NO. 2
FOR TRAFFIC DATA, SEE SHEET NO. 4

IMPROVEMENT LOCATED IN THE
CITY OF ELMHURST



STATE OF ILLINOIS
DEPARTMENT OF TRANSPORTATION
DIVISION OF HIGHWAYS

SUBMITTED FEBRUARY 14, 2012
Deane M. O'Keefe
DEPUTY DIRECTOR OF HIGHWAYS, REGION ENGINEER

March 23, 2012
John D. Baranzelli, P.E.
ACTING ENGINEER OF DESIGN AND ENVIRONMENT

March 23, 2012
William R. Frey
ACTING DIRECTOR OF HIGHWAYS, CHIEF ENGINEER

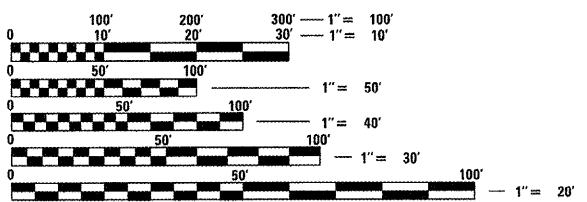
PROFESSIONAL ENGINEER'S SIGN & SEAL

Christopher M. Hooper

EXPIRES: 11-30-13

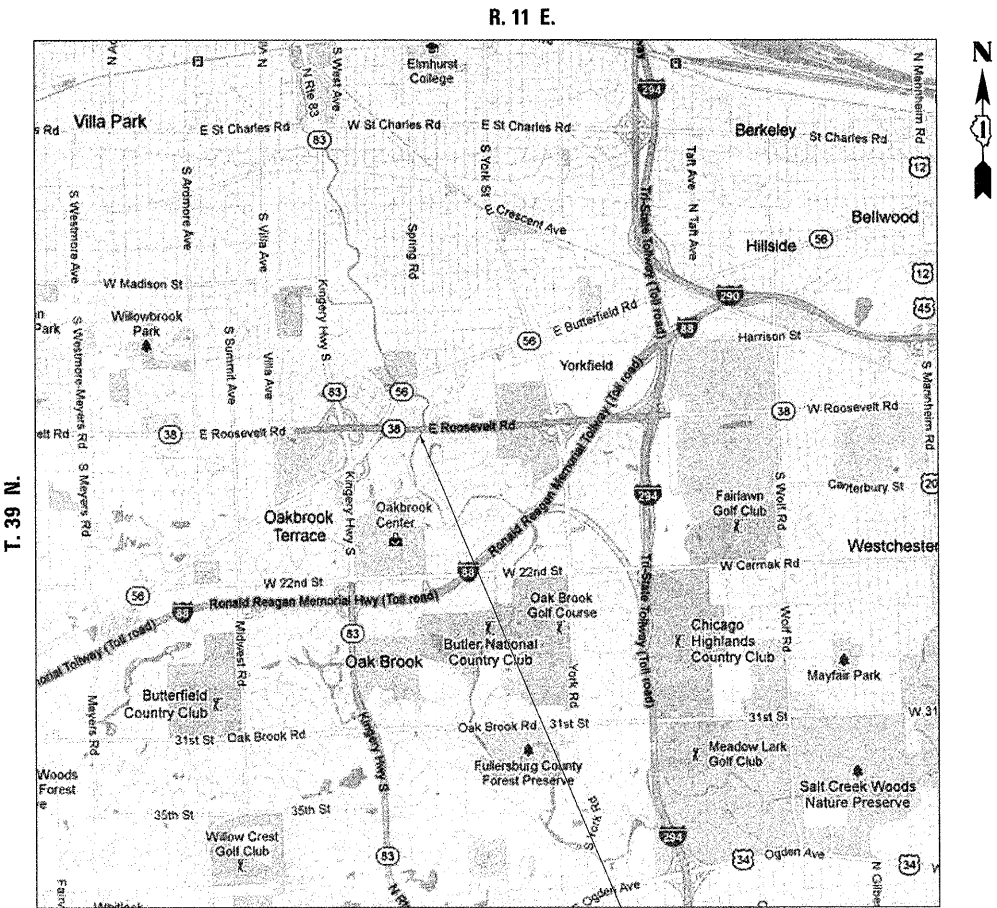
PRINTED BY THE AUTHORITY
OF THE STATE OF ILLINOIS

DISTRICT ONE - PLAN PREPARATION ENGINEER: KEN ENG: (847) 705-4247



FULL SIZE PLANS HAVE BEEN PREPARED USING STANDARD ENGINEERING SCALES. REDUCED SIZED PLANS WILL NOT CONFORM TO STANDARD SCALES. IN MAKING MEASUREMENTS ON REDUCED PLANS, THE ABOVE SCALES MAY BE USED.

J.U.L.I.E.
JOINT UTILITY LOCATION INFORMATION FOR EXCAVATION
1-800-892-0123
OR 811



PROJECT LOCATION:
S.N. 022-0028, BRUSH HILL ROAD (NORTH FRONTAGE ROAD)
S.N. 022-0026, FAP 347, IL RTE 38 (ROOSEVELT ROAD)
OVER SALT CREEK

CONTRACT NO. 60R88