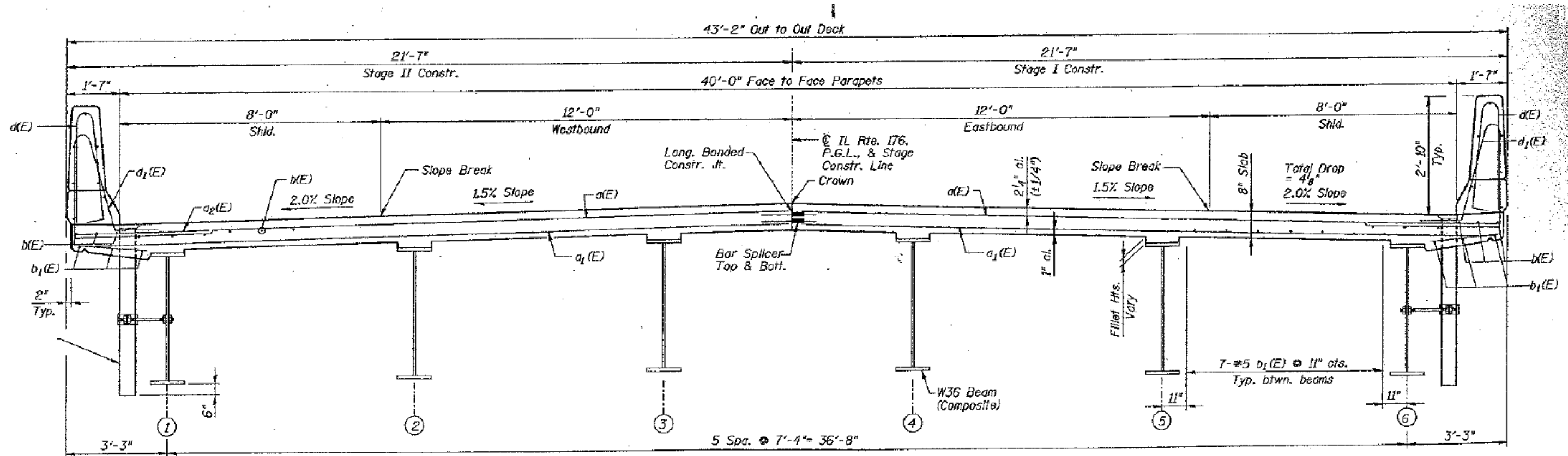
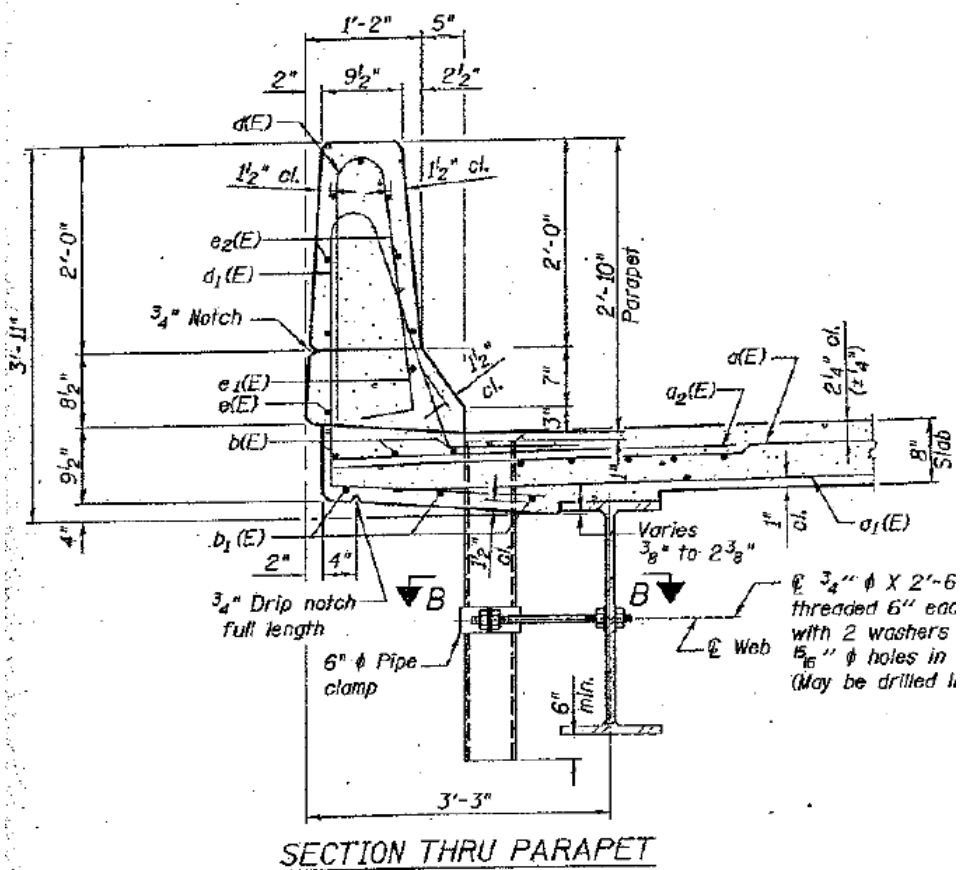


ROUTE	SECTION	COUNTY	TOTAL SHEETS	SHEET NUMBER
VARIOUS	2011-227-1	MCHENRY	53	39

CONTRACT NO. 60R91



CROSS SECTION
(Looking East)



SECTION THRU PARAPET

FOR INFORMATION ONLY

ILLINOIS DEPARTMENT OF
TRANSPORTATION

EXISTING PLAN & CROSS SECTION
LOCATION 13 (SN 056-0078)
IL 176 OVER KISHWAUKEE RIVER
SHEET 2 OF 2