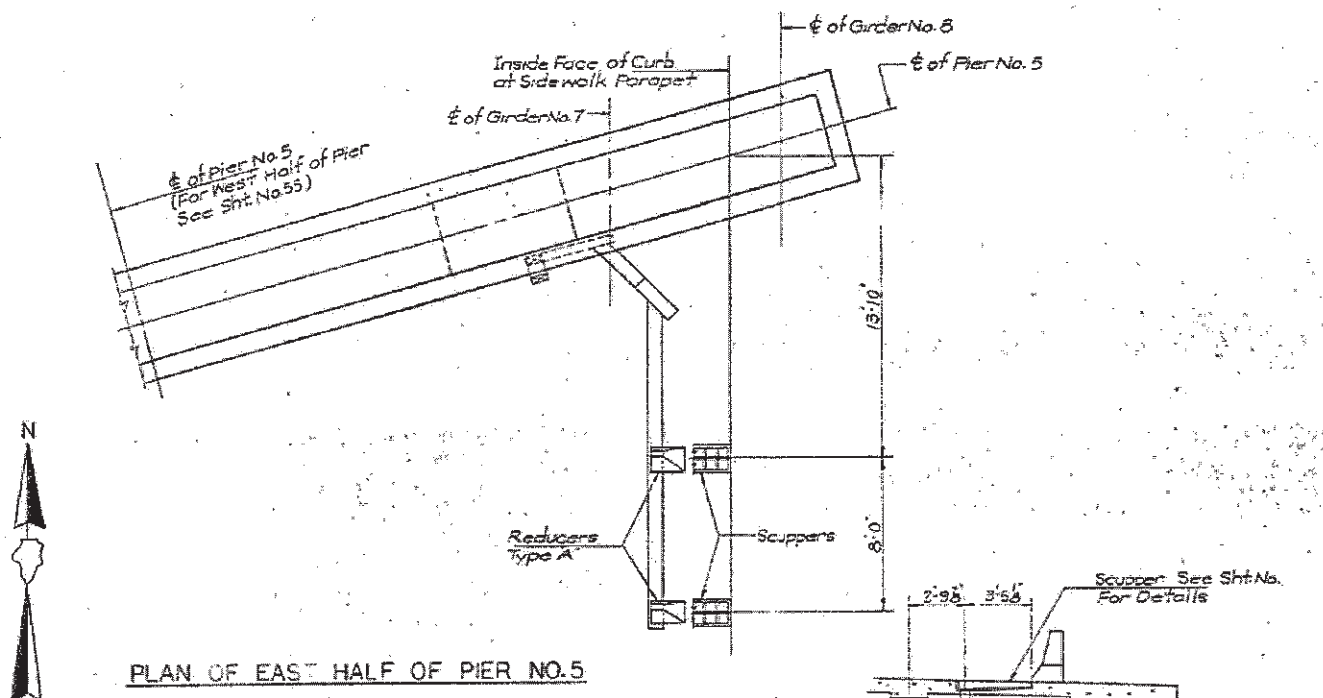
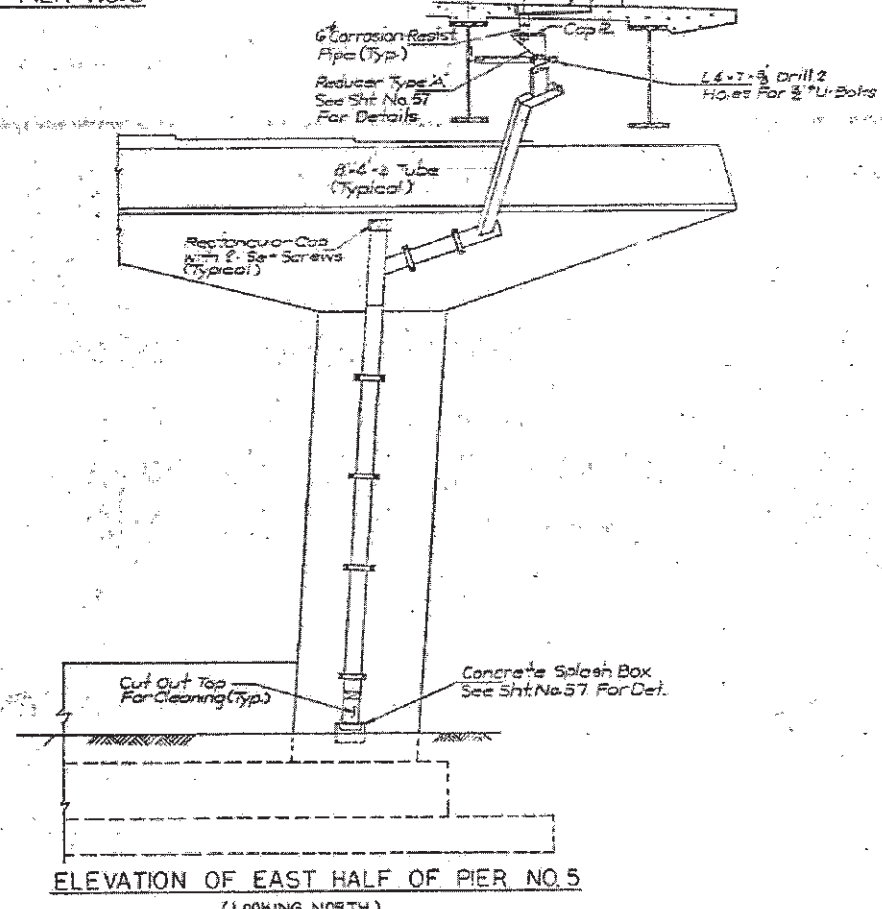


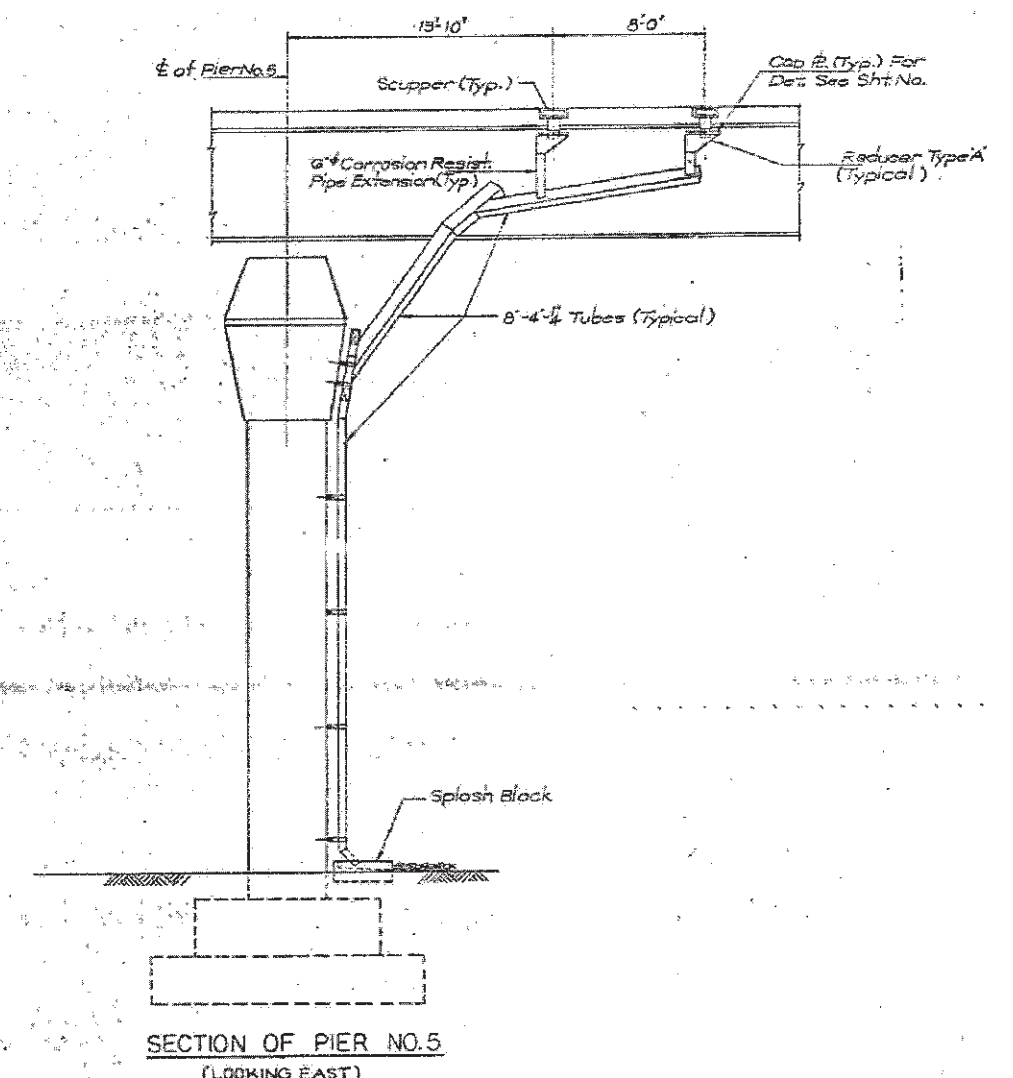
FOR INFORMATION ONLY



PLAN OF EAST HALF OF PIER NO. 5



ELEVATION OF EAST HALF OF PIER NO. 5
(LOOKING NORTH)



SECTION OF PIER NO. 5
(LOOKING EAST)

NOTES:

1. For actual location of drainage see Superstructure Plans.
2. For Drainage Details see Sht. No. 56.
3. Scuppers and Grates shall be ductile iron castings. Pipes, downspouts, including spacers, and accessories shall be Corrosion Resistant Steel. See Special Provision.
4. Furnishing and Erecting of Scuppers and Deck Drainage will be paid for at a Lump Sum Price for Deck Drainage System.
5. See Sht. No. 54 For Sect. A-A.

BRIDGE DECK DRAINAGE DETAILS

*1) FAU 2612
2) FAP 330

FILE NAME =	USER NAME = curryw	DESIGNED -	REVISED -	STATE OF ILLINOIS DEPARTMENT OF TRANSPORTATION	DRAINAGE REPAIRS (SN 016-2504)	F.A. RTE.	SECTION	COUNTY	TOTAL SHEETS	SHEET NO.	
o:\pwork\pudat\curryw\0829891\9\11322	2-Design.dgn	DRAWN -	REVISED -			*	2012-001-1	COOK	27	15	
PLOT SCALE = 100.0000' / 1"		CHECKED -	REVISED -			CONTRACT NO. 60T31		ILLINOIS FED. AID PROJECT			
PLOT DATE = 3/2/2012		DATE -	REVISED -			SCALE:	SHEET 10 OF 13 SHEETS	STA.	TO STA.		