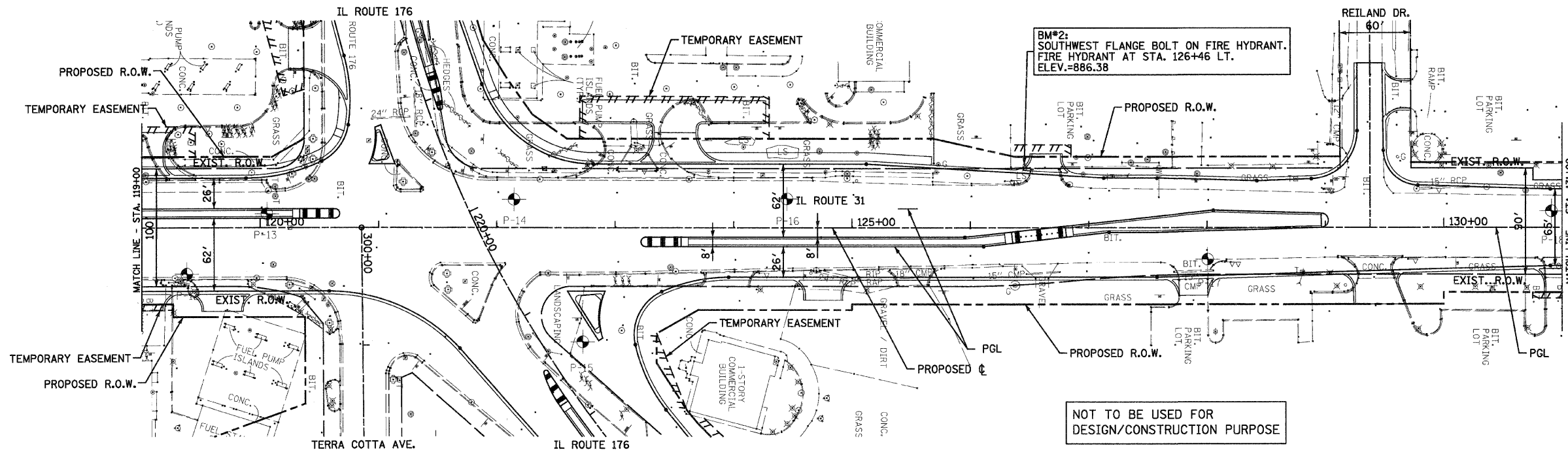
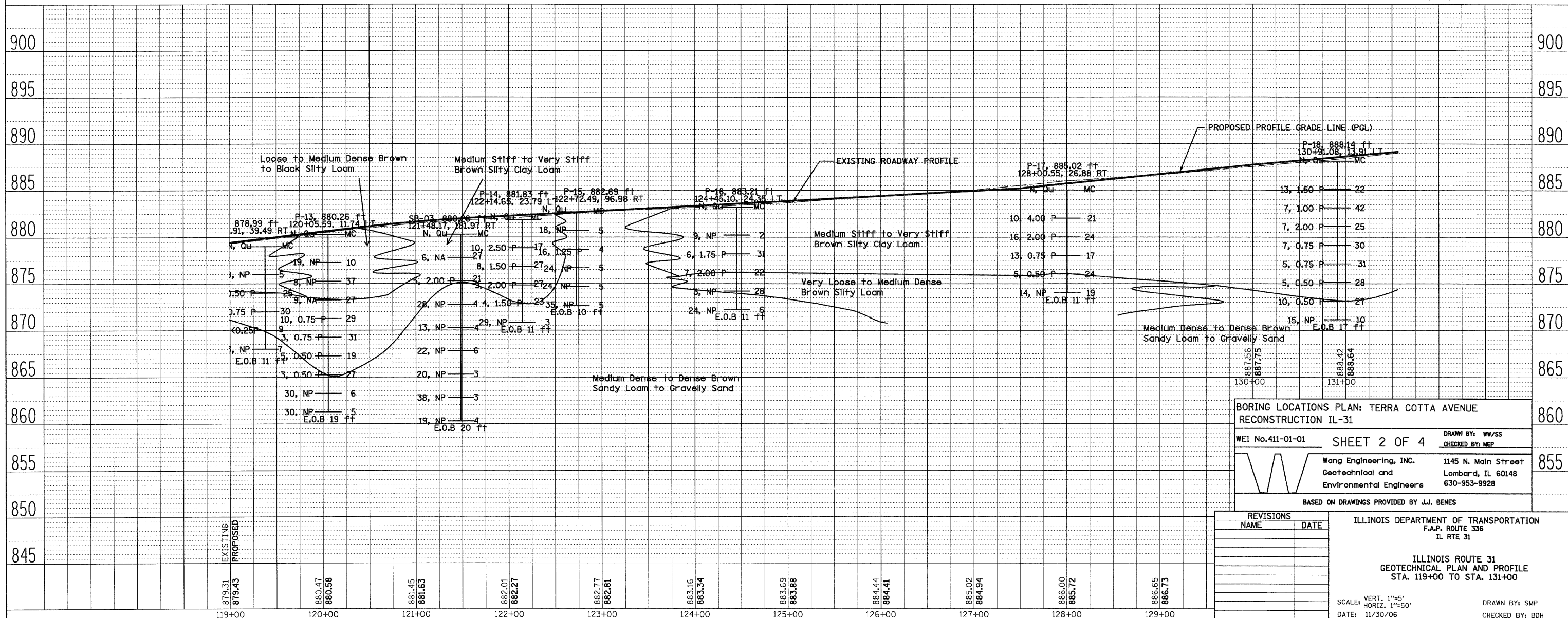


F.A.P. RTE.	SECTION	COUNTY	TOTAL SHEETS	SHEET NO.
336	112R-N	McHENRY	266	36
STA. 119+00		TO STA. 131+00		
FED. ROAD DIST. NO.		ILLINOIS		FED. AID PROJECT
CONTRACT NO. 62537				



DATE	BY
DATE	BY

DATE	BY
DATE	BY



BORING LOCATIONS PLAN: TERRA COTTA AVENUE RECONSTRUCTION IL-31

WEI No. 411-01-01 SHEET 2 OF 4

Wang Engineering, Inc. 1145 N. Main Street
Geotechnical and Environmental Engineers Lombard, IL 60148
630-953-9928

DRAWN BY: WW/SS
CHECKED BY: MEP

BASED ON DRAWINGS PROVIDED BY J.J. BENES

REVISIONS	NAME	DATE

ILLINOIS DEPARTMENT OF TRANSPORTATION
F.A.P. ROUTE 336
IL RTE 31

ILLINOIS ROUTE 31
GEOTECHNICAL PLAN AND PROFILE
STA. 119+00 TO STA. 131+00

SCALE: VERT. 1"=5'
HORIZ. 1"=50'

DATE: 11/30/06

DRAWN BY: SMP
CHECKED BY: BDH

879.31	880.47	881.45	882.01	882.77	883.16	883.69	884.44	885.02	886.00	886.65
879.43	880.58	881.63	882.27	882.81	883.34	883.88	884.41	884.94	885.72	886.73
119+00	120+00	121+00	122+00	123+00	124+00	125+00	126+00	127+00	128+00	129+00