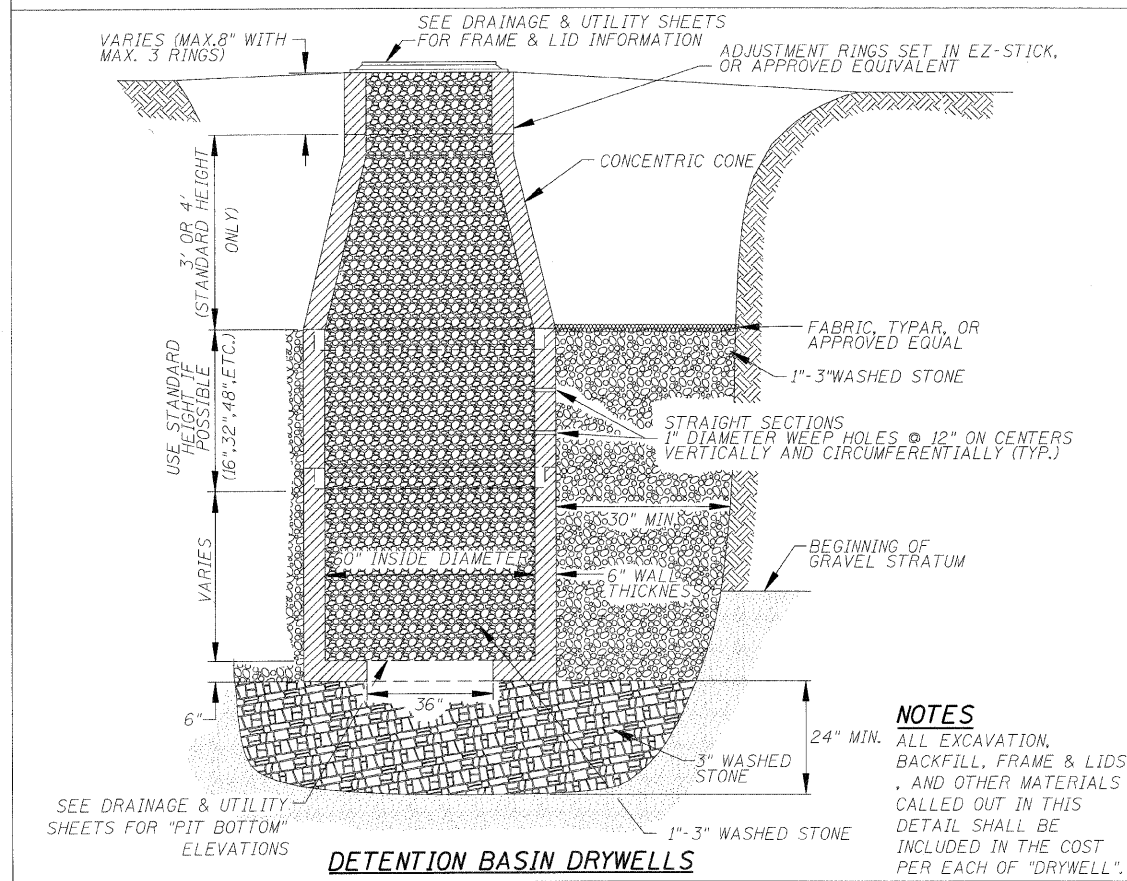


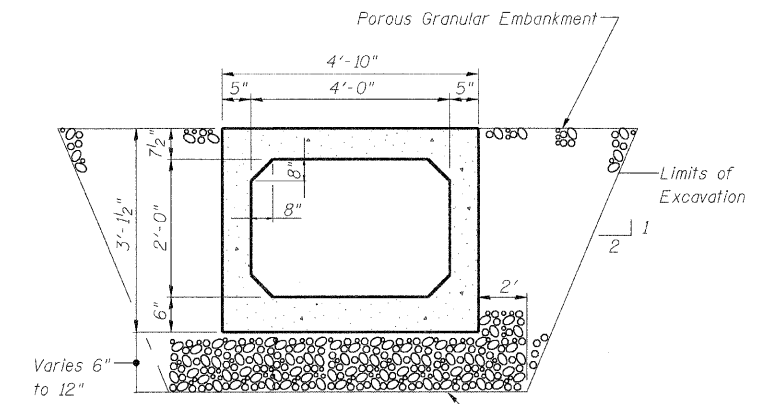
**MAINLINE DRYWELLS**

**NOTES**  
 ALL EXCAVATION, BACKFILL, FRAME & LIDS, AND OTHER MATERIALS CALLED OUT IN THIS DETAIL SHALL BE INCLUDED IN THE COST PER EACH OF "DRYWELL".



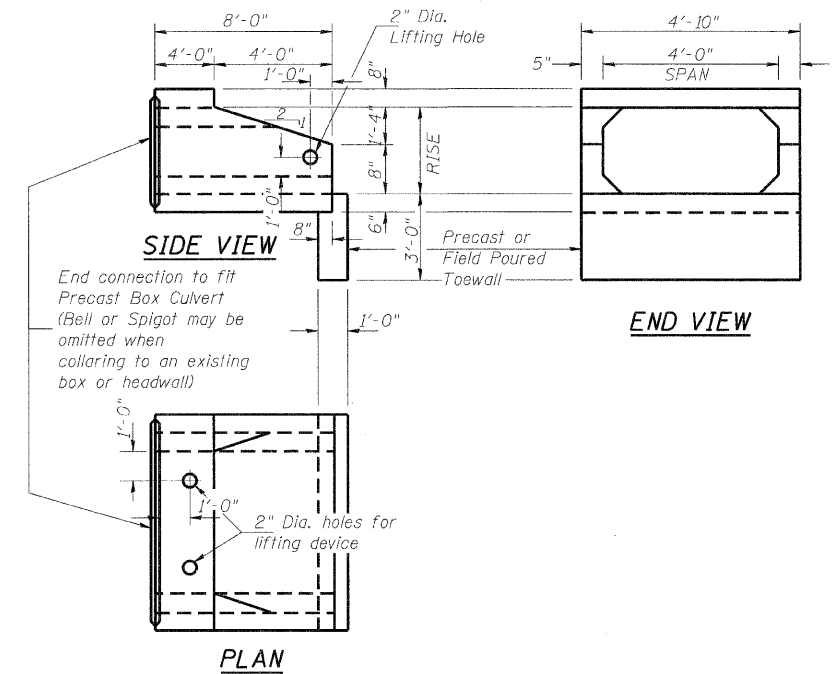
**DETENTION BASIN DRYWELLS**

**NOTES**  
 ALL EXCAVATION, BACKFILL, FRAME & LIDS, AND OTHER MATERIALS CALLED OUT IN THIS DETAIL SHALL BE INCLUDED IN THE COST PER EACH OF "DRYWELL".



**SECTION THRU BARREL**

(Precast)  
 AASHTO Designation: M273  
 ASTM Designation: C850



**PRECAST BOX CULVERT END SECTION**

**MARIETTA DRIVE  
 PRECAST BOX CULVERT & END SECTION  
 DETAILS**

**BILL OF MATERIAL**

ITEM	UNIT	TOTAL
Box Culvert End Sections	Each	2
Precast Concrete Box Culvert 4'x2'	Foot	94

**GENERAL NOTES**

Box Culvert End Sections shall conform to the requirements of article 540.06 of the Standard Specifications and the applicable requirements of AASHTO M273.  
 The minimum concrete strength shall be 5,000 psi.  
 Lifting holes shall be filled with concrete plugs and mastic after box sections are in place.  
 Reinforcement Bars shall conform to the requirements of AASHTO M-31M, M-42M or M-53M, Grade 420.

REVISIONS	
NAME	DATE

ILLINOIS DEPARTMENT OF TRANSPORTATION  
 F.A.P. ROUTE 336  
 IL RTE 31 AND IL RTE 176

CONSTRUCTION DETAILS

SCALE: NTS  
 DATE: 02/10/2012  
 DRAWN BY: SMP  
 CHECKED BY: BDH

DATE	
BY	
DESIGNED	
CHECKED	
PLANNED	
NOTED	
NO.	

DATE	
BY	
DESIGNED	
CHECKED	
PLANNED	
NOTED	
NO.	