

BEGIN CONSTRUCTION PROJECT STA: 1+05

CLASS D PATCHES, TYPE IV, 11' x 28 SQ.YD.

PROVIDE 12" CUTTING-IN SLEEVE PROVIDE 12"x10" TEE

EX. 12" D.I.W.M.

EX. 8" SANITARY SEWER

EX. 8" SANITARY SEWER

EX. 8" SANITARY SEWER

EX. 8" SANITARY SEWER

EX. 8" SANITARY SEWER

EX. 8" SANITARY SEWER

EX. 8" SANITARY SEWER

EX. 8" SANITARY SEWER

EX. 8" SANITARY SEWER

EX. 8" SANITARY SEWER

EX. 8" SANITARY SEWER

EX. 8" SANITARY SEWER

EX. 8" SANITARY SEWER

EX. 8" SANITARY SEWER

EX. 8" SANITARY SEWER

EX. 8" SANITARY SEWER

EX. 8" SANITARY SEWER

EX. 8" SANITARY SEWER

EX. 8" SANITARY SEWER

EX. 8" SANITARY SEWER

EX. 8" SANITARY SEWER

EX. 8" SANITARY SEWER

EX. 8" SANITARY SEWER

BARRINGTON AVE.

VAN BUREN ST.

RAILROAD ST.

MATCHLINE STA: 5+75

NOTE: UTILITY POLES SHOWN TO BE MOVED (M) ARE TO BE RELOCATED BY OTHERS.

PROVIDE 8"x4" REDUCER PROVIDE (2) 8", 45° BENDS [SS, 12" RCP x 48 LIN.FT. @ 9.04%]

PROVIDE 8" GATE VALVE AND VALVE VAULT STA=4+04.53, OFF=14.24' L RIM= 743.40

PR. STORM MH NO. 71 TYPE A (4' DIA), FRAME LID TYPE 1 (CLOSED) STA=4+16.17, OFF=8.79' R RIM ELEV = 742.04 12" INV = 734.25 (N) 12" INV = 738.16 (E) 15" INV = 734.25 (W)

1" COPPER WATER SERVICE CONNECTION, COMPLETE - 12 FOOT. PRO. FIRE HYDRANT STA=3+95.03 OFF=18.48' L

PR. CATCH BASIN NO. 132 TYPE C, FRAME & GRATE TYPE 3V STA=4+11.59, OFF=39.02' L RIM = 747.48 12" INV = 744.08 (S) 12" INV = 742.50 (W)

[SS, 12" RCP x 23 LIN.FT. @ 1.80%]

PR. INLET NO. 133 TYPE A, FRAME & GRATE TYPE 3V STA=4+34.91, OFF=39.29' L T/C = 747.57 12" INV = 744.50 (N) RIM ELEV = 742.82 8" INV = 738.92 (E) 8" INV = 735.54 (W) 8" INV = 735.87 (S)

PRO. FIRE HYDRANT STA=5+48.03 OFF=16.98' L

1" COPPER WATER SERVICE CONNECTION, COMPLETE - 13 FOOT.

1" COPPER WATER SERVICE CONNECTION, COMPLETE - 13 FOOT.

1" COPPER WATER SERVICE CONNECTION, COMPLETE - 13 FOOT.

1" COPPER WATER SERVICE CONNECTION, COMPLETE - 33 FOOT.

TO BE RELOCATED (BY OTHERS)

PR. INLET NO. 302 TYPE A, FRAME & GRATE TYPE 3V STA=2+37.53, OFF=22.26' R T/C = 741.92 12" INV = 739.00(S)

PROVIDE 10" GATE VALVE AND VALVE VAULT STA=0+60.20, OFF=6.50' L RIM= 742.46

EX. SANITARY MH RIM ELEV = 742.70 8" INV = 733.84 (S)

TO BE RELOCATED (BY OTHERS)

PR. CATCH BASIN NO. 87 TYPE C, FRAME & GRATE TYPE 3V STA=3+15.13, OFF=22.24' R RIM = 741.66 12" INV = 738.75 (S) 12" INV = 738.75 (N) [SS, 12" RCP x 102 LIN.FT. @ 4.41%]

PROVIDE 10" GATE VALVE AND VALVE VAULT STA=4+01.59 OFF=8.13' L RIM= 742.83

TO BE RELOCATED (BY OTHERS)

PROVIDE 10"x8" TEE

PR. CATCH BASIN NO. 84 TYPE C, FRAME & GRATE TYPE 3V STA=4+08.65, OFF=39.88' R RIM = 739.96 12" INV = 736.00 (S) [SS, 12" RCP x 7 LIN.FT. @ 0.98%]

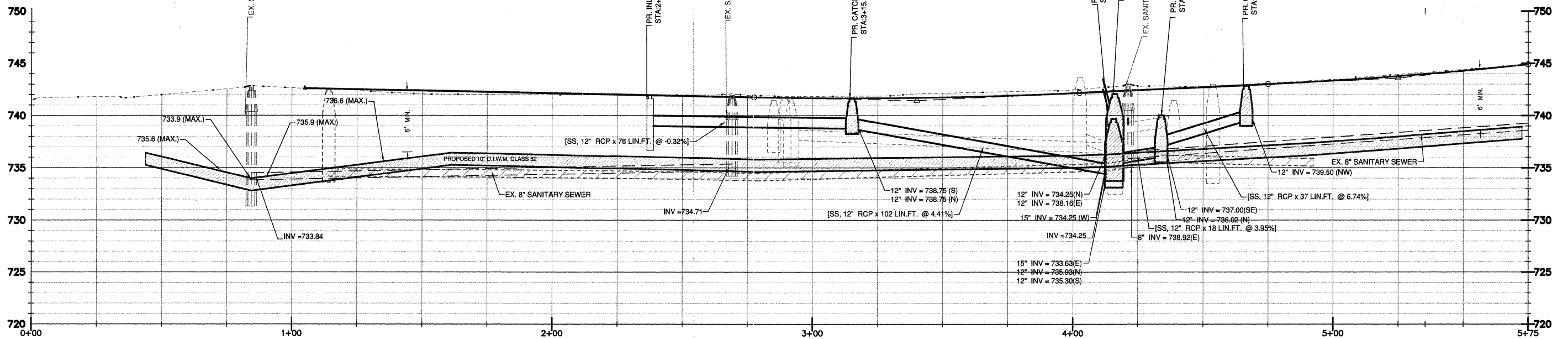
PR. STORM MH NO. 89 TYPE A (4' DIA), FRAME LID TYPE 1 (CLOSED) STA=4+15.76, OFF=40.09' R RIM ELEV = 739.68 15" INV = 733.63 (E) 12" INV = 735.93 (N) 12" INV = 735.30 (S) 8" INV = 733.43 (W) (VIF)

PR. CATCH BASIN NO. 85 TYPE C, FRAME & GRATE TYPE 3V STA=4+34.00, OFF=39.96' R RIM = 740.01 12" INV = 737.00 (SE) 12" INV = 736.02 (N) [SS, 12" RCP x 18 LIN.FT. @ 3.95%]

PR. CATCH BASIN NO. 86 TYPE C, FRAME & GRATE TYPE 3V STA=4+66.82, OFF=22.27' R RIM = 742.83 12" INV = 739.50 (NW) [SS, 12" RCP x 37 LIN.FT. @ 6.74%]

PIPE CROSSINGS		
NO.	DESCRIPTION	ELEV.
1	BOTTOM OF STORM SEWER	737.1
2	TOP OF WATER MAIN	735.6 (MAX)
3	BOTTOM OF SANITARY SEWER	735.4
4	TOP OF WATER MAIN	733.9 (MAX)
5	BOTTOM OF STORM SEWER	737.4
6	TOP OF WATER MAIN	735.9 (MAX)
7	BOTTOM OF STORM SEWER	738.1
8	TOP OF WATER MAIN	736.6 (MAX)
9	BOTTOM OF STORM SEWER	739.1
10	TOP OF WATER MAIN	737.6 (MAX)
11	BOTTOM OF SANITARY SEWER	739.4
12	TOP OF WATER MAIN	737.9 (MAX)
13	BOTTOM OF STORM SEWER	744.1
14	TOP OF SANITARY SEWER	741.6
15	BOTTOM OF STORM SEWER	735.5
16	TOP OF SANITARY SEWER	733.9

\* WATERMAIN IS TO BE ENCASED WITH WATER QUALITY PIPE 10' ON EITHER SIDE OF CROSSING



741.48	741.79	741.98	742.55	742.65	742.41	742.51	742.05	742.38	742.01	742.26	741.99	742.13	741.96	742.01	741.96	741.88	741.95	741.76	741.84	741.86	741.87	741.66	742.13	741.73	742.28	741.89	742.45	742.13	742.83	742.42	742.73	742.71	743.07	743.00	743.44	743.34	743.92	743.77	744.41	744.29	744.89
--------	--------	--------	--------	--------	--------	--------	--------	--------	--------	--------	--------	--------	--------	--------	--------	--------	--------	--------	--------	--------	--------	--------	--------	--------	--------	--------	--------	--------	--------	--------	--------	--------	--------	--------	--------	--------	--------	--------	--------	--------	--------