

STATE OF ILLINOIS
DEPARTMENT OF TRANSPORTATION
DIVISION OF HIGHWAYS

PLANS FOR PROPOSED
FEDERAL AID HIGHWAY

McCARTHY ROAD-(FROM DERBY ROAD TO ARCHER AVENUE)

FAU 1587 (McCARTHY ROAD)
FAP 577 (IL ROUTE 171) (ARCHER AVENUE)
FAU 1024 (DERBY ROAD)
SECTION 02-00055-00-WR
PROJECT HPP-M-8003(504)
CHANNELIZATION AND TRAFFIC SIGNAL INSTALLATION
VILLAGE OF LEMONT
COOK COUNTY
C-91-190-05

PROJECT LOCATION MAP

FAU RTE	SECTION	COUNTY	TOTAL SHEETS	SHEET NO.
VAR	02-00055-00-WR	COOK	84	1
F.H.W.A. REG.	ILLINOIS	PROJECT HPP-M-8003(504)		

CONTRACT NO. 63557



LOCATION OF SECTION INDICATED THIS: ■

INDEX OF SHEETS

SEE SHEET 2

INDEX OF DISTRICT 1 STANDARDS

SEE SHEET 2

INDEX OF HIGHWAY STANDARDS

SEE SHEET 2

TRAFFIC DATA

ADT:	EXISTING:	DESIGN:
McCARTHY ROAD	6,500 (2009)	8,500 (2027)
ARCHER AVENUE	12,400 (2009)	14,500 (2027)
DERBY ROAD	5,200 (2009)	6,500 (2027)

DESIGN DESIGNATION:

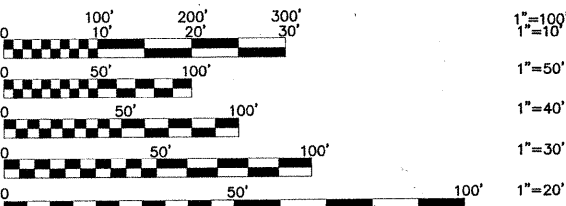
MINOR ARTERIAL
PRINCIPAL ARTERIAL
COLLECTOR

POSTED SPEED

40 MPH-McCARTHY ROAD (EXISTING)
45 MPH-ARCHER AVENUE (EXISTING)
40 MPH-DERBY ROAD (EXISTING)

DESIGN SPEED

45 MPH-McCARTHY ROAD (PROPOSED)
45 MPH-ARCHER AVENUE (PROPOSED)
45 MPH-DERBY ROAD (PROPOSED)



FULL SIZE PLANS HAVE BEEN PREPARED USING STANDARD ENGINEERING SCALES. REDUCED SIZED PLANS WILL NOT CONFORM TO STANDARD SCALES. IN MAKING MEASUREMENTS ON REDUCED PLANS, THE ABOVE SCALES MAY BE USED.

J.U.L.I.E.
JOINT
UTILITY
LOCATION
INFORMATION FOR
EXCAVATION
CALL 811



Know what's below.
Call before you dig.

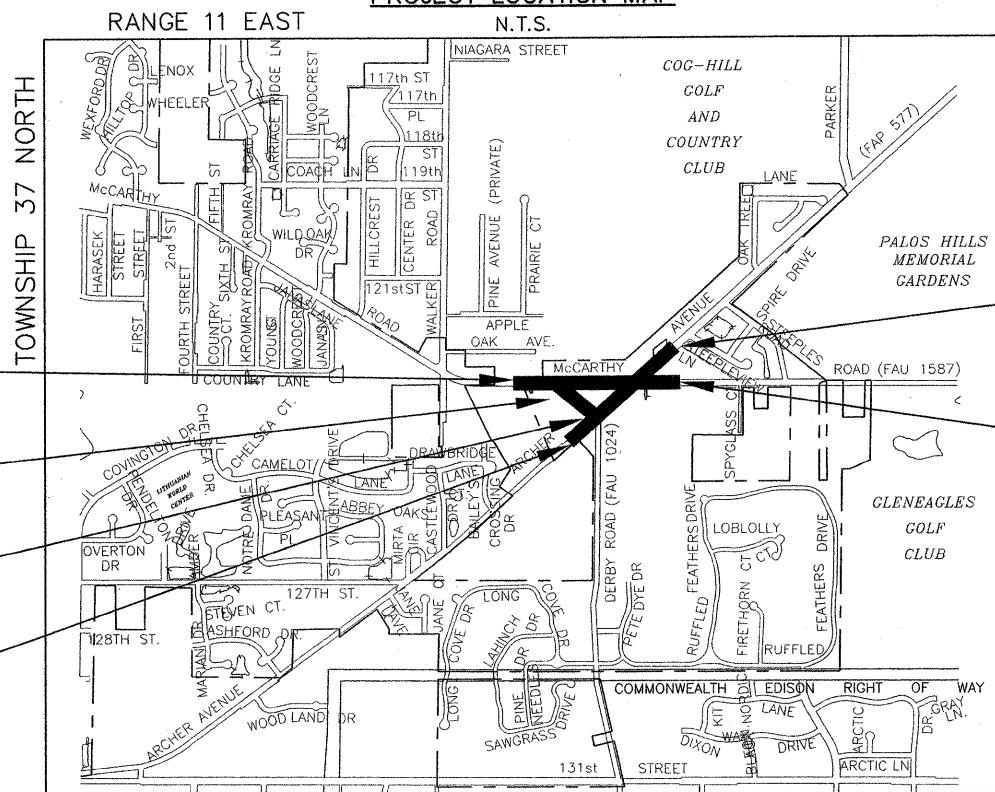
Frank Novotny & Associates, Inc.
Civil Engineers/Municipal Consultants
825 Midway Drive • Willowbrook, IL • 60527 • Telephone: (630) 887-8640 • Fax: (630) 887-0132
ILLINOIS PROFESSIONAL DESIGN FIRM NO. 184-000928

FNA PROJECT NO. 05027 DRAWN/DESIGNED JFP/JLC CHECKED/APPROVED THK/JLC

REVISIONS

NO.	BY	DATE	DESCRIPTION
1	THK	2-25-11	PER I.D.O.T. REVIEW
2	THK	3-17-11	PER I.D.O.T. REVIEW
3	THK	9-21-11	PER I.D.O.T. REVIEW
4	THK	10-31-11	PER I.D.O.T. REVIEW

CONTRACT NO. 63557



McCARTHY ROAD
PROJECT BEGINS
AT STA. 296+59

DERBY ROAD
PROJECT ENDS
AT STA. 55+53

DERBY ROAD
PROJECT BEGINS
AT STA. 49+24

ARCHER AVENUE
PROJECT BEGINS
AT STA. 149+41

ARCHER AVENUE
PROJECT ENDS
AT STA. 164+00

McCARTHY ROAD
PROJECT ENDS
AT STA. 323+23

PROJECT LOCATED IN
THE VILLAGE OF LEMONT

— DENOTES LOCATION OF IMPROVEMENT
IN LEMONT TOWNSHIP

LENGTH OF PROJECT

McCARTHY ROAD-	2,664 FEET (0.50 MILES)
ARCHER AVENUE-	1,459 FEET (0.28 MILES)
DERBY ROAD-	629 FEET (0.12 MILES)

GROSS LENGTH OF PROJECT 4,752 FEET (0.90 MILES)

STATE OF ILLINOIS
DEPARTMENT OF TRANSPORTATION
DIVISION OF HIGHWAYS

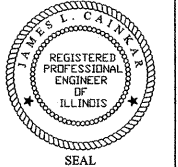
APPROVED October 31 2011
VILLAGE OF LEMONT Brian K. Reaves
BRIAN K. REAVES, VILLAGE MAYOR

PASSED NOVEMBER 2, 2011 2011
Chris Charnoch
DISTRICT 1 ENGINEER OF LOCAL ROADS & STREETS

RELEASING FOR BID
BASED ON LIMITED
REVIEW NOVEMBER 3, 2011
Diana M. O'Keefe
DEPUTY DIRECTOR OF HIGHWAYS, REGION 1 ENGINEER

CIVIL ENGINEER: SHEETS 1-45 AND 70-84

James L. Cainkar
JAMES L. CAINKAR, P.E.
IL. P.E. NO. 62-36190
EXPIRES 11-30-2011
10-31-11
DATE



TRAFFIC SIGNAL ENGINEER: SHEETS 46-69

Dana M. Schnabel
DANA M. SCHNABEL, P.E.
IL. P.E. NO. 062-054043
EXPIRES 11-30-2011
10-31-11
DATE



PRINTED BY THE AUTHORITY
OF THE STATE OF ILLINOIS

PROGRAM AND OFFICE ENGINEER: CHARLES F. RIDDLE, P.E. (847)705-4406 SCHAUMBURG, IL.