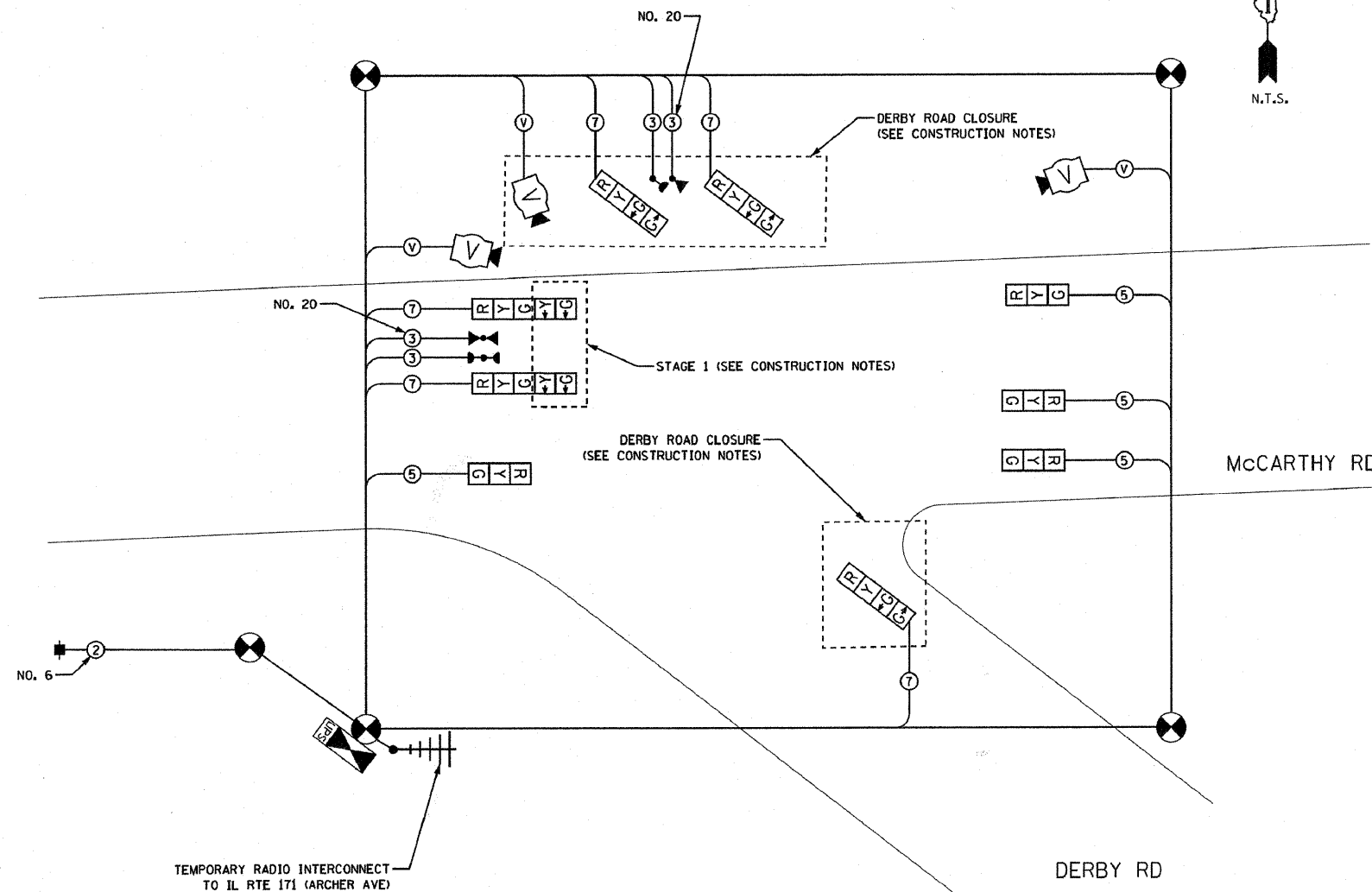


TEMPORARY CABLE PLAN



TEMPORARY RADIO INTERCONNECT TO IL RTE 171 (ARCHER AVE)

CONSTRUCTION NOTES

STAGE 1

LEFT TURN ARROWS FOR WB McCARTHY RD WILL BE DISCONNECTED AT THE CONTROLLER AND THE ARROW SECTIONS REMAIN BAGGED THRU STAGE 1.

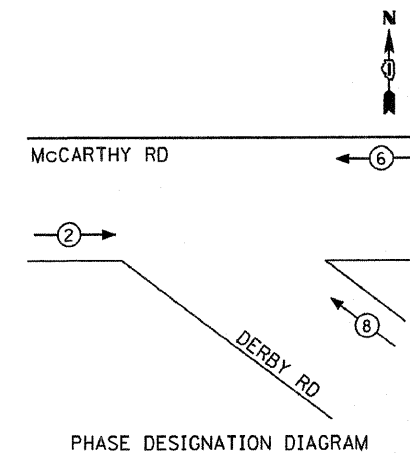
STAGE 2

UPON COMPLETION OF THE ROADWAY, THE AREA TRAFFIC ENGINEER WILL BE NOTIFIED PRIOR TO UN-BAGGING AND ACTIVATION OF THE LEFT-TURN ARROWS TO INTRODUCE THE LEFT-TURN PHASE.

DERBY ROAD CLOSURE

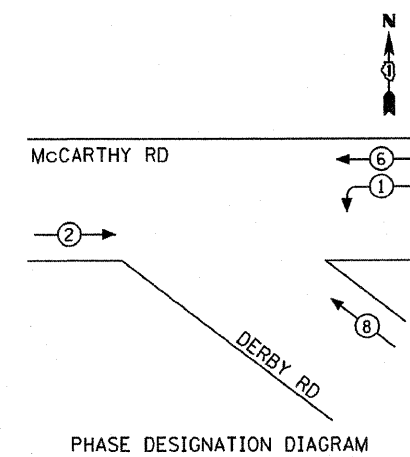
DURING THE TIME OF ROAD CLOSURE/DETOUR OF DERBY ROAD THE PHASING FOR NORTHBOUND TRAFFIC SHALL BE DISABLED AND THE SIGNAL HEADS REMAIN BAGGED UNTIL DERBY ROAD IS REOPENED TO TRAFFIC.

CONTROLLER SEQUENCE STAGE 1



PHASE DESIGNATION DIAGRAM

CONTROLLER SEQUENCE STAGE 2



PHASE DESIGNATION DIAGRAM

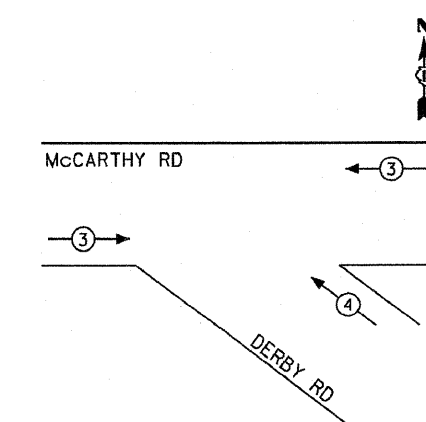
LEGEND

- ◉ DUAL ENTRY PHASE
- ◻ SINGLE ENTRY PHASE
- ◊ OL OVERLAP
- ◉-◉ PEDESTRIAN PHASE
- NUMBER REFERS TO ASSOCIATED PHASE

LEGEND

- ◉ DUAL ENTRY PHASE
- ◻ SINGLE ENTRY PHASE
- ◊ OL OVERLAP
- ◉-◉ PEDESTRIAN PHASE
- NUMBER REFERS TO ASSOCIATED PHASE

EMERGENCY VEHICLE PREEMPTION SEQUENCE



PROPOSED EMERGENCY VEHICLE PREEMPTORS		
EMERGENCY VEHICLE PREEMPTOR	3	4
MOVEMENT	←	↙

I.D.O.T. TRAFFIC SIGNAL INSTALLATION ELECTRICAL SERVICE REQUIREMENTS					TOTAL WATTAGE
TYPE	NO. LAMPS	WATTAGE (INCAND)	LED	% OPERATION	
SIGNAL (RED)	9		17	0.50	76.5
(YELLOW)	9		25	0.25	56.25
(GREEN)	6		15	0.25	22.5
ARROW	10		12	0.10	12.0
PED. SIGNAL			25	1.00	
CONTROLLER	1		100	1.00	100.0
ILLUM. SIGN				0.05	
VIDEO SYSTEM	1	150		1.00	150.0
FLASHER				0.50	
ENERGY COSTS TO: VILLAGE OF LEMONT, 418 MAIN STREET, LEMONT, ILLINOIS 60439					TOTAL = 417.25
ENERGY SUPPLY CONTACT: MARK ANDERSON, PHONE: (815) 724-5988, COMPANY: COM. ED.					

FILE NAME = ...signal\08-tmpcab McCDerb.dgn	USER NAME =	DESIGNED - GJG	REVISED - 2/25/2011
	PLOT SCALE =	DRAWN - GJG	REVISED -
	PLOT DATE = 3/1/2011	CHECKED - DMS	REVISED -
		DATE - 6/23/2010	REVISED -

STATE OF ILLINOIS
DEPARTMENT OF TRANSPORTATION

TEMPORARY CABLE PLAN, PHASE DESIGNATION DIAGRAM & EVP SEQUENCE
McCARTHY RD AT DERBY RD

SCALE: NONE SHEET NO. OF SHEETS STA. TO STA.

KLOAN
Kerig, Lindgren, O'Hara, Aboona, Inc.

9575 West Higgins Road, Suite 400
Rosemont, Illinois 60018
P: (847) 518-9990 F: (847) 518-9987
PROJECT # 10-001

F.A. RTE.	SECTION	COUNTY	TOTAL SHEETS	SHEET NO.
VAR.	02-00055-00-WR	COOK	84	53
CONTRACT NO. 63557				
FED. ROAD DIST. NO. ILLINOIS FED. AID PROJECT HPP-M-800315041				