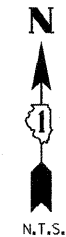
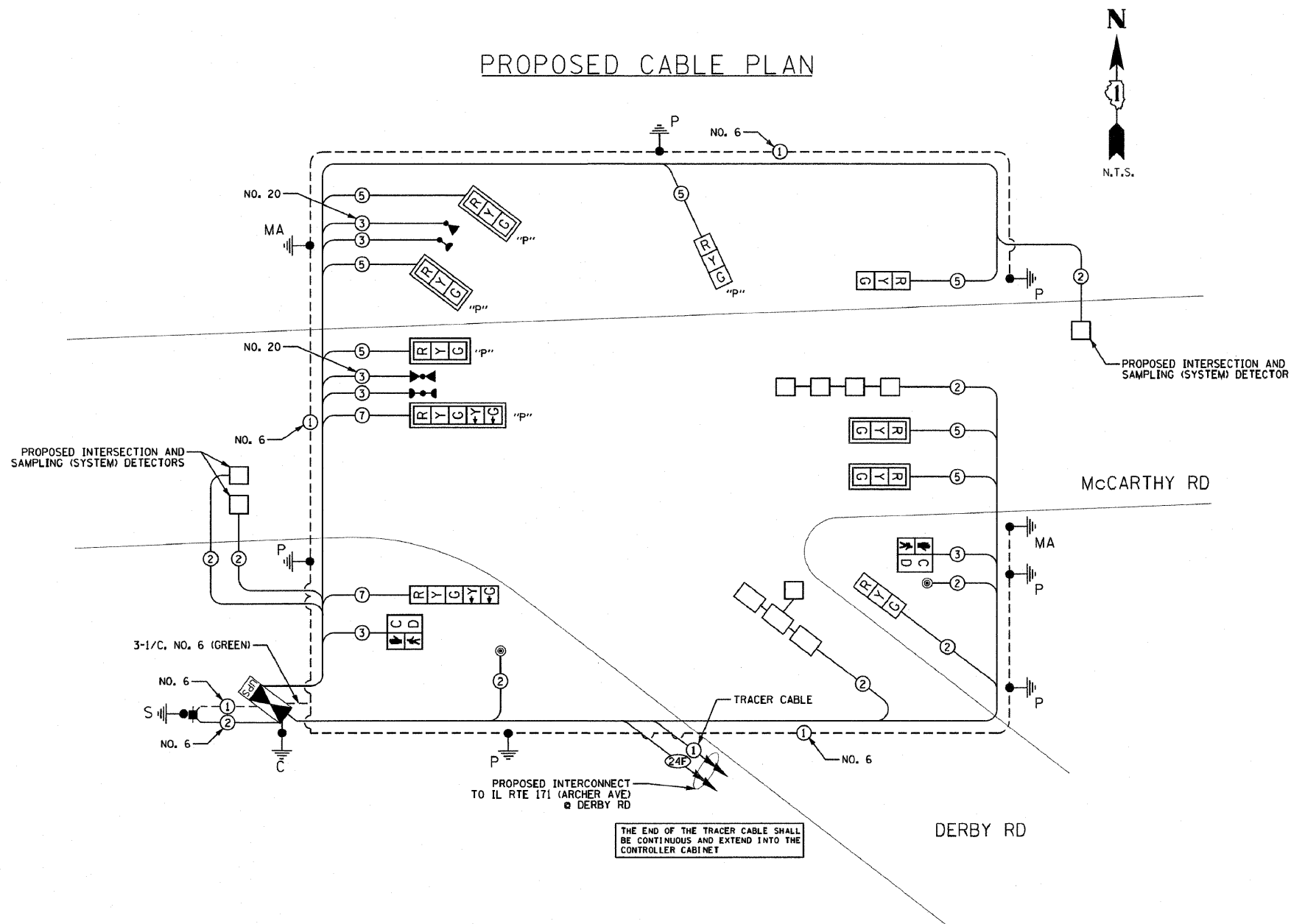


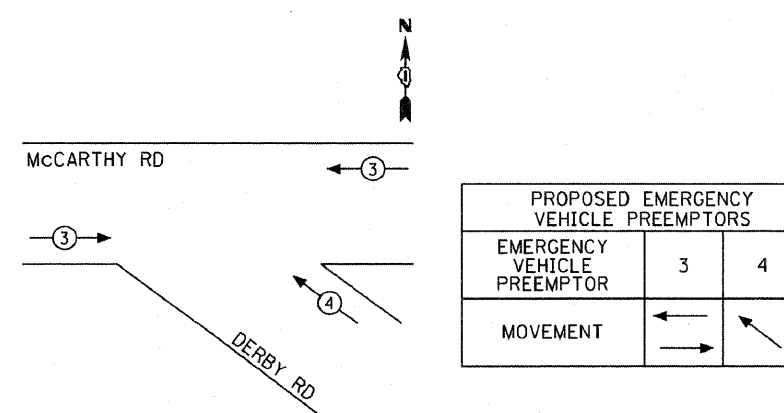
PROPOSED CABLE PLAN



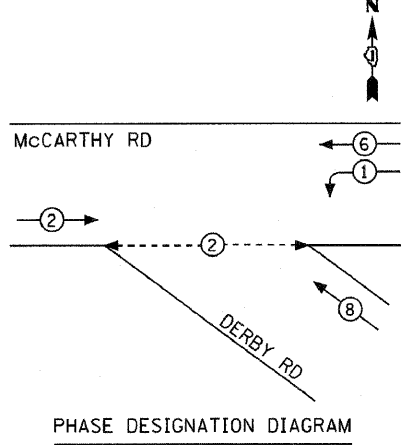
SCHEDULE OF QUANTITIES

QTY	UNIT	ITEM DESCRIPTION
22.5	SQ FT	SIGN PANEL - TYPE 1
1	EACH	SERVICE INSTALLATION, POLE MOUNTED
707	FOOT	UNDERGROUND CONDUIT, GALVANIZED STEEL, 2" DIA
97	FOOT	UNDERGROUND CONDUIT, GALVANIZED STEEL, 2 1/2" DIA
116	FOOT	UNDERGROUND CONDUIT, GALVANIZED STEEL, 3" DIA
194	FOOT	UNDERGROUND CONDUIT, GALVANIZED STEEL, 4" DIA
4	EACH	HANDHOLE
2	EACH	HEAVY-DUTY HANDHOLE
1	EACH	DOUBLE HANDHOLE
1	EACH	FULL-ACTUATED CONTROLLER AND TYPE IV CABINET
1	EACH	TRANSCEIVER - FIBER OPTIC
401	FOOT	ELECTRIC CABLE IN CONDUIT NO. 20 3/C, TWISTED, SHIELDED
181	FOOT	ELECTRIC CABLE IN CONDUIT, SIGNAL NO. 14 2C
596	FOOT	ELECTRIC CABLE IN CONDUIT, SIGNAL NO. 14 3C
1263	FOOT	ELECTRIC CABLE IN CONDUIT, SIGNAL NO. 14 5C
244	FOOT	ELECTRIC CABLE IN CONDUIT, SIGNAL NO. 14 7C
1218	FOOT	ELECTRIC CABLE IN CONDUIT, LEAD-IN, NO. 14 1 PAIR
134	FOOT	ELECTRIC CABLE IN CONDUIT, SERVICE, NO. 6 2C
597	FOOT	ELECTRIC CABLE IN CONDUIT, EQUIPMENT GROUNDING CONDUCTOR, NO. 6 1C
1	EACH	TRAFFIC SIGNAL POST, GALVANIZED STEEL 10 FT.
3	EACH	TRAFFIC SIGNAL POST, GALVANIZED STEEL 14 FT.
1	EACH	TRAFFIC SIGNAL POST, GALVANIZED STEEL 16 FT.
1	EACH	PEDESTRIAN PUSH-BUTTON POST, GALVANIZED STEEL, TYPE II
1	EACH	STEEL MAST ARM ASSEMBLY AND POLE, 22 FT.
1	EACH	STEEL MAST ARM ASSEMBLY AND POLE WITH DUAL MAST ARMS, 26 FT. AND 32 FT.
24	FOOT	CONCRETE FOUNDATION, TYPE A
4	FOOT	CONCRETE FOUNDATION, TYPE C
10	FOOT	CONCRETE FOUNDATION, TYPE E 30-INCH DIAMETER
12	FOOT	CONCRETE FOUNDATION, TYPE E 36-INCH DIAMETER
2	EACH	SIGNAL HEAD, LED, 1-FACE, 3-SECTION, MAST ARM MOUNTED
2	EACH	SIGNAL HEAD, LED, 1-FACE, 3-SECTION, BRACKET MOUNTED
1	EACH	SIGNAL HEAD, LED, 1-FACE, 5-SECTION, BRACKET MOUNTED
1	EACH	OPTICALLY PROGRAMMED SIGNAL HEAD, LED, 1-FACE, 3-SECTION, BRACKET MOUNTED
3	EACH	OPTICALLY PROGRAMMED SIGNAL HEAD, LED, 1-FACE, 3-SECTION, MAST ARM MOUNTED
1	EACH	OPTICALLY PROGRAMMED SIGNAL HEAD, LED, 1-FACE, 5-SECTION, MAST ARM MOUNTED
2	EACH	PEDESTRIAN SIGNAL HEAD, LED, 1-FACE, BRACKET MOUNTED WITH COUNTDOWN TIMER
6	EACH	TRAFFIC SIGNAL BACKPLATE, LOUVERED,
5	EACH	INDUCTIVE LOOP DETECTOR
397	FOOT	DETECTOR LOOP, TYPE I
2	EACH	LIGHT DETECTOR
1	EACH	LIGHT DETECTOR AMPLIFIER
2	EACH	PEDESTRIAN PUSH-BUTTON
1	EACH	TEMPORARY TRAFFIC SIGNAL INSTALLATION
1	EACH	REMOVE EXISTING TRAFFIC SIGNAL EQUIPMENT
4	EACH	REMOVE EXISTING HANDHOLE
1	EACH	TEMPORARY TRAFFIC SIGNAL TIMING
1	EACH	UNINTERRUPTIBLE POWER SUPPLY SPECIAL

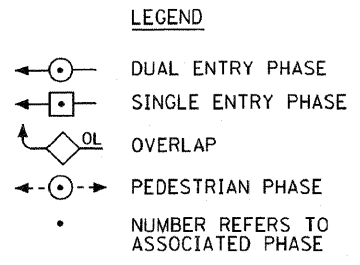
EMERGENCY VEHICLE PREEMPTION SEQUENCE



CONTROLLER SEQUENCE



PHASE DESIGNATION DIAGRAM



I.D.O.T. TRAFFIC SIGNAL INSTALLATION ELECTRICAL SERVICE REQUIREMENTS					TOTAL WATTAGE
TYPE	NO. LAMPS	WATTAGE (INCAND.)	LED	% OPERATION	
SIGNAL (RED)	10	17		0.50	85.0
(YELLOW)	10	25		0.25	62.5
(GREEN)	10	15		0.25	37.5
ARROW	4	12		0.10	4.8
PED. SIGNAL	2	25		1.00	50.0
CONTROLLER	1	100		1.00	100.0
ILLUM. SIGN				0.05	
VIDEO SYSTEM				1.00	
FLASHER				0.50	
TOTAL =					339.8

ENERGY COSTS TO: VILLAGE OF LEMONT, 418 MAIN STREET, LEMONT, ILLINOIS 60439

ENERGY SUPPLY CONTACT: MARK ANDERSON, (815) 724-5988, COM. ED.

FILE NAME = ...signal\55-cable McDerb.dgn	USER NAME =	DESIGNED - GJG	REVISED - 2/25/2011
		DRAWN - GJG	REVISED - 10/31/2011
		CHECKED - DMS	REVISED -
		DATE - 6/23/2010	REVISED -
	PLOT SCALE =		
	PLOT DATE = 10/31/2011		

STATE OF ILLINOIS DEPARTMENT OF TRANSPORTATION

CABLE PLAN, PHASE DESIGNATION DIAGRAM, EVP SEQUENCE & SCHEDULE OF QUANTITIES
McCARTHY RD AT DERBY RD

SCALE: NONE	SHEET NO. OF SHEETS	STA. TO STA.
-------------	---------------------	--------------

KLOA Kenig, Lindgren, O'Hara, Aboona, Inc.

9575 West Higgins Road, Suite 400, Rosemont, Illinois 60018
P: (847) 516-9900 F: (847) 518-9987 PROJECT # 10-001

F.A. RTE.	SECTION	COUNTY	TOTAL SHEETS	SHEET NO.
VAR.	02-00055-00-WR	COOK	84	55
CONTRACT NO. 63557				
FED. ROAD DIST. NO. ILLINOIS FED. AID PROJECT HPP-M-8003504				