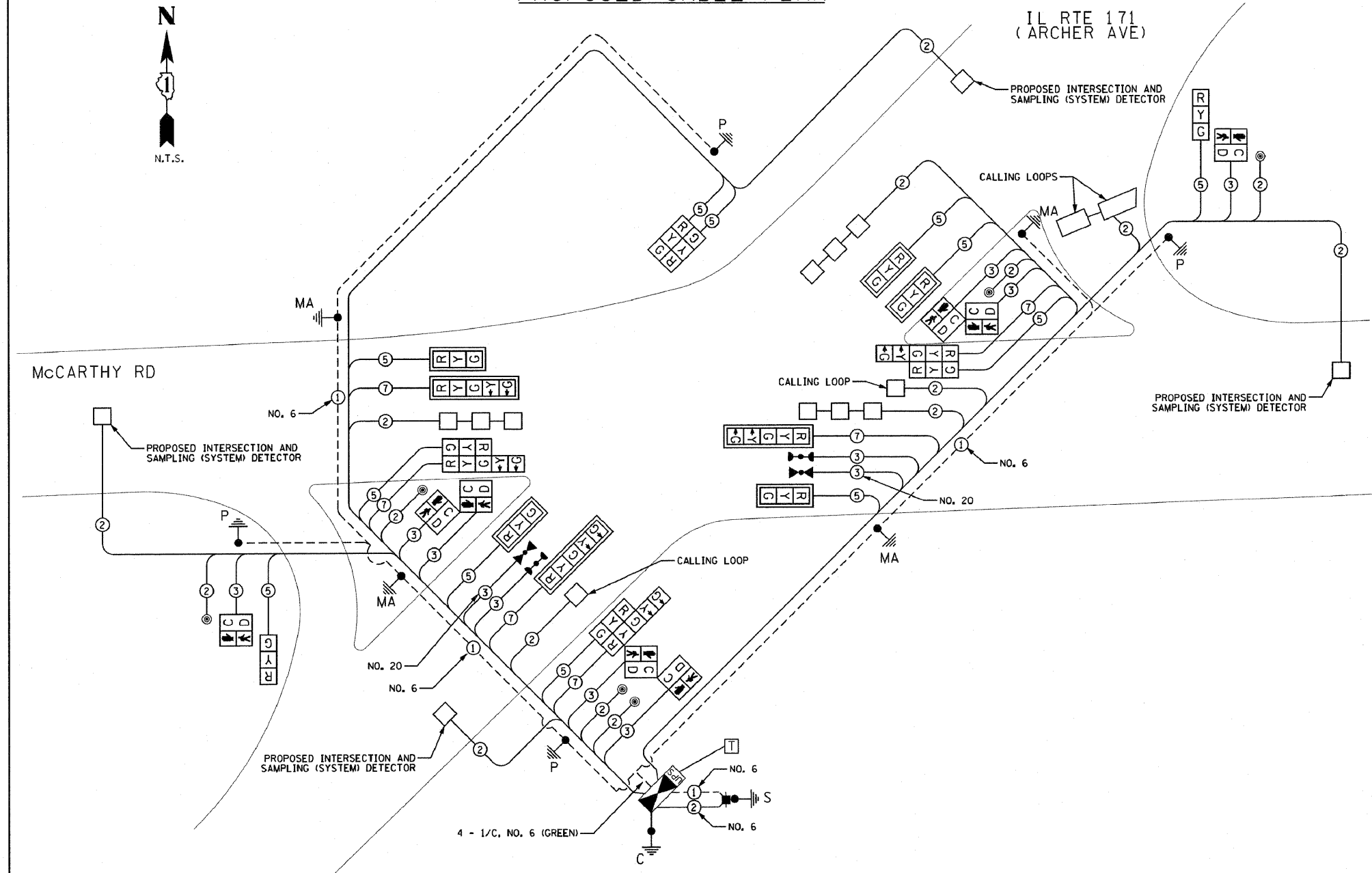


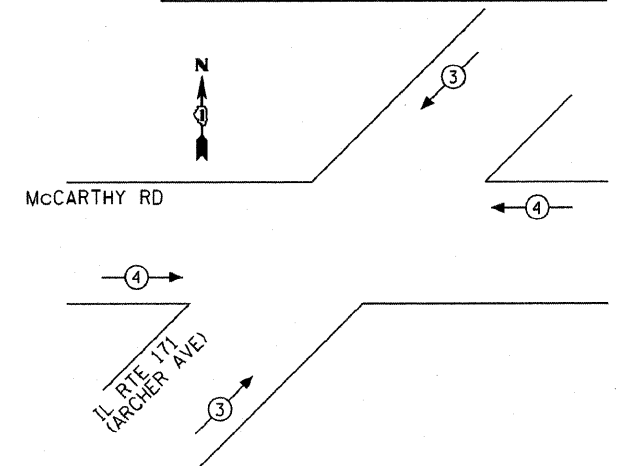
PROPOSED CABLE PLAN

SCHEDULE OF QUANTITIES



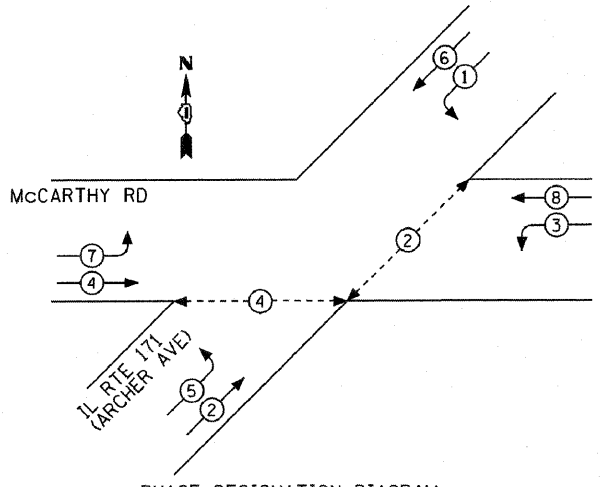
QTY	UNIT	ITEM DESCRIPTION
26	SQ FT	SIGN PANEL - TYPE 1
25	SQ FT	SIGN PANEL - TYPE 2
1	EACH	SERVICE INSTALLATION, POLE MOUNTED
1050	FOOT	UNDERGROUND CONDUIT, GALVANIZED STEEL, 2" DIA
80	FOOT	UNDERGROUND CONDUIT, GALVANIZED STEEL, 2 1/2" DIA
56	FOOT	UNDERGROUND CONDUIT, GALVANIZED STEEL, 3" DIA
520	FOOT	UNDERGROUND CONDUIT, GALVANIZED STEEL, 4" DIA
8	EACH	HANDHOLE
3	EACH	HEAVY-DUTY HANDHOLE
2	EACH	DOUBLE HANDHOLE
1	EACH	FULL-ACTUATED CONTROLLER AND TYPE V CABINET
1	EACH	MASTER CONTROLLER
1	EACH	TRANSCIVER - FIBER OPTIC
300	FOOT	ELECTRIC CABLE IN CONDUIT NO. 20 3/C, TWISTED, SHIELDED
800	FOOT	ELECTRIC CABLE IN CONDUIT, SIGNAL NO. 14 2C
1461	FOOT	ELECTRIC CABLE IN CONDUIT, SIGNAL NO. 14 3C
2313	FOOT	ELECTRIC CABLE IN CONDUIT, SIGNAL NO. 14 5C
941	FOOT	ELECTRIC CABLE IN CONDUIT, SIGNAL NO. 14 7C
2468	FOOT	ELECTRIC CABLE IN CONDUIT, LEAD-IN, NO. 14 1 PAIR
46	FOOT	ELECTRIC CABLE IN CONDUIT, SERVICE, NO. 6 2C
686	FOOT	ELECTRIC CABLE IN CONDUIT, EQUIPMENT GROUNDING CONDUCTOR, NO. 6 1C
3	EACH	TRAFFIC SIGNAL POST, GALVANIZED STEEL 14 FT.
1	EACH	TRAFFIC SIGNAL POST, GALVANIZED STEEL 16 FT.
2	EACH	STEEL MAST ARM ASSEMBLY AND POLE, 28 FT.
1	EACH	STEEL MAST ARM ASSEMBLY AND POLE, 34 FT.
1	EACH	STEEL MAST ARM ASSEMBLY AND POLE, 44 FT.
16	FOOT	CONCRETE FOUNDATION, TYPE A
4	FOOT	CONCRETE FOUNDATION, TYPE C
34	FOOT	CONCRETE FOUNDATION, TYPE E 30-INCH DIAMETER
13	FOOT	CONCRETE FOUNDATION, TYPE E 36-INCH DIAMETER
5	EACH	SIGNAL HEAD, LED, 1-FACE, 3-SECTION, MAST ARM MOUNTED
2	EACH	SIGNAL HEAD, LED, 1-FACE, 3-SECTION, BRACKET MOUNTED
3	EACH	SIGNAL HEAD, LED, 1-FACE, 5-SECTION, MAST ARM MOUNTED
1	EACH	SIGNAL HEAD, LED, 2-FACE, 3-SECTION, BRACKET MOUNTED
3	EACH	SIGNAL HEAD, LED, 2-FACE, 1-3 SECTION, 1-5 SECTION, BRACKET MOUNTED
2	EACH	PEDESTRIAN SIGNAL HEAD, LED, 1-FACE, BRACKET MOUNTED WITH COUNTDOWN TIMER
3	EACH	PEDESTRIAN SIGNAL HEAD, LED, 2-FACE, BRACKET MOUNTED WITH COUNTDOWN TIMER
8	EACH	TRAFFIC SIGNAL BACKPLATE, LOUVERED
10	EACH	INDUCTIVE LOOP DETECTOR
570	FOOT	DETECTOR LOOP, TYPE I
2	EACH	LIGHT DETECTOR
1	EACH	LIGHT DETECTOR AMPLIFIER
6	EACH	PEDESTRIAN PUSH-BUTTON
1	EACH	TEMPORARY TRAFFIC SIGNAL INSTALLATION
1	EACH	REMOVE EXISTING TRAFFIC SIGNAL EQUIPMENT
9	EACH	REMOVE EXISTING HANDHOLE
1	EACH	TEMPORARY TRAFFIC SIGNAL TIMING
1	EACH	UNINTERRUPTIBLE POWER SUPPLY SPECIAL

EMERGENCY VEHICLE PREEMPTION SEQUENCE

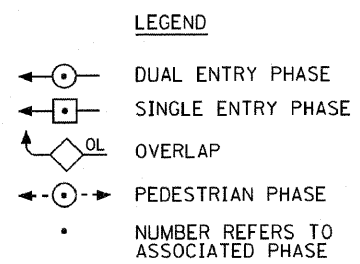


PROPOSED EMERGENCY VEHICLE PREEMPTORS		
EMERGENCY VEHICLE PREEMPTOR	3	4
MOVEMENT	↙ ↘	← →

CONTROLLER SEQUENCE



PHASE DESIGNATION DIAGRAM



I.D.O.T. TRAFFIC SIGNAL INSTALLATION ELECTRICAL SERVICE REQUIREMENTS				TOTAL WATTAGE
TYPE	NO. LAMPS	WATTAGE (INCAND.)	% OPERATION	
SIGNAL (RED)	18	17	0.50	153.0
(YELLOW)	18	25	0.25	112.5
(GREEN)	18	15	0.25	67.5
ARROW	12	12	0.10	14.4
PED. SIGNAL	8	25	1.00	200.0
CONTROLLER	1	100	1.00	100.0
ILLUM. SIGN			0.05	
VIDEO SYSTEM			1.00	
FLASHER			0.50	
ENERGY COSTS TO:				TOTAL = 620.4
VILLAGE OF LEMONT 418 MAIN STREET LEMONT, ILLINOIS 60439				
ENERGY SUPPLY CONTACT:	MARK ANDERSON			
PHONE:	(815) 724-5988			
COMPANY:	COM. ED.			

FILE NAME =	USER NAME =	DESIGNED -	GJG	REVISED -	2/25/2011
...signal\65-cable ArchMcC.dgn		DRAWN -	GJG	REVISED -	10/31/2011
	PLOT SCALE =	CHECKED -	DMS	REVISED -	
	PLOT DATE = 10/31/2011	DATE -	6/23/2010	REVISED -	

STATE OF ILLINOIS
DEPARTMENT OF TRANSPORTATION

CABLE PLAN, PHASE DESIGNATION DIAGRAM,
EVP SEQUENCE & SCHEDULE OF QUANTITIES
IL RTE 171 (ARCHER AVE) AT MCCARTHY RD

SCALE: NONE SHEET NO. OF SHEETS STA. TO STA.

KLOA
Kenig, Lindgren, O'Hara, Aboum, Inc.

9575 West Higgins Road, Suite 400
Rosemont, Illinois 60018
P: (847) 518-9990 F: (847) 518-9987

PROJECT # 10-001

F.A. RTE.	SECTION	COUNTY	TOTAL SHEETS	SHEET NO.
VAR.	02-00055-00-WR	COOK	84	65

CONTRACT NO. 63557
FED. ROAD DIST. NO. [ILLINOIS] FED. AID PROJECT HPP-M-800315041