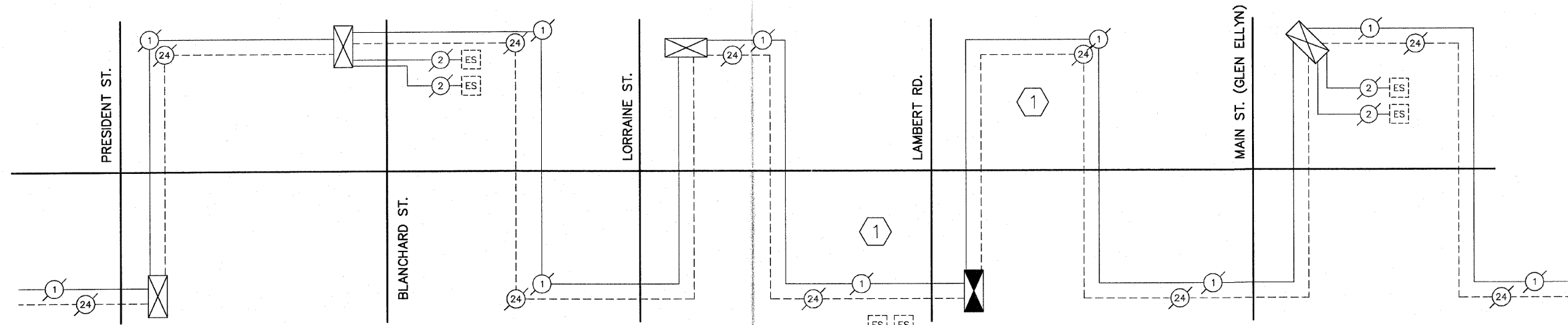
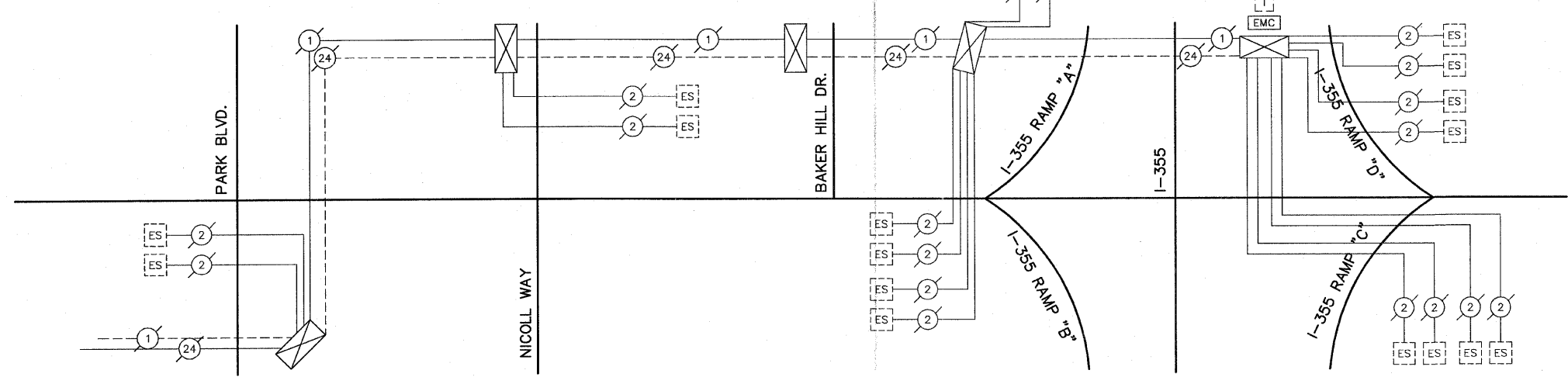


ILLINOIS ROUTE 38 (ROOSEVELT ROAD)



ILLINOIS ROUTE 38 (ROOSEVELT ROAD)



SCHEDULE OF QUANTITIES

ITEM	UNIT	TOTAL
MAINTENANCE OF EXISTING TRAFFIC SIGNAL INSTALLATION	EACH	2
REMOVE & REINSTALL ELECTRIC CABLE FROM CONDUIT	FOOT	713
RE-OPTIMIZE TRAFFIC SIGNAL SYSTEM LEVEL 1	EACH	1
REMOVE & REINSTALL FIBER OPTIC CABLE IN CONDUIT	L SUM	1

Note for Interconnect Schematic  
 ① EXISTING FIBER OPTIC CABLE AND TRACER WIRE TO BE PULLED BACK TO THE EXISTING INTERSECTION HANDHOLES AT STATION 639+85 (WB FAR OUT LOOP DETECTORS) AND AT STATION 634+51 (EB FAR OUT LOOP DETECTORS). THE FIBER OPTIC CABLE AND TRACER WIRE SHALL BE REINSTALLED TO THE NEW CONTROL CABINET AT LAMBERT ROAD

FILE NAME =  
 P:\03\03040036\cod\phase 2\dwg\040036-sh1-interconnect.dwg  
 Feb 06, 2012 at 10:53  
 Layout: 18-Proposed Interconnect Schematic

USER NAME =  
 DESIGNED -- JAS  
 DRAWN -- SS  
 CHECKED -- DY  
 DATE -- 6/29/09

REVISED --  
 REVISED --  
 REVISED --  
 REVISED --

STATE OF ILLINOIS  
 DEPARTMENT OF TRANSPORTATION



INTERCONNECT SCHEMATIC  
 IL RTE 38 (ROOSEVELT) FROM  
 CARLTON AVE TO I-355 (E. RAMP)

SCALE: NONE SHEET NO. OF SHEETS STA. TO STA.

F.A.U. RTE.	SECTION	COUNTY	TOTAL SHEETS	SHEET NO.
2567	05-00069-00-CH	DuPAGE	42	18
FED. ROAD DIST. NO.		ILLINOIS FED. AID PROJECT		
		CONTRACT NO. 63567		