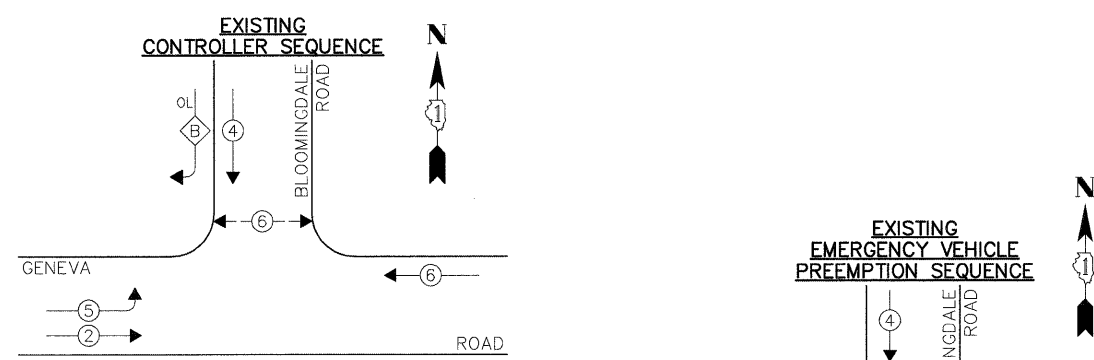
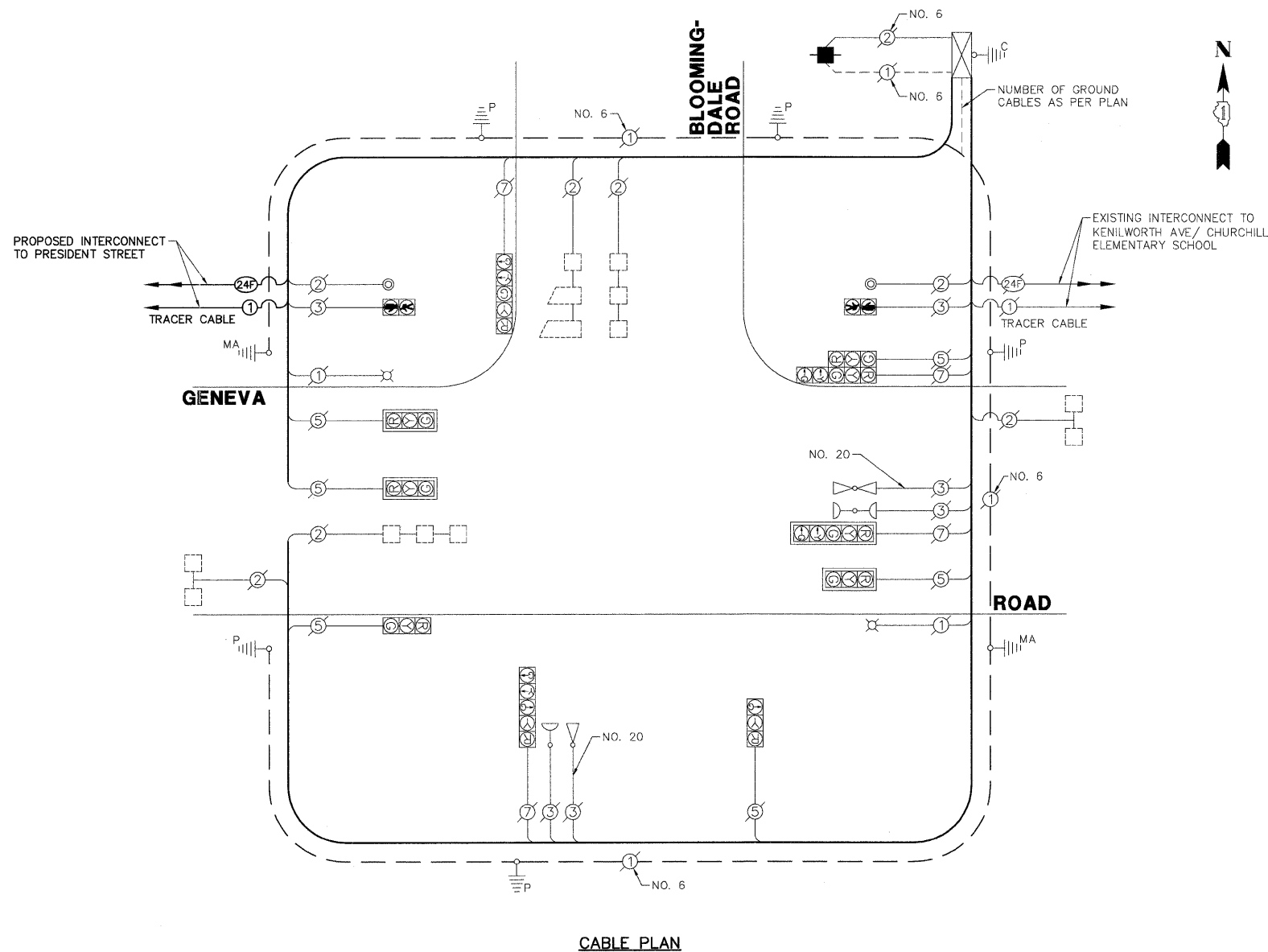


SCHEDULE OF QUANTITIES
GENEVA ROAD AT BLOOMINGDALE ROAD

NO.	QUANT.	UNIT	DESCRIPTION
1.	2	CU YD	EARTH EXCAVATION
2.	195	SQ FT	PORTLAND CEMENT CONCRETE SIDEWALK 5 INCH
3.	36	SQ FT	DETECTABLE WARNINGS
4.	150	SQ FT	SIDEWALK REMOVAL
5.	1	EACH	SERVICE INSTALLATION - POLE MOUNTED
6.	1	EACH	MAINTENANCE OF EXISTING TRAFFIC SIGNAL INSTALLATION
7.	1	EACH	TRAFFIC SIGNAL POST, GALVANIZED STEEL 14 FT.
8.	2	EACH	TRAFFIC SIGNAL POST, GALVANIZED STEEL 16 FT.
9.	4	EACH	RELOCATE EXISTING SIGNAL HEAD
10.	1	EACH	REMOVE EXISTING TRAFFIC SIGNAL EQUIPMENT
11.	1	EACH	REMOVE EXISTING SERVICE INSTALLATION



EXISTING EMERGENCY VEHICLE PREEMPTORS			
EMERGENCY VEHICLE PREEMPTOR	3	4	
MOVEMENT	←	→	↓

I.D.O.T. TRAFFIC SIGNAL INSTALLATION ELECTRICAL SERVICE REQUIREMENTS					TOTAL WATTAGE
TYPE	NO. LAMPS	INCAND.	L.E.D.	% OPERATION	
SIGNAL (RED)	10	135	17	0.50	85.0
SIGNAL (YELLOW)	10	135	25	0.25	62.5
SIGNAL (GREEN)	10	135	15	0.25	37.5
ARROW	9	135	12	0.10	10.8
PED. SIGNAL	2	90	25	1.00	50.0
CONTROLLER	1	-	100	1.00	100.0
LUMINAIRE	2	250	-	0.50	250.0
L.E.D. ST. NAME SIGN	-	-	64	0.50	-
VIDEO SYSTEM	-	-	150	1.00	-
BATTERY BACKUP	-	-	25	1.00	-
ILLUMINATED SIGN	-	-	25	0.05	-
TOTAL =					595.8

ENERGY COSTS - BILLED TO: VILLAGE OF GLEN ELLYN
(ADDRESS) 20 S. LAMBERT ROAD
(ADDRESS) GLEN ELLYN, IL 60137
ENERGY SUPPLY - CONTACT: MS. DEB RANKIN
PHONE: (630) 691-4379
COMPANY: COM-ED

THE TRAFFIC SIGNAL CONTROL EQUIPMENT FOR THIS PROJECT SHALL BE "ECONOLITE" TO MATCH THE EXISTING ADJACENT SYSTEM.

FILE NAME = 4281.800-TR1.dwg	USER NAME = ZACH WALLSTEN	DESIGNED - JRD	REVISED -
	PLOT SCALE = 1" = .0833'	DRAWN - ZCW	REVISED -
	PLOT DATE = 12/16/2011	CHECKED - KLB	REVISED -
		DATE - 12/16/2011	REVISED -

STATE OF ILLINOIS
DEPARTMENT OF TRANSPORTATION

SCHEDULE OF QUANTITIES, CABLE PLAN, PHASE DESIGNATION DIAGRAM, & EMERGENCY VEHICLE PREEMPTION SEQUENCE
GENEVA ROAD AT BLOOMINGDALE ROAD

SCALE: N.A. SHEET NO. OF SHEETS STA. TO STA.

FAU. RTE. 1397	SECTION 09-00206-08-TL	COUNTY DuPAGE	TOTAL SHEETS 53	SHEET NO. 16
ILLINOIS FED. AID PROJECT			CONTRACT #: 63625	

GHA #4281.800