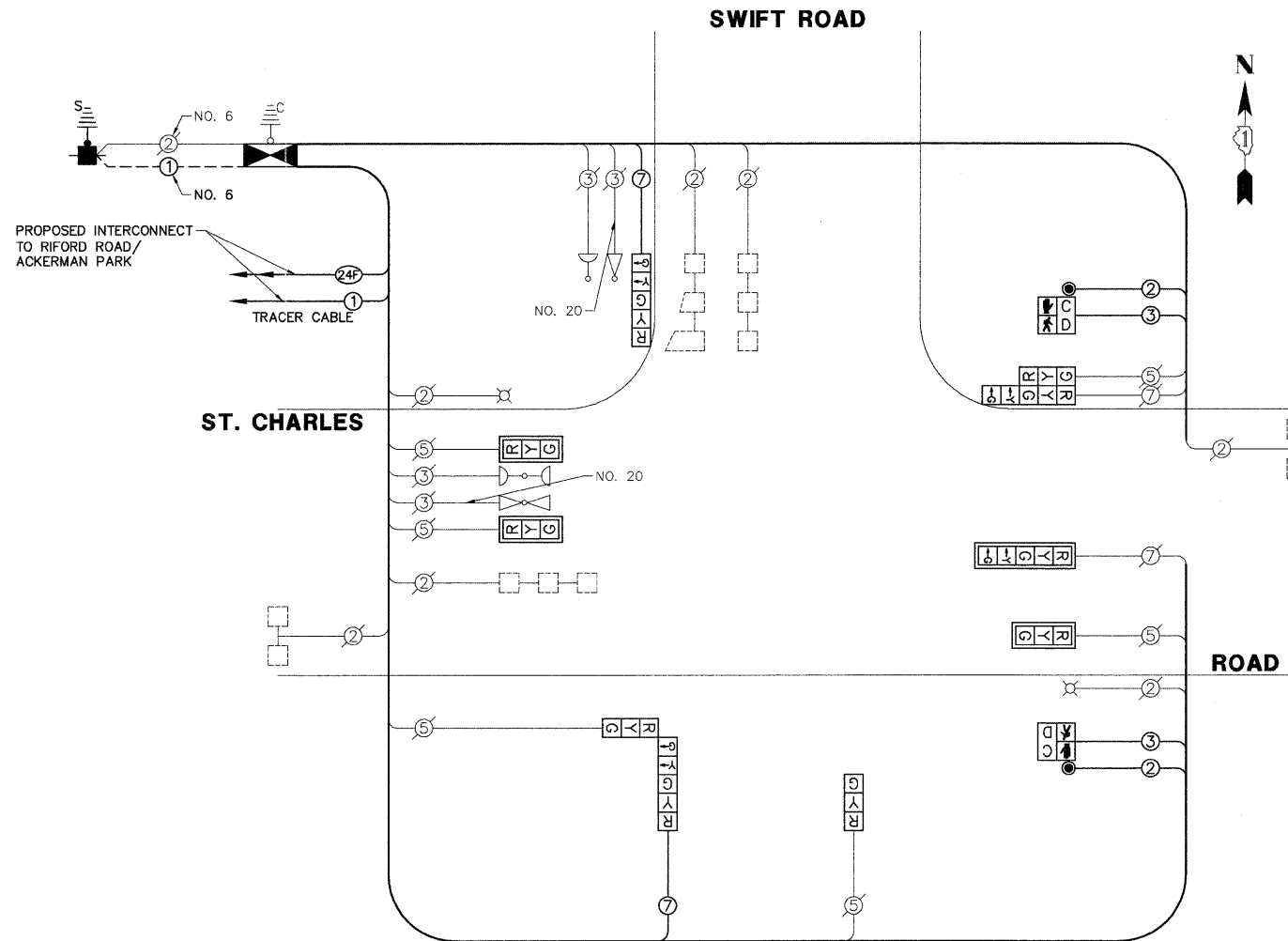


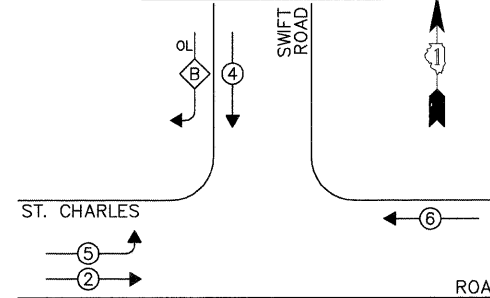
SCHEDULE OF QUANTITIES
ST. CHARLES ROAD AT SWIFT ROAD

NO.	QUANT.	UNIT	DESCRIPTION
1.	12	CU YD	EARTH EXCAVATION
2.	305	SQ FT	PORTLAND CEMENT CONCRETE SIDEWALK 5 INCH
3.	24	SQ FT	DETECTABLE WARNINGS
4.	50	FOOT	COMBINATION CURB AND GUTTER REMOVAL
5.	50	FOOT	COMBINATION CONCRETE CURB AND GUTTER, TYPE B-6.12
6.	155	FOOT	THERMOPLASTIC PAVEMENT MARKING - LINE 6"
7.	1	EACH	SERVICE INSTALLATION - POLE MOUNTED
8.	1	EACH	MAINTENANCE OF EXISTING TRAFFIC SIGNAL INSTALLATION
9.	1	EACH	FULL-ACTUATED CONTROLLER AND TYPE IV CABINET
10.	1	EACH	TRANSCIVER - FIBER OPTIC
11.	411	FOOT	ELECTRIC CABLE IN CONDUIT, SIGNAL NO. 14 2C
12.	429	FOOT	ELECTRIC CABLE IN CONDUIT, SIGNAL NO. 14 3C
13.	266	FOOT	ELECTRIC CABLE IN CONDUIT, SIGNAL NO. 14 7C
14.	47	FOOT	ELECTRIC CABLE IN CONDUIT, EQUIPMENT GROUNDING CONDUCTOR, NO. 6 1C
15.	3	EACH	SIGNAL HEAD, LED, 1-FACE, 3-SECTION, MAST-ARM MOUNTED
16.	1	EACH	SIGNAL HEAD, LED, 1-FACE, 3-SECTION, BRACKET MOUNTED
17.	1	EACH	SIGNAL HEAD, LED, 1-FACE, 5-SECTION, BRACKET MOUNTED
18.	1	EACH	SIGNAL HEAD, LED, 1-FACE, 5-SECTION, MAST-ARM MOUNTED
19.	2	EACH	SIGNAL HEAD, LED, 2-FACE, 1-3 SECTION, 1-5 SECTION, BRACKET MOUNTED
20.	2	EACH	PEDESTRIAN SIGNAL HEAD, LED, 1-FACE, BRACKET MOUNTED WITH COUNTDOWN TIMER
21.	4	EACH	TRAFFIC SIGNAL BACKPLATE, LOUVERED, ALUMINUM
22.	5	EACH	INDUCTIVE LOOP DETECTOR
23.	2	EACH	PEDESTRIAN PUSH-BUTTON
24.	1	EACH	RELOCATE EXISTING EMERGENCY VEHICLE PRIORITY SYSTEM, PHASING UNIT
25.	238	FOOT	REMOVE ELECTRIC CABLE FROM CONDUIT
26.	1	EACH	REMOVE EXISTING TRAFFIC SIGNAL EQUIPMENT
27.	1	EACH	REMOVE EXISTING SERVICE INSTALLATION

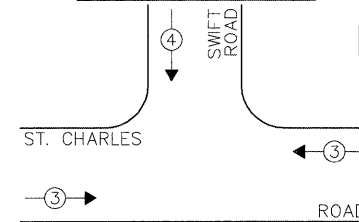


CABLE PLAN

EXISTING AND PROPOSED CONTROLLER SEQUENCE



EXISTING EMERGENCY VEHICLE PREEMPTION SEQUENCE



- LEGEND:**
- ◀ [*] ▶ SINGLE ENTRY PHASE
 - ◀ [+] ▶ DUAL ENTRY PHASE
 - ◀ [P] ▶ PEDESTRIAN PHASE
 - * NUMBER REFERS TO ASSOCIATED PHASE
 - ◀ [OL] ▶ OVERLAP

EXISTING AND PROPOSED PHASE DESIGNATION DIAGRAM

EXISTING EMERGENCY VEHICLE PREEMPTORS	
EMERGENCY VEHICLE PREEMPTOR	3
MOVEMENT	4

THE TRAFFIC SIGNAL CONTROL EQUIPMENT FOR THIS PROJECT SHALL BE "ECONOLITE" TO MATCH THE EXISTING ADJACENT SYSTEM.

I.D.O.T. TRAFFIC SIGNAL INSTALLATION ELECTRICAL SERVICE REQUIREMENTS					TOTAL WATTAGE
TYPE	NO. LAMPS	INCAND.	L.E.D.	% OPERATION	
SIGNAL (RED)	10	135	17	0.50	85.0
SIGNAL (YELLOW)	10	135	25	0.25	62.5
SIGNAL (GREEN)	10	135	15	0.25	37.5
ARROW	8	135	12	0.10	9.6
PED. SIGNAL	2	90	25	1.00	50.0
CONTROLLER	1	-	100	1.00	100.0
LUMINAIRE	2	250	-	0.50	250.0
L.E.D. ST. NAME SIGN	-	-	64	0.50	-
VIDEO SYSTEM	-	-	150	1.00	-
BATTERY BACKUP	-	-	25	1.00	-
ILLUMINATED SIGN	-	-	25	0.05	-
TOTAL =					594.6

ENERGY COSTS - BILLED TO: VILLAGE OF GLEN ELLYN
(ADDRESS) 20 S. LAMBERT ROAD
(ADDRESS) GLEN ELLYN, IL 60137
ENERGY SUPPLY - CONTACT: MS. DEB RANKIN
PHONE: (630) 691-4379
COMPANY: COM-ED

FILE NAME = 4281.800-TR1.dwg	USER NAME = ZACH WALLSTEN	DESIGNED - JRD	REVISED -
PLOT SCALE = 1" = .0833'	CHECKED - KLB	DRAWN - ZCW	REVISED -
PLOT DATE = 12/16/2011	DATE - 12/16/2011		REVISED -

STATE OF ILLINOIS
DEPARTMENT OF TRANSPORTATION

SCHEDULE OF QUANTITIES, CABLE PLAN, PHASE DESIGNATION DIAGRAM, & EMERGENCY VEHICLE PREEMPTION SEQUENCE		
ST. CHARLES ROAD AT SWIFT ROAD		
SCALE: N.A.	SHEET NO. OF SHEETS	STA. TO STA.

FAU. RTE.	SECTION	COUNTY	TOTAL SHEETS	SHEET NO.
1397	09-00206-08-TL	DuPAGE	53	27
CONTRACT #:			63625	
ILLINOIS FED. AID PROJECT				

GHA #4281.800