

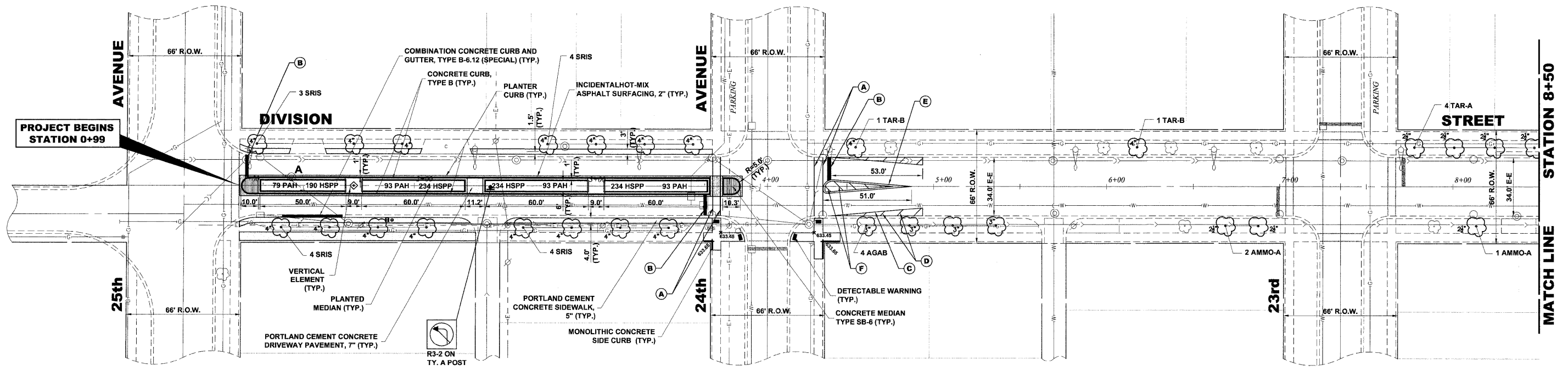
PROJECT BEGINS  
STATION 0+99

STATION 8+50  
MATCH LINE

**PAVEMENT MARKINGS LEGEND**

| ITEM DESCRIPTION   | SYMBOL |
|--|--------|
| THERMOPLASTIC PAVEMENT MARKING - LINE 6", CROSS WALK, WHITE                        | A      |
| THERMOPLASTIC PAVEMENT MARKING - LINE 24", STOP BAR, WHITE                         | B      |
| THERMOPLASTIC PAVEMENT MARKING - LINE 4", EDGE, WHITE                              | C      |
| THERMOPLASTIC PAVEMENT MARKING - LINE 12", DIAGONAL @ 20' C-C OR 5 MINIMUM, WHITE  | D      |
| THERMOPLASTIC PAVEMENT MARKING - LINE 4", DOUBLE @ 11" C-C, YELLOW                 | E      |
| THERMOPLASTIC PAVEMENT MARKING - LINE 12", DIAGONAL @ 20' C-C OR 5 MINIMUM, YELLOW | F      |

EXISTING TOPOGRAPHY



PROJECT BEGINS  
STATION 0+99

STATION 8+50  
MATCH LINE

PROPOSED IMPROVEMENT

Drawing file: W:\Projects\90011046 - Division Street IEP April Letting\_02-01-12\DivisionStreet.dwg Feb 03, 2012 - 2:56pm



♦ Civil Engineers  
 ♦ Municipal Consultants  
 ♦ Established 1911  
 9933 Roosevelt Road  
 Westchester, Illinois 60154-2780  
 Phone: 708/965-0390  
 Fax: 708/965-1312

|                 |           |
|-----------------|-----------|
| DESIGNED - ELS  | REVISED - |
| DRAWN - MK, DMM | REVISED - |
| CHECKED - ELS   | REVISED - |
| DATE - 02-06-12 | REVISED - |

STATE OF ILLINOIS  
DEPARTMENT OF TRANSPORTATION

DIVISION STREET  
(25TH AVENUE & 24TH AVENUE)

SCALE: 1" = 30' SHEET NO. 1 OF 8 SHEETS STA. 0+00 TO STA. 8+50

|                                 |                        |             |                                |              |
|---------------------------------|------------------------|-------------|--------------------------------|--------------|
| F.A.U. RTE. 1026                | SECTION 10-00116-00-SW | COUNTY COOK | TOTAL SHEETS 40                | SHEET NO. 10 |
| CONTRACT NO. 63654              |                        |             | FED. ROAD DIST. NO. 1 ILLINOIS |              |
| FED. AID PROJECT M-TE-0001(825) |                        |             |                                |              |