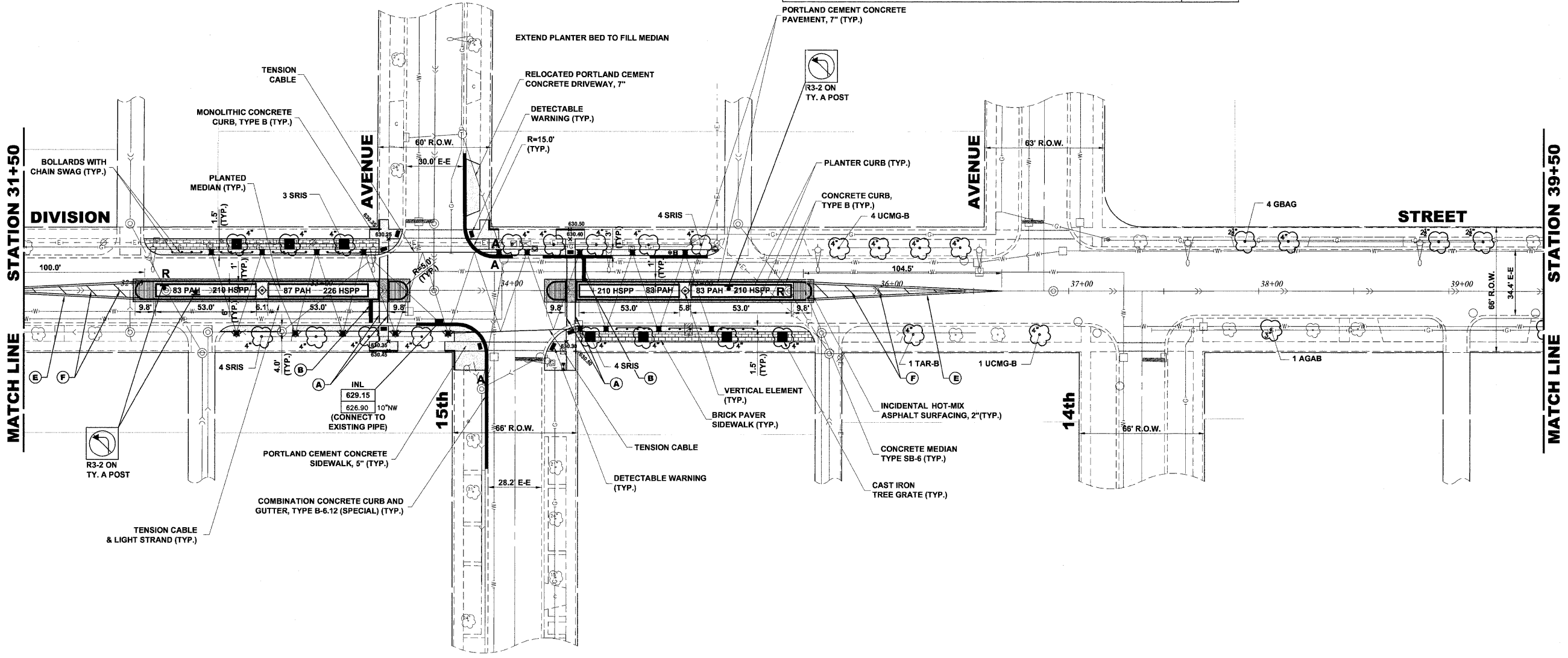


PAVEMENT MARKINGS LEGEND	
ITEM DESCRIPTION	SYMBOL
THERMOPLASTIC PAVEMENT MARKING - LINE 6", CROSS WALK, WHITE	A
THERMOPLASTIC PAVEMENT MARKING - LINE 24", STOP BAR, WHITE	B
THERMOPLASTIC PAVEMENT MARKING - LINE 4", EDGE, WHITE	C
THERMOPLASTIC PAVEMENT MARKING - LINE 12", DIAGONAL @ 20' C-C OR 5 MINIMUM, WHITE	D
THERMOPLASTIC PAVEMENT MARKING - LINE 4", DOUBLE @ 11" C-C, YELLOW	E
THERMOPLASTIC PAVEMENT MARKING - LINE 12", DIAGONAL @ 20' C-C OR 5 MINIMUM, YELLOW	F



PROPOSED IMPROVEMENT

Drawing file: W:\Projects\6001046 - Division Street ITPP\April Letting_02-01-12\DivisionStreet.dwg Feb 03, 2012 - 2:58pm



♦ Civil Engineers
 ♦ Municipal Consultants
 ♦ Established 1911
 9933 Reservoir Road
 Wheeling, Illinois 60154-2780
 Phone: 708/965-0390
 Fax: 708/965-1312

DESIGNED - ELS	REVISED -
DRAWN - MK, DMM	REVISED -
CHECKED - ELS	REVISED -
DATE - 02-06-12	REVISED -

STATE OF ILLINOIS
DEPARTMENT OF TRANSPORTATION

DIVISION STREET
(15TH AVENUE)

SCALE: 1" = 30' SHEET NO. 6 OF 8 SHEETS STA. 31+50 TO STA. 39+50

F.A.U. RTE.	SECTION	COUNTY	TOTAL SHEETS	SHEET NO.
1026	10-00116-00-SW	COOK	40	15
FED. ROAD DIST. NO. 1 ILLINOIS			CONTRACT NO. 63654	
FED. AID PROJECT M-TE-0001(825)			FHE PROJECT NO. 600-44-04600	